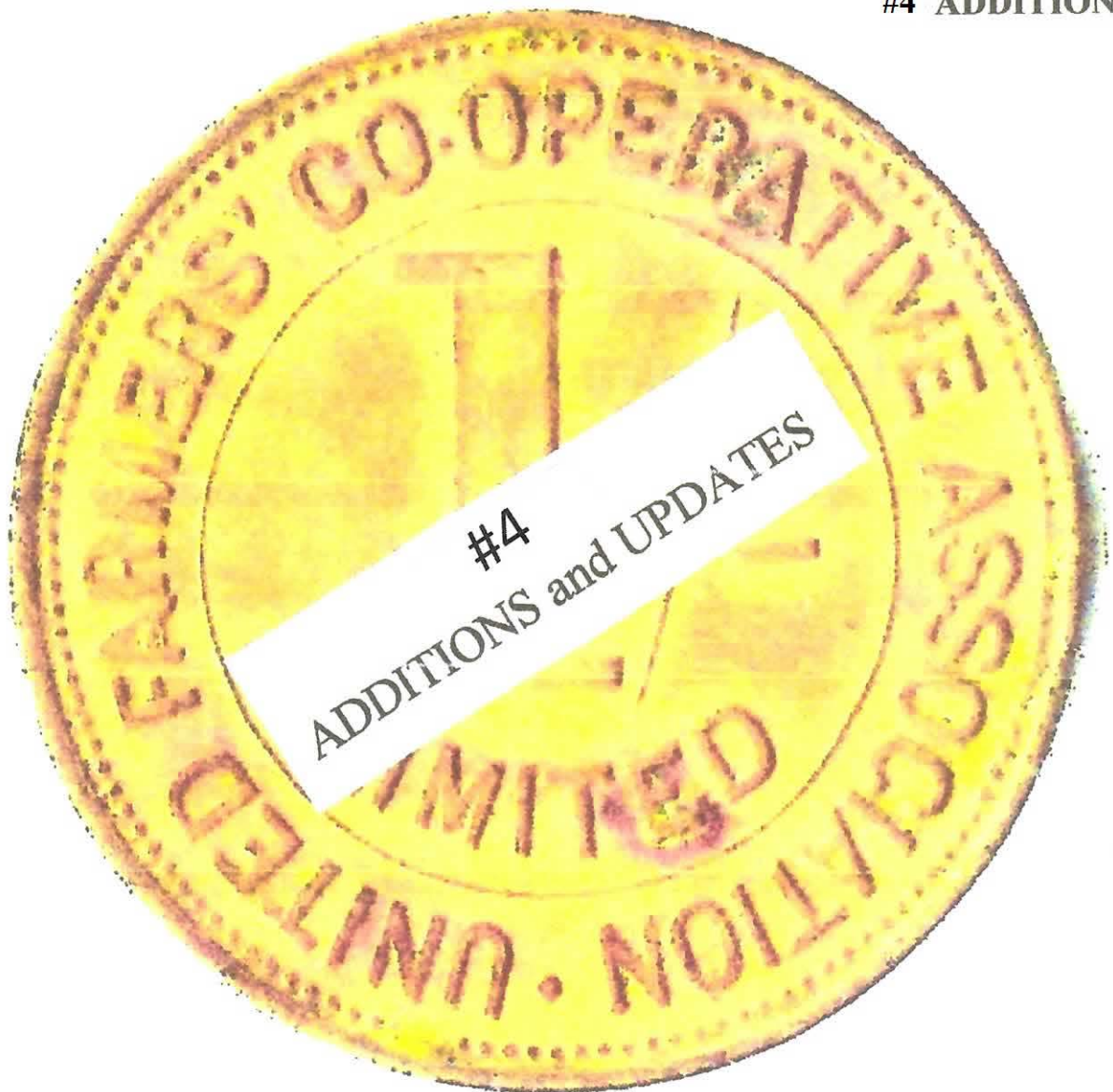


# NEW ZEALAND

## Checks, Discount & Special Purpose Tokens

PART FIVE

#4 ADDITIONS



Terence M. Roker

This manuscript is unpublished.

No permission has been sought from copyright holders for the reproduction of any of the photographs or illustrations which have been used throughout this manuscript.

This copy has been printed by the author for no financial gain whatsoever, with the intention that it is to be used for research purposes only.

The author wishes to disclaim any responsibility for any person who subsequently makes copies of this manuscript and uses them in such a way that violates copyright law.

# NEW ZEALAND

CHECKS, DISCOUNTS, & SPECIAL PURPOSE TOKENS.



## CATALOGUE & INFORMATION

First issued in New Zealand, Circa 1880

Many varieties exist.

Survived until 1930,s

After the 1960's these Tokens  
are classed as modern.



**Terence M. Roker**  
UK, NZ, U.S.A.



1340

## Check -Benson & Hedges. World Championship New Zealand - Token Circa 1985

Reg. No: TMR - B23

**Summary:**

New Zealand

Value: No value (AD)

Mint: Not recorded.

**Discipline:** Numismatics

**More information**

**Tagged with:** Tokens / Medallion

**Themes this item is part of:** Numismatics & Philately Collection

**Primary Classification:** Tokens

**Secondary Classification:** New Zealand

**Tertiary Classification:** Checks

**Denomination:** No value

**Inscriptions:** (Edge) Plain  
(Obverse) World Championship Of Cricket / Symbol / Benson / & Hedges / 1985  
(Reverse) England\*Sri Lanka\*W.Indies\*Pakistan\*New Zealand  
\*India\*Australia

**Shape:** Round

**Size:** 50 mm aprox.

**Material:** Metal, Gilt Finish

**Weight:** W?? grams

**Issued By:** Australian Cricket Board





# World Championship of Cricket

---

The **Benson & Hedges World Championship of Cricket** was part of the celebrations commemorating the 150th anniversary of European settlement in the Australian state of Victoria. It was a One Day International (ODI) tournament held in Australia from 17 February to 10 March 1985. India defeated Pakistan in the final by 8 wickets.

All of the then seven Test match playing teams participated with matches played at the Melbourne Cricket Ground and the Sydney Cricket Ground. The tournament saw the first matches played under lights at the Melbourne Cricket Ground. India were the reigning World Cup holders, having defeated West Indies in the 1983 Cricket World Cup Final, but the bookmakers installed West Indies as favourites. India were ultimately undefeated at the tournament, with Ravi Shastri named as the player of the tournament.

## Tournament format

---

Each team was required to name a 14-player squad for the tournament. Matches were played with coloured clothing, white balls, fielding restrictions and innings limited to 50 overs.

The seven teams were split into two qualifying groups. Each played a round-robin with two points awarded for a win and one point for a draw or tie. Teams on equal points were separated by run rate.

### New Zealand

Geoff Howarth (captain), John Bracewell, Lance Cairns, Ewen Chatfield, Jeremy Coney, Jeff Crowe, Martin Crowe, Richard Hadlee, Paul McEwan, John Reid, Ian Smith, Martin Snedden, John Wright.

### 1985 World Championship of Cricket

<b>Dates</b>	17 February – 10 March 1985
<b>Administrator(s)</b>	Australian Cricket Board
<b>Cricket format</b>	One Day International
<b>Tournament format(s)</b>	Group stage and Knockout
<b>Host(s)</b>	 Australia
<b>Champions</b>	 India (1st title)
<b>Runners-up</b>	 Pakistan
<b>Participants</b>	7
<b>Matches</b>	13
<b>Player of the series</b>	 Ravi Shastri
<b>Most runs</b>	 Krishnamachari Srikkanth (238)
<b>Most wickets</b>	 Laxman Sivaramakrishnan (10)

1342

## Check - Auckland Exhibition

### New Zealand - Token Circa 1913 -14

Reg. No: TMR - A63

Name could be engraved on reverse between the ferns at exhibition.

#### Summary:

New Zealand

Value: No value (AD)

Mint: Struck at the Exhibition Mint

**Discipline:** Numismatics

---

#### More information

<b>Tagged with:</b>	Tokens / Medallions
<b>Themes this item is part of:</b>	Numismatics & Philately Collection
<b>Primary Classification:</b>	Tokens
<b>Secondary Classification:</b>	New Zealand
<b>Tertiary Classification:</b>	Checks
<b>Denomination:</b>	No value
<b>Inscriptions:</b>	(Edge) Plain (Obverse) Industrial Exhibition / (Building) / 1913 -14 (Reverse) Two Silver Ferns / A. Kohn
<b>Shape:</b>	Round
<b>Size:</b>	19.00 mm approx.
<b>Material:</b>	Silver (pierced)
<b>Weight:</b>	4.5 grams
<b>Issued By:</b>	Auckland Exhibition Federation



## The Auckland Exhibition, 1913-1914



All Rights Reserved. (c) Auckland Libraries 2020

1913; 1914

Domain Entrance to 1913-14 Exhibition at Auckland NZ Mr and Mrs Ed Wood with best wishes S G Frith

People queuing at the entrance to the Auckland Industrial, Agricultural and Mining Exhibition in the Auckland Domain, with the twin towers of the Palace of Industries in the background

Auckland Exhibition 1913-1914; Prams; Bicycles; Horses; Horse-drawn vehicles

## Opening

The Auckland Industrial, Agricultural and Mining Exhibition was opened on 1 December 1913 by its chairman, George Elliott, with the Prime Minister ([William Massey](#)) and mayor of Auckland ([Peter Dignan](#)) also in attendance. A message of welcome was read from King [George V](#). There were 18,000 attendees on the opening day, and the fair ran until 18 April 1914.



1344

## Check - F. Braun & Co. Ltd. Auckland New Zealand - Token Circa

Reg. No: TMR - F13

Hard to read token.

### Summary:

New Zealand

Value: No value (AD)

Mint: Not recorded.

**Discipline:** Numismatics

---

### More information

**Tagged with:** Tokens

**Themes this item is part of:** Numismatics & Philately  
Collection

**Primary Classification:** Tokens

**Secondary Classification:** New Zealand

**Tertiary Classification:** Checks

**Denomination:** No Value

**Inscriptions:** (Edge) Plain  
(Obverse) F. Braun and ????????/ Value To / Franchise / Holders /  
Only / Auckland N Z  
(Reverse) One Krown / (Crown Picture) / 198?

**Shape:** Round

**Size:** 32 mm

**Material:** Brass

**Weight:** 12.50 grams

**Issued By:** F.Braun & Co Ltd.  
391 Rosebank Rd. Auckland



# open corporates

## SONATA LABORATORIES NZ LIMITED

**Company Number**  
 103555  
**Status**  
 Removed  
**Incorporation Date**  
 27 July 1978 (over 44 years ago)  
**Dissolution Date**  
 31 March 1997  
**Company Type**  
 NZ Limited Company  
**Jurisdiction**  
[New Zealand](#)  
**Business Number**  
 9429040409306  
**Registered Address**  
 15 Sultan Street, Ellerslie, Auckland, 1005 New Zealand  
**Previous Names**  
**F. Braun & Company Limited**  
**391 Rosebank Road,**  
**Auckland. N.Z.**



Braun and Company Ltd. Turnkey Projects & Healthcare.

### Inactive Directors / Officers Sonata Laboratories NZ Limited

- [Andre Leandre BOYER](#), director, 14 Jan 1992-
- [Chee Yeam KUEK](#), director, 20 Dec 1993-30 Mar 1995
- [James Henry AVIS](#), director, 3 Feb 1992- 3 Apr 1996
- [John Arthur GAUL](#), director, 22 Dec 1992-20 Dec 1993
- [Karl Sigfred HANSEN](#), director, 30 Sep 1991-15 Mar 1992
- [Robert MORRISON](#), director, 27 Feb 1997-
- [Swee Keong LIOW](#), director, 30 Mar 1995-

### Recent filings for SONATA LABORATORIES NZ LIMITED

18 Aug 2009  
[Documents registered pre 1 Jan 2000 view](#)

27 Mar 1997  
[Capital, Increase of view](#)

5 Mar 1997  
[Particulars of Director & Secretary view](#)

20 May 1996  
[Annual Return view](#)

4 Apr 1996  
[Particulars of Director & Secretary view](#)



1346

## Check - The New Zealand Surf Life Saving Association New Zealand - Token      Circa 2000 ?

Reg. No: TMR - T53

---

### Summary:

New Zealand

Value:-No value (AD)

Mint: T.M. Dick & Co .Ltd. Petone

**Discipline:** Numismatics

---

### More information

**Tagged with:** Tokens/Medals/Souvenirs

**Themes this item is part of:** Numismatics & Philately Collection

**Primary Classification:** Tokens

**Secondary Classification:** New Zealand

**Tertiary Classification:** Checks

**Denomination:** No value

**Inscriptions:** (Edge) Plain  
(Obverse) The New Zealand Surf Life Saving Association / Swimmer holding flag.  
(Reverse) International Surf life Saving Competition / Around symbol

**Shape:** Round

**Size:** 44.00 mm  
Thick 3 mm

**Material:** Bronze -- Gilded Brass

**Weight:** 34.6 grams

**Issued By:** Surf Life Saving N.Z. Inc. Wellington





## Check - The New Zealand Surf Life Saving Association New Zealand - Token Circa 2000 ?

Reg. No: TMR - T53+1

### Summary:

New Zealand

Value:-No value (AD)

Mint: T.M. Dick & Co .Ltd. Petone

**Discipline:** Numismatics

### More information

**Tagged with:** Tokens/Medals/Souvenirs

**Themes this item is part of:** Numismatics & Philately Collection

**Primary Classification:** Tokens

**Secondary Classification:** New Zealand

**Tertiary Classification:** Checks

**Denomination:** No value

**Inscriptions:** (Edge) Plain  
(Obverse) The New Zealand Surf Life Saving Association / Swimmer holding flag.

(Reverse) Inter - District / S . L . S / Championship

**Shape:** Round

**Size:** 44.00 mm  
Thick 3 mm

**Material:** Bronze

**Weight:** grams

**Issued By:** Surf Life Saving N.Z. Inc. Wellington



1348

## Check - The New Zealand Surf Life Saving Association New Zealand - Token Circa 2000 ?

Reg. No: TMR - T53+2

---

### Summary:

New Zealand

Value:-No value (AD)

Mint: T.M. Dick & Co .Ltd. Petone

**Discipline:** Numismatics

---

### More information

**Tagged with:** Tokens/Medals/Souvenirs

**Themes this item is part of:** Numismatics & Philately Collection

**Primary Classification:** Tokens

**Secondary Classification:** New Zealand

**Tertiary Classification:** Checks

**Denomination:** No value

**Inscriptions:** (Edge) Plain  
(Obverse) The New Zealand Surf Life Saving Association / Swimmer holding flag.  
(Reverse) Inter - District / S . L . S / Championship

**Shape:** Round

**Size:** 44.00 mm  
Thick 3 mm

**Material:** Silver

**Weight:** grams

**Issued By:** Surf Life Saving N.Z. Inc. Wellington



## Check - The New Zealand Surf Life Saving Association New Zealand - Token Circa 2000 ?

Reg. No: TMR - T53+3

---

### Summary:

New Zealand

Value:-No value (AD)

Mint: T.M. Dick & Co .Ltd. Petone

**Discipline:** Numismatics

---

### More information

**Tagged with:** Tokens/Medals/Souvenirs

**Themes this item is part of:** Numismatics & Philately Collection

**Primary Classification:** Tokens

**Secondary Classification:** New Zealand

**Tertiary Classification:** Checks

**Denomination:** No value

**Inscriptions:** (Edge) Plain  
(Obverse) The New Zealand Surf Life Saving Association / Swimmer holding flag.  
(Reverse) Inter - District / S . L . S / Championship

**Shape:** Round

**Size:** 44.00 mm  
Thick 3 mm

**Material:** Gold

**Weight:** grams

**Issued By:** Surf Life Saving N.Z. Inc. Wellington





1350

## Check - The New Zealand Surf Life Saving Association New Zealand - Token      Circa 2000 ?

Reg. No: TMR - T53 + 4

---

### Summary:

New Zealand

Value:-No value (AD)

Mint: T.M. Dick & Co .Ltd. Petone

**Discipline:** Numismatics

---

### More information

**Tagged with:** Tokens/Medals/Souvenirs

**Themes this item is part of:** Numismatics & Philately  
Collection

**Primary Classification:** Tokens

**Secondary Classification:** New Zealand

**Tertiary Classification:** Checks

**Denomination:** No value

**Inscriptions:** (Edge) Plain  
(Obverse) The New Zealand Surf Life Saving Association / Swimmer holding flag.  
(Reverse) New Zealand Championship / Non-Championship Event

**Shape:** Round

**Size:** 44.00 mm  
Thick 3 mm

**Material:** Bronze

**Weight:** grams

**Issued By:** Surf Life Saving N.Z. Inc. Wellington



## Check - The New Zealand Surf Life Saving Association New Zealand - Token Circa 2000 ?

Reg. No: TMR - T53+5

---

### Summary:

New Zealand

Value:-No value (AD)

Mint: T.M. Dick & Co .Ltd. Petone

**Discipline:** Numismatics

---

### More information

**Tagged with:** Tokens/Medals/Souvenirs

**Themes this item is part of:** Numismatics & Philately Collection

**Primary Classification:** Tokens

**Secondary Classification:** New Zealand

**Tertiary Classification:** Checks

**Denomination:** No value

**Inscriptions:** (Edge) Plain  
(Obverse) The New Zealand Surf Life Saving Association / Swimmer holding flag.  
(Reverse) New Zealand Championship / Non-Championship Event

**Shape:** Round

**Size:** 44.00 mm  
Thick 3 mm

**Material:** Silver

**Weight:** grams

**Issued By:** Surf Life Saving N.Z. Inc. Wellington





1352

## Check - The New Zealand Surf Life Saving Association New Zealand - Token Circa 2000 ?

Reg. No: TMR - T53 + 6

---

### Summary:

New Zealand

Value:-No value (AD)

Mint: T.M. Dick & Co .Ltd. Petone

**Discipline:** Numismatics

---

### More information

**Tagged with:** Tokens/Medals/Souvenirs

**Themes this item is part of:** Numismatics & Philately  
Collection

**Primary Classification:** Tokens

**Secondary Classification:** New Zealand

**Tertiary Classification:** Checks

**Denomination:** No value

**Inscriptions:** (Edge) Plain  
(Obverse) The New Zealand Surf Life Saving Association / Swimmer holding flag.  
(Reverse) New Zealand Championship / Non-Championship Event

**Shape:** Round

**Size:** 44.00 mm  
Thick 3 mm

**Material:** Gold

**Weight:** grams

**Issued By:** Surf Life Saving N.Z. Inc. Wellington





# Surf Life Saving New Zealand

---

**Surf Life Saving New Zealand (SLSNZ)** is the national association representing 74 Surf Life Saving Clubs in New Zealand. The organisation's motto is 'In it for Life'. This refers to both the long relationship many members have with the organisation, as well as to the organisation's purpose of preventing drowning and injury, thereby saving lives.

Specific New Zealand beaches are patrolled by qualified Surf Lifeguards from mid October until April each year. Red and Yellow flags indicate that a beach is patrolled by Surf Lifeguards. The area of water in between these flags is designated as the safest place to swim on the beach, as well as showing where Surf Lifeguards are patrolling. It is widely publicised that beachgoers should "Swim Between the Flags" in order to be safe while swimming in the ocean.

Surf lifeguards are identifiable by their yellow shirts and red shorts. Surf Life Saving New Zealand is sponsored chiefly by BP, TSB, DHL and Lotto.

## History

---

In the early years of the 20th century, the New Zealand Amateur Swimming Association (NZASA) controlled the limited amount of life saving activity by explaining resuscitation methods and providing demonstrations at swimming club carnivals. The next step occurred in 1912 when the Royal Life Saving Society (RLSS) was formed during a conference, called by Canterbury, of all the head centres. The RLSS was established in Christchurch and remains there to this day.

The first surf clubs began in the years 1909 to 1910 leading off with: Castlecliff (Wanganui), Lyall Bay (Wellington), New Brighton (Christchurch) and Worser Bay Wellington. Over the next few years other clubs formed, around five regions: Wellington, Christchurch, Dunedin, Gisborne/Napier/New Plymouth and Wanganui.

In the Northern Region, Piha Surf Life Saving Club was founded in 1934, and as such is the oldest club on Auckland's West Coast and is the home of Piha Rescue.

Soon after the clubs were formed, rivalries developed and this led to the formation of competitions between the clubs and regions. By early 1912 competitions were being organised by Wellington's Maranui Club, with male members competing in squads of 8. The competitions consisted of a land drill and 'reel test'. The first national champs where clubs were able to compete was held in 1922.

Surf Life Saving in New Zealand continues to grow in size and there are now 74 affiliated surf clubs.

## Surf Life Saving New Zealand Inc.



**SURF LIFE SAVING**

SLSNZ Logo

<b>Abbreviation</b>	SLSNZ
<b>Formation</b>	1 March 1910
<b>Type</b>	NGO
<b>Legal status</b>	Incorporated Society, Charity
<b>Purpose</b>	To protect our community in the water.
<b>Headquarters</b>	Wellington
<b>Region served</b>	New Zealand
<b>Membership</b>	18 831
<b>President</b>	Marilyn Moffatt ( <a href="http://www.surflifesaving.org.nz/organisation/about-us/our-people/">http://www.surflifesaving.org.nz/organisation/about-us/our-people/</a> )
<b>Main organ</b>	Board of Directors ( <a href="https://www.surflifesaving.org.nz/organisation/about-us/our-people/">https://www.surflifesaving.org.nz/organisation/about-us/our-people/</a> )
<b>Staff</b>	46
<b>Website</b>	SLSNZ Website ( <a href="http://www.surflifesaving.org.nz">http://www.surflifesaving.org.nz</a> )

- \* **T 53 Is a token that anyone could purchase.**
- \* **T 53+1 to T53+6 are really Medals, but these are not awarded to anyone. So now could be classed as Tokens.????**

1354

**Check -Nelson Band Of Hope.      New Zealand**  
**New Zealand - Token              Circa Unknown**

Reg. No: TMR - N112

---

**Summary:**

New Zealand  
Value: No value(AD)  
Mint: Not recorded.

**Discipline:** Numismatics

---

More information

**Tagged with:** Tokens

**Themes this item is part of:** Numismatics & Philately Collection

**Primary Classification:** Tokens

**Secondary Classification:** New Zealand

**Tertiary Classification:** Checks

**Denomination:** No value

**Inscriptions:** (Edge) Plain  
(Obverse) Nelson Band Of Hope / Prevention / Is Better Than / Cure / New Zealand  
(Reverse) Be Thou Faithful Unto Death / Lead Us Not Into Temptation / (Picture) / Wine Is A Mocker

**Shape:** Round

**Size:** 38.00

**Material:** White Metal

**Weight:** grams

**Issued By:** Nelson Band Of Hope.



# Ben Crisp and the Band of Hope

1355

Ben Crisp was a reformed drunkard who took an abstinence pledge in 1843, inspired by the sermons of teetotaler and Temperance Society leader Alfred Saunders.

He was born in London, England, probably on 11 May 1808, and left England in 1819 for Australia, where he worked as a whaler, farm worker, and bullock driver. In 1837 he moved to New Zealand, joining a whaling party on the Kapiti coast and then working as a boatman at Port Nicholson (Wellington).

**In Nelson,** Crisp worked with Sam Phelps, using a bullock dray to transport the luggage of immigrants from the Nelson port to the city, and the business was very profitable. After taking the pledge Crisp no longer drank the profits, but settled down and married Elizabeth Burnett in 1846. His resulting five sons and five daughters were presented as healthy specimens of teetotalism.

Crisp was supported by teacher Matthew Campbell to form "The Band of Hope" which for 60 years persuaded children to accept the dangers of the "demon drink" and remain abstainers for their adult lives.

The band was always at the forefront of public occasions with upwards of 500 children turning out to welcome important visitors. He held a popular annual Queens Birthday entertainment and in 1887 received recognition for his "services in promoting the welfare and happiness of the children of Nelson."

When he died in 1901 his funeral cortege was one of the largest seen in the city.



1356

**Check - Air New Zealand,  
New Zealand - Token Circa Unknown**

Reg. No: TMR - A 06+1 (See other Air N.Z. ) This one has other lines across.

---

**Summary:**

New Zealand

Value: No denomination (AD)

Mint: Not recorded.

**Discipline:** Numismatics

---

**More information**

**Tagged with:** Tokens

**Themes this item is part of:** Numismatics & Philately Collection

**Primary Classification:** Tokens

**Secondary Classification:** New Zealand

**Tertiary Classification:** Checks

**Denomination:** No value

**Inscriptions:** (Edge) Plain  
(Obverse) Automatic Beverage Machine (NZ) / 6 Circles / Token  
(Reverse) (NZ) Logo

**Shape:** Round

**Size:** 23.70 mm - 23.67 mm

**Material:** C&N

**Weight:** 5.8 grams

**Issued By:** Air New Zealand  
Auckland



## Check - Raleigh Bicycles, New Zealand - Token      Circa 1960's ?(Not to sure in N.Z.)

Reg. No: TMR - R47

**Summary:**  
New Zealand  
No denomination (AD)  
Mint: not recorded.

**Discipline:** Numismatics

### More information

**Tagged with:** Token

**Themes this item is part of:** Numismatics & Philately  
Collection

**Primary Classification:** Tokens

**Secondary Classification:** New Zealand

**Tertiary Classification:** Checks

**Denomination:** No value

**Inscriptions:** (Edge) Plain  
(Obverse) Ride / The / All Steel / Raleigh  
(Reverse) (Picture bike)

**Shape:** Round

**Size:** 23.00 mm

**Material:** C&N

**Weight:**

**Issued By:** Raleigh Co.  
Morrison Industries, Hastings



1358

**Check - Raleigh Bicycles,  
New Zealand - Token      Circa 1960's ? (Not to sure in N.Z.)**

Reg. No: TMR - R47+1

---

**Summary:**

New Zealand  
No denomination (AD)  
Mint: not recorded.

**Discipline:** Numismatics

---

More information

**Tagged with:** Token

**Themes this item is part of:** Numismatics & Philately  
Collection

**Primary Classification:** Tokens

**Secondary Classification:** New Zealand

**Tertiary Classification:** Checks

**Denomination:** No value

**Inscriptions:** (Edge) Plain  
(Obverse) Ride / The / All Steel / Raleigh (Radiating Lines Between E&EE)  
(Reverse) (Picture bike)

**Shape:** Round

**Size:** 23.00 mm

**Material:** Steel

**Weight:** 6.2 grams

**Issued By:** Raleigh Co.  
Morrison Industries, Hastings





## New Zealand bikes of the 1980s

Posted on 01/07/2012 17/03/2021 by Tony Hadland

### Michael Toohey describes a unique and insular market that even spawned a separable Raleigh 20

Raleigh bicycles were manufactured under licence in New Zealand by Morrison Industries of Hastings from the very late sixties through to (I think) 1987. Although the Sports Model was the original backbone of the range, it was the Raleigh 20 which really set the sales records.

Slightly cruder than the original Nottingham version, the 20 was nevertheless a sturdy machine which suffered very few problems over its long production life. It was made of local steel, and the main tube was of slightly smaller diameter than the original. In another departure, the bracing tubes from the main tube to the bottom bracket were missing. This last feature allowed the production of a fully detachable version which was, I think, unique to NZ.

I own a Raleigh 20 Detachable, although I've modified the machine heavily. The bike originally came fitted with the usual Raleigh equipment: Quick adjust seat and 'bars, full 'guards, a built in prop-stand and a sturdy tubular carrier. Also fitted was a wiring system for dynamo lights, which ran through the main tube and through copper contact plates at the shotgun style joint.

Unlike the US 20s, the NZ version stayed true to the 20 x 1 3/8" wheel. I modified mine to 20 x 1.75" BMX rims, but found that they lowered the BB too much. Since the photos were taken I've switched back to bigger diameter aluminium rims and Primo Comet 20 x 1 3/8" tyres. The bike has been transformed, and is now very nippy, thanks to the full pound each wheel has shed! I've also foregone the cable-free back end and replaced the Duomatic with a standard Torpedo 3; much more pleasant to use in my humble opinion. Cable splitting is yet to be tackled.

Keith Guthrie of Cycle Trading Co found the following letter in his files. Note that this letter refers the Folder and not the Detachable, it is closer in format to the original Raleigh 20 Folder from Nottingham, but still without the BB reinforcing bars. Also interesting is the fact that Morrison could confidently claim in 1977 that the 20 was NZ's biggest selling bicycle.



1360

## Check - Through God We Have Gained The Victory New Zealand - Token      Circa July 1919

Reg. No: TMR - T54

---

**Summary:**

New Zealand

Value:-No Value (AD)

Mint: Moller, Dunedin

**Discipline:** Numismatics

---

More information

**Tagged with:** Token / Medal

**Themes this item is part of:** Numismatics & Philately Collection

**Primary Classification:** Tokens

**Secondary Classification:** New Zealand

**Tertiary Classification:** Checks

**Denomination:** No value

**Inscriptions:** (Edge) Plain Loop  
(Obverse) Through God We Have Gained The Victory / 1914  
(Soldier) 1918  
(Reverse) Plain (Maker's Name)

**Shape:** Round

**Size:** 21.00 mm

**Material:** Brass (alloy)

**Weight:** 4.8 grams

**Issued By:** R.S.A. Dunedin & Timaru R.S.A.





# medal, commemorative (Secondary Term)

1361

## OBJECT / ARTEFACT › HISTORY

OTHER TITLES	Returned Soldiers' Association Peace badge : Through God We Have Gained the Victory [WW1] (descriptive name)
DESCRIPTION	1919 Peace commemorative medal : Through God We Have Gained the Victory [WW1] small medalet of brass and enamel; fixed suspension loop; uniface obverse: inscription on blue enamel band: THROUGH GOD WE HAVE GAINED THE VICTORY around centre field; at centre a New Zealand soldier in full kit scrolls either side bearing dates: 1914 / 1918 reverse: plain with maker's name in two lines: MOLLER / DN
PLACE	<a href="#">New Zealand</a>
ACCESSION DATE	1 September 1985
CREDIT	Collection of Auckland Museum Tamaki Paenga Hira, N2689
NOTES	Returned Soldiers' Association Peace badge, 1919: Through God We Have Gained the Victory  These badges were being sold by the Dunedin and Timaru Returned Soldiers' Association in the weeks leading up to the official peace celebrations in July 1919. It was described as the 'official peace badge' of the RSA, although its sale was possibly limited to these two districts. Proceeds from the sale of the badge were going towards the Dunedin Soldiers' Club, and the Timaru War Memorial.
EVENT	1914-1918 WW1
PERSON	<a href="#">Royal New Zealand Returned and Services' Association Inc</a>
PLACE	<a href="#">New Zealand</a>
DATE	1919 1 January 1919 to 31 December 1919
SUBJECT CATEGORY	<a href="#">peace/wars</a> <a href="#">victory/wars</a>
PRODUCTION	<a href="#">G. Moller (struck by)</a> <a href="#">Dunedin, Otago, New Zealand</a> 1919 <a href="#">World War 1, 1914-18, wars</a> <a href="#">George V (1910 - 1936), House of Windsor, English reign</a>
CONSISTS OF	0 - Whole › <a href="#">brass (alloy)</a> brass › <a href="#">enamel</a>
DIMENSIONS	0 - Whole diameter : 21mm (21mm)





1362

## Check - SCOLLAR & CHISHOLM House Furnishers New Zealand - Token Circa 1890's

Reg. No: TMR - S4+1

Also see pages 712 to 714

### Summary:

New Zealand

Penny (AD)

Mint: Not known

**Discipline:** Numismatics

### More information

**Tagged with:** Furniture Tags/ Tokens

**Themes this item is part of:** Numismatics & Philately Collection

**Primary Classification:** Tokens

**Secondary Classification:** New Zealand

**Tertiary Classification:** Checks

**Denomination:** No value

**Inscriptions:** (Edge) Plain  
(Obverse) Scoullar & Chisholm / (symbol) / House  
Furnishers / (symbol) / Dunedin. & Wellington  
(Reverse) Blank

**Shape:** Oval (uniface)

**Size:** 53.35 mm - 21.17 mm

**Material:** Brass

**Weight:** 1.5 grams

**Issued By:** Scoullar and Chisholm  
Dunedin. & Wellington



## Check - The Co-op Dairy Coy. Of Otago Ltd. Dunedin New Zealand - Token Circa 1967

Reg. No: TMR - T55

Also see pages 769 &amp; 770

**Summary:**

New Zealand

Value:-No value (AD)

Mint: not recorded.

**Discipline:** Numismatics**More information**

**Tagged with:** Token

**Themes this item is part of:** Numismatics & Philately Collection

**Primary Classification:** Tokens**Secondary Classification:** New Zealand**Tertiary Classification:** Checks**Denomination:** No value

**Inscriptions:** (Edge) Plain  
(Obverse) The Co-op.Dairy Coy. / Of Otago / Ltd. / Dunedin  
(Reverse) H. J. Grimwood / O A M / D 34

**Shape:** Round**Size:** 57.56 mm - 57.64 mm**Material:** Brass**Weight:** 20.1 grams

**Issued By:** The Co-op Dairy Coy.Ltd.  
Dunedin  
**Milk Can Token ?**









## Hawera Industrial Exhibition.

HAWERA & NORMANBY STAR, VOLUME XLVI, ISSUE 7909, 13 FEBRUARY 1904, PAGE 2

# Hawera Industrial Exhibition.

Included in the Hawera Gas Company's exhibit is a fine collection of burners, showing the improvements from the first flat flame burner (giving duty equal to two candle power per foot of gas consumed) to the latest Kern incandescent burner giving 25 candle power per foot hourly.

One of the exhibitors, who has visited all the shows of the world during the past 25 years, says that the Hawera Exhibition is by far the best provincial one that he has seen.

There are now over 1500 names in the visitors' book at the Exhibition, some of them duplicated, of course. Opposite each name is a space left for remarks. No doubt the space is small. There is hardly room for more than three words, and few people have the faculty for expressing an idea in a sentence of that length. The consequence is that the "remarks" have a monotonous sameness. "Excellent," "Very creditable," "Exceedingly good," with their variations occur frequently. One critic generously allows that it "will bear inspection," while the faint praise bestowed upon it by others is "Very fair," "Passable," etc. One of the few humorous criticisms is the grave affirmation that it is "not up to St. Louis." Slang terms are used frequently, and according to the writers' peculiar phrases the Exhibition is "Pearly," "Not so dusty," "Dead sweet," "All serene," "Sweet as a nut," etc.

There was only a poor attendance yesterday, and the takings were small. That result is accounted for in the fact that the weather was so unsettled that country folk would not care to face the elements, while townspeople were no doubt "holding off" until to-day, when a final visit may be paid.

The amount that had been received up to last night was estimated at £1600, but the sum had not been ascertained with any accuracy. The expenses will probably be about £1400.

The special train from New Plymouth this morning brought down a large number of people, including the school children of that town.

## HAWERA INDUSTRIAL EXHIBITION.

PRESS, VOLUME LXI, ISSUE 11801, 27 JANUARY 1904, PAGE 7

### HAWERA INDUSTRIAL EXHIBITION.

(PRESS ASSOCIATION TELEGRAM.)

HAWERA, January 26.

The Industrial Exhibition building was finished to-day. The space occupied is 30,000 feet. The committee are spending £1200. Receipts up to the present for space, etc., total £500. One thousand pictures have been promised, the most valuable one being worth £800. One hundred and twenty firms will exhibit, and indications point to the exhibition proving a big success.

## CABLE NEWS.



1904 Mt. Egmont, Hawera Exhibition.  
Souvenir. New Zealand.



1366

## Check - Marion DuFresne. Bay Of Islands New Zealand - Token Circa 1972

Reg. No: TMR - M44

### Summary:

New Zealand

Value: No value (AD)

Mint: not recorded.

**Discipline:** Numismatics

### More information

**Tagged with:** Token / Medallion

**Themes this item is part of:** Numismatics & Philately Collection

**Primary Classification:** Tokens

**Secondary Classification:** New Zealand

**Tertiary Classification:** Checks

**Denomination:** No value

**Inscriptions:** (Edge) Plain  
(Obverse) Marion DuFresne / (Slaying picture) / Bay Of Islands 1772  
(Reverse) Numismatic Society Of Auckland Inc. / (Picture Ship) / 1972

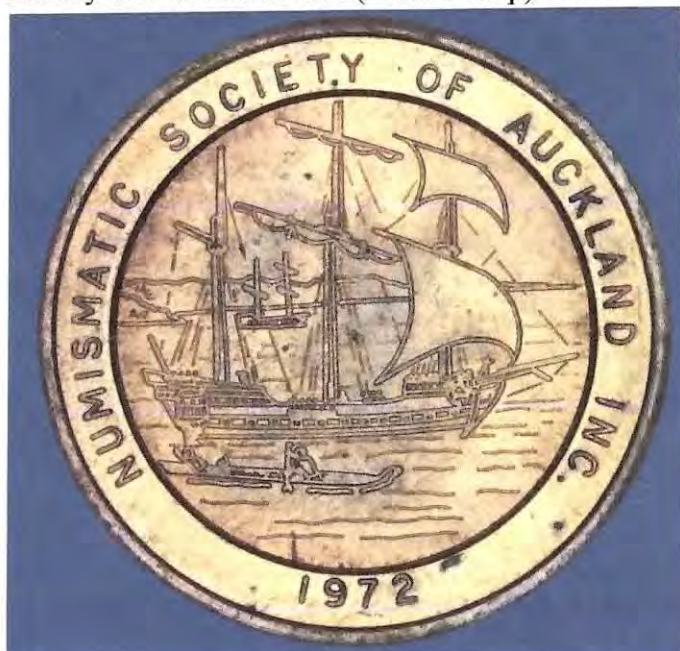
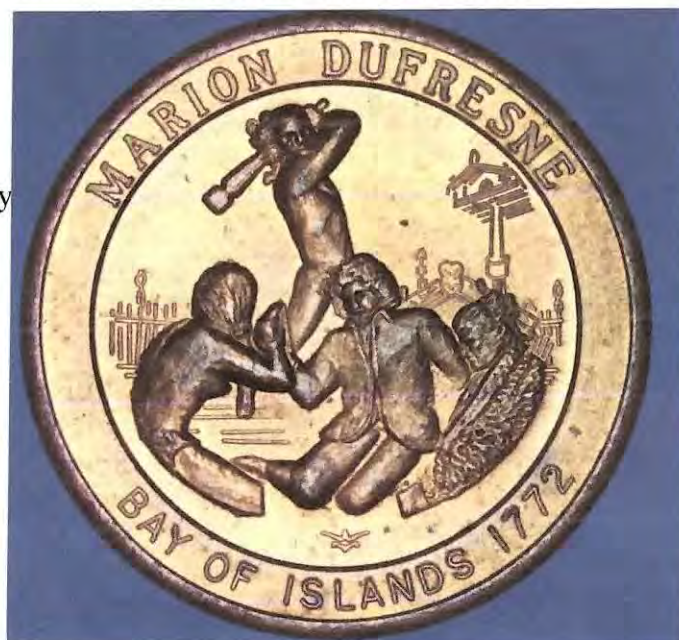
**Shape:** Round

**Size:** 42.00 mm

**Material:** Copper

**Weight:** grams

**Issued By:** Numismatic Society  
Auckland Inc.



In 1735, and not yet a teenager, Marc Joseph Marion du Fresne joined the French India Company ship *Duc de Bourgogne* as honorary sub-lieutenant.

He worked his way up the ranks of the Company and the French royal navy until 1771 when he was given command of two ships for a voyage of trade and exploration to the Pacific sponsored by the French authorities.

En route to his destination Marion du Fresne searched for the fabled southern continent in the south Indian Ocean. Eventually landfall was made in Tasmania, and after several days there he set sail for New Zealand. Marion du Fresne sighted Mount Taranaki on 25 March 1772, naming it *Pic Mascarin*. He then sailed north to Spirits Bay, where a gale caused severe damage to the ships. Marion du Fresne then proceeded south-east and on 4 May reached the Bay of Islands.

The next five weeks were spent exploring the Bay and repairing the ships. On 8 June Marion du Fresne was welcomed at a special ceremony, but within a week he and 24 of his crew were killed by members of the Ngare Raumatl tribe. As the French ships could not leave promptly while repairs were incomplete, a counter-attack was organised, which soon turned into violent reprisals and caused an estimated 250 Māori casualties.

The reasons for the killing of Marion du Fresne and his men may never be known. It is likely that the French transgressed in some way, possibly on the fatal day, or more probably on a number of earlier occasions, until it was felt that they had gone too far. Probably a visit of five weeks with no clear signs of departure created serious economic and cultural strains.

The stay, remarkable for its length and the closeness of the contact established between the visitors and the indigenous people, produced many records of early Māori life. The events of mid-1772, however, strengthened the view in France that New Zealand was inhabited by dangerous natives and did not warrant an attempt at colonisation.

## Death of Marion du Fresne



When the French navigator Marc Joseph Marion du Fresne stopped in the Bay of Islands in 1772 a series of misunderstandings led to violence. Marion du Fresne and 24 of his crew were killed. The survivors took retribution on the locals, and the incident helped establish a view that Māori were treacherous 'savages'. This romanticised depiction of Marion du Fresne's killing was drawn by the French artist Charles Meryon, who spent time in New Zealand in the 1840s.



1368

**Check - Waikato County Council.**  
**New Zealand - Token Circa 1876 – 1976**

Reg. No: TMR - W49

**Summary:**

New Zealand  
No value (AD)  
Mint: Not known

**Discipline:** Numismatics

**More information**

**Tagged with:** Token / Medallion

**Themes this item is part of:** Numismatics & Philately Collection

**Primary Classification:** Tokens

**Secondary Classification:** New Zealand

**Tertiary Classification:** Checks

**Denomination:** No value

**Inscriptions:** (Edge) Plain  
(Obverse) Waikato / County Council / (Cow- Horse) / 1876 -1976  
(Reverse) County Of Waikato / (Four pictures) / Est 1876 / KA TAHI / HAO TE RANGA

**Shape:** Round

**Size:** 35 mm

**Material:** Silver  
Also some Nickel Tokens

**Weight:** ?? grams

**Issued By** Waikato County



# Waikato County

---

**Waikato County** was one of the counties of New Zealand on the North Island. Under the Local Government (Waikato Region) Reorganisation Order of 1989, nearly all of the county was added to the boroughs of Huntly, Ngāruawāhia, most of Raglan County Council, and a small part of Waipa County Council, to form Waikato District Council.

The council first met on 9 January 1877 at the Court House in Cambridge.

In 1923, Waikato County covered 640 sq mi (1,700 km<sup>2</sup>) and had a population of 8,350, with 128 mi (206 km) of gravel roads, 356 mi (573 km) of mud roads and 12 mi (19 km) of tracks.

The former County Council office at 455 Grey Street in Hamilton East opened in 1910. It has not been greatly altered and is now used by a travel agent. It is protected by a Category B listing in Hamilton City's District Plan. It was replaced by new offices to the rear of it, which had a foundation stone dated 4 February 1971 and were first used for a meeting on 21 March 1972. The old building was leased to the Ministry of Agriculture. After 1989, the new building was used by Waikato District Council and then by Hill Laboratories until 2017. Since 2020 it has been renovated as Hills Village apartments.

<b>Waikato County</b>	
County of New Zealand	
1876–1989	
<b>Capital</b>	Hamilton
<b>History</b>	
• Established	1876
• Disestablished	1989
<b>Today part of</b>	Waikato region



Waikato County Offices about 1910



1370

**Check - Rainbow's End (Theme Park)**  
**New Zealand - Token      Circa ( Opened 1982)**

Reg. No: TMR - R48

(Token 1993?)

**Summary:**

New Zealand

No denomination (AD)

Mint: not recorded.

**Discipline:** Numismatics

-----  
**More information**

**Tagged with:** Ride Token

**Themes this item is part of:** Numismatics & Philately  
Collection

**Primary Classification:** Tokens

**Secondary Classification:** New Zealand

**Tertiary Classification:** Checks

**Denomination:** No value

**Inscriptions:** (Edge) Plain  
(Obverse) Rainbow's / End  
(Reverse) 2 Grooves

**Shape:** Round

**Size:** 27.00 mm

**Material:** Steel

**Weight:**

**Issued By:** Rainbow's End, Theme Park  
Manukau, Auckland, N.Z.





# Rainbow's End (theme park)

From Wikipedia, the free encyclopedia

**Rainbow's End** is a 9.3 hectares (23 acres) theme park in Manukau, Auckland, New Zealand. Rainbow's End includes the main theme park and also Kidz Kingdom, a family entertainment center for children 8 years and under. The park, owned by Rainbows End Theme Park Limited, a subsidiary of Rangatira Limited, is New Zealand's largest theme park and currently employs up to 300 staff.

## History

Opened in 1982 on the site of a former skate park, the park extended its lease in 2010 for another 24 years after five years of discussions with the Manukau City Council. The extension was conditional on reducing its size by 0.4 ha from 9.3 ha to allow for new construction at the nearby law courts (being compensated for the land lost). The agreement with the Council committed the company to re-invest \$3 million every three years into new rides or upgrades.

### Ride History

1982 – Park opens with the Bumper Boats, Mini Golf, Can Am Cars, Mirage Cars and video games

## Rainbow's End



Current Rainbow's End logo is introduced since 2014

<b>Location</b>	Manukau, New Zealand
<b>Coordinates</b>	<span><span><span><span><span>36.994°S</span> <span>174.884°E</span></span></span><span><span>﻿</span> / <span>﻿</span></span><span><span><span>36.994°S 174.884°E</span><span><span>﻿</span> / <span>-36.994; 174.884</span></span></span></span></span></span>
<b>Opened</b>	December 1982
<b>Owner</b>	Rainbow's End Theme Park Limited (subsidiary of Rangatira Limited)
<b>Slogan</b>	Fun On Demand
<b>Operating season</b>	Year-round (except Christmas Day)
<b>Area</b>	9.3 ha (23 acres)



1372

## Check - Southern Furniture.

New Zealand - Token      Circa 2000

Reg. No: TMR - S35

Bought furniture in Ch-Ch store 2004/05

---

### Summary:

New Zealand

No value (AD)

Mint: not recorded.

**Discipline:** Numismatics

---

### More information

**Tagged with:** Tokens / Furniture Tags

**Themes this item is part of:** Numismatics & Philately  
Collection

**Primary Classification:** Tokens

**Secondary Classification:** New Zealand

**Tertiary Classification:** Checks

**Denomination:** No Value

**Inscriptions:** (Edge) Plain  
(Obverse) Southern Furniture / (Picture 3 Pine trees) / Quality NZ  
Made Products  
(Reverse) Blank (2 Holding Marks)

**Shape:** Oval

**Size:** 52.32 mm - 39.94 mm

**Material:** Brass

**Weight:** 10.0 grams + or -

**Issued By:** Southern Furniture  
Ch-Ch





## Check - Souvenir Of New Zealand

### New Zealand - Token      Circa 1967 Lucky Token

Reg. No: TMR - S36

#### Summary:

New Zealand

No value (AD)

Mint: not recorded.

**Discipline:** Numismatics

#### More information

**Tagged with:** Tokens / Souvenir

**Themes this item is part of:** Numismatics & Philately  
Collection

**Primary Classification:** Tokens

**Secondary Classification:** New Zealand

**Tertiary Classification:** Checks

**Denomination:** No Value

**Inscriptions:** (Edge) Plain  
(Obverse) Souvenir Of New Zealand / Kiwi - Tiki - Kiwi / 1967 one cent coin  
(Reverse) Keep Me For Good Luck / 2 stars Tiki Kiwi Tiki / 1 Cent

**Shape:** Round

**Size:** 40.00 mm

**Material:** Aluminium

**Weight:** grams

**Issued By:** No info found.





1374

## Check - New Zealand Internat'l Exhibition New Zealand - Token Circa 1906 - 07

Reg. No: TMR - N113

Also see pages \*1246 & \*1247

### Summary:

New Zealand

Value: No value (AD)

Mint: Not recorded.

**Discipline:** Numismatics

---

### More information

**Tagged with:** Exhibition Token

**Themes this item is part of:** Numismatics & Philately  
Collection

**Primary Classification:** Tokens

**Secondary Classification:** New Zealand

**Tertiary Classification:** Checks

**Denomination:** No value

**Inscriptions:** (Edge) Plain  
(Obverse) New Zealand / Internat'l / Building / Exhibition  
(Reverse) Christchurch / (symbol) / 1906 - 07

**Shape:** Round

**Size:**

**Material:** Brass

**Weight:**

**Issued By:** Christchurch Exhibition, at show.



## Check - Success To New Zealand Rough Riders New Zealand - Token      Circa 1899– 1900

Reg. No: TMR – N28+1

Also see pages 468 &amp; 469

**Summary:**

New Zealand

No value (AD)

Mint: J. Swan Dunedin (?)

**Discipline:** Numismatics**More information****Tagged with:** Commemorative tokens**Themes this item is part of:** Numismatics & Philately Collection**Primary Classification:** Tokens**Secondary Classification:** New Zealand**Tertiary Classification:** Checks**Denomination:** No value

**Inscriptions:** (Edge) Plain  
(Obverse) Success To New Zealand / Horse Shoe Stirrup Axe and Whip / Rough Riders  
(Reverse) British Transvaal War 1899-1900 / (Picture Queen)

**Shape:** Round**Size:** 22.50 mm ?**Material:** Copper**Weight:****Issued By:** South African  
Commemorative Medals



1376

## Check - Christchurch Casino, South Seas Extravaganza New Zealand - Token      Circa 2003

Reg. No: TMR - C83

**Summary:**

New Zealand

Value: No value (AD)

Mint: not recorded.

**Discipline:** Numismatics

---

**More information**

**Tagged with:** Casino / Tokens

**Themes this item is part of:** Numismatics & Philately Collection

**Primary Classification:** Tokens

**Secondary Classification:** New Zealand

**Tertiary Classification:** Checks

**Denomination:** No value

**Inscriptions:** (Edge) Plain  
(Obverse) Christchurch Casino / South Seas Extravaganza 2003  
(Reverse) Blank

**Shape:** Round, With loop

**Size:** 30.34 mm 30.32 mm

**Material:** C&N Enameled

**Weight:** 4.8 grams

**Issued By:** CHRISTCHURCH CASINO



## Check - Hawera, Industrial Exhibition New Zealand - Token Circa 1904

Reg. No: TMR - H31+2

See also pages \*1364 &amp; \*1365

**Summary:**

New Zealand

Value: No value (AD)

Mint: Not recorded.

**Discipline:** Numismatics**More information****Tagged with:** Tokens / Souvenir**Themes this item is part of:** Numismatics & Philately Collection**Primary Classification:** Tokens**Secondary Classification:** New Zealand**Tertiary Classification:** Checks**Denomination:** No Value

**Inscriptions:** (Edge) Plain  
(Obverse) Hawera Industrial Exhibition / 1904 / Crossed Ferns  
(Reverse) Building

**Shape:** Round**Size:** 17.2 mm**Material:** Silver**Weight:** 1.6 grams**Issued By** Hawera Exhibition  
At Exhibition



1378

## Check - The Kauri Museum, Matakoho New Zealand - Token Circa 1962

Reg. No: TMR -T56

---

### Summary:

New Zealand

Value:-No value (AD)

Mint: not recorded.

**Discipline:** Numismatics

---

### More information

**Tagged with:** Token- Souvenir

**Themes this item is part of:** Numismatics & Philately  
Collection

**Primary Classification:** Tokens

**Secondary Classification:** New Zealand

**Tertiary Classification:** Checks

**Denomination:** No value

**Inscriptions:** (Edge) Plain  
(Obverse) The Kauri Museum Matakoho / (pictures) / Real New Zealand Heritage / Since 1962  
(Reverse) New Zealand Tourist Souvenir / Map Kiwi Fern

**Shape:** Round

**Size:** 30.08 mm

**Material:** Brass

**Weight:** 9.4 grams

**Issued By:** The Kauri Museum  
5 Church Road, RD1 Matakoho, Northland



## WELCOME TO THE KAURI MUSEUM

Guardians of the Kauri story, past, present and future.

Ngā kaitiaki o ngā kauri kōrero o nehera, o wātu me te wāheke.

# The Remarkable Story of The Greatest Tree in New Zealand

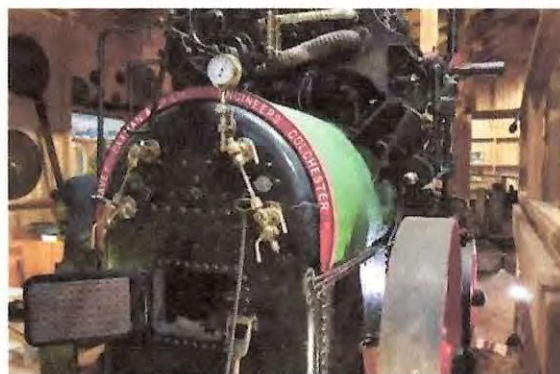
The kauri tree, *Agathis australis*, is New Zealand's largest and most famous native tree. Located midway between Auckland and the Bay of Islands in the warm north of the country, The Kauri Museum tells some of the stories of this amazing tree.

Far more than a museum of timber, the Museum has stories of the Māori of the north eastern Kaipara, of European pioneers, of foresters and sawmillers, gum diggers and farmers, and of business people, fishers and the families who have made this area their home.

Explore these pages for a taste of The Kauri Museum, and then make sure to visit. It's remarkable!



YOUR VISIT



EVENTS & EXHIBITIONS



**The Kauri Museum**  
**5 Church Road,**  
**RD1 Matakōhe**  
**Northland, N.Z.**





## Check - Kaimata School. Taranaki, N.Z. New Zealand - Token Circa 2015

Reg. No: TMR -K19

Anniversary (Only 100 minted)

**Summary:**

New Zealand

Value: No value

Mint: Not recorded.

**Discipline:** Numismatics**More information****Tagged with:** Jubilee /Tokens**Themes this item is part of:** Numismatics & Philately Collection**Primary Classification:** Tokens**Secondary Classification:** New Zealand**Tertiary Classification:** Checks**Denomination:** No value**Inscriptions:** (Edge) Plain(Obverse) Kaimata School / & / District / 125<sup>th</sup> Jubilee / Pupil / 1890 - 2015

(Reverse) (Picture School building and flag pole)

**Shape:** Round**Size:** 49.6 mm**Material:** Bronze**Weight:** grams**Issued By:** Kaimata School & District  
Taranaki N.Z.



1382

## Check - Coffee Culture, (Tour De) Throughout N.Z. New Zealand - Token      Circa 1996 Est.

Reg. No: TMR - C84

---

### Summary:

New Zealand

Value: 1 Coin (AD)

Mint: Not recorded.

**Discipline:** Numismatics

---

### More information

**Tagged with:** Tokens

**Themes this item is part of:** Numismatics & Philately  
Collection

**Primary Classification:** Tokens

**Secondary Classification:** New Zealand

**Tertiary Classification:** Checks

**Denomination:** 1 Coin

**Inscriptions:** (Edge) Plain  
(Obverse) Coffee Culture / 1 / Coin  
(Reverse) Tour De / (picture) / Coffee Culture / Est. 1996 / Coffee Culture

**Shape:** Round

**Size:** 25.00 mm

**Material:** Brass

**Weight:** 6.9 grams

**Issued By:** Coffee Culture  
Through New Zealand





One of many "Coffee Culture's" in New Zealand.  
As this one in Lyttelton.

In the heart of London Street in the historic port town of Lyttelton, Coffee Culture has been providing a relaxing stop for the local community, businesses and visitors from around the world for over 10 years.

It is a fantastic place for meeting with friends, a business meeting or just to relax and watch the world go by.

Leona Cooper, owner of Lyttelton Coffee Culture, has an extensive background providing world class customer service with Air New Zealand and other organisations before combining her passion for great service and the best coffee into a career.

Come meet the team and experience excellent service, delicious food prepared in our state-of-art oven and a freshly ground and expressed coffee.

See you soon!



Open seven days. Coffee Culture brings a touch of the city to Lyttelton and offers a wide range of cafe food options, including freshly toasted bagels with various toppings on offer.

Coffee Culture offers both indoor and outdoor seating on London Street, so patrons can experience the gentle bustle of Lyttelton.

<https://www.facebook.com/CCLyttelton> (<https://www.facebook.com/CCLyttelton>)

## COFFEE CULTURE LYTTTELTON

### Contact name

Raman & Team

### Contact Phone

(03) 328 7080 or 022 028 4444 (tel:%2803%293287080or0220284444)

### Contact email

lyttelton@coffeeculture.co.nz (mailto:lyttelton@coffeeculture.co.nz)

### Website

<https://coffeeculture.co.nz/stores/lyttelton/>  
(<https://coffeeculture.co.nz/stores/lyttelton/>)

### Location

18 London Street





1384

**Check - Akaroa Banks Peninsula  
New Zealand - Token**

**Circa**

Reg. No: TMR - A65

**Summary:**

New Zealand  
Value: No value  
Mint: Not recorded.

**Discipline:** Numismatics

**More information**

**Tagged with:** Souvenir token

**Themes this item is part of:** Numismatics & Philately Collection

**Primary Classification:** Tokens

**Secondary Classification:** New Zealand

**Tertiary Classification:** Checks

**Denomination:** No value

**Inscriptions:** (Edge) Plain  
(Obverse) New Zealand / Akaroa / Banks Peninsula / Lighthouse  
(Reverse) (Dolphin picture) / Akaroa / Dolphins / The Intimate Nature Experience

**Shape:** Round

**Size:** 28.00 mm

**Material:** Brass

**Weight:** 7.0 grams

**Issued By:** Souvenir Shops



# Akaroa Dolphin Swim – One of the Most Incredible Things to do in Akaroa, New Zealand

Last updated: June 11, 2020 · 2 Comments

Have you always wanted to swim with wild dolphins? I always thought of swimming with dolphins as some mythical ["bucket list" experience](#) I'd love to do *one day*... But in my head, such experiences were reserved for far-flung tropical locales in Central America or the Caribbean.

It wasn't until I returned to my homeland of New Zealand for a holiday recently, that I discovered New Zealand is not only regarded as one of the best places to swim with dolphins in the wild, but the Cantabrian town of Akaroa is also the only place to swim with the world's smallest – Hector's Dolphin!

---

## Swimming with Dolphins in Akaroa

The small seaside village of **Akaroa** is just an hour's drive from New Zealand's third-largest city, Christchurch. It is located on the Banks Peninsula, which was originally home to two large volcanic cones. Their craters now take form as the Lyttelton and Akaroa Harbours.



A town with a tumultuous past, Akaroa was discovered by French sailor Jean François Langlois in 1838. He decided it would make a good whaling town and purchased the land from local Māori before heading home to France.



1386

**Check - Laundromat. Throughout N.Z.  
New Zealand - Token      Circa 2020's**

Reg. No: TMR - L10+1

**Summary:**

New Zealand

Value: No value

Mint: Not recorded.

**Discipline:** Numismatics

**More information**

**Tagged with:** Shop tokens/machine

**Themes this item is part of:** Numismatics & Philately Collection

**Primary Classification:** Tokens

**Secondary Classification:** New Zealand

**Tertiary Classification:** Checks

**Denomination:** No value

**Inscriptions:** (Edge) Plain  
(Obverse) Laundromat / Laundromat / Laundromat / Picture machine  
(Reverse) Laundry / Picture machine / Token

**Shape:** Round

**Size:** 25.07 mm

**Material:** C/N

**Weight:** 9.1 grams

**Issued By** Laundromat  
Throughout, N.Z.





**Proudly New Zealand Owned  
& Operated.**

**Has 13 Laundry Stores in N.Z.**

## Crystal Laundromat

The biggest and the best laundromat in New Zealand. Open 7 days from 6.00 am to 9.00 pm



### Washers

Don't forget your laundry detergent! Its really intuitive and instructions are on the machine:

1. Load Clothes
2. Close Door
3. Select Wash cycle & temperature
4. Add supplies (pre-wash, washing powder, softener, bleach)
5. Make payment (EFTPOS)
6. Push Start on the washer!

\*Prices are outlined on the machine you are using.



**One of many  
"Laundromat's"  
in New Zealand.**

### Dryers

To operate our dryers:

1. Load Clothes
2. Close Door
3. Select Temp (High, Med, Low, Delicate)
4. Go to the EFTPOS terminal for the machine and select the number of minutes\* then make the payment.
5. Push Start on the dryer!

\*Prices are outlined on the machine you are using. As a guide about 30-45 mins is needed for an average load of clothes on medium heat. Fuller loads, heavy towels, duvets and down items (sleeping bags, duvets and jackets) will need longer.





1388

## Check - Canterbury Jubilee. 1850 - 1900

### New Zealand - Token      Circa 1900

Reg. No: TMR - C85

Also see page \*1072

#### Summary:

New Zealand

Value: No value (AD)

Mint: Not recorded.

**Discipline:** Numismatics

---

#### More information

**Tagged with:** Token

**Themes this item is part of:** Numismatics & Philately Collection

**Primary Classification:** Tokens

**Secondary Classification:** New Zealand

**Tertiary Classification:** Checks

**Denomination:** No value

**Inscriptions:** (Edge) Plain  
(Obverse) Canterbury / Shield and Flags / 1850 - 1900 / Jubilee  
(Reverse) Blank with holding pin

**Shape:** Round

**Size:** 34.65 mm

**Material:** Tin / Paper / Cellulose

**Weight:** 3.8 grams

**Issued By:** New Zealand



## Front view of the Canterbury Jubilee Exhibition building, Christchurch



Canterbury jubilee street decorations



North Colombo Street is richly decorated for the Canterbury jubilee (50th anniversary) in December 1900. The decorations were designed by noted architect Hurst Seager. Twenty-thousand yards of muslin, in 11 different colours, was suspended from Venetian masts in the centre of the city. In Colombo Street the colours were pale blue, pale yellow, cream and white.



# Token - Splash Palace Access Token



© Mike Bentley (CC BY-NC)

## Features

<b>Location</b>	<a href="#">New Zealand</a> 🇳🇿
<b>Queen</b>	<a href="#">Elizabeth II (1952-2022)</a>
<b>Type</b>	Automatic tokens › <a href="#">Access token</a>
<b>Composition</b>	Brass
<b>Weight</b>	5 g
<b>Diameter</b>	23 mm
<b>Thickness</b>	1.2 mm
<b>Shape</b>	Round
<b>Technique</b>	Milled
<b>Orientation</b>	Medal alignment ↑↑
<b>Number</b>	N#310842 <a href="#">?</a>

## Obverse

Text with 2 Adult and 1 Child symbol

**Script:** Latin

**Lettering:**

Property of  
SPLASH PALACE

## Reverse

Text with 2 Adult and 1 Child symbol

**Script:** Latin

**Lettering:**

Property of  
SPLASH PALACE

## Edge

Smooth

## Comments

<https://icc.govt.nz/splashpalace/>

Splash Palace, Invercargill:- One of many throughout New Zealand.

Drive up, jump out, dive in! The Southland Aquatic Centre – Splash Palace – is one of the top public pool facilities in New Zealand. The indoor aquatic centre is within walking distance of the central business district and close to a large selection of motels and parks. The facility includes a 50m x 8 lane sports pool with a bulkhead, a leisure pool with waves and sprays, a tots' pool and a learners' pool. There is also a water slide, spa pool, sauna and a cafe – all indoors and with free off-street car parking.



### General Information ^

- The Splash Palace has proper arrangement for toilets suiting all age groups.
- There is ample parking available at the Splash Palace.
- This place is also suitable for those children who are under the age of five years.
- However, Splash Palace does not allow prams inside the premises.
- Alcohol and drugs are strictly prohibited.
- Except for guide dogs, no other animal is allowed inside.
- Diving is neither permitted in the learner's pool nor in the shallow end of the main pool.
- Proper swimwear is supposed to be worn while swimming. No pants and capris allowed.
- The Splash Palace prohibits smoking and bringing a glass of any type to the premises.
- The Splash Palace is quite strict about its supervision rules. One adult can supervise a maximum of two children under the age of seven.
- Children below the age of six years must wear a yellow band at all times.
- Children aged seven years must wear a lime green wrist band at all times.
- Children under the age of seven must be supervised by an adult at arm's distance who is above sixteen years of age.
- The Splash Palace is closed on Good Friday. For other holiday notifications, get in touch with the information centre of Splash Palace.



1392

**Check - Stevenson & Cook, Port Chalmers.  
New Zealand - Token      Circa 1903 - 1942**

Reg. No: TMR - S13+1

Also see pages 738 & 739

**Summary:**

New Zealand

No denomination (AD)

Mint: Not known

**Discipline:** Numismatics

---

**More information**

**Tagged with:** Tool check tokens

**Themes this item is part of:** Numismatics & Philately Collection

**Primary Classification:** Tokens

**Secondary Classification:** New Zealand

**Tertiary Classification:** Checks

**Denomination:** No value

**Inscriptions:** (Edge) Plain  
(Obverse) Stevenson & Cook / Ltd. / 210 / Ship Builders  
(Reverse) Blank/uniface

**Shape:** Oval, Two holes

**Size:** 29.11 mm – 22.56 mm

**Material:** Brass

**Weight:** 5.0 grams

**Issued By:** STEVENSON & COOK  
BEACH ST. PORT CHALMERS



# Sunday Telegraph XIV Commonwealth Games Auckland



Reg. No: TMR - X9

## Event Souvenir / Medal

### Features

<b>Location</b>	Australia 🇦🇺
<b>Queen</b>	Elizabeth II (1952-2022)
<b>Type</b>	Souvenir medals › Event souvenir
<b>Year</b>	1990
<b>Composition</b>	Stainless steel
<b>Weight</b>	8.03 g
<b>Diameter</b>	27 mm
<b>Thickness</b>	1.5 mm
<b>Shape</b>	Round
<b>Technique</b>	Milled
<b>Orientation</b>	Medal alignment ↑↑
<b>Number</b>	N# 181248

### Commemorative issue

XIV Commonwealth Games 1990

### Obverse

Celebrating athlete in front of Australian Flag

#### Lettering:

XIV COMMONWEALTH GAMES • AUCKLAND 1990  
JANUARY 24th • FEBRUARY 3rd

### Reverse

Two running athletes

#### Lettering:

Sunday Telegraph  
SOUVENIR MEDAL

### Edge

Smooth





1394

# Check - Waitomo Caves. Tourist Dollar New Zealand - Token                      Circa 2000's

Reg. No: TMR - W50

---

**Summary:**

New Zealand  
No Value (AD)  
Mint: not recorded.

**Discipline:** Numismatics

---

**More information**

**Tagged with:** Tokens / Tourist  
**Themes this item is part of:** Numismatics & Philately Collection

**Primary Classification:** Tokens

**Secondary Classification:** New Zealand

**Tertiary Classification:** Checks

**Denomination:** No value

**Inscriptions:** (Edge) Plain  
(Obverse) Waitomo Caves / (pictures) / Where two landscapes meet  
(Reverse) New Zealand Tourist Dollar / Map Of New Zealand

**Shape:** Round

**Size:** 30.40 mmm - 30.43 mm

**Material:** Brass

**Weight:** 12.1 grams

**Issued By:** Tourist Stores





# Waitomo Glowworm Caves

Coordinates: 38.2608°S 175.1036°E

The **Waitomo Glowworm Caves** attraction is a cave at Waitomo on the North Island of New Zealand. It is known for its population of *Arachnocampa luminosa*, a glowworm species found exclusively in New Zealand. This cave is part of the waitomo streamway system that includes the Ruakuri Cave, Lucky Strike, and Tumutumu Cave.

The attraction has a modern visitor centre at the entrance, largely designed in wood. There are organized tours that include a boat ride under the glowworms.



Glow worms in the Waitomo Caves

## History

The name "Waitomo" comes from the Māori words *wai*, water and *tomo*, hole or shaft. The local Māori people had known about the caves for about a century before a local Māori, originally from Kawhia, Tane Tinorau, and English surveyors, Laurence Cussen and Fred Mace, were shown the entrance in 1884 and Tane and Fred did extensive explorations in 1887 and 1888. Their exploration was conducted with candlelight on a raft going into the cave where the stream goes underground (now the cave's tourist exit.) As they began their journey, they came across the Glowworm Grotto and were amazed by the twinkling glow coming from the ceiling. As they travelled further into the cave by poling themselves towards an embankment, they were also astounded by the limestone formations. These formations surrounded them in all shapes and sizes.

They returned many times after and Chief Tane independently discovered the upper level entrance to the cave, which is now the current entrance. Visitor access improved when the railway was extended to Ōtorohanga in 1887. By 1889 Tane Tinorau and his wife Hutu had opened the cave to visitors and were leading groups for a small fee. Thomas Humphries, (Commissioner of Crown Lands and Chief Surveyor of Auckland 1889 – 1891) did a full study later the same year, noting graffiti had already been inscribed on the 'most delicate portions' of the cave, though noting "*The natives are now taking great care of the caves*", but recommending that government take over the cave to provide more visitor facilities. About 500 tourists visited the cave in the first two years. After years of attempts to buy the caves, the government used the Scenery Preservation Act 1903 and the Public Works Act 1905 to take them over for £625. In 1906, after an escalation in vandalism, the administration of the cave was taken over by the government. In 1910 the Waitomo Caves Hotel was built to house the many visitors.

Tourist Hotel Corporation, a state-owned business, took over in 1957. The hotel was sold to Southern Pacific Hotels Corporation in 1990 and, in 1994, they agreed a licence for the caves with DOC and the Māori owners, selling it to Tourism Holdings Limited in 1996.

In 1989, the land and cave were returned to the descendants of Chief Tane Tinorau and Hutu who comprise many of the employees of the caves today. The descendants receive a percentage of the cave's revenue and are involved in its management and development under the 1990 Waitomo Deed of Settlement.





1396

## Check - Z Energy Limited New Zealand - Token Circa 2012 ?

Reg. No: TMR -Z1+1

(No "Z") See pages 1304 &1305

---

### Summary:

New Zealand  
(AD) no value  
Mint: not recorded.

**Discipline:** Numismatics

---

### More information

**Tagged with:** Charity tokens

**Themes this item is part of:** Numismatics & Philately Collection

**Primary Classification:** Tokens

**Secondary Classification:** New Zealand

**Tertiary Classification:** Checks

**Denomination:** No value

**Inscriptions:** (Edge) Plain  
(Obverse) Blank  
(Reverse) Blank

**Shape:** Round

**Size:** 29.21 - 29.26 mm

**Material:** Orange Plastic

**Weight:** 2.2 grams

**Issued By:** Z Energy Limited



## Check - Coronation, Edward V11 New Zealand - Token      Circa 1901

Reg. No: TMR - C86

### Summary:

New Zealand

Value: No Value (AD)

Mint: Not recorded.

**Discipline:** Numismatics

### More information

<b>Tagged with:</b>	Token
<b>Themes this item is part of:</b>	Numismatics & Philately Collection
<b>Primary Classification:</b>	Tokens
<b>Secondary Classification:</b>	New Zealand
<b>Tertiary Classification:</b>	Checks
<b>Denomination:</b>	No Value
<b>Inscriptions:</b>	(Edge) Plain (Obverse) Alexander * Coronation * Edward V11 / Picture / 1902 (Reverse) Edward V11 / Wording / New Zealand / Celebrations
<b>Shape:</b>	Heart (Crown on Top)
<b>Size:</b>	26.8 mm
<b>Material:</b>	Copper
<b>Weight:</b>	8.8 grams
<b>Issued By:</b>	N.Z. Govt.





1398

**Check -WASHWORLD. Te Rapa, Hamilton**  
**New Zealand - Token Circa 1984 (St. Lukes, Ak.)**

Reg. No: TMR-W36+1

Also see pages \*1066 & \*1067

**Summary:**

New Zealand

No value. On token (AD)

Mint: Not known

**Discipline:** Numismatics

**More information**

**Tagged with:** Carwash tokens

**Themes this item is part of:** Numismatics & Philately Collection

**Primary Classification:** Tokens

**Secondary Classification:** New Zealand

**Tertiary Classification:** Checks

**Denomination:** Value ?

**Inscriptions:** (Edge) Plain  
(Obverse) WASHWORLD TE RAPA/ (Picture) /  
[www.goodcleanfun.co.nz](http://www.goodcleanfun.co.nz)  
(Reverse) No Cash Value / Wash Token / No Cash Value

**Shape:** Round

**Size:** 24.98 - 25.01 mm

**Material:** Bi-metal

**Weight:** 6.2 grams

**Issued By:** Washworld (Car Washers )  
Auckland & Hamilton





📍 **Address:** 550 Te Rapa Rd, Te Rapa, Hamilton 3200, New Zealand

☎ **Phone:** 07-849 9202

🌐 **Website** (<http://www.goodcleanfun.co.nz/>)

**State:** Waikato

**City:** Hamilton

**Zip Code:** 3200





1400

# Check - Queenstown New Zealand - Token      Circa 2022

Reg. No: TMR - Q13

**Summary:**

---

New Zealand  
No value(AD)  
Mint: not recorded.

**Discipline:** Numismatics

---

More information

**Tagged with:** Token / Tourist Dollar  
**Themes this item is part of:** Numismatics & Philately Collection

**Primary Classification:** Tokens

**Secondary Classification:** New Zealand

**Tertiary Classification:** Checks

**Denomination:** No value

**Inscriptions:** (Edge) Plain  
(Obverse) Queenstown / Shotover River / TSS Earnslaw / Skyline Gondola  
(Reverse) New Zealand Tourist Dollar / Map of New Zealand

**Shape:** Round 3mm Thick

**Size:** 46.00 mm

**Material:** Copper

**Weight:** grams

**Issued By:** Tourist Stores



# Queenstown, New Zealand

Coordinates: 45°01′52″S 168°39′45″E

**Queenstown** (Māori: *Tāhuna*) is a resort town in Otago in the south-west of New Zealand's South Island. It has an urban population of 15,800 (June 2022).

The town is built around an inlet called Queenstown Bay on Lake Wakatipu, a long, thin, Z-shaped lake formed by glacial processes, and has views of nearby mountains such as The Remarkables, Cecil Peak, Walter Peak and just above the town, Ben Lomond and Queenstown Hill.

The Queenstown-Lakes District has a land area of 8,704.97 square kilometres (3,361.01 sq mi) not counting its inland lakes Hāwea, Wakatipu, and Wānaka. The region has an estimated resident population of 49,500 (June 2022). Neighbouring towns include Arrowtown, Glenorchy, Kingston, Wānaka, Alexandra, and Cromwell. The nearest cities are Dunedin and Invercargill. Queenstown is known for its commerce-oriented tourism, especially adventure and ski tourism.

## History

### Māori settlement and presence

The area was discovered and first settled by Māori. Kāi Tahu say that the lake was dug by the Waitaha ancestor, Rākaihautū, with his *kō* (digging stick) named Tūwhakaroria. After arriving at Whakatū Nelson in the waka Uruao, Rākaihautū divided his crew into two. He led one group through the interior of Te Waipounamu, digging the freshwater lakes of the island. After digging the lakes Hāwea, Wānaka, and Whakatipu Waimāori, he travelled through the Greenstone and Hollyford valleys before finally digging Whakatipu Waitai (Lake McKerrow).

The first non-Māori to see Lake Wakatipu was European Nathanael Chalmers who was guided by Reko, the chief of the Tukurau, over the Waimea Plains and up the Mataura River in September 1853. Evidence of stake nets, baskets for catching eels, spears and ashes indicated the Glenorchy area was visited by Māori. It is likely Ngāi Tahu Māori visited Queenstown en route to collect Pounamu (greenstone). A settlement called Te Kirikiri Pa was occupied by the tribe of Kāti Māmoe which was situated where the Queenstown Gardens are today, but by the time European migrants arrived in the 1860s this settlement was no longer being used.

### European settlement c. 1860

### Queenstown

*Tāhuna* (Māori)

Resort town



Queenstown from Bob's Peak

Coordinates: 45°01′52″S 168°39′45″E

<b>Country</b>	<span><span><span></span></span><span> </span></span> New Zealand
<b>Region</b>	<span><span><span></span></span><span> </span></span> Otago
<b>Territorial authority</b>	Queenstown-Lakes District
<b>Named</b>	January 1863
<b>Founded by</b>	William Gilbert Rees
<b>Electorates</b>	Southland Te Tai Tonga
<b>Government</b>	
<span> </span> • <b>Mayor</b>	Glyn Lewers
<span> </span> • <b>MPs</b>	Joseph Mooney (National) Rino Tirikatene (Labour)
<b>Area</b> <sup>[2]</sup>	
<span> </span> • <b>Urban</b>	28.36 <span> </span> km <sup>2</sup> (10.95 <span> </span> sq <span> </span> mi)
<b>Population</b> (June 2022)	
<span> </span> • <b>Urban</b>	15,800



1402

## Check - Gisborne Cosmopolitan Club Inc

New Zealand - Token      Circa 2000's

Reg. No: TMR - G11

---

### Summary:

New Zealand

No value (AD)

Mint: not recorded.

**Discipline:** Numismatics

---

### More information

**Tagged with:** Tokens / Souvenir Coins

**Themes this item is part of:** Numismatics & Philately Collection

**Primary Classification:** Tokens

**Secondary Classification:** New Zealand

**Tertiary Classification:** Checks

**Denomination:** No Value

**Inscriptions:** (Edge) Plain  
(Obverse) Gisborne / Ship picture / Inc / Cosmopolitan Club  
(Reverse) Back plain stippled pattern

**Shape:** Round

**Size:** 27.00 mm

**Material:** Copper ??

**Weight:** grams

**Issued By:** Club Token





**Ship on picture and on token, may represent:- Endeavour.**

## Welcome to the Gisborne Cosmopolitan Club

Situated on the sunny East Coast on the North Island, New Zealand. Known for it's excellent weather and beautiful beaches, Gisborne is the City of firsts. First City in the world to see the Sun, First landing place of the migrational waka Horouta, First landing place of the European explorer Capt James Cook on October 7th 1769.

**DURING AUGUST 2004 WE CELEBRATED 100 YEARS SINCE THE FIRST DRINK IN AN OLD SHED.**

### Description

'Cossie Club', 'Cosie' - welcomes all members, guests and affiliated members to enjoy spacious lounges, Gaming machines, TAB facilities, several bars to choose from, Pool and Snooker Tables, Outdoor Dining area, BBQ, Restaurant and Bistro, Conference facilities and Live Entertainment every Friday, a library attached, darts, indoor and outdoor bowls, Bar meals available when bistro closed.

### Contact Details

#### **Physical Address**

Grey and Derby Streets  
Gisborne 4010



1404

## Check - Addington Trotting Club. Christchurch New Zealand - Token Circa 1933

Reg. No: TMR - A66

### Summary:

New Zealand

Value: No value (AD)

Mint: Not recorded.

**Discipline:** Numismatics

---

### More information

**Tagged with:** Guest / Token

**Themes this item is part of:** Numismatics & Philately  
Collection

**Primary Classification:** Tokens

**Secondary Classification:** New Zealand

**Tertiary Classification:** Checks

**Denomination:** No value

**Inscriptions:** (Edge) Plain  
(Obverse) Official Guest / Inter-Dominion Racing Championship /  
A.T.C. / 1933 / (Picture ) Horse & Sulky  
(Reverse) Blank

**Shape:** Round with loop

**Size:** 36.30 mm - 32.84 mm

**Material:** C&N / silver? not  
marked

**Weight:** 9.6 grams

**Issued By:** Addington Raceway  
Chrstchurch



## Check - Canadian Moose N.Z. Tour New Zealand - Token Circa 1998

Reg. No: TMR - C87

### Summary:

New Zealand

Value: No Value (AD)

Mint: Not recorded.

**Discipline:** Numismatics

### More information

**Tagged with:** Tour / tokens

**Themes this item is part of:** Numismatics & Philately  
Collection

**Primary Classification:** Tokens

**Secondary Classification:** New Zealand

**Tertiary Classification:** Checks

**Denomination:** No value

**Inscriptions:** (Edge) Plain  
(Obverse) Canadian Moose / Maple leaf / N.Z. / Tour / 1998  
(Reverse) Ice Net / Crossed hockey sticks / Skating boot

**Shape:** Round with loop

**Size:** 32.20 mm - 36.36 mm

**Material:** Stainless steel/ Brass

**Weight:** 13.7 grams

**Issued By:** International Ice  
Hockey Ass.





1406

**Check - Soccer Otago. Dunedin. New Zealand  
New Zealand - Token Circa 2006?**

Reg. No: TMR - S38

---

**Summary:**

New Zealand  
No value (AD)  
Mint: not recorded.

**Discipline:** Numismatics

---

More information

**Tagged with:** Winner Token

**Themes this item is part of:** Numismatics & Philately  
Collection

**Primary Classification:** Tokens

**Secondary Classification:** New Zealand

**Tertiary Classification:** Checks

**Denomination:** No Value

**Inscriptions:** (Edge) Plain  
(Obverse) Soccer Otago / Crown-Shield -Wreath / Soccer Otago /  
League / Winner  
(Reverse) Blank ( Holding Hook)

**Shape:** Rectangle

**Size:** 54 mm x 35mm

**Material:** Metal & Resin

**Weight:** grams

**Issued By:** Melchester Rovers  
Dunedin, New Zealand





# MELCHESTER ROVERS

## ASSOCIATION FOOTBALL CLUB

### About Us

#### Melchester Rovers Soccer Club

We are a football (soccer) club located in Dunedin, New Zealand.

We have a senior grade for our adult members called the Melchester Rovers AFC. Our senior club consists of a few teenagers, some in their 20s and early 30s, but most of our senior members are over 35 and are parents of the kids in our Junior Club.

#### Establishment of Club

Our club was initially established in 2002 and has evolved into a large well established club over the years. To find out more detailed background of our club, check out our history page. To find out more about the club's name sake, check out our Roy of Rovers page.



# MELCHESTER ROVERS

## JUNIOR FOOTBALL CLUB

### History

After communication with Melchester Rovers AFC negotiated by other Dunedin Clubs and involving Soccer Otago, a decision to amalgamate with Melchester Rovers AFC, a recently formed senior club, was made.

At this time the junior club was left without uniforms, grounds or clubrooms. Other Dunedin Clubs rallied to support, resulting in the provision of training grounds by the Dunedin City Council, and uniforms from the Dunedin City AFC juniors. A huge thank you goes to the founding Committee Members, who stood their ground in very difficult circumstances, supported by loyal parents and players. The "MIGHTY" Melchester Rovers Junior Soccer Club was born!

In 2001 there had been 13 junior teams, whereas in 2002 when the Melchester Rovers Junior Soccer Club was first formed there were 18 junior teams. In 2003 a competition was held for the players to design a new uniform and club logo, which resulted in "Mr Ball" (in the header above), and the following Mission Statement and Philosophies were also formed:

"To encourage our Junior members to enjoy playing soccer, develop their skills and to compete within the spirit of fair play"

"We will encourage our players to strive to give their best effort to win each game within the spirit and rules of the sport"



1408

## Check - Canterbury Park. Trotting Club New Zealand - Token      Circa 1952-53

Reg. No: TMR - C88

### Summary:

New Zealand

Value: No value (AD)

Mint: Stokes

**Discipline:** Numismatics

---

### More information

**Tagged with:** Token, Members Entry  
Pass

**Themes this item is  
part of:** Numismatics & Philately  
Collection

**Primary Classification:** Tokens

**Secondary  
Classification:** New Zealand

**Tertiary Classification:** Checks

**Denomination:** No value

**Inscriptions:** (Edge) Plain  
(Obverse) Canterbury Park / C 1952 - 53 P / Trotting / Club  
(Reverse) Not / Transferable / 439

**Shape:** Diamond with loop

**Size:** 36.80 mm - 32.32 mm

**Material:** Brass & Colour enamel

**Weight:** 8.3 grams

**Issued By:** Canterbury Park Club  
New Zealand



## Check - New Zealand Post. Olympics New Zealand - Token Circa 1992

Reg. No: TMR - N114

### Summary:

New Zealand  
No value (AD)  
Mint not recorded.

**Discipline:** Numismatics

### More information

**Tagged with:** Commemorative/ Tokens

**Themes this item is part of:** Numismatics & Philately Collection

**Primary Classification:** Tokens

**Secondary Classification:** New Zealand

**Tertiary Classification:** Checks

**Denomination:** No value

**Inscriptions:** (Edge) Plain  
(Obverse) New Zealand Post / (Letter Picture) / Olympics / 1992  
(Reverse) Blank

**Shape:** Round with loop

**Size:** 25.35 mm - 27.39 mm

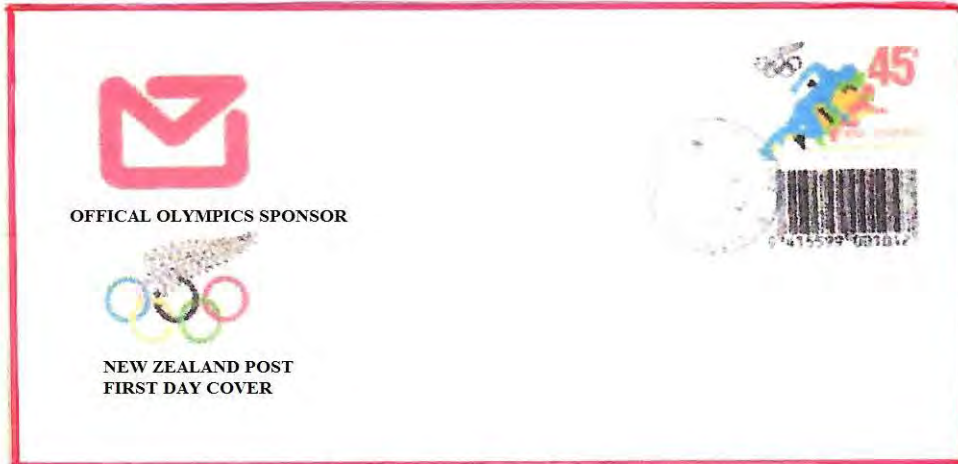
**Material:** Copper

**Weight:** 8.4 grams

**Issued By:** N Z Post  
Wellington







\*\*\*\*\*

**New Zealand 1992 Olympics with Bar Code FDC | Australia & Oceania - New Zealand, General Issue Stamp**

First day cover with stamp affixed. Cancelled on the first day of issue. As Per Scan. All items are securely packed then sent worldwide via ...

\* Check website for latest pricing and availability. Images may be subject to copyright. [Learn More](#)



\*\*\*\*\*

## Check - Philex 91 Ch-Ch Exhibition New Zealand - Token                      Circa 1991

Reg. No: TMR - P41

### Summary:

New Zealand  
No denomination(AD)  
Mint: No record

**Discipline:** Numismatics

### More information

**Tagged with:** Tokens

**Themes this item is part of:** Numismatics & Philately Collection

**Primary Classification:** Tokens

**Secondary Classification:** New Zealand

**Tertiary Classification:** Checks

**Denomination:** No value

**Inscriptions:** (Edge) Plain  
(Obverse) Philex 91 / Kiwi / New Zealand / Christchurch / 3 Stars each side

(Reverse) Blank

**Shape:** Round

**Size:** 51.04 mm - 51.02 mm

**Material:** Bi metal  
Copper Silver Centre

**Weight:** 57.3 grams

**Issued By:** Philatelic Society  
New Zealand





1412

## Check - New Zealand & South Seas Exhibition New Zealand - Token Circa 1889 - 90

Reg. No: TMR - N105+3

---

**Summary:**

New Zealand

Value: No value (AD)

Mint: Stokes & Martin

**Discipline:** Numismatics

---

**More information**

**Tagged with:** Token / Medal

**Themes this item is part of:** Numismatics & Philately Collection

**Primary Classification:** Tokens

**Secondary Classification:** New Zealand

**Tertiary Classification:** Checks

**Denomination:** No Value

**Inscriptions:** (Edge) Plain  
(Obverse) New Zealand & South Seas Exhibition. / (Building) / 1889 - 90.  
(Reverse) Shield and Flags

**Shape:** Round (pierced)

**Size:** 22.5 mm

**Material:** Gilt Bronze

**Weight:** grams

**Issued By:** Exhibition sales  
Also see pages 1264 & 1265



WIKIPEDIA  
The Free Encyclopedia

# New Zealand and South Seas Exhibition (1889)

The **New Zealand and South Seas Exhibition** was an international exhibition held in Dunedin, New Zealand from 26 November 1889 to 19 April 1890.

## Organization

D. H. Hasting proposed the hosting of an international exhibition in Dunedin, New Zealand to celebrate the golden jubilee in 1890 of the proclamation of British sovereignty over New Zealand in 1840. A meeting was held on 25 October 1888 to form an organizing committee. John Roberts was elected president and Richard Twopeny, executive commissioner. Alfred Lee Smith was one of the directors of the exhibition.

The national government officially recognized the New Zealand and South Seas Exhibition, and granted £10,000 for its organization.

## Architecture

A site of about 121 acres was donated by the Otago Harbour Board, bounded by Crawford, Anderson's Bay, Cumberland, and Jervois Streets. The main building was designed by James Hislop and built by contractors McMath and Walker of Invercargill. The building consisted of several annexes and halls forming an irregular quadrilateral with its longest side measuring 1,162 feet and a total width of 465 feet. A huge dome 50 feet in diameter rose 80 feet above the main entrance and was covered in eight tons of lead.

The main building was described as being of Moorish design. Inside, there were large arches draped with velvet curtains and bordered by wooden spandrels decorated with New Zealand ferns and flowers, mirrors and baskets of flowers, and a multi-coloured decorated ceiling. Friezes above the arches were decorated with inspiring mottoes on gold backgrounds: *Fax mentis incendium gloriæ* (Glory is the torch of the mind); *Forti omne solum patria* (The man of courage makes every land his home); *Virtutem sequitur gloria* (Merit wins credit); and *Labor omnia vincit improbus* (Incessant toil conquers all). A statue of Queen Victoria stood on a pedestal directly under the dome.



The main fair building of the exhibition, Dunedin



Plan of the various exhibition areas



Interior views of the exhibition halls



1414

## Check -W.S. Rutherford Auckland New Zealand - Token Circa 1914

Reg. No: TMR - W51

(Presumed attribution)

### Summary:

New Zealand

Penny(AD) No value

Mint: not recorded.

**Discipline:** Numismatics

---

### More information

**Tagged with:** Token

**Themes this item is part of:** Numismatics & Philately Collection

**Primary Classification:** Tokens

**Secondary Classification:** New Zealand

**Tertiary Classification:** Checks

**Denomination:** No value

**Inscriptions:** (Edge) Plain  
(Obverse) W.S. Rutherford Auckland 19114 / Picture as shown  
(Reverse) Plain

**Shape:** Round

**Size:** 32.00 mm

**Material:** Aluminium ???

**Weight:** ?? grams

**Issued By:** W.S. Rutherford Auckland  
No info:- Could be a buisness /???  
WW1 Service person



## Check - Rotorua Centennial, Guinea New Zealand - Token      Circa 1980

Reg. No: TMR - R20+1

### Summary:

New Zealand

Value: No denomination (AD)

Mint: Not recorded.

**Discipline:** Numismatics

### More information

**Tagged with:** Centennial tokens

**Themes this item is part of:** Numismatics & Philately  
Collection

**Primary Classification:** Tokens

**Secondary Classification:** New Zealand

**Tertiary Classification:** Checks

**Denomination:** No value

**Inscriptions:** (Edge) PLAIN  
(Obverse) Rotorua / Crest / Centennial Guinea  
(Reverse) 100 / Rotorua / 1880 Centennial 1980 / New Zealand

**Shape:** Round

**Size:** 40.00 mm

**Material:** Aluminium / C&N ??

**Weight:** grams

**Issued By:** Rotorua City  
Also see :- Page 680.

The above could be another material.?





1416

## Check - Allens Battery & Electrical Services New Zealand - Token      Circa 1980's ?

Reg. No: TMR - A67

### Summary:

New Zealand

Value: No value

Mint: No Info

**Discipline:** Numismatics

---

### More information

**Tagged with:** Token

**Themes this item is part of:** Numismatics & Philately  
Collection

**Primary Classification:** Tokens

**Secondary Classification:** New Zealand

**Tertiary Classification:** Checks

**Denomination:** No value

**Inscriptions:** (Edge) Plain  
(Obverse) 12 Round Items / Allens / Round Item / Battery  
(Reverse) 12 Round Items / Patent / Round Item

**Shape:** Round

**Size:** 29.00 mm

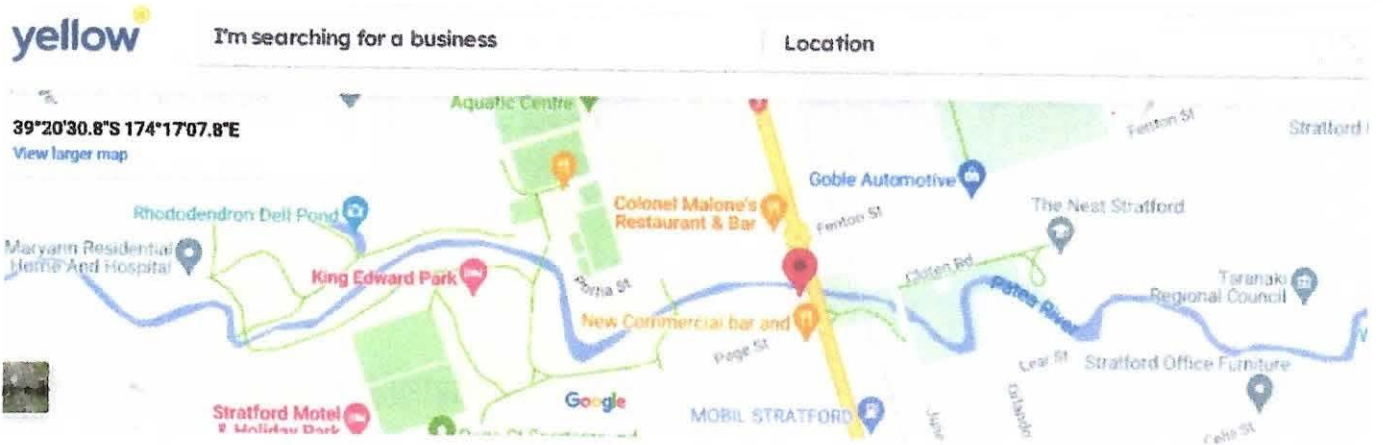
**Material:** Copper, brass, nickel ??

**Weight:** 10.97 grams

**Issued By:** Allens Battery & Electrical Services  
333 Broadway South,  
Stratford, New Zealand

See the next pages:- For some history of this Token.



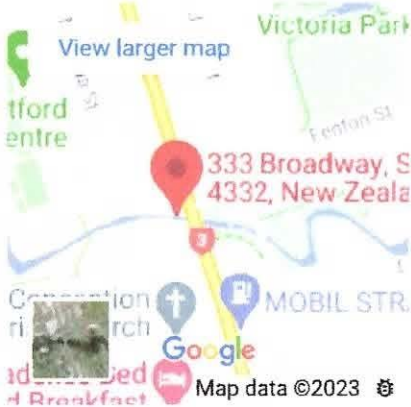


## Allens Battery & Electrical Services

Stratford

**Business Phone:** 06 765 7712

**Location Map:**



**Unusual Token**

333 Broadway South, Stratford, New Zealand

**We are Allens Battery & Electrical Services. In Tananaki. Colin Allen Retired, his eldest son, Stephen still runs the business, but is in the process of closing down 2000**



## Boyd's Battery

The **Boyd's Battery** (or *Boyd's Miniature Galvanic Battery*) is an electro-therapeutic medical medallion ([/wiki/Medical\\_medallion](#)), advertised as a generator of healing electric current for the wearer, where this current was said to be produced by the reaction of the varying metals constituting the battery with the wearer's skin (as a galvanic response).

### Background

The battery was advertised as having been invented by Professor J.C. Boyd ([/wiki/John\\_C\\_Boyd](#)), for whom it is named, and sold beginning in 1878 through regional agents of Boyd's Galvanic Battery Co. However, in New York Supreme Court proceedings, Boyd himself testified that he was unaware who had invented the medallion, and that the Galvanic battery business had been purchased and operated by Ellis H. Elias ([/wiki/Ellis\\_H\\_Elias](#)) on his behalf. Further testimonial, given in the same trial by Richard H. Elias, contended that Ellis H. Elias had been in business with George Sagendorph ([/wiki/George\\_Sagendorph](#)) previously, that the business belonged to Ellis H. Elias, and he had simply continued selling Sagendorph's Battery ([/wiki/Sagendorph%27s\\_Battery](#)) under Boyd's name. (All of which is quite contrary to later advertorial claims by Boyd Co. that Sagendorph had swindled the design.)

### Design

The battery itself is approximately 3 centimetres in diameter, and is composed of 12 individual disks of copper, brass, German silver, and nickel, surrounding a central copper rosette, itself with a brass disk plugged into the centre, all of which is encircled by a brass ring.

### Effects

According to the advertising copy, a Boyd's Battery acts according to the principles of Galvanism, whereby "the union of two or more metals" (through Galvanic corrosion) produces electricity. In the case of Boyd's Battery, the electrolyte is said to be the "natural humidity of the skin", which in reacting with the different metals of the medallion produces a "constant but gentle flow of electricity."

Among other afflictions, a Boyd's Battery was recommended to those subject to any of the following symptoms: "Restless Nights, Nightmare, Palpitation of the Heart, Loss of Confidence, Dizziness, Fainting Spells, Loss of Memory, Fullness of Blood, Fits of Melancholy, Debilitated, Lack of Power of Will and Action, Disordered Condition of the Liver, Blood, Kidneys, or Urinary Organs". It was proposed that "these troubles arise mostly from relaxation or debility, for the relief of which electricity is eminently adapted."

### 1878 Boyd's Quack Battery Cure & Ad Card#4

This is the rare and famous Boyd's Battery Pendant, consisting of a series of discs made of copper, brass, nickel & other metals that claimed with the electrical positive & negative charges will cure all diseases. Included is a seldom found trade card that Boyd used to advertise his quack device. This is an original advertising card, (Not a reproduction). The battery was to be worn around the neck to cure nearly all diseases, especially various rheumatic conditions. J.C. Boyd of New York patented his device in London on January 17, 1878. Dr. Boyd's 1878 advertised claim was "The Blood is the Life. An astounding discovery", "Accomplished at Last, The efficiency of electricity", "For all diseases wear the Battery around the neck". He once published an inch-thick book on his galvanic battery made up entirely of testimonials. Condition: very good. Size: 1 1/4 inch in diameter. Original Advertisement Card is 4" x 3". This is a rare treasure that will highlight any collection of old medical equipment of 125+ years ago.



Quack Medical Device or a True Cure?

The 1870s and 1880s saw a new medical device that promised wonderful cures for almost anything that ailed you. This was just before the electrical revolution that began in the 1880s to 1890s when the new "wonder product" electricity was being applied to everything.

The most famous of the medical batteries was the Boyds Battery. They are fairly easy to find and they polish up nicely. They were made with different metals that promised to create a healing electrical current when pressed against your skin. The galvanic properties were released by the different metals reacting to the moisture in your skin. Some people claimed that they tingled as they worked to draw out the bad energies from your body and replace them with good energy.

Boyds Battery came out in 1878 and was "improved" in 1879. He writes in his book "Boyds Battery", that two of his employees stole his idea and created the Sagendorph Battery which was a direct knockoff of Boyd's design. Boyd claimed that their battery was just a combination of metals that did not do anything as opposed to his battery that was a combination of metals that did cure ills.

Whatever the truth, others followed and produced their own batteries - Richardson and Downing were two that I have found. There were also magnetic belts, shoe inserts, and other products that used either magnetism or batteries to provide some relief to your ills.



(/wiki/Category:Medical\_Medallions)

THE  
MAGNETIC HEALING  
Dr. J. E. BRIGGS,  
M.D.  
No. 24 East 4th Street,  
P. O. Box 98, Station 15, NEW YORK

DR. BRIGGS IS A PRACTICAL PHYSICIAN; HAS  
ALSO THE  
**Gift of Magnetic Healing,**  
which he has practiced successfully for many  
years.

MR. ANDREW JACKSON DAVIS SAYS:  
Dr. J. E. Briggs is an eminent Physician,  
I have fully tested the magnetic healing power  
of the Doctor, and can truthfully say that  
I know by personal experience, it is perfectly  
curative.

BENJ. SCHEMME, Esq., Firm of Scheffer Bros,  
Iron Foundry, P.O., of Troy, N. Y., SAYS:  
I have unhesitatingly known Dr. J. E. Briggs  
for many years, and do not hesitate to recom-  
mend him as a Magnetic Healer, I consider him  
A No. 1.

REV. WILLIAM BRENDON, 6 Sixth Street, Troy,  
N. Y., SAYS:

REMOVED TO  
No. 121 West  
ELEVENTH STREET.



For all diseases, wear the Battery around the neck as represented in this cut.





**BOYD'S MINIATURE GALVANIC BATTERY,**

*For the effectual cure of nearly all diseases.*

*Having very many inquiries for Illuminated Cards, I have concluded to present my patrons with a series of Cards, illustrating the eventful history of "Our Baby," complete in six Cards.*

*Those purchasing my goods will receive the remaining five, free by mail, on receipt of their order for one or more Batteries.*

*Price of Battery 50 cents each, or 3 for one dollar. Remit by mail. Agents Wanted. Address,*

**J. C. BOYD,**

**208 West 49th St., New York City.**

**When you order send the number of this card and you will receive the five remaining numbers.**

**No. E.**

## Check - Hensman Cycle Works And Stand. Christchurch New Zealand - Token Circa 1910

Reg. No: TMR - H32

### Summary:

New Zealand

Value: No value (AD)

Mint: Not recorded.

**Discipline:** Numismatics

**Hensman Cycle Works and Stand  
I Accept No  
Responsibility Although Every  
Precaution  
Is Taken**

### More information

**Tagged with:** Tokens / Checks

**Themes this item is  
part of:** Numismatics & Philately  
Collection

**Primary Classification:** Tokens

### Checks, Discount, & Special Purpose Tokens - General

Sale NZ1 11-15 Sep 2023 Noble Numismatics Sydney Prev Next

[Enlarge](#)



Lot 4691 [SESSION 17 \(9.30AM FRIDAY 15TH SEPTEMBER\)](#) [Checks, Discount, & Special Purpose Tokens - General](#) Is

**HENSMAN CYCLE WORKS AND STAND (CHRISTCHURCH), c1910,** Estimate **\$500**  
 uniface, struck in brass (31mm), no maker, pierced at top for suspension Bid at [live.noble.com.au](http://live.noble.com.au)  
 (G.28a; TMR.-). *Toned, fine and very rare.*



1422

**Check - Security \* Cycle \* Stand \* Christchurch**  
**New Zealand - Token Circa 1913's**

Reg. No: TMR - S39

---

**Summary:**

New Zealand  
Shilling (AD)  
Mint: Not known

**Discipline:** Numismatics

---

**More information**

**Tagged with:** Tokens / Checks

**Themes this item is part of:** Numismatics & Philately Collection

**Primary Classification:** Tokens

**Secondary Classification:** New Zealand

**Tertiary Classification:** Checks

**Denomination:** No value

**Inscriptions:** (Edge) Plain  
(Obverse) Security \* Cycle \* Stand \* / 100  
(Reverse) Blank

**Shape:** Round

**Size:** 25 mm

**Material:** Brass

**Weight:** ?? grams

**Issued By:** Security Cycle Stand.  
Worcester Street, Christchurch





## Advertisements

## Column 5

STAR (CHRISTCHURCH), ISSUE  
10920, 8 NOVEMBER 1913, PAGE 5

Cycle Stand, Worcester Street, opposite Government Buildings.

**WANTED**, Man Fall and Remove two Peach Trees. Apply Monday, 38, Lattimer Square. 3529

**WANTED**, Linwood People save tram fares—Leave their Cycles at Security Cycle Stand, Worcester Street, opposite Government Buildings.

**WANTED**, Linwood People save tram fares—Leave their Cycles at Security Cycle Stand, Worcester Street, opposite Government Buildings.

**WANTED** Known—You are in Town, so call at Oak Hall, the house for original Furniture. 115, Worcester Street. Terms.

**WANTED**, Linwood People save tram fares—Leave their Cycles at Security Cycle Stand, Worcester Street, opposite Government Buildings.

**WANTED**, Some Kind Person to adopt Baby from birth. K.C.C., "Times" Office. 3549

**WANTED**, Linwood People save tram fares—Leave their Cycles at Security Cycle Stand, Worcester Street, opposite Government Buildings.

**WANTED** by Respectable Middle-aged Woman, position as Working Housekeeper; references. N.E.E., "Star" Office.

**WANTED**, Linwood People save tram fares—Leave their Cycles at Security Cycle Stand, Worcester Street, opposite Government Buildings.

**WANTED**, Linwood People save tram fares—Leave their Cycles at Security Cycle Stand, Worcester Street, opposite Government Buildings.

**YOU** can save money by Buying your Footwear from Mills's "All Leather" Shoe Store. Only address, 168, Armagh Street. 3552

**LADIES'** Smart Derby Shoes, latest shapes, from 9s 9d. Mills's "All Leather" Shoe Store, only address, 168, Armagh Street. 3552

**CARPETS**—Special Shipment Hearthrugs and Squares, wholesale prices. Fleming and Sons, 48, Manchester Street. 3549

**LADIES'** Smart Derby Shoes, latest shapes, from 9s 9d. Mills's "All Leather" Shoe Store, only address, 168, Armagh Street. 3552

**WANTED**, Linwood People save tram fares—Leave their Cycles at Security Cycle Stand, Worcester Street, opposite Government Buildings.

**BOOTS** for the Boys.—Get them at Mills's "All Leather" Shoe Store. Only address, 168, Armagh Street. 3552

**WANTED**, Linwood People save tram fares—Leave their Cycles at Security Cycle Stand, Worcester Street, opposite Government Buildings.

**MADE** of the Best to Stand the Test: Boots from Mills's "All Leather" Shoe Store. Only address, 168, Armagh Street.

**CARPETS**—Special Shipment Hearthrugs and Squares, wholesale prices. Fleming and Sons, 48, Manchester Street. 3549

**CHILDREN'S** Boots from 3s 11d. sizes 7 to 10, at Mills's "All Leather" Shoe Store. Only address, 168, Armagh Street.

**WANTED**, Linwood People save tram fares—Leave their Cycles at Security Cycle Stand, Worcester Street, opposite Government Buildings.

**MADE** of the Best to Stand the Test: Boots from Mills's "All Leather" Shoe Store. Only address, 168, Armagh Street.

**CHILDREN'S** Boots from 3s 11d. sizes 7 to 10, at Mills's "All Leather" Shoe Store. Only address, 168, Armagh Street.

**ERNEST JONES**, Hairdresser, Tobacconist, Chancery Lane. Open all day Thursdays.

**CHANCERY** Lane Hairdresser, Tobacconist—Open all day on Thursday and close Saturday, 1 p.m. 3549

**WANTED**, Linwood People save tram fares—Leave their Cycles at Security Cycle Stand, Worcester Street, opposite Government Buildings.

**MEN'S** Smart Boots for best or everyday wear. At Mills's "All Leather" Shoe Store. Only address, 168, Armagh Street. 3552

**WANTED**, by Experienced Driver, a Mill for the season. Apply L.F.F., "Star."

**WANTED**, Linwood People save tram fares—Leave their Cycles at Security Cycle Stand, Worcester Street, opposite Government Buildings.

**WANTED**, Job on Sheep Farm by a Boy of 15. Apply J.F.F., "Star." 3545



1424

## Check - Timaru Boy's High School New Zealand - Token Circa

Reg. No: TMR-T57

### Summary:

New Zealand

Penny(AD)

Mint: not recorded.

**Discipline:** Numismatics

---

### More information

**Tagged with:** Sports/ Tokens

**Themes this item is part of:** Numismatics & Philately Collection

**Primary Classification:** Tokens

**Secondary Classification:** New Zealand

**Tertiary Classification:** Checks

**Denomination:** No Value

**Inscriptions:** (Edge) Plain  
(Obverse) Timaru Boys High School / Scientia Potestas Est / \*  
(Reverse) V . M c K. / SP. BD. Dive

**Shape:** Round

**Size:** 25.9 mm- 30.0 mm Loop

**Material:** Bronze

**Weight:** 8.9 grams ??

**Issued By:** Timaru Boys High School  
North Street, Timaru



Coordinates: 44.3997°S 171.2302°E﻿ / ﻿44.3997°S 171.2302°E﻿ / -44.3997; 171.2302﻿ (-44.3997; 171.2302)

**Timaru Boys' High School** (also known as **TBHS**), established in 1880, is a single sex state (public) secondary school located in the port city of Timaru, South Canterbury, New Zealand. TBHS caters for years 9 to 13 (ages 12 to 19 years).

At the beginning of the 2017 school year, the school had more than 650 students.

## Traditions

There are four houses, each named after a former rector and led by a house captain. Every one in the school competes in inter-house programs to earn points for their house. These include cross country, athletics, swimming sports, singing, volleyball, basketball and quadball tournaments. The houses compete annually for the Cleland Cup.

Timaru Boys' house names and their colours

<b>Dawson</b>	Named after L Halket-Dawson, rector 1880–1887
<b>Hogben</b>	Named after George Hogben, rector 1888–1898
<b>Simmers</b>	Named after George A Simmers, rector 1899–1912
<b>Tait</b>	Named after Alan G Tait, rector 1935–1947

## Thomas House boarding hostel

The Thomas House boarding hostel is attached to and is an integral part of the school. Built in 1907, Thomas House, named after the school's first rector, welcomed in its first eight boarders in 1908. In 2010 it held just over 80 boarders; by 2017, Thomas House reached capacity with 119 boarders. Thomas House has several wings. The Fraser Wing from 1962 is named after Hanson Fraser, who chaired the board of governors for two decades. The Jubilee Wing from 1984 commemorates the 75th jubilee of the boarding hostel. The Manning Wing commemorates several members of the Manning family who worked at the boarding hostel. The Lindsay Wing commemorates two cousins of the same name who both represented New Zealand internationally in 1928: David Lindsay went to the Olympics as a swimmer and Dave Lindsay was a member of the 1928 New Zealand rugby union tour of South Africa.

The medal was awarded to "Victor Blackmore McKeague" (1910 - 99) He attended TBHS from 1923 to 1925

The school magazine confirms that he won the springboard dive at the 1923 swimming sports.

Medals/ medallions were later replaced by cups and trophies.

Timaru Boys' High School



Timaru Boys' High School entrance



1426

## Check - One World Of Sport. Celebrity SpooF New Zealand - Token                      Circa

Reg. No: TMR - O29

---

**Summary:**

New Zealand

Value: No value

Mint: Not recorded.

**Discipline:** Numismatics

---

**More information**

**Tagged with:** Sports / tokens

**Themes this item is part of:** Numismatics & Philately Collection

**Primary Classification:** Tokens

**Secondary Classification:** New Zealand

**Tertiary Classification:** Checks

**Denomination:** No value

**Inscriptions:** (Edge) Plain  
(Obverse) \* One World Of Sport\* / Kiwi / One Dollar / Celebrity SpooF

(Reverse) ONE / SPORT

**Shape:** Round

**Size:** 25.57 mm - 25.47 mm

**Material:** Nickel finish

**Weight:** 8.9 grams

**Issued By:** No records found.. Maybe T.V.???



## Check - Samuel Kingdon, Notary Public Nelson N.Z. New Zealand - Token Circa 1860's to early 1870's ??

Reg. No: TMR-S40

### Summary:

New Zealand

No value (AD)

Mint: Not known

**Discipline:** Numismatics

### More information

<b>Tagged with:</b>	Token
<b>Themes this item is part of:</b>	Numismatics & Philately Collection
<b>Primary Classification:</b>	Tokens
<b>Secondary Classification:</b>	New Zealand
<b>Tertiary Classification:</b>	Checks
<b>Denomination:</b>	No value
<b>Inscriptions:</b>	(Edge) Plain (Obverse) Samuel Kingdon, / Notary Public / Nelson. N.Z. Double headed eagle center. (Reverse) Blank
<b>Shape:</b>	Round
<b>Size:</b>	41 mm
<b>Material:</b>	Lead, Copper Coating
<b>Weight:</b>	?? grams
<b>Issued By:</b>	Samuel Kingdon Nelson, N.Z.





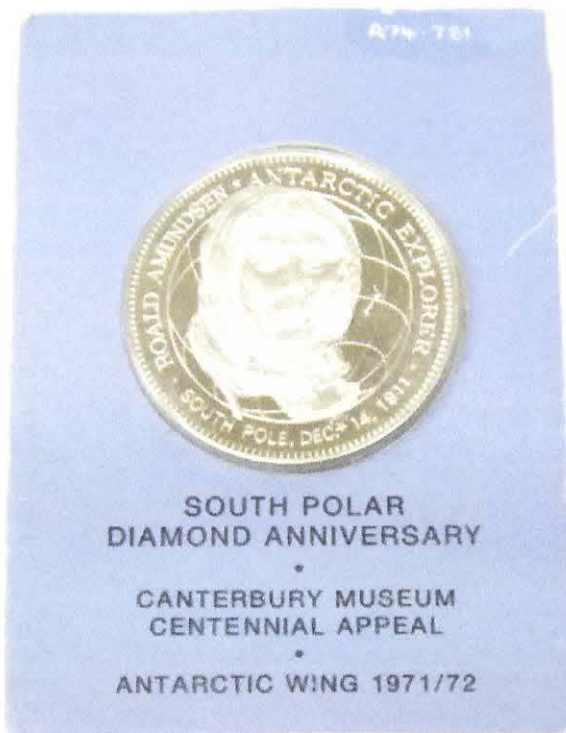
## Medal, South Polar Diamond Anniversary

### Production date

1971

### Description

A South Polar Diamond Anniversary Medal. The cupro nickel medal features Roald Amundsen on the obverse. " ROALD AMUNDSEN ANTARCTIC EXPLORER SOUTH POLE DEC 14,1911 " is marked around the edges of this. The reverse features Robert Falcon Scott standing on the ice. " ROBERT F. SCOTT SOUT POLE JAN 18 1912 " is marked around this. The medal is sealed in a light blue cardboard mount. " SOUTH POLAR / DIAMOND ANNIVERSARY / CANTERBURY MUSEUM / CENTENNIAL APPEAL / ANTARCTIC WING 1971/72 " is marked on the mount.



Museum, New Zealand - South Polar Diamond Anniversary - Canterbury Museum Centennial Commemorative - 39 mm in Diameter- The Franklin Mint

## Medal, South Polar Diamond Anniversary

### Production date

1971

### Description

A South Polar Diamond Anniversary Medal. The cupro nickel medal features Roald Amundsen on the obverse. " ROALD AMUNDSEN ANTARCTIC EXPLORER SOUTH POLE DEC 14,1911 " is marked around the edges of this. The reverse features Robert Falcon Scott standing on the ice. " ROBERT F. SCOTT SOUT POLE JAN 18 1912 " is marked around this. The medal is sealed in a light blue cardboard mount. " SOUTH POLAR / DIAMOND ANNIVERSARY / CANTERBURY MUSEUM / CENTENNIAL APPEAL / ANTARCTIC WING 1971/72 " is marked on the mount.



SOUTH POLAR SILVER COIN 1972 AMUNDSEN SCOTT  WorthPoint



Solid Sterling Silver Coin/Medal - Canterbury Museum, New Zealand - South Polar Diamond Anniversary - Canterbury Museum Centennial Commemorative - 39 mm in Diameter- The Franklin Mint

Solid Sterling Silver Coin/Medal - Canterbury Museum, New Zealand - South Polar Diamond Anniversary - Canterbury Museum Centennial Commemorative - 39 mm in Diameter- The Franklin Mint





# Check -TROOPSHIP, No 5 NZ Souvenir New Zealand - Token Circa 1914

Reg. No: TMR - T32 +1 There could be two materials of this token.???

---

## Summary:

New Zealand  
Penny(AD) No value  
Mint: not recorded

**Discipline:** Numismatics

---

## More information

**Tagged with:** Token

**Themes this item is part of:** Numismatics & Philately Collection

**Primary Classification:** Tokens

**Secondary Classification:** New Zealand

**Tertiary Classification:** Checks

**Denomination:** No value

**Inscriptions:** (Edge) Plain  
(Obverse) Souvenir / Troopship / No 5 / N.Z. / 1914  
(Reverse) Blank

**Shape:** Round

**Size:** 22.00 mm

**Material:** Copper

**Weight:** 4.33 grams

**Issued By:** New Zealand War Department  
Wellington



# Check - AA N.Z. AUTOMOBILE ASSOCIATION New Zealand - Token Circa 1930's

Reg. No.

Token was purchased in ChristChurch 2021

## Summary:

New Zealand

Value: No denomination (AD)

Mint: Not recorded.

**Discipline:** Numismatics

---

## More information

**Tagged with:** Tokens

**Themes this item is part of:** Numismatics & Philately Collection

**Primary Classification:** Tokens

**Secondary Classification:** New Zealand

**Tertiary Classification:** Checks

**Denomination:** No value

**Inscriptions:** (Edge) Plain  
(Obverse) A A  
(Reverse) 1

**Shape:** Round

**Size:** ??mm

**Material:** White Metal

**Weight:** ?? grams

**Issued By:** A A Auckland  
MAYBE NOTHING TO DO WITH N.Z.





# New Zealand Automobile Association

---

The AA is also an advocate for creating a better and safer driving environment for New Zealanders. It has been supporting kiwi drivers since 1903 making it the largest and oldest motoring club in New Zealand.



AA Otago 1924

## History

---

In May 1903, Dr George Thomas Humphrey de Clive-Lowe invited about 20 new motoring enthusiasts to consider his germ of an idea to start an automobile club. First in Auckland, followed by Canterbury a few months later, motoring clubs began to dot the country with at least 15 different automobile associations registered by 1930. During the 1980s, 17 district automobile associations began to merge to form the New Zealand Automobile Association and became the country's largest club. The final merger was achieved in 1991 under the leadership of the present Chief Executive, Brian Gibbons. Products and services diversified through new joint venture companies, franchise operations and business partnerships during the 1990s.

### RE: Atten Travis Old token

---

Dear Terry,

From: "AA Online" <Online@aa.co.nz>

To: "aoraki@bresnan.net" <aoraki@bresnan.net>

Cc:

Date: Wednesday October 2 2019 8:31:09PM

Thank you for your reply and sending in the photo. Prior to the 1980's New Zealand had many AA's in different districts. It's possible that this token was done by an independent district but unfortunately we don't have any information to confirm this was the case. I can advise that the AA car badges had different styles throughout the years which none match or are similar to the photo you provided. The AA also had a number of lapel badges but again none that match what you have.

Sorry that we are unable to assist you with your query and best of luck in your endeavours.

Kind Regards

Travis

# Check - Mundus Numisma

## New Zealand - Token      Circa 1977 (founded in 1963)

Reg. No: TMR - M45

---

### Summary:

New Zealand

Value: No denomination, or value (AD)

Mint: not recorded.

**Discipline:** Numismatics

---

### More information

**Tagged with:** Convention Tokens

**Themes this item is part of:** Numismatics & Philately  
Collection

**Primary Classification:** Tokens

**Secondary Classification:** New Zealand

**Tertiary Classification:** Checks

**Denomination:** No value

**Inscriptions:** (Edge) Plain  
(Obverse) Australia / Map / New Zealand / Two flags / 1977  
(Reverse) Convention of / International Numismatic / 3 Stars / Mundus / Numisma / 3 Stars

**Shape:** Round

**Size:** 38.94 mm - 38.97 mm

**Material:** Brass

**Weight:** 19.3 grams

**Issued By:** International Numismatics  
Australia and New Zealand

