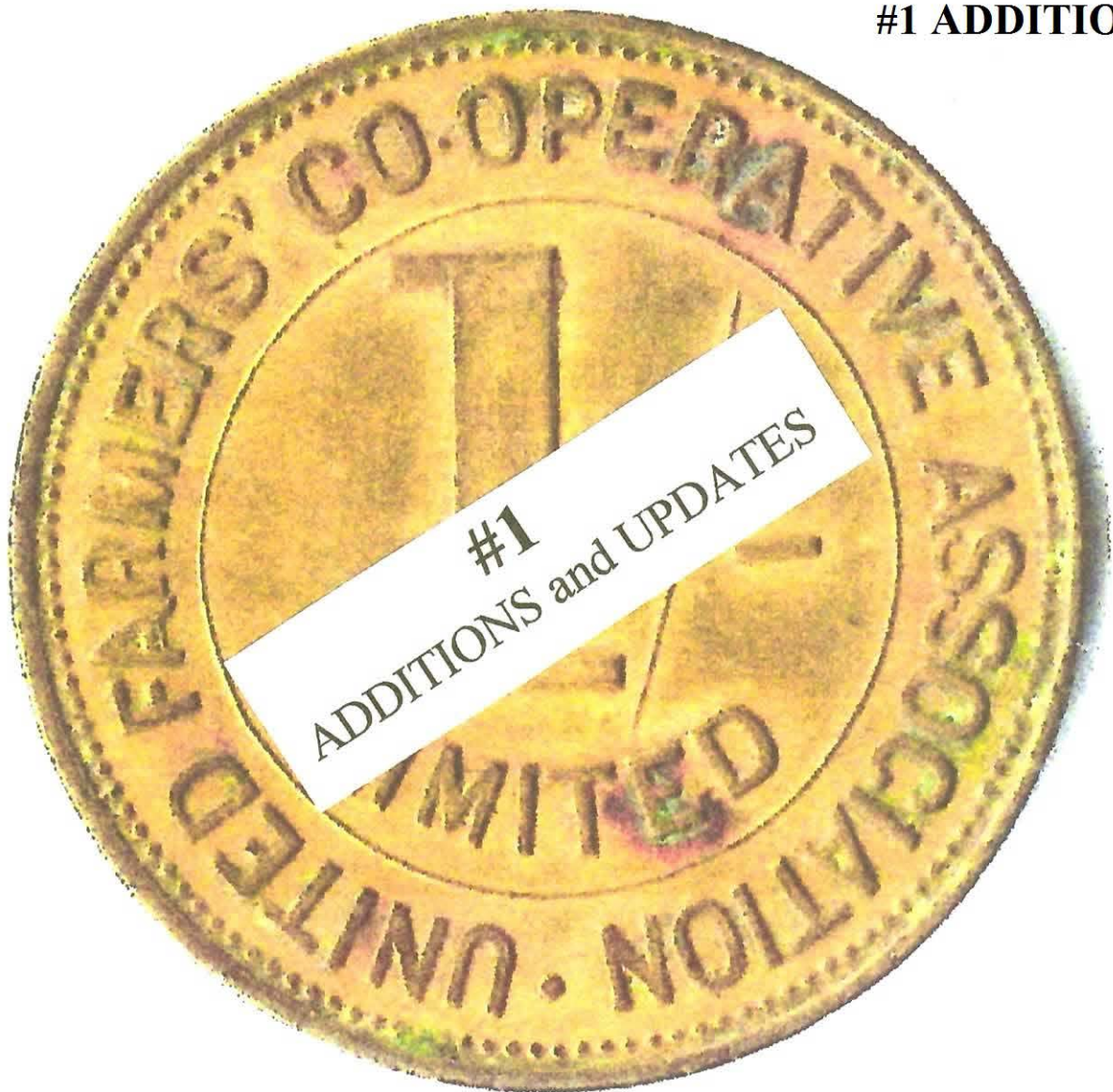


NEW ZEALAND

Checks, Discount & Special Purpose Tokens

PART FIVE

#1 ADDITIONS



Terence M. Roker

This manuscript is unpublished.

No permission has been sought from copyright holders for the reproduction of any of the photographs or illustrations which have been used throughout this manuscript.

This copy has been printed by the author for no financial gain whatsoever, with the intention that it is to be used for research purposes only.

The author wishes to disclaim any responsibility for any person who subsequently makes copies of this manuscript and uses them in such a way that violates copyright law.

Check - American Airlines, DFW–Auckland Inaugural New Zealand - Token Circa 1990

Reg. No: TMR - A29

Summary:

New Zealand

Value: No denomination (AD)

Mint: Not recorded.

Discipline: Numismatics

More information

Tagged with: Tokens / Medallion

Themes this item is part of: Numismatics & Philately Collection

Primary Classification: Tokens

Secondary Classification: New Zealand

Tertiary Classification: Checks

Denomination: No value

Inscriptions: (Edge) Plain
(Obverse) A (logo) A / American Airlines
(Reverse) Inauguration Of / American Airlines' / Inaugural flight to / Auckland. / February 06, 1990. / "Something Special / in the Air"

Shape: Round

Size: 46.42 mm----46.31 mm

Material: Brass

Weight: 44.9 grams

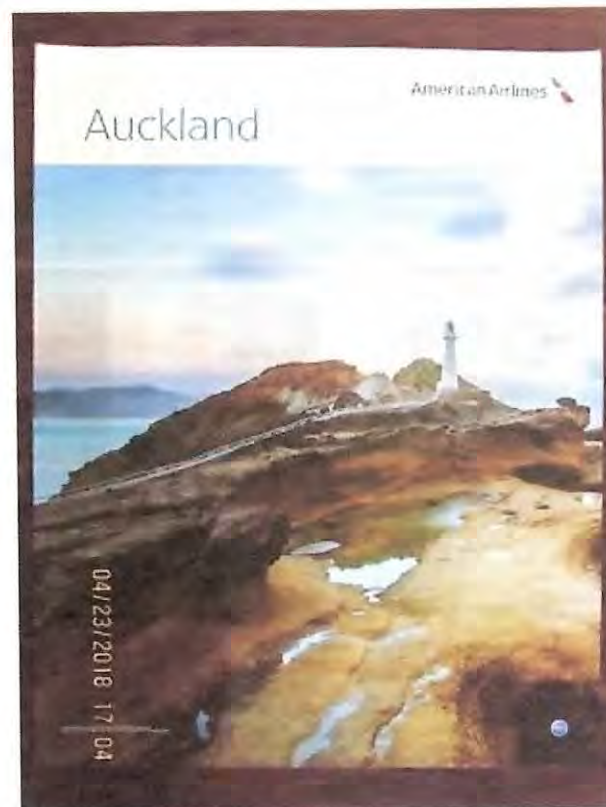
Issued By: American Airlines
DFW



AMERICAN AIRLINES -----AUCKLAND 1990

American Airlines DFW –Auckland Inaugural Flight Token/Medallion 1990

American Airlines, briefly flew between, Dallas/Fort Worth and Auckland, with a stop in Honolulu, starting in 1990 but ended service in 1991.



Check - AUCKLAND COIN CLUB.**New Zealand - Token Circa 1966**

Reg. No: TMR - A30

Summary:

New Zealand

Value: No value (AD)

Mint: Not recorded.

Discipline: Numismatics**More information****Tagged with:** Token**Themes this item is part of:** Numismatics & Philately**Primary Classification:** Tokens**Secondary Classification:** New Zealand**Tertiary Classification:** Checks**Denomination:** No value**Inscriptions:** (Edge) Plain
(Obverse) The* Auckland Coin* Club*1966 / (Southern Cross & N.Z.)
(Reverse) Founded 17th January 1966 / (One tree Hill) / A.C.C.**Shape:** Round**Size:** 38 mm**Material:** Copper,
Also-Aluminium,Gold, Silver**Weight:** grams**Issued By:** AUCKLAND COIN CLUB

Check - AUCKLAND ZOOLOGICAL PARK. N.Z. New Zealand - Token Circa 2000 ?

Reg. No: TMR - A32

Summary:

New Zealand
Value: No value (AD)
Mint: Not recorded.

Discipline: Numismatics

More information

Tagged with: Souvenir/Tourist tokens

Themes this item is part of: Numismatics & Philately Collection

Primary Classification: Tokens

Secondary Classification: New Zealand

Tertiary Classification: Checks

Denomination: No value

Inscriptions: (Edge) Plain
(Obverse) Auckland Zoological Park / (picture centre) / New Zealand
(Reverse) New Zealand Tourist Dollar/ Map of NZ

Shape: Round

Size: 30.39 mm

Material: Brass

Weight: 11.7 grams

Issued By:
AUCKLAND ZOOLOGICAL PARK
WESTERN SPRINGS. AUCKLAND



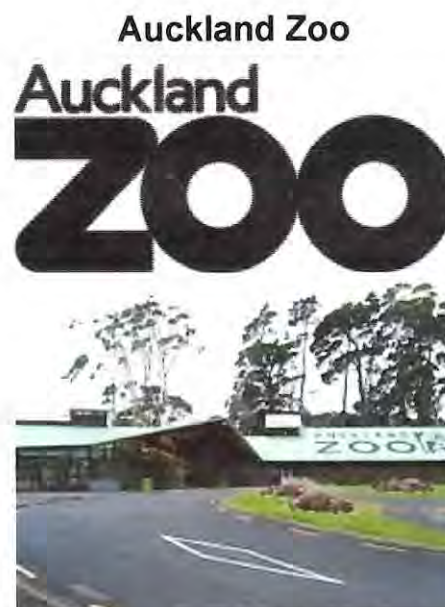
Auckland Zoo

Auckland Zoo is a 16.35-hectare (40-acre) zoological garden in Auckland, New Zealand, situated next to Western Springs park not far from Auckland's central business district. It is run by the Auckland Council with the Zoological Society of Auckland as a supporting organisation.

Auckland Zoo opened in 1922 experiencing early difficulties mainly due to animal health issues. By 1930 a sizeable collection of animals had been assembled and a zoological society formed. The zoo consolidated during the Second World War and was at that time under the leadership of Lt. Col. Sawyer. After the war the collection was expanded, and in the 1950s chimpanzees were acquired to provide tea parties for the public's entertainment, but this practice ceased in 1964. In 1973 the zoo expanded into the adjacent Western Springs park. From the late 1980s to the present day, many old exhibits were phased out and replaced by modern enclosures. In 2011 the zoo opened its largest development, Te Wao Nui, which exhibits native New Zealand flora and fauna.

The zoo is separated loosely into areas defined by the region of origin of the species exhibited, its taxonomy, or by biome. The zoo plays a part in conservation (mainly of New Zealand species), research and education. It has many modern features such as the New Zealand Centre for Conservation Medicine (NZCCM).

Auckland Zoo is a full institutional member of the Zoo and Aquarium Association (ZAA), and received ISO 14001 accreditation for its Environmental Management System in 2007.



Zoo entrance on Motions Road

Date opened	17 December 1922
Location	Western Springs, Auckland, New Zealand
Coordinates	36.86218°S 174.718924°E
Land area	16.35 hectares (40 acres)
No. of animals	1,400+
No. of species	135
Annual visitors	716,327 (Jul 2012 – Jun 2013)
Memberships	ZAA
Major exhibits	Africa, Australia, Sri Lanka, South America, Te Wao Nui, KidZone
Website	www.aucklandzoo.co.nz (http://www.aucklandzoo.co.nz)

Check - GRAND LODGE OF NEW ZEALAND**New Zealand - Token Circa 1880--1900's**

Reg. No: TMR - G7

Summary:

New Zealand

Value: Penny (AD)

Mint: Hamburg State Mint

BRO&C-C-WIEBE HAMBURG

Discipline: Numismatics**More information**

Tagged with: Tokens/medal
Themes this item is part of: Numismatics & Philately Collection

Primary Classification: Tokens**Secondary Classification:** New Zealand**Tertiary Classification:** Checks**Denomination:** No value

Inscriptions: (Edge) Plain
 (Obverse) Grand Lodge Of New Zealand / (Crest and Wreath) /
 Antient Free And Accepted Masons
 (Reverse) 1890-1900 In Commemoration Of Ten Years Successful
 Masonic Work / Advance New Zealand / (Around a Shield)

Shape: Round**Size:** 36 mm**Material:** Bronze**Weight:** W?? grams**Issued By:** Grand Lodge Of New Zealand
Wellington

History

The precise origins of Freemasonry have been lost in time, however, its traditions date back to the Middle Ages and to the stonemasons who built the cathedrals and castles of Europe.

To construct them, it was necessary for men to have considerable knowledge of geometry, arithmetic and engineering. These highly skilled masons formed themselves into lodges to protect the skills and secrets of their trade and to pass their knowledge on to worthy apprentices. *Importantly, these men were not bondsmen, hence the word "free" in Freemason.*

By the 17th Century, when the building of castles and cathedrals diminished, Masonry began to lose its 'operative' aspects and worthy men who were not craftsmen were also accepted into its membership. It was from this time that Masons were known as 'free and accepted' Masons, as they continue to be known to this day.

The first Grand Lodge was established in England in 1717 and thereafter Freemasonry spread rapidly throughout the world. Freemasonry has been practiced in Australasia since early in the 19th Century.

The Grand Lodge of Antient, Free and Accepted Masons of New Zealand (Freemasons New Zealand) was constituted in April 1890 but Freemasonry has been in New Zealand since the early 1800's under the banners of the English, Irish and Scottish Constitutions. The first Masonic meeting in New Zealand was held in 1837 and the first Lodge founded in 1842. It currently has a membership of 5765 Freemasons formed into 215 Lodges throughout New Zealand. There are over five million Freemasons throughout the world.

* Past Rank

1890-91 Henry THOMSON (d)

1892-93 Malcolm NICCOL (d)

1894 Edward Thomas GILLON (d)*

1894-95 Rt Hon. Sir Francis H D BELL, GCMG, KC, MLC (d)

1896-97 William BARRON (d)

1898-99 Rt Hon. Richard John SEDDON (d)

***** 1900 Carl WEIBE (d)* *****

1900-01 Alexander Stuart RUSSELL (d)

1902-03 Herbert James WILLIAMS (d)

1904-05 Alfred Henry BURTON (d)

Medallion d. = 36 mm.

This rare early New Zealand Freemasonry commemorative medal was struck at the Hamburg State mint, and edited by

Wiebe, Carl Cornelius, Grand Master of the Grand Lodge of New Zealand 1900, Grand Master of the Grand Lodge of Hamburg, 1850 - 1910 Hamburg, G

Carl Cornelius Wiebe of the Grand Lodge of Hamburg, Germany, was Grand master of the Grand Lodge in Wellington 1900 when the NZ Freemasons celebrated their 10th anniversary.

In shield of arms: "ADVANCE NEW ZEALAND", on banderole below: "AUDI VIDE TACE".

Curved below: "PRESENTED BY BRO C.C. WIEBE HAMBURG, P.G.M. NEW ZEALAND".

Surrounding: "1890 - 1900 IN COMMEMORATION OF TEN YEARS SUCCESSFUL MASONIC WORK"/ The arms of the NZ freemasons, surrounding: "** GRAND LODGE OF NEW ZEALAND

* ANTIENT FREE AND ACCEPTED MASONS **". Not in Morel.



Hi there. I thought I should just clarify a small error in your description regarding Carl Weibe. He never was an elected and active Grand Master of New Zealand. He got given the rank of Past Grand Master (honoris causa) in recognition for services to the NZ Grand Lodge, in his capacity of Grand Master of Hamburg. Cheers

**Check - NEW ZEALAND CUSTOMS SERVICE.
New Zealand - Token Circa 1996 ? (Unlisted)**

Reg. No: TMR - N75

Summary:

New Zealand
Value: No value (AD)
Mint: Not recorded.

Discipline: Numismatics

More information

Tagged with: Token / Medal

Themes this item is part of: Numismatics & Philately Collection

Primary Classification: Tokens

Secondary Classification: New Zealand

Tertiary Classification: Checks

Denomination: No value

Inscriptions: (Edge) Plain
(Obverse) New Zealand / (Crest and Crown)/ Customs Service
(Reverse) Blank

Shape: Round (Uniface)

Size: 40.60 mm

Material: ????

Weight: 7.38 grams

Issued By: New Zealand



The New Zealand Customs Service (Customs) (In Māori, *Te Mana Ārai o Aotearoa*) is a state sector organisation of New Zealand whose role is to provide border control and protect the community from potential risks arising from international trade and travel, as well as collecting duties and taxes on imports to the country.

History

Customs is the oldest government department in New Zealand. Formed on 5 January 1840, it pre-dates the signing of the Treaty of Waitangi by one month. Its early establishment was necessary to collect revenue for the fledgling government, and over the years duties, tariffs and taxes collected by Customs have remained a major source of revenue for the country, although customs has also been used to impose various control over the movement of people and the distribution of particular products, in particular alcohol and tobacco.

In 1996, the New Zealand Customs Department was renamed the New Zealand Customs Service.

In recent years Customs has modernised itself in order to keep pace with new technologies and the ever-increasing volumes of international passengers and trade, while balancing its law enforcement and compliance obligations. Staffing levels sit between 1300 - 1500 nationally, with its head office located in Wellington. Staff are based at various ports and locations around New Zealand and are a mixture of frontline uniformed staff such as those seen at the airports and sea ports, as well as plainclothes staff in varying other roles.

Responsibilities

Customs is a law enforcement agency in its own right, and is responsible for intercepting contraband, and checks international travelers and their baggage, as well as cargo and mail, for banned or prohibited items. Contrary to popular belief, it is not responsible for biosecurity items such as food and other agricultural items declared at ports of entry - this is the responsibility for the Ministry for Primary Industries. Customs is also responsible for assessing and collecting Customs duties, excise taxes and Goods and Services Tax on imports and protecting New Zealand businesses against illegal trade. It is second only to the Inland Revenue Department for the amount of revenue it collects for the New Zealand Government. It exercises controls over restricted and prohibited imports and exports, including objectionable material (such as child sex abuse images), drugs, firearms and hazardous waste and also collects import and export data.

New Zealand Customs Service Te Mana Ārai O Aotearoa (Māori)



Agency overview

Formed	1840
Employees	Approx 1,300
Annual budget	<i>Vote Customs</i> Total budget for 2019/20 ▼\$241,701,000

Jurisdictional structure

Operations jurisdiction	New Zealand
Governing body	New Zealand Government
Constituting instrument	<ul style="list-style-type: none"> Customs and Excise Act 2018
Headquarters	The Customhouse, 1 Hinemoa St, Harbour Quays, Wellington
Minister responsible	<ul style="list-style-type: none"> Jenny Salesa, Minister of Customs

Facilities

Stations	23
-----------------	----

Website

www.customs.govt.nz
(<https://www.customs.govt.nz/>)

Childrens Souvenir Medalet June 1901.

Check - H.M.S. Ophir NZ Visit 1901 New Zealand - Token Circa 1901

Reg. No: TMR - H19

Summary:

New Zealand
Value: No value (AD)
Mint: Not recorded.

Discipline: Numismatics

More information

Tagged with: Tokens / Souvenir Medalet

Themes this item is part of: Numismatics & Philately Collection

Primary Classification: Tokens

Secondary Classification: New Zealand

Tertiary Classification: Checks

Denomination: No Value

Inscriptions: (Edge) Plain
(Obverse) Children's Souvenir / Visit Duke & Duchess Of Cornwall
To N.Z.
(Reverse) H.M.S.Ophir In Which Their Royal Highnesses Came to N.Z. /
June 1901

Shape: Round

Size: 27 mm (Thickness 1.85 mm)

Material: Copper

Weight: 7.7 grams

Issued By: N.Z Govt.

Features

Country	* Tokens * (New Zealand - Tokens)
Type	Token
Year	1901
Currency	Tokens
Composition	Copper
Weight	7.2 g
Diameter	27 mm
Thickness	1.8 mm
Shape	Round
Orientation	Medal alignment ↑↑



ROYAL VISITS

The Duke and Duchess of Cornwall, 1901

The next Royal occasion was not until 1901 when Prince George Frederick Ernest Albert (1865–1936), Duke of Cornwall and York and second son of Edward VII and Queen Alexandra, arrived with his Duchess. The visit, part of an Empire tour, followed the opening of the Commonwealth Parliament in Australia and was also a tribute to the response made throughout the Empire during the Boer War. The Duke's commission had just been signed when Queen Victoria died; nevertheless it was decided that the tour should still take place.

The Royal couple left England on 16 March 1901 in the *Ophir*, an Orient liner of 6,910 tons specially converted for the purpose. It had a naval escort. They arrived at Auckland on 11 June, 24 hours ahead of schedule, the landing being delayed until the set time the following day.

The Duke and Duchess remained at Auckland until 13 June, and during this time laid the foundation stone of Queen Victoria High School for Girls. They also received from Sir John Logan Campbell the deeds of Cornwall Park, a gift to the people of New Zealand. Two days were spent at Rotorua, but a notable absentee from Maori receptions was the "Maori King" (*q.v.*). From Rotorua the party returned to Auckland to rejoin *Ophir* bound for Wellington. In Wellington foundation stones of the Town Hall and new Government railway offices were laid before the ship sailed on 21 June for Lyttelton. The Duke and Duchess stayed at Christchurch until 25 June when they travelled by rail to Dunedin. They returned to Lyttelton by the same route to sail for Tasmania on 27 June. Dunedin excelled itself with an elaborate series of decorations – with evergreen garlands, coloured drapings, and a line of Venetian masts. There were a number of special arches, including a Government and a City and Suburban arch, and the novel Chinese arch. At night the Octagon was a "scene of great beauty" with illuminated decorations, and fireworks were also a feature of the evening celebrations.

On their return to Britain the couple were proclaimed Prince and Princess of Wales and, on the death of Edward VII in 1910, became George V and Queen Mary.

N.Z DUKE AND DUCHESS OF CORNWALL AND YORK VISIT 1901 MEDALLION



Size 25 mm approx

Metal; White metal.

R4 in Morel so Scarce.



Check - H.M.S. Ophir NZ Visit 1901 New Zealand - Token Circa 1901

Reg. No: TMR - H20

Summary:

New Zealand

Value: No value (AD)

Mint: Not recorded.

Discipline: Numismatics

More information

Tagged with: Tokens / Souvenir Medalet

Themes this item is part of: Numismatics & Philately Collection

Primary Classification: Tokens

Secondary Classification: New Zealand

Tertiary Classification: Checks

Denomination: No Value

Inscriptions: (Edge) Plain
(Obverse) H.M.S. Ophir In Which Their Royal Highnesses Came To
N.Z. / **June 1901**
(Reverse) Children's Souvenir / Visit Duke & Duchess Of Cornwall To
N.Z.

Shape: Round

Size: 27.52-27.48 mm (2.4 mm Thick)

Material: Copper

Weight: 9.9 grams

Issued By: N.Z Govt.



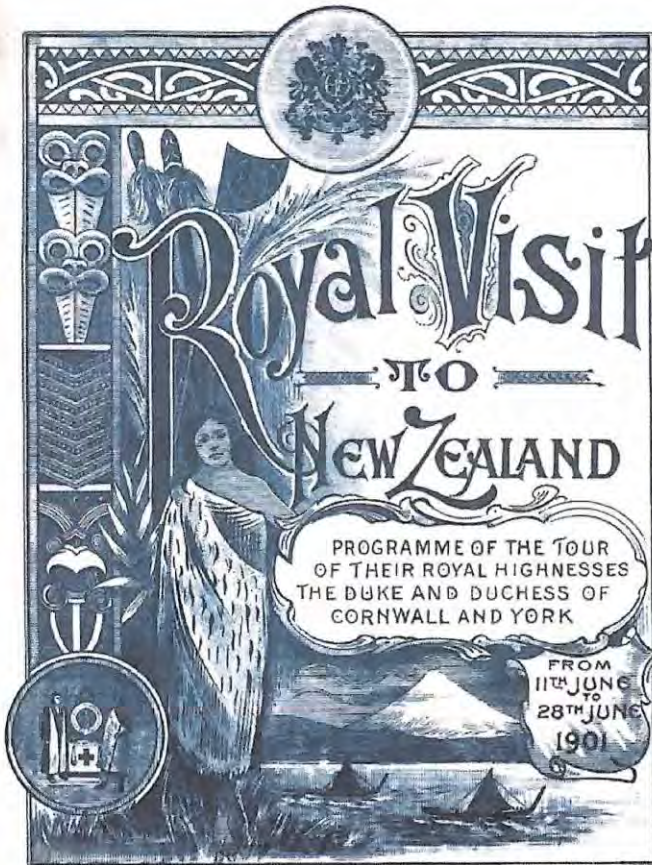
The **Royal Trains** were special train carriages used by New Zealand Railways during royal visits to New Zealand, which occurred in 1901, 1920, 1927, 1935 and 1954. Each Royal Train was preceded by a pilot train, a similar arrangement to that used in Britain.



Exterior view of the Royal Train carriage, used during the Duke of Cornwall and York's 1901 visit

The Duke and Duchess of Cornwall, 1901

The train was built and used for the visit of Prince George Frederick Ernest Albert (George V) (1865–1936) and his Duchess, who travelled on 25 June 1901 by rail from Christchurch to Dunedin. They then returned to Lyttelton via the same route before embarking for Tasmania on 27 June 1901 on HMS Ophir, a purposely converted ocean liner of the Orient Line.



Check -Chips A Wellington Night Club New Zealand - Token Circa 1980's

Reg. No: TMR - C53

Summary:

New Zealand

Value: Cost of a Drink (Upon Arrival)

Mint: Not recorded.

Discipline: Numismatics

More information

Tagged with: Tokens

Themes this item is part of: Numismatics & Philately Collection

Primary Classification: Tokens

Secondary Classification: New Zealand

Tertiary Classification: Checks

Denomination: No Value

Inscriptions: (Edge) Plain
(Obverse) Chips.
(Reverse) Chips

Shape: Round (Very Black)

Size: 38.98 mm—38.91 mm

Material: Plastic

Weight: 4.5 grams

Issued By: CHIPS
Wellington





Chips nightclub operated in the early 1980's in Wellington scene.

Frankie Stevens – future NZ Idol judge, managed (or partially owned) Chips for the bulk of its existence.

Chips survived against the odds for a full decade, if not actually a little longer. It had its own regulars, and there was that novel thing with the drinks; you bought chips upon arrival and used them as drink tokens as the night progressed.

This is one such original drink token. Unfortunately as the token is black it doesn't show up too well in the photo.

Live from Chips

Television, 1981

[Overview](#) [Credits](#)

At a time when TVNZ light entertainment inevitably meant major studio productions complete with dancing girls, *Live from Chips* presented singers in a live, no frills environment freed from big budget distractions. The venue was Wellington nightclub Chips and each episode focussed on one singer and backing band playing a 25 minute set. Four episodes were made featuring artists from outside the pop/rock orbits of *Ready to Roll* and *Radio with Pictures* — Tina Cross, Herb McQuay, Frankie Stevens and Mark Williams (flown in from Sydney to do the show).

Check - Rex Porter Memorial Rally, VCC Wairarapa New Zealand - Token Circa 2000's

Reg. No: TMR - R34

Summary:

New Zealand
No denomination (AD)
Mint: not recorded.

Discipline: Numismatics

More information

Tagged with: Rally Token

Themes this item is part of: Numismatics & Philately Collection

Primary Classification: Tokens

Secondary Classification: New Zealand

Tertiary Classification: Checks

Denomination: No value

Inscriptions: (Edge) Plain
(Obverse) Rex Porter Memorial Rally / (old car) / V.C.C. Wairarapa
(Reverse) Blank

Shape: Round (unface)

Size: 42 mm

Material: Copper silver plated ?

Weight: 23.88 grams

Issued By: Rally Committee
Wairarapa



New Zealand
Commemorative Medal
2003 Rex Porter Memorial Rally - VCC Wairarapa
Blank back
Date punched by hand



New Zealand
Commemorative Medal
2004 Rex Porter Memorial Rally -
Blank back
Date punched by hand

0.90 Silver (not hallmarked but electronically tests as such)

Wairarapa VCC

**VINTAGE CAR CLUB OF NEW ZEALAND (INC)
~ WAIRARAPA BRANCH ~**

REX PORTER MEMORIAL RALLY



*** REX PORTER***

The late Rex Porter, foundation member and past president of the Wairarapa Branch, joined the Vintage Car Club of NZ (INC) in 1955 as a member of the Wanganui Branch, being the nearest to Wairarapa in those days. It is to this pioneer motorist, Veteran enthusiast and noted Club Member, we dedicate this rally.



Check - Harley-Davidson Auckland New Zealand - Token Circa Unknown

Reg. No: TMR - H18

Summary:

New Zealand
Value: No value (AD)
Mint: Not recorded.

Discipline: Numismatics

More information

Tagged with: Tokens

Themes this item is part of: Numismatics & Philately Collection

Primary Classification: Tokens

Secondary Classification: New Zealand

Tertiary Classification: Checks

Denomination: No Value

Inscriptions: (Edge) Plain
(Obverse) Auckland Motorcycles / Motor / Harley-Davidson / Cycles / Auckland New Zealand
(Reverse) Blank

Shape: Round

Size: 28.55 mm

Material: Pressed Card

Weight: 2.5 grams

Issued By: Auckland Motorcycles
Auckland





521 Mt. Wellington Highway, Auckland, N.Z.



Auckland Harley-Davidson



Auckland Harley-Davidson

@AucklandHarleyDavidson



AUCKLAND *Harley-Davidson*

BACK PRINT



Check -Nelson. Civic House New Zealand - Token Circa Unkown

Reg. No: TMR - N74

Summary: This Token is the same as a Brian Boru Hotel Token
 New Zealand See:- "Brian Boru Hotel" Token
 Value: No value(AD) Could be a mule?
 Mint: Not recorded.
Discipline: Numismatics

More information

Tagged with: Tokens
Themes this item is part of: Numismatics & Philately Collection
Primary Classification: Tokens
Secondary Classification: New Zealand
Tertiary Classification: Checks
Denomination: No value

Inscriptions: (Edge) Plain
 (Obverse) (Pictures) Civic House / Fifeshire Rock / Nelson Cathedral
 (Reverse) Brian Boru Hotel / (Pictures) / Established 1868

Shape: Round
Size: 30.09 mm - 30.14 mm
Material: Brass
Weight: 9.7 grams
Issued By: Nelson ???



Reverse:-- Nelson Souvenir Token



The Nelson reverse shown above, is from a "Tourist Dollar", made by Bob Gillam, in the 2000's



Arrow Rock (New Zealand)

Arrow Rock (also **Fifeshire Rock**) is a small island in Tasman Bay, off the coast of Nelson, New Zealand. There is a narrow channel between the rock and Haulashore Island.

Situated within Nelson Harbour, Arrow Rock was site of the *Fifeshire* wreck in 1842, which gave the rock its secondary name. There are a number of spotted shags who live on the rock.

The rock is named after the first ship to sail into Nelson harbour, the *Arrow*. She was a 212-ton brig chartered by the New Zealand Company and used as store ship on the company's expedition to set up a settlement in Tasman Bay. She sailed into Nelson harbour on 2 November 1841 and was followed the next day by the surveyors barques *Whitby* and *Will Watch*.



Waterpainting of Port Nelson, with the small Arrow Rock on the far right.

Fifeshire wreck

The barque *Fifeshire* totally wrecked on Arrow Rock on Sunday, February 27, 1842. It had brought out for a party of settlers for Nelson. After discharging her cargo, she got under weigh with a pilot on board. When she reached the narrows opposite Arrow Rock, the wind suddenly died away, and the tide drifted her upon the rocks. Other ships to be wrecked after hitting the rock include the schooner *Three Sisters* on 15 September 1866.

Check - Brian Boru Hotel. Pollen Street, Thames New Zealand - Token Established Thames 1868

Reg. No: TMR - B15

Summary:

New Zealand

Value: No value

Mint: Not recorded.

Discipline: Numismatics

More information

Tagged with: Tokens

Themes this item is part of: Numismatics & Philately
Collection

Primary Classification: Tokens

Secondary Classification: New Zealand

Tertiary Classification: Checks

Denomination: No value

Inscriptions: (Edge) Plain
(Obverse) Brian Boru Hotel / (Hotel building and Stage Coach, Pictures) / Established 1868
(Reverse) This entitles the Bearer / to / Victuals & / Beverages / at the / Brian Boru Hotel Thames

Shape: Round

Size: 30.00 mm - 30.08 mm

Material: Brass

Weight: 9.7 grams

Issued By: The Brian Boru Hotel
Pollen Street. Thames



Pollen Street, Thames

Bay of Plenty Times, 12 June 1905:

FATAL FIRE

THAMES, Sunday. A fire broke out this morning, about thrre o'clock, at the Brian Boru Hotel, Pollen St., owned and occupied by Mrs Kate Twohill.

The flames had a good hold of the building before the alarm was given.

The brigades were quickly on the spot and succeeded in confining the fire to the upper story and it was not long before the fire was completely subdued.

The whole of the back portion of the upper storey was completely gutted and the furniture destroyed.

After the fire had been extinguished, it was found that two of the boarders were missing and on search being made in the rooms occupied by them, their dead bodies were found, in both cases lying across the bed.

The names of the deceased were Peter McNab, of the firm Mason and McNab, monumental masons of Auckland, who leaves a wife and family, and Joseph Sheldon, bushman, working at Turua. Sheldon was a single man, 46 years of age.

The outbreak occurred immediately over the kitchen, the cause of the fire is not known. Suspicions of foul play allayed.

Wanganui Herald, 1905:

(Per United Press Association.)

Thames, June 11.

At three o'clock this morning the Brian Boru Hotel, a two-story building containing over 40 rooms, was discovered to be on fire. The outbreak took place in the large eastern wing. The flames spread with lightening-like rapidity, along the passage of the upper storey, rendering the escape of the occupants difficult. The fire had obtained a firm hold when the brigade appeared, and it was only suppressed when the whole of the upper portion had been destroyed. The lower part was completely gutted. All the inmates managed to escape - many clad in night apparel - except two, John McNab, a member of the firm of Mason and McNab, monumental masons, of Auckland, and Joseph Sheldon, a bushman from the Turua district near the Thames. The bedrooms of both were situated in the portion of the building where the fire raged fiercest. When the fire was overcome, the bodies of the unfortunate men were discovered in their rooms. McNab had partially dressed, and was evidently endeavouring to reach the door, when overcome by the suffocating fumes, to which he succumbed. His body, which was found alongside his bed, was partly burnt. Sheldon must have been asphyxiated with great suddenness. His body was found lying across his bed, only slightly burnt. McNab, who was about fifty years of age, leaves a wife and family in Auckland. Sheldon was single, and it is believed he has no relatives in the colony. Many inmates had narrow escapes and lost everything, including a goodly quantity of jewellery and valuables. The hotel was owned and occupied by [Kate Twohill](#), an old resident of the Thames. The building was only rebuilt a few months ago. The insurances on the building and furniture are not available.



The Brian Boru Hotel, Pollen Street, Thames



The Brian Boru Hotel, Thames, as it is today.

Check - AUCKLAND, Tourist Dollar New Zealand - Token Circa unkown

Reg. No: TMR - A31

Summary:

New Zealand
Value: No value (AD)
Mint: Not recorded.

Discipline: Numismatics

More information

Tagged with: Souvenir/Tourist tokens

Themes this item is part of: Numismatics & Philately Collection

Primary Classification: Tokens

Secondary Classification: New Zealand

Tertiary Classification: Checks

Denomination: No value

Inscriptions: (Edge) Plain
(Obverse) Auckland Museums - Zoo - Beaches - (Pictures)
(Reverse) New Zealand Tourist Dollar / Map

Shape: Round

Size: 30.12 mm

Material: Brass

Weight: 9.6 grams

Issued By: AUCKLAND
Tourist Tokens





Obverse

Lettering:

AUCKLAND MUSEUMS - ZOO - BEACHES - LAND SEA
AND AIR TOURING
RANGITOTO ISLAND
HARBOUR BRIDGE
GULF CRUISING
ONE TREE HILL
DEVONPORT FERRY
CITY OF SAILS



Reverse

Map of New Zealand

Lettering:

NEW ZEALAND TOURIST DOLLAR
BAY OF ISLANDS
AUCKLAND
ROTORUA
TAUPO
NEW PLYMOUTH

Features

Country	** Exonomia ** (Tourist Tokens - New Zealand)
Type	Token
Value	1 Dollar (1)
Composition	Brass
Weight	12.1 g
Diameter	30.4 mm
Thickness	2.2 mm
Shape	Round
Orientation	Coin alignment ↑↓

GISBORNE
NAPIER
NELSON
WELLINGTON
GREYMOUTH
CHRISTCHURCH
MT. COOK
TE ANAU

N.Z Auckland City of Sails Sky Tower Coin

TMR - A31a

Metal ;Brass

30mm approx

As per photo's



N.Z Auckland City of Sails Sky Tower Souvenir Coin

Check - Patriotic New Zealand New Zealand - Token Circa 1914

Reg. No: TMR - P26

Summary:

New Zealand

No denomination(AD)

Mint: No record

Discipline: Numismatics

More information

Tagged with: Medallion/Token

Themes this item is part of: Numismatics & Philately Collection

Primary Classification: Tokens

Secondary Classification: New Zealand

Tertiary Classification: Checks

Denomination: No value

Inscriptions: (Edge) Plain
(Obverse) (Head) / Patriotic New Zealand
(Reverse) August 1914 / England Expects That Every Man Will Do
His Duty / European War

Shape: Round

Size: 25.00 mm

Material: Brass

Weight: 4.7 grams

Issued By: N.Z. Govt. Wellington



First World War - overview

New Zealand goes to war

The capture of German Samoa

Before the outbreak of war, Prime Minister William Massey had made it clear that New Zealand's main contribution would be supplying troops to the major theatre of conflict. After 5 August 1914, preparations to do this began rapidly. But before New Zealand could commit its troops to Europe, any direct threat in the Pacific region had to be removed. The first objective was to capture German Samoa.

The Germans had established a wireless station at Apia in Samoa. On 6 August, the British informed the New Zealand government that the capture of German Samoa would be a 'great and urgent Imperial service'. Australian intelligence advised that a German-officered constabulary of around 80 men and a gunboat protected the station. This was no match for the New Zealand Expeditionary Force (NZEF) of about 1400 men, led by Colonel Robert Logan, which achieved its objective without resistance on 29 August. This was the second German territory, after Togoland in Africa, to fall to the Allies in the First World War.

On 23 August, Japan declared war on Germany, assuring the Allies of naval dominance in the Pacific. The Japanese quickly set about capturing German territories north of the Equator.

Main action

After a delay while a stronger naval escort could be arranged, the main body of the NZEF left New Zealand on 16 October 1914. Most thought they were headed to fight in France but this changed when the Ottoman Empire (Turkey) entered the war on the side of the Central Powers on 5 November.

New Zealand and Australian troops disembarked in Egypt to complete their training. From here, they headed to the Gallipoli Peninsula, Turkey, in April 1915. Some 2779 New Zealanders died during this unsuccessful campaign.

Check -Last Penny of Pakuratahi. Nth. of Upper Hutt New Zealand - Token Circa 1900's

Reg. No: TMR - L6

Summary:

New Zealand

Value: No value

Mint: Not recorded

Discipline: Numismatics

More information

Tagged with: Tag / token

Themes this item is part of: Numismatics & Philately Collection

Primary Classification: Tokens

Secondary Classification: New Zealand

Tertiary Classification: Checks

Denomination: English penny

Inscriptions: (Edge) Plain
(Obverse) Last / Penny Of / Pakuratahi / Saw Mill / W???
(Reverse) Queen Victoria (veiled head penny)

Shape: Round

Size: 30.88 mm

Material: Copper

Weight: 8.4 grams

Issued By: Pakuratahi Saw Mill
Pakuratahi Forest.



LAST PENNY OF PAKURATAHI SAW MILL

(and another few illegible letters - W something something)

About

The Pakuratahi Forest covers the western side of the Remutaka ranges north of Upper Hutt and includes lands in the Kaitoke basin as well as the main Pakuratahi catchment. At just over 8,000ha this future water collection area is a key link in the chain of large forests covering the Akatarawa, Tararua, Remutaka and Orongorongo ranges. Mainly native bush, the forest also contains some 775ha of exotic plantation stands in the northern part, just south of SH2.

The area is best known for its walking, swimming, mountain biking and the historic structures of the 1870s Remutaka Railway.



Queen Victoria Veiled Head Penny,

Check - Dunedin, Tourist Dollar (World's Steepest Street) New Zealand - Token Circa 2010---

Reg. No: TMR - D11

Summary:

New Zealand

Value: No value (AD)

Mint: not recorded.

Discipline: Numismatics

More information

Tagged with: Souvenir / tokens

Themes this item is part of: Numismatics & Philately Collection

Primary Classification: Tokens

Secondary Classification: New Zealand

Tertiary Classification: Checks

Denomination: No value

Inscriptions: (Edge) Plain
(Obverse) World's Steepest / (picture 1 in 1 266) Baldwin St. / Dunedin N.Z.
(Reverse) New Zealand / Tourist Dollar / Map of N.Z.

Shape: Round

Size: 30.34 mm–30.40 mm

Material: Brass

Weight: 9.0 grams

Issued By: Dunedin



WIKIPEDIA

Baldwin Street

Baldwin Street, in Dunedin, New Zealand is located in the residential suburb of North East Valley, 3.5 kilometres (2.2 mi) northeast of Dunedin's central business district. It is recognised by *Guinness World Records* as the steepest street in the world.

Baldwin Street



A house on Baldwin Street



A woman descends the street



The location of Baldwin Street within Dunedin's urban area

Description

A short straight street a little under 350 metres (1,150 ft) long, Baldwin Street runs east from the valley of the Lindsay Creek up the side of Signal Hill towards Opoho, rising from 30 m (98 ft) above sea level at its junction with North Road to 100 m (330 ft) above sea level at the top, an average slope of slightly more than 1:5. Its lower reaches are only moderately steep, and the surface is asphalt, but the upper reaches of this cul-de-sac are far steeper and surfaced in concrete (200 m or 660 ft long) for ease of maintenance (bitumen—in either chip seal or asphalt—would flow down the slope on a warm day) and for safety in Dunedin's frosty winters.

The 161.2-metre-long (529 ft) top section climbs 47.2 metres (155 ft) vertically, an average gradient of 1:3.41. At its maximum, about 70 metres (230 ft) from the top, the slope of Baldwin Street is about 1:2.86 (19° or 35%). That is, for every 2.86 metres (9.4 ft) travelled horizontally, the elevation changes by 1 metre (3.3 ft).

History

The street's steepness was unintentional. As with many other parts of early Dunedin, and indeed New Zealand, streets were laid out in a grid pattern with no consideration for the terrain, usually by planners in London. In the case of Baldwin Street (and much of the Dunedin street plan), the layout was surveyed by Charles Kettle in the mid-19th century. The street is named after William Baldwin, an Otago Provincial Councillor and newspaper founder, who subdivided the area.

For cars it is a cul-de-sac, but Baldwin Street is linked across the top by Buchanan Street, a footpath following an otherwise unformed (i.e. unpaved) road linking it with Calder Avenue and Arnold Street, which are unformed in their upper reaches where Baldwin is steepest. The streets running parallel to Baldwin are all quite steep: Arnold Street (1:3.6), Dalmeny Street (1:3.7), and Calder Avenue (1:5.4).

In 1987, Baldwin Street was officially recognized as the world's steepest street by the Guinness Book of Records following a two-year campaign by the broadcaster Jim Mora. At the time, Baldwin Street topped two competing streets in San Francisco, which hitherto had held the title of being the steepest streets in the world.

On 16 July 2019, Baldwin Street lost its title of Worlds Steepest Street to Ffordd Pen Llech, with Baldwin Street being at a gradient of 35%, and Ffordd Pen Llech being at a gradient of 37.45%. Otago Chamber of Commerce chief executive Dougal McGowan remarked that it could lead to a drop in visitor numbers to Baldwin Street but added that it could be a "blessing in disguise for some residents fed up with crowds of visitors, trampled gardens and bad driving decisions on the street." Mayor of Dunedin Dave Cull said that the Dunedin City Council could consider altering the signage wording from the world's steepest street to the southern hemisphere's steepest street.

Check - Abberfield Industries. Sydney, Australia**New Zealand - Token Circa ???**

Reg. No: TMR - A33 This type of Token was used at Smithfield Freezing Works. Timaru

Summary:

New Zealand

Value: No denomination (AD)

Mint: Abberfield Technology Pty Ltd

Discipline: Numismatics

And used around N.Z. mostly in camp grounds, for the use in coin operated showers, washing machines and dryers.

More information**Tagged with:** Dispenser tokens**Themes this item is part of:** Numismatics & Philately Collection**Primary Classification:** Tokens**Secondary Classification:** New Zealand**Tertiary Classification:** Checks**Denomination:** No value

Inscriptions: (Edge) Plain
(Obverse) Abberfield Industries / A I symbol / Sydney
(Reverse) Use With Abberfield Industries Token Dispensers / Token

Shape: Round**Size:** 27 mm**Material:** Nickered Brass**Weight:** 9.7 grams (2.2 mm Thick)**Issued By:** Alliance, Smithfield Freezing Works, Timaru

COMPANY INFORMATION

Sydney-headquartered Abberfield Group was established in 1968 by John Colyer to meet a gap in the market for quality coin-validating and handling equipment. Today, Abberfield Technology, the manufacturing company, has four distinct product groupings: coin-validation and handling equipment; vending equipment; transportation revenue collection equipment and car-parking equipment. Abberfield Industries are suppliers of Revenue Collection Equipment, including coin, note, magnetic card and smart card systems.



Visiting address

32 Cross Street
2100
Brookvale, Sydney

Postal address

PO Box: 996
Brookvale, Sydney , 2100
Australia

Contact

Tel +61 29 939 2844
Fax +61 29 938 3462



Tokens

STANDARD ABBERFIELD TOKENS

(material embossing grade brass, nickel plated)

Abberfield Holdings

Diameter 22.6mm, thickness 2.2mm

Abberfield Industries

Diameter 27mm, thickness 2.2mm

Abberfield Technology

Diameter 30mm, thickness 2.4mm



Check - Aotearoa - New Zealand

New Zealand - Token Circa 2000's

Reg. No: TMR - A34

Summary:

New Zealand
No value (AD)
Mint: not recorded.

Discipline: Numismatics

More information

Tagged with: Tokens / Souvenir Coins

Themes this item is part of: Numismatics & Philately Collection

Primary Classification: Tokens

Secondary Classification: New Zealand

Tertiary Classification: Checks

Denomination: No Value

Inscriptions: (Edge) Milled
(Obverse) TIKI / Aotearoa - New Zealand
(Reverse) Land of the long white cloud / FERNS

Shape: Round

Size: 40.01 mm - 40.03 mm
Thickness 3.5 mm

Material: C&N

Weight: 29.7 grams

Issued By: Souvenir Shops



Check - National Army Museum - New Zealand New Zealand -Medal/ Token Circa 2000's

Reg. No: TMR - N76

Summary:

New Zealand
No Value (AD)
Mint: Not recorded

Discipline: Numismatics

More information

Tagged with: Tokens / Souvenir Coins

Themes this item is part of: Numismatics & Philately Collection

Primary Classification: Token

Secondary Classification: New Zealand

Tertiary Classification: Checks

Denomination: No value

Inscriptions: (Edge) Plain
(Obverse) National / TANK / Army Museum
(Reverse) We Will / Remember / Them

Shape: Round

Size: 30.25 mm - 30.18 mm
Thickness 2.2 mm

Material: Brass

Weight: 11.8 grams

Issued By: Souvenir Shops



Check - Pure and Natural NZ New Zealand - Token Circa 2000's

Reg. No: TMR - P27

Summary:

New Zealand
No value (AD)
Mint: not recorded.

Discipline: Numismatics

More information

Tagged with: Tokens / Souvenir Coins

Themes this item is part of: Numismatics & Philately Collection

Primary Classification: Tokens

Secondary Classification: New Zealand

Tertiary Classification: Checks

Denomination: No Value

Inscriptions: (Edge) Milled
(Obverse) Pictures / Pure & Natural NZ
(Reverse) New Zealand / FERN / "Sweet As" /

Shape: Round

Size: 40.00 mm

Material: C&N

Weight: 30.00 grams

Issued By: Souvenir Shops



Aoraki Mount Cook - New Zealand

Check - Aoraki Mount Cook - New Zealand

New Zealand - Token Circa 2000's

Reg. No: TMR - A35

Summary:

New Zealand
 No value (AD)
 Mint: not recorded.

Discipline: Numismatics**More information**

Tagged with: Tokens / Souvenir Coins

Themes this item is part of: Numismatics & Philately Collection

Primary Classification: Tokens**Secondary Classification:** New Zealand**Tertiary Classification:** Checks**Denomination:** No Value

Inscriptions: (Edge) Milled
 (Obverse) Aoraki / Mount Cook / Map and Picture
 (Reverse) New Zealand / FLAG / Kiwi

Shape: Round

Size: 40.00 mm
 Thickness 3.5 mm

Material: C&N**Weight:** 29.70 grams**Issued By:** Souvenir Shops

Craters of the Moon Geothermal Walk - Taupo - New Zealand

Check - Taupo - New Zealand**New Zealand - Token Circa 2000's**

Reg. No: TMR - T37

Summary:

New Zealand

No value (AD)

Mint: not recorded.

Discipline: Numismatics**More information****Tagged with:** Tokens / Souvenir Coins**Themes this item is part of:** Numismatics & Philately Collection**Primary Classification:** Tokens**Secondary Classification:** New Zealand**Tertiary Classification:** Checks**Denomination:** No Value**Inscriptions:** (Edge) Plain
(Obverse) Taupo / Craters of the / MOON / Geothermal Walk / New Zealand
(Reverse) PICTURE / Craters of the / MOON / Geothermal Walk**Shape:** Round**Size:** 28.08 mm
Thickness 1.5 mm**Material:** Brass**Weight:** 7.00 grams**Issued By:** Souvenir Shops

Great Lake Taupo Natures Ultimate Playground New Zealand

Check - Great Lake Taupo - New Zealand**New Zealand - Token Circa 2000's**

Reg. No: TMR - G8

Summary:

New Zealand

No value (AD)

Mint: not recorded.

Discipline: Numismatics**More information**

Tagged with: Tokens / Souvenir Coins

Themes this item is part of: Numismatics & Philately Collection

Primary Classification: Tokens**Secondary Classification:** New Zealand**Tertiary Classification:** Checks**Denomination:** No Value

Inscriptions: (Edge) Plain
 (Obverse) Great Lake TAUPO / Natures Ultimate Playground / MAP
 / New Zealand
 (Reverse) Sail Boat / Great Lake / Taupo

Shape: Round**Size:** 28.02 mm
Thickness 1.5 mm**Material:** Brass**Weight:** 7.1 grams**Issued By:** Souvenir Shops

Huka Honey Hive Taupo New Zealand - Saving The Planet - One Bee At A Time

Check - Huka Honey Hive. Taupo - New Zealand New Zealand - Token Circa 2000's

Reg. No: TMR - H21

Summary:

New Zealand
No value (AD)
Mint: not recorded.

Discipline: Numismatics

More information

Tagged with: Tokens / Souvenir Coins

Themes this item is part of: Numismatics & Philately Collection

Primary Classification: Tokens

Secondary Classification: New Zealand

Tertiary Classification: Checks

Denomination: No Value

Inscriptions: (Edge) Plain
(Obverse) Saving The Planet - One Bee At A Time / huka / honey /
hive / Taupo / New Zealand
(Reverse) 3 PICTURES (In a circle)

Shape: Round

Size: 28.07 mm - 28.05 mm
Thickness 1.5 mm

Material: Brass

Weight: 7.0 grams

Issued By: Souvenir Shops



Open 7 days. A unique taste experience with free honey, mead & liqueur tastings. View live beehives, discover health & wellness products, divine honey-based skincare, an amazing range of gifts and enjoy delicious honey ice cream.



About

Free entry into New Zealand's largest showcase of honey products. Enjoy free tastings of 100% pure New Zealand honey, honey wine (mead) and liqueurs.

Learn about the health benefits of active manuka honey, royal jelly, bee pollen and more. Sample a wide range of beautiful honey-based skin-care and wellness products.

View our bees in their beehives, discover more about the amazing honeybee through our interactive displays and DVD show. Learn about our sustainability journey and our mission to save the planet, one bee at a time!

Complete your experience by relaxing in our lounge or gardens with a coffee or delicious honey ice-cream.

There's something for all the family - come and see what the 'buzz' is all about!



2019
**Certificate of
Excellence**

Check - Taupo -Spa Token. New Zealand

New Zealand - Token Circa 2000's

Reg. No: TMR - T38

Summary:

New Zealand
 No value (AD)
 Mint: not recorded.

Discipline: Numismatics

More information

Tagged with: Tokens / Souvenir Coins

Themes this item is part of: Numismatics & Philately Coll

Primary Classification: Tokens

Secondary Classification: New Zealand

Tertiary Classification: Checks

Denomination: No Value

Inscriptions: (Edge) Plain
 (Obverse) Spa Token / Taupo / New Zealand
 (Reverse) www.taupohotsprings.com / TOKEN / Premier Mineral Water Spa

Shape: Round

Size: 22.8 mm

Material: Brass

Weight: ?? grams

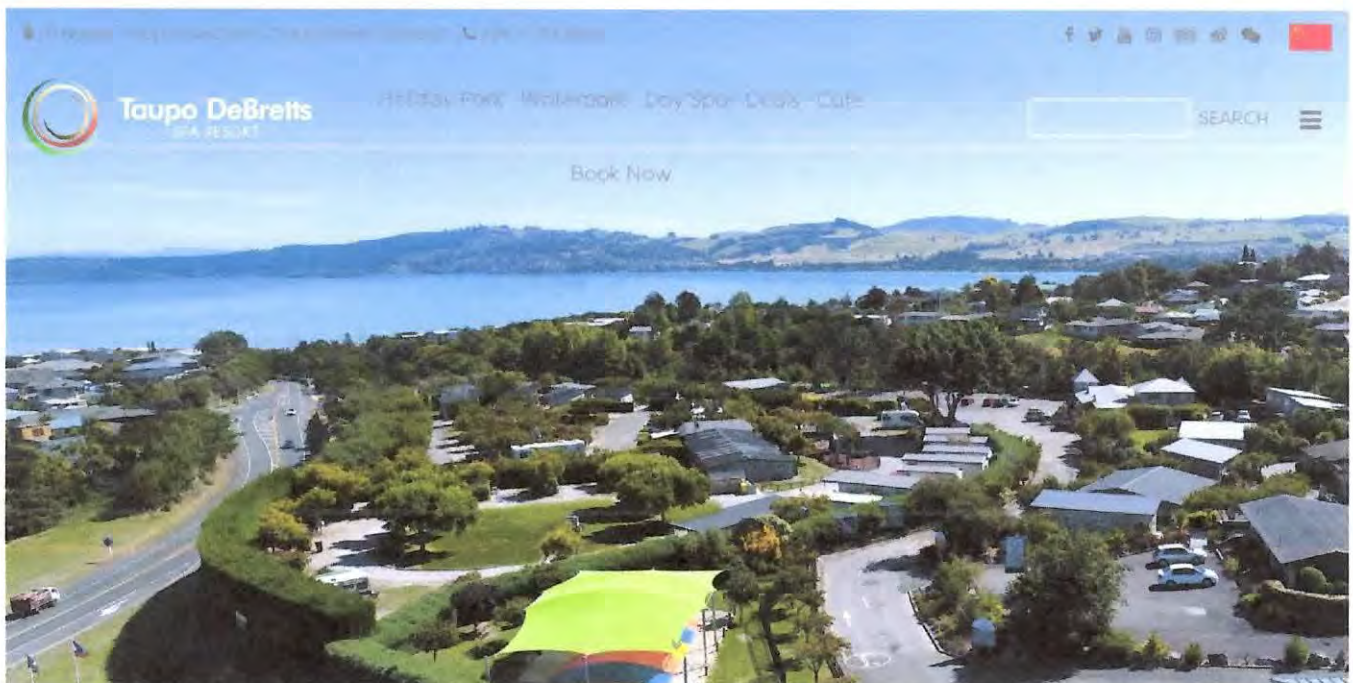
Issued By: Souvenir Shops



Welcome to Taupo DeBretts Spa Resort - the ultimate all-year-round relaxation and recreation destination! Here you'll find a mix of unique New Zealand experiences - from the mineral waters of the historic **Taupo Hot Springs** to our modern **Living Waters Spa** and award-winning Taupo **Holiday Park**. Satisfy your tummy with a hearty breakfast and snack at the **Savour Cafe**.

At Taupo DeBretts, you choose your adventure. Just a stone's throw from stunning Lake Taupo and a million miles from stress, our accommodation options range from luxury accommodations to kiwi favourites like motels, cabins, campsites and campervan/RV sites. Take relaxation to the next level in the thermal mineral pools and luxurious spa facility. A REAL resort with enough to choose from. Start packing!

Taupo DeBretts Spa Resort - Hot Pools, Accommodation and Spa



PARK MAP

Check - International Exhibition, Christchurch, N.Z. New Zealand - Token

Circa 1906-07

Reg. No: TMR - i14

Summary:

New Zealand

No value(AD)

Mint: not recorded.

Discipline:

Numismatics

New Zealand International Exhibition, Christchurch, 1906-1907.

Voided personalised medalet 32.5mm in aluminium named to Ruby Stringer, Rowe St, Ballarat (Australia).

More information

Tagged with:

Tokens / Souvenirs

Themes this item is part of:

Numismatics & Philately Collection

Primary Classification:

Tokens

Secondary Classification:

New Zealand

Tertiary Classification:

Checks

Denomination:

No value

Inscriptions:

(Edge) Plain

(Obverse) (In centre) Christ Church / 1906 / 07 /*N.Z. *

(Reverse) Ruby Stringer* Rowe St.*Ballarat*

Shape:

Round

Size:

32.5 mm

Material:

Aluminium

Weight:

? grams

Issued By:

Pressed at Exhibition
Christchurch



The **New Zealand International Exhibition** (the biggest in the country to that time) opened on 1 November 1906 in Hagley Park, Christchurch, New Zealand. Nearly two million people visited the exhibition during the next few months. A 90 chains (1,800 m) branch railway line was built in late 1905 across North Hagley Park starting at the Riccarton station to service the exhibition (goods traffic only) and a temporary tram line was built in Peterborough Street, Park Terrace and Salisbury Street to connect with the Victoria Street tram. The attractions included New Zealand's first professional symphony orchestra (conducted by Alfred Hill), and the first Dominion pipe band contest, which was won by the Dunedin Highland Pipe Band.

Amusements included a water chute on Victoria Lake, a dragon train, a toboggan course, a helter-skelter and a gondola. The Pike featured penny in the slot machines, a maze, and Professor Renno and his Palace of Illusions. Visitors were also able to view a 360 degree panoramic painting of the Battle of Gettysburg, accompanied by a history of the battle, at the Cyclorama.

The exhibition closed on 15 April 1907 and the remaining buildings had been removed by the end of August 1907.

The architect for the buildings was Joseph Maddison. He also designed the Carlton Hotel, which was commissioned by the Wards's Brewery to be built in time for the International Exhibition.

New Zealand International Exhibition



Main building

Overview

BIE-class	Unrecognized exposition
Name	New Zealand International Exhibition
Area	164 hectares (410 acres)
Visitors	1,967,632
Location	
Country	New Zealand
City	Christchurch
Venue	Hagley Park
Coordinates	43°31'48"S 172°37'12"E
Timeline	
Opening	1 November 1906
Closure	15 April 1907



Chromolithograph of the Exhibition Buildings in Hagley Park by Philip Robert Presants

Check - Christchurch Gondola New Zealand New Zealand - Token Circa 1992

Reg. No: TMR - C54

Summary:

New Zealand
Value: No value (AD)
Mint: not recorded.

Discipline: Numismatics

More information

Tagged with: Souvenir Tokens

Themes this item is part of: Numismatics & Philately Collection

Primary Classification: Tokens

Secondary Classification: New Zealand

Tertiary Classification: Checks

Denomination: No value

Inscriptions: (Edge) Plain
(Obverse) Christchurch / (Picture Cabin) / New Zealand
(Reverse) New Zealand / (Map) / Souvenir Coin

Shape: Round

Size: 30.19 mm

Material: Brass

Weight: 9.0 grams

Issued By: CHRISTCHURCH
ATTRACTIONS. NZ



The **Christchurch Gondola** is a tourist attraction service offered by Christchurch Attractions (<http://christchurchattractions.nz>) in Christchurch, New Zealand. The gondola base is located in Heathcote Valley, and it traverses the slopes of Mount Cavendish in the Port Hills. Also known as a cable car, the Christchurch Gondola's course is 1,000 metres (1,100 yd) in length, and from the summit it is possible to see across the city of Christchurch and the Canterbury Plains to the Southern Alps in the north and west, and down into Lyttelton Harbour and Banks Peninsula in the south and east. Sometimes used as a transport method for visitors who use the walking tracks on Mt Cavendish, the gondola is ranked as one of the top tourist attractions in Christchurch by TripAdvisor. The summit is 445 metres (1,460 ft) above sea level.



Christchurch Gondola terminal on Mount Cavendish

The gondola opened as the **Mount Cavendish Gondola** in October 1992 after a long planning process at a cost of \$NZ11.5 million. The land around the gondola was landscaped with 16,000 native tussock after the completion of construction. The gondola includes 19 cabins and has a capacity of 812 travellers per hour.

The gondola closed following the 2011 Christchurch earthquake, and was reopened in March 2013 by NZ Prime Minister John Key. In February 2016, the gondola broke down with passengers trapped in the cabins for two hours without communication from the operator. The managing director's comment that the incident was "no big deal" caused upset by those affected. Within days, the company vowed to install a speaker system into the cabins at a cost of up to NZ\$50,000 so that communication to stuck passengers became possible.

The Christchurch Gondola is operated by Christchurch Attractions (<http://christchurchattractions.nz>), who also currently operate the Christchurch Tram system.

New Zealand Souvenir Coin - Christchurch Gondala



Features

Country	** Exonomia ** (Tourist Tokens - New Zealand)
Type	Token
Diameter	30 mm
Thickness	2 mm
Shape	Round
Orientation	Medal alignment ↑↑

Check - Cockayne's Leviathan. Christchurch New Zealand - Token Circa 1910 - 20's

Reg. No: TMR - C55

Summary:

New Zealand

Value: Penny (AD)

Mint: Not recorded.

Discipline: Numismatics

More information

Tagged with: Trade tokens

Themes this item is part of: Numismatics & Philately Collection

Primary Classification: Tokens

Secondary Classification: New Zealand

Tertiary Classification: Checks

Denomination: No value

Inscriptions: (Edge) Plain
(Obverse) *Cockaynes* / Leviathan
(Reverse) Blank

Shape: Round (uniface)

Size: 27 mm

Material: Copper

Weight: W ?? grams

Issued By: Mrs.E. Cockayne's
Christchurch



Cockayne's Leviathan Hotel

Mrs. E. Cockayne - Proprietress.



THE HOTEL is replete with all MODERN IMPROVEMENTS, and contains 110 Single and 40 Double Bedrooms, all of which are unusually airy and well appointed.

Private Dining Room for Ladies.

General Tariff on application.

Letters & Telegrams receive prompt attention.

Telegrams: 'Cockayne's Leviathan.'

TELEPHONE No. 747.

**Corner Manchester and St. Asaph Streets,
CHRISTCHURCH.**

Cockayne's Leviathan Hotel (Christchurch, N.Z.)
Built in 1909 for the Eliza White Trust. Was then the city's largest hotel. Corner of Manchester and St Asaph Streets. Subsequently leased to the Salvation Army as the People's Palace. The Army's interests focussed in other directions and the hotel became the Railton Hotel. Familiar to generations of Christwegians the poorly maintained Railton closed in 1970. The Eliza White Trust offered the building for sale at \$270,000, but there was no interest. The following year the City Council offered to lease the bare site and the hotel was demolished.



TREMAINE CARWASH

667 Tremain Ave. Palmerston Nth.

(Check other Tremain Carwash Pages.)

Some different die types but the easiest way to tell is the orientation of the obverse / reverse and then the design of the car. The easiest way to spot the car design is to look at the wheels and the centre of the wheel is either filled in or hollow, also the line behind the door is different. And maybe some are made of Copper.

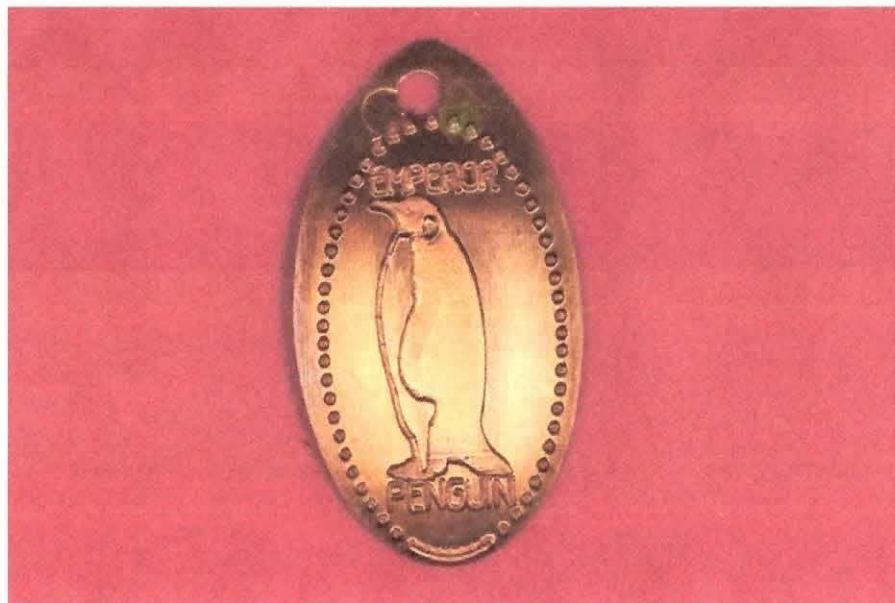


SOME ODD NEW ZEALAND ELONGATED PENNIES

Emperor Penguin Elongated Penny

See:- International
Antarctic Centre, Ch Ch.

TMR - i12 +a



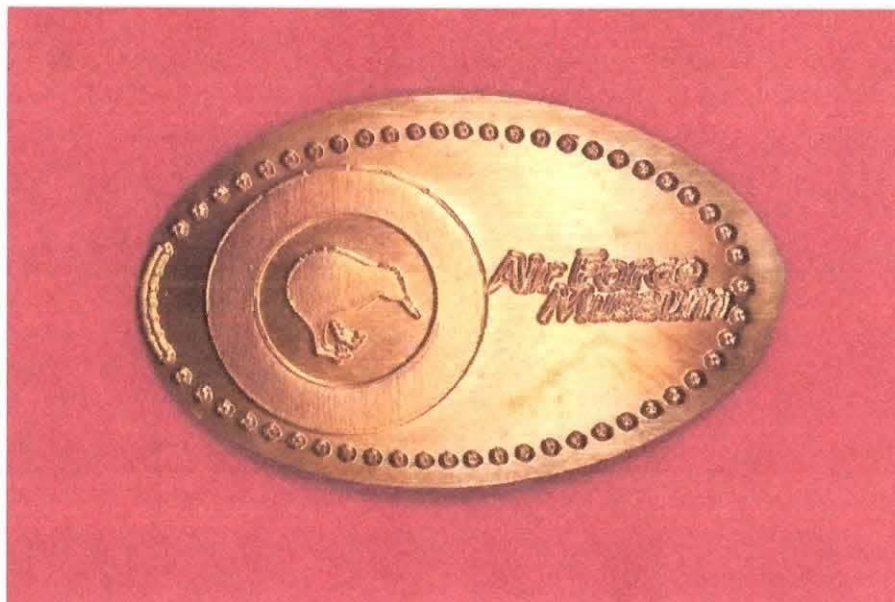
Emperor Penguin Elongated Penny (NZ item)

NZ Air Force Museum Elongated Penny

See:- R.N.Z.A.F. STATION

45 Harvard Ave. Wigram

TMR - R9 +a



NZ Air Force Museum Elongated Penny

Check - Cloud 9 Trampoline Park, Palmerston North New Zealand - Token Circa 2000's

Reg. No: TMR - C56

Summary:

New Zealand
Value: Penny (AD)
Mint: Not recorded.

Discipline: Numismatics



Paper prize token / ticket.

More information

Tagged with: Trade tokens

Themes this item is part of: Numismatics & Philately Collection

Primary Classification: Tokens

Secondary Classification: New Zealand

Tertiary Classification: Checks

Denomination: No value

Inscriptions: (Edge) Plain
(Obverse) (stars) / (cloud 9) / CLOUD / Trampoline Park / (stars)
(Reverse) (stars) / (cloud 9) / CLOUD / Trampoline Park / (stars)

Shape: Round

Size: 24.5 mm

Material: C&N

Weight: 6.0 grams

Issued By: Palmy Trampoline Park
37 Taonui St. Palmerston Nth.





Cloud 9 Trampoline Park

Family fun! Lots of different activities including Olympic trampoline, indoor bubble soccer, ninja assault course and foam pits with climbing wall. Special under-fives area. Arcade games. Cafe area with seating, great coffee, cake and snacks.



Check - ANZ Bank Token

New Zealand - Token Circa 1970 - 1988

Reg. No: TMR - A36

Summary:

New Zealand

Value: No value

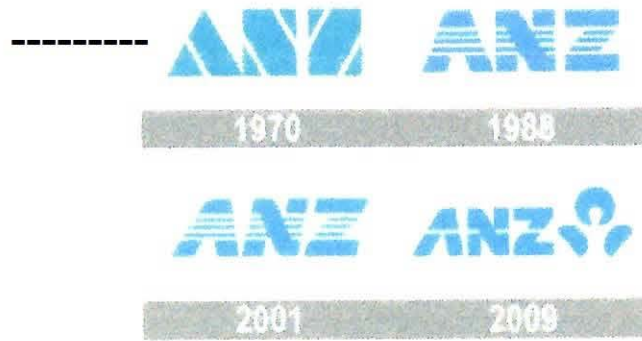
Mint: Not recorded.

Discipline: Numismatics

More information

Tagged with:	Token
Themes this item is part of:	Numismatics & Philately Collection
Primary Classification:	Tokens
Secondary Classification:	New Zealand
Tertiary Classification:	Checks
Denomination:	No value
Inscriptions:	(Edge) Plain (Obverse) ANZ (Reverse) TOKEN / ONLY
Shape:	Round
Size:	25.40 mm - 25.48 mm
Material:	Plastic (Yellow colour)
Weight:	0.8 Grams
Issued By:	ANZ Banking Australia & New Zealand





Zealand Banking Group logo and symbol ...
1000logos.net



Zealand Banking Group logo and symbol ...
1000logos.net



New Zealand Banking Group Limited (ANZ ...
findvectorlogo.com



ANZ Bank Broadbeach - The Oracle Boule...
theoracleboulevard.com.au



Anz Bank - Minto Marketplace
minto.marketplace.com.au



ANZ Banking Logo Download Vector
freelogovectors.net



Anz Bank Logo Png - 1200x398 PNG ...
pngkit.com



ANZ New Zealand (@ANZ...
twitter.com



ANZ Australia on the App St...
apps.apple.com



Zealand Banking Group A...
hielpart.com



Brand New: People Banking
underconsideration.com



Cambodia ANZ Royal Bank Australia and ...
pngwing.com



Zealand Banking Group logo and symbo...
1000logos.net

1970

- In what was then the largest merger in Australian banking history, ANZ Bank merged with the English, Scottish and Australian Bank Limited to form the present organisation, Australia and New Zealand Banking Group Limited
- Started operations in Vanuatu.

Check - P.E. Precision Engineering Co. Wellington

New Zealand - Token Circa 1970's Var 3

Reg. No: TMR - P28

Summary:

New Zealand
 Reward (AD) No value
 Mint:

	P16	79	Precision (rev. oval "Precision NZ" TM)
var 1-	P16a		As P16 but FORD on rev
var 2-	P16b		Precision
var 3-	P16c		P.E. (Precision Engineering Co., Wellington)
var 4-	P16d		P.E. 3d
var 5-	P16e		P.E. 3d Value In Kind Only

Demo sample	Copper 24mm
Tag	Copper 24mm
Demo sample	Ni 24mm
Demo sample	Ni 20mm
Demo sample, 3d	Ni 20mm
Demosample 3d	Ni 20mm

Discipline: Numismatics**More information**

Tagged with: Demo Sample Token

Themes this item is part of: Numismatics & Philately Collection

Primary Classification: Tokens

Secondary Classification: New Zealand

Tertiary Classification: Checks

Denomination: No value

Inscriptions: (Edge) Plain
 (Obverse) P.E. (In centre)
 (Reverse) P.E. (In centre)

Shape: Round

Size: 19.2 mm

Material: Ni

Weight: 3.2 Grams

Issued By: Precision Engineering Co.
 Rongotai, Wellington



Check - P.E. Precision Engineering Co. Wellington

New Zealand - Token Circa 1970's Var 4

Reg. No: TMR - P29

Summary:

New Zealand
Reward (AD) No value

Mint:

Discipline: Numismatics

More information

Tagged with: Demo Sample Token

Themes this item is part of: Numismatics & Philately Collection

Primary Classification: Tokens

Secondary Classification: New Zealand

Tertiary Classification: Checks

Denomination: No value

Inscriptions: (Edge) Plain
(Obverse) 3D / (Round hole in centre) / P E
(Reverse) 3D / (Round hole in centre) / P E

Shape: Round

Size: 19.93 mm - 19.94 mm

Material: Ni

Weight: 2.7 Grams

Issued By: Precision Engineering Co.
Rongotai, Wellington



Tyre Town Wanganui

Check - Tyre Town, Wanganui

New Zealand - Token Circa (before) 2009

Reg. No: TMR - T39

Changed name after 2009 to Whanganui

Summary:

New Zealand

No value:- (AD)

Mint: not recorded.

Discipline: Numismatics

More information

Tagged with: Tokens

Themes this item is part of: Numismatics & Philately Collection

Primary Classification: Tokens

Secondary Classification: New Zealand

Tertiary Classification: Checks

Denomination: No cash value

Inscriptions:
(Edge) Plain
(Obverse) Tyre Town / (car wheel) / Wanganui
(Reverse) Blank

Shape: Round uniface

Size: 45.00 mm

Material:

Weight:

Issued By: Tyre Town
Wanganui



Whanganui

Whanganui (/ˈhwɒŋənui/; Māori: [ɸaŋaɲui]), also spelled **Wanganui**, is a city on the west coast of the North Island of New Zealand. The Whanganui River, New Zealand's longest navigable waterway, runs from Mount Tongariro to the sea. Whanganui is part of the Manawatū-Whanganui region.

Whanganui is the ancestral home of Te Āti Haunui-a-Pāpārangi and other Whanganui Māori tribes. The New Zealand Company began to settle the area in 1840, establishing its second settlement after Wellington. In the early years most European settlers came via Wellington. Whanganui greatly expanded in the 1870s, and freezing works, woollen mills, phosphate works and wool stores were established in the town. Today, much of Whanganui's economy relates directly to the fertile and prosperous farming hinterland.

Like several New Zealand urban areas, it was officially designated a city until an administrative reorganisation in 1989, and is now run by a District Council. Although the city was called *Wanganui* from 1854, in February 2009, the New Zealand Geographic Board recommended the spelling be changed to "Whanganui". In December 2009, the government decided that while either spelling was acceptable, Crown agencies would use the *Whanganui* spelling.

On 17 November 2015, Land Information New Zealand (LINZ) announced that Wanganui District would be renamed to Whanganui District. This changed the official name of the District Council, and, because Whanganui is not a city but a district, the official name of the urban area as well.



Nickname(s): The River City



Coordinates: 39°56′S 175°03′E

Geography

Whanganui is on the South Taranaki Bight, close to the mouth of the Whanganui River. It is 200 kilometres (120 mi) north of Wellington and 75 kilometres (47 mi) northwest of Palmerston North, at the junction of State Highways 3 and 4. Most of the city lies on the river's northwestern bank, because of the greater extent of flat land. The river is crossed by four bridges: Cobham Bridge, City Bridge, Dublin Street Bridge and Aramoho Railway Bridge (rail and pedestrians only).

Both Mount Ruapehu and Mount Taranaki can be seen from Durie Hill and other vantage points around the city.

History

The area around the mouth of the Whanganui river was a major site of pre-European Māori settlement. The pā named Pūtiki (a contraction of *Pūtikiwharanui*) was and is home to the Ngāti Tūpoho hapū of the iwi Te Āti Haunui-a-Pāpārangi. It took its name from the legendary explorer Tamatea Pōkai Whenua, who sent a servant ashore to find flax for tying up his topknot (*pūtiki*).

In the 1820s coastal tribes in the area assaulted the Kapiti Island stronghold of Ngāti Toa chief Te Rauparaha. Te Rauparaha retaliated in 1830, sacking Pūtiki and slaughtering the inhabitants.



Pūtiki pā on the Whanganui River in 1850

The first European traders arrived in 1831, followed in 1840 by missionaries Octavius Hadfield and Henry Williams who collected signatures for the Treaty of Waitangi. On 20 June 1840, the Revd John Mason, Mrs Mason, Mr Richard Matthews (a lay catechist) and his wife Johanna arrived to establish a mission station of the Church Missionary Society (CMS). The Revd Richard Taylor joined the CMS mission station in 1843. The Revd Mason drowned on 5 January 1843 while crossing the Turakina River. By 1844 the brick church built by Mason was inadequate to meet the needs of the congregation and it had been damaged in an earthquake. A new church was built under the supervision of Taylor, with the timber supplied by each pā on the river in proportion to its size and number of Christians.

After the New Zealand Company had settled Wellington it looked for other suitable places for settlers. William Wakefield, younger brother of Edward Gibbon Wakefield, negotiated the sale of 40,000 acres in 1840, and a town named Petre – after Lord Petre, one of the directors of the New Zealand Company – was established four kilometres from the river mouth. The settlement was threatened in 1846 by Te Mamaku, a chief from up the Whanganui River. The British military arrived on 13 December 1846 to defend the township.

Check - A. Harvey & Sons. Auckland New Zealand - Token Circa Unknown

Reg. No: TMR - A37

Summary: A Harvey & Sons Ltd Auckland Trade mark plaque
New Zealand
Value: No denomination (AD)
Mint: Not recorded.
Discipline: Numismatics

More information

Tagged with: Tokens. Trade Mark Sign

Themes this item is part of: Numismatics & Philately Collection

Primary Classification: Tokens

Secondary Classification: New Zealand

Tertiary Classification: Checks

Denomination: No value

Inscriptions: (Edge) Plain
(Obverse) A. Harvey & Sons Ltd / Trade / RV / Mark REC / Auckland
(Reverse) Blank

Shape: Round uniface

Size: 50.00 mm

Material:

Weight:

Issued By: Alex Harvey & Sons
Albert Street, Auckland



Alex Harvey & Sons, Albert Street, Auckland

981

Names

Alex
Harvey
Industries
Ltd Subject
New
Zealand
Loan and
Mercantile
Agency
Company
Subject



Date: (ca 1914)

Exterior view of the Alex Harvey and Sons Ltd building, Albert street, Auckland city. Delivery truck visible at centre right.



Date (ca 2000)

Check -Tramways Wellington New Zealand - Token Circa 1920's

Reg. No: TMR -T40

Summary:

New Zealand

No Value(AD)

Mint: Precision Engineering Company Ltd. Rongotia Wellington

Discipline: Numismatics

More information

Tagged with:	Tag Token
Themes this item is part of:	Numismatics & Philately Collection
Primary Classification:	Tokens
Secondary Classification:	New Zealand
Tertiary Classification:	Checks
Denomination:	No value
Inscriptions:	(Edge) Plain (Obverse) Tramways / (hole) / Wellington (Reverse) Precision
Shape:	Round (Hole)
Size:	24.00 mm
Material:	Copper
Weight:	1.6 grams
Issued By:	TRAMWAYS WELLINGTON



See:- "WELLINGTON TRAMWAYS" For more info.

Tuku Ihotanga > Ngā Kā Rēra i Te Whanganui- a-Tara, 1878-1964

Heritage > Trams in Wellington, 1878-1964



The first horse car in Wellington, taken opposite the old Newtown Hotel, c. 1900.

New Zealand's last electric tram trip 2 May 1964



Second last tram #252 to Newtown

Check - Manawatu Golf Club. New Zealand - Token Circa ?

Reg. No: TMR - M30

Summary:

New Zealand
Value: No Value
Mint: Not recorded.

Discipline: Numismatics



Some could be "TOKENS" from golf ball markers

More information

Tagged with: Produce/Shop tokens

Themes this item is part of: Numismatics & Philately Collection

Primary Classification: Tokens

Secondary Classification: New Zealand

Tertiary Classification: Checks

Denomination: No Value

Inscriptions: (Edge) Plain
(Obverse) Shield / Est. 1895 / Manawatu / Golf Club / Five coloured bar
(Reverse) (symbol) / Sporte / Leisure

Shape: Round

Size: 25.07 mm - 25.07 mm x 1.2 mm Thick

Material: Nickel & Single sided enamel

Weight: 3.8 grams

Issued By Manawatu Golf Club Shop
19 Centennial Drive, Palmerston Nth.



19 Centennial Drive, Palmerston North



Functions & Events

Overlooking the 18th green, our modern Clubhouse is the ideal venue for your next business meeting, workshop, product launch, seminar, conference, wedding reception or special occasion.

[FIND OUT MORE](#)

The Manawatu Golf Club is situated in Palmerston North's suburb of Hokowhitu, bordering the banks of the Manawatu River and the city's Centennial Lagoon.

The Club claims the title of the oldest golf course in New Zealand and has a proud history of hosting New Zealand's top Professional and Amateur events including the 2017 and 2018 NZPGA Championships, 5 NZ Open Championships, 8 NZ Amateur Championships and various other national championships.

The course is regarded as Manawatu's premier 18 hole layout, and provides a challenging yet fair test for golfers of all abilities. Tree-lined, beautifully manicured fairways, fast rolling greens and over 50 challenging white sand bunkers feature throughout the parklike course.

Visitors and casual golfers are always welcome at Manawatu Golf Club to test their skills on our championship layout. Please note however there will be times where visiting players are unable to play, due to members only Club days and corporate events. **Green fees** are very affordable, and available during most days of the week. Phone the Pro Shop on 06 357 8793 ext 1 to confirm course availability.

If you are looking to play golf on a regular basis there are many advantages to **becoming a golf club member**.

Please note that all visitors and members must observe the **club rules and dress code** both on the course and in the clubhouse.

We look forward to seeing you at our course sometime soon.



Check - Lakes Resort. Pauanui. Coromandel Area
New Zealand - Token Circa

Reg. No: TMR - L7



Token could be from golf ball markers

Summary:

New Zealand
 Value: No Value
 Mint: Not recorded.

Discipline: Numismatics

More information

Tagged with: Produce/Shop tokens

Themes this item is part of: Numismatics & Philately

Primary Classification: Tokens

Secondary Classification: New Zealand

Tertiary Classification: Checks

Denomination: No Value

Inscriptions: (Edge) Plain
 (Obverse) Lakes (bird) Resort / Pauanui / New Zealand
 (Reverse) (Symbol) / Sporte / Leisure

Shape: Round

Size: 25.03 mm - 25.00 mm x 1.1 mm Thick

Material: Nickel & Single sided enamel

Weight: 3.8 grams

Issued By Lakes Resort Pauanui
 100 Augusta Drive Pauanui 3579



Lakes Resort Pauanui NZ - Token

Situated on the edge of the Coromandel Forest Park, to the east of Auckland, the Lakes Resort golf course was opened in 2004. The stunning 18-hole championship golf course sits within a residential community that also enjoys the use of other leisure facilities like a spa, swimming pools and tennis courts.

Such is the quality of the resort, it is one of only nine (along with the likes of Kauri Cliffs (/golf-course/kauri-cliffs) and Cape Kidnappers (/golf-course/cape-kidnappers)) to be included in the prestigious International Marketing and Promotional group called The Best of Golf New Zealand. The putting surfaces are amongst the best in the country, made from L93 Bent, a very strong, consistent grass developed in Georgia, USA.

The Puddicombe design team created the course (better known perhaps in their native Canada for work at Red Tail Landing in Edmonton) and they made a fine job of routing the course through the type of lush vegetation found only in natural wetland areas.

Golf at the Lakes is all that its name suggests. Ponds, creeks and waterfalls come into play at a good number of the holes – several on the outward half and all of the back nine, to be precise! Water is not the only hazard out on the course though, as a number of holes feature what are described as “beach bunkers” – mini versions of nearby Pauanui Beach!

A feature hole on the front nine is the 385-yard, par four 4th, called “Matata,” which doglegs slightly to the right. The tee shot must flirt with a large bunker at the bend in the fairway to secure the best angle of approach for the second shot. Two greenside sand traps then gather any pulled shots to the green. A wonderful boardwalk connects the green to the next tee, adding a unique ambiance to the course.

One of the best holes on the back nine is the 165-yard, par three, 10th (“Kawau”) which is played from an island tee in front of the clubhouse across water to a green on the far side of the lake with a bunker in front and behind the putting surface. It’s only the start of what many consider to be the best back nine in the country. The 12th to 17th holes, in particular, are really special as they dogleg around streams, native bush and white sand bunkers.

Grant Puddicombe, course architect, commented as follows:

“The design and construction of the golf course required a great degree of sensitivity towards the natural wetlands. The land itself is just above sea level and the main stream that flows through the golf course flows towards the sea during low tide and back towards the course during high tides. Water has become a main focus of the design as numerous lakes retain the mountain runoff prior to discharging into the stream. Construction of the golf course was very difficult due to limited grade in the wetland areas and required significant fill to give the play areas relief yet seamlessly blend into the natural surroundings.

The nature of the design is strategic with a variety of hazards placed at different angles from the multiple tees; this offers an interesting and enjoyable experience for all calibres of player. Each and every hole is unique and has its own memorable character and the players will be called upon to use every club in the bag. We believe the course will improve with age and will indeed stand the test of time.”

Check - New Zealand - Token Used Poker Chips as Advert Tokens

Reg No: - TMR - L8

Lakes Resort Pauanui - Green Poker Chip - Advert Token

Diameter 40 mm

Thickness 3.4mm



Lakes Resort Pauanui - Green Poker Chip - Advert Token (Sticker on casino chip)

Lakes Resort Pauanui - Black Poker Chip - Advert Token

Diameter 40 mm

Thickness 3.4mm



Lakes Resort Pauanui - Black Poker Chip - Advert Token (Sticker on casino chip)

Check - New Zealand Token Used Poker Chips as Advert Tokens

Reg No: - TMR - L9

Lakes Resort Pauanui - Blue Poker Chip - Advert Token

Diameter 40 mm

Thickness 3.4mm



Lakes Resort Pauanui - Blue Poker Chip - Advert Token (Sticker on casino chip)

Lakes Resort Pauanui - Red Poker Chip - Advert Token

Diameter 40 mm

Thickness 3.4mm



Lakes Resort Pauanui - Red Poker Chip - Advert Token (Sticker on casino chip)

Check - Palmerston North Golf Club. New Zealand - Token Circa

Reg. No: TMR - P30

Summary:

New Zealand

Value: No Value

Mint: Not recorded.

Discipline: Numismatics



Some tokens could be from golf ball markers.

More information

Tagged with: Produce/Shop tokens

Themes this item is part of: Numismatics & Philately Collection

Primary Classification: Tokens

Secondary Classification: New Zealand

Tertiary Classification: Checks

Denomination: No Value

Inscriptions: (Edge) Plain
(Obverse) (Lion) / (Shield) / Palmerstonnorthgolfclub
(Reverse) (Symbol) / Sparte / Leisure

Shape: Round

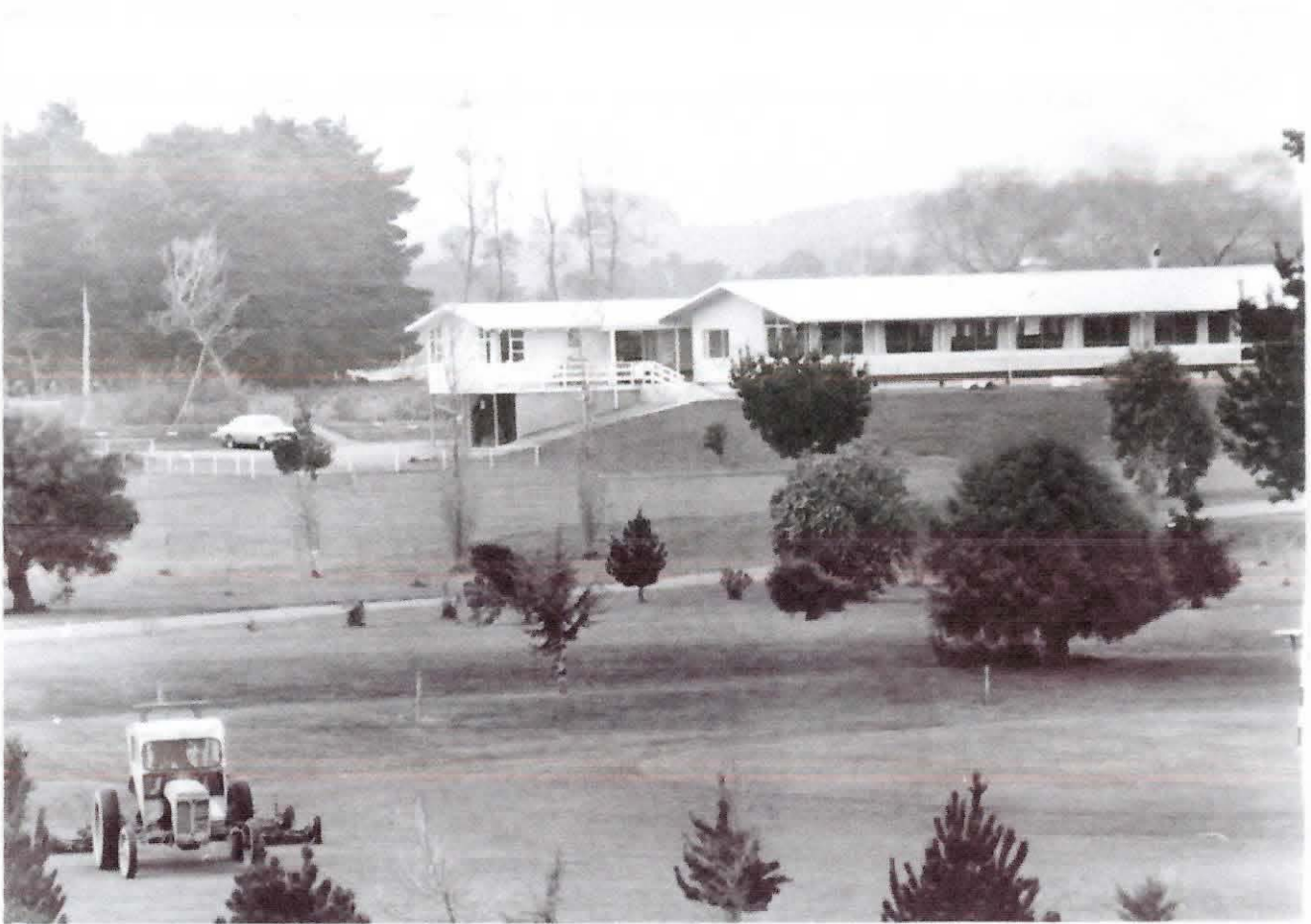
Size: 25.04 mm - 25.07 mm x 1.2 mm Thick

Material: Nickel & Single sided enamel

Weight: 3.8 grams

Issued By Palmerston North Golf Club
100 Brightwater Terrace,
Terrace End, Palmerston Nth.





Palmerston North Golf Course, Brightwater Terrace

The Palmerston North Golf Club is an 18 hole golf course. The Brightwater Terrace site, as in use today, was offered to the club in exchange for their links originally in Awatapu. In the early 1960s the Palmerston North City Council was looking to develop Awatapu for residential use and undertook to re-establish the course to the satisfaction of the Golf Club. The Club then shifted to this site in early 1964 and was officially opened 2 May 1964.



Palmerston North
Golf Club



Check -Borough Of Feilding (Manchester Block) New Zealand - Token Circa 1974

Reg. No: TMR - B16 Aluminium & Silver

Summary:

New Zealand

Value: No value(AD)

Mint: Not recorded.

Discipline: Numismatics

More information

Tagged with: Token / Centenary

Themes this item is part of: Numismatics & Philately Collection

Primary Classification: Tokens

Secondary Classification: New Zealand

Tertiary Classification: Checks

Denomination: No value

Inscriptions: (Edge) Plain
(Obverse) Borough Of Feilding / (shield) / County Of Oroua
(Reverse) 1874 / Manchester Block / Centenary / 100 / 1974

Shape: Round

Size: 35.11 mm 35.15 mm

Material: Aluminium & Silver

Weight: 6.5 grams & 21.6 grams

Issued By: Town of Feilding
Manawatu



The story behind Feilding, the small Manawatū town named after royalty



20 km north-west of Palmerston North. The town was laid out in 1874, the first township on the Manchester block developed by the London-based Emigrant and Colonist's Aid Corporation. In the early twentieth century it had the most important saleyards in the lower North Island. The establishment of Feilding Agricultural High School (1921) and New Zealand's first Young Farmers' Club (1927) marked the importance of farming in the community. But the 1920s to 1940s were uncertain years both for dairying and hill-country sheep farming. The town thrived again after the Second World War.

It was sited in a natural clearing and named after Colonel William Feilding. A director of the corporation, he had come to New Zealand and bought the land. Streets were named after other corporation personnel or New Zealand political figures.

Check - N.Z. Bred Racehorses New Zealand - Token Circa 1971

Reg. No: TMR - N77

Summary:

New Zealand
No value (AD)
Mint: not recorded.

Discipline: Numismatics

More information

Tagged with: Tokens / Medals

Themes this item is part of: Numismatics & Philately Collection

Primary Classification: Tokens

Secondary Classification: New Zealand

Tertiary Classification: Checks

Denomination: No value,

Inscriptions: (Edge) plain
(Obverse) Three / of the world's / greatest racehorses / NEW ZEALAND BRED / CARBINE / Musket / (horse and rider) / Mersey
(Reverse) Horses and Names (As shown)

Shape: Round

Size: 35.06 mm 35.12 mm

Material: Silver

Weight: 25.1 grams

Issued By: N.Z Racing Inc.
Only 125 made.



New Zealand has long been recognised as an ideal country for producing thoroughbreds, which thrive in temperate climates and on open pasture. This reputation grew through the shrewd judgement of the earliest breeders in selecting quality bloodlines from Australia and England.

Horses' birthdays

All racehorses have their official birthday on 1 August (or, in the northern hemisphere, on 1 January). July foals are officially classified as yearlings when they are actually less than a month old (unless there is proof the mare was not served before 1 September the previous year), so breeders ensure no foals are born too early. The dates fit normal breeding seasons and provide practical uniformity for races restricted to certain age groups. The New Zealand racing season also begins on 1 August. 1904 Grand National Steeplechase, becoming the first New Zealand-bred racehorse to win a major event in England. King Edward VII's own horse Ambush fell, and before the following year's race, the king bought Moifaa to run in his colours. Unfortunately Moifaa developed respiratory problems, fell in the 1905 event, and failed to win subsequently. He appeared at the king's funeral in 1910 – not, as has been claimed, as the riderless horse, but ridden by the king's friend, Major General John Brocklehurst.

Wellington

The first thoroughbred brought to New Zealand, Figaro, sired the first thoroughbred born in New Zealand, from an English mare imported in 1842. The foal, named Il Barbieri, was a good racehorse and in turn became a significant sire. Horses descended from Figaro made up some of the colonies of wild horses that later roamed in the greater Wellington region. Astute settlers and Māori picked out the best for racing and riding.

Nelson and Canterbury

In the 1840s and 1850s the hub of thoroughbred breeding shifted from Wellington to Nelson, with the arrival of several racing enthusiasts there. Henry Redwood, George Duppa and future premier Edward Stafford imported quality bloodstock. During the next decade Redwood established another large stable at Riccarton, reinforcing the gradual shift of thoroughbred strength to Canterbury. By the 1890s and 1900s, George Stead and Sir George Clifford were the leading owners and

Hawke's Bay and Auckland

At this time, Sir William Russell, John Ormond and Tom Lowry were prominent breeders in Hawke's Bay. One of the greatest mares bred in New Zealand, Desert Gold, was born at Okawa Stud, Hawke's Bay, in 1912. Auckland had also become an important centre, with large-scale breeding establishments. Sylvia Park in Mt Wellington was home to the influential English stallion Musket, sire of New Zealand's first undisputed champion, Carbine.

Check - Woolly Meadows Farmyard Limited. Rangiora New Zealand - Token Circa 1997 - 2010

Reg. No: TMR - W33

Summary:

New Zealand
No Value (AD)
Mint: not recorded.

Discipline: Numismatics

More information

Tagged with: Tokens
Themes this item is part of: Numismatics & Philately Collection

Primary Classification: Tokens

Secondary Classification: New Zealand

Tertiary Classification: Checks

Denomination: No value

Inscriptions: (Edge) Plain
(Obverse) Kia-Ora Greetings / (Kiwi) / (Fern) / New Zealand /
(coloured picture) Woolly Meadows / Rangiora / Farmyard
(Reverse) Blank

Shape: Round

Size: 31.97 mm- 32.01 mm

Material: Brass

Weight: 12.7 grams

Issued By: Woolly Meadows Farmyard
Rangiora, New Zealand



WOOLLY MEADOWS FARMYARD LIMITED

Company Number
871117

Status
Removed

Incorporation Date
18 September 1997

Dissolution Date
21 November 2010

Company Type
NZ Limited Company

Jurisdiction
[New Zealand](#)

Business Number
9429038021152

Registered Address

- Sterling Accountants Limited, 128 Riccarton Road, Riccarton, Christchurch
- 8041
- NZ

Inactive Directors / Officers

- [Geoffrey John TAYLOR](#), director, 18 Sep 1997-15 May 2000
- [Jennifer Anne KNOX](#), director, 18 Sep 1997-

WOOLLY MEADOWS FARMYARD LIMITED was registered as New Zealand Limited Company on 19 Sep 1997, registered at Sterling Accountants Limited, 128 Riccarton Road, Riccarton, Christchurch, 8041 , New Zealand. , and the status of this company is **Removed** now.

Woolly Meadows Farmyard Limited 's dissolution date is 22 Nov 2010 and it had been running for 13 years 2 months, and 3 days since its registered until dissolution.

Check - Exhibition Of Hunting. Wellington New Zealand - Token Circa 1978

Reg. No: TMR - E6

Summary:

New Zealand
No Value: (AD)
Mint: Unknown

Discipline: Numismatics

More information

Tagged with: Tokens

Themes this item is part of: Numismatics & Philately Collection

Primary Classification: Tokens

Secondary Classification: New Zealand

Tertiary Classification: Checks

Denomination: No value

Inscriptions: (Edge) Plain
(Obverse) Exhibition Of Hunting / (Deer) / Wellington 1978
(Reverse) New Zealand Deerstalkers Association / (Deer head)

Shape: Round

Size: 51.14 mm–51.17 mm

Material: Bronze

Weight: 53.3 grams

Issued By: Deerstalkers Association
Wellington. N.Z.

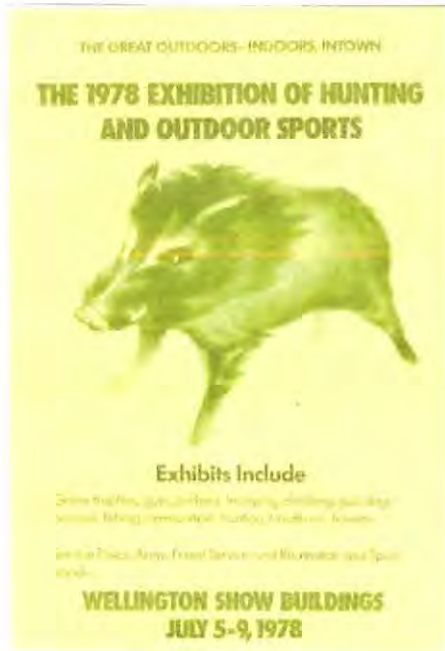




New Zealand Deerstalkers Association Inc



JOIN TO PROTECT YOUR HUNTING AND SHOOTING OPPORTUNITIES IN NEW ZEALAND



NZDA has been actively protecting and safeguarding hunters' rights and our big game animal herds in New Zealand since 1937.

We promote safe and ethical hunting.

Founded in 1937, the New Zealand Deerstalkers Association Incorporated (NZDA) represents the interests of New Zealand's hunters and shooters as a not-for-profit and non-government organisation (NGO).

Nationally, we are the voice of New Zealand's hunters

Locally, we are your hunting club

Wellington Branch of the New Zealand Deerstalkers' Association Inc.

We are Wellington City's hunting club. The New Zealand Deerstalkers' Association Inc, Wellington Branch was founded in 1950 and officially incorporated in 1959 as a branch of the NZDA. The NZDA was founded in 1939 for the advancement of hunting, bushcraft, shooting and the like.

The NZDA advocates for recreational hunters. We are focused on hunting and bringing hunters together. As a Wellington branch member you will meet other local hunters and have lots of opportunities to discuss hunting and learn from experienced members. Great friendships are formed with like-minded hunters.

As a branch we provide facilities to members: club rooms, rifle range and backcountry huts. We officially Douglas Score heads. We have regular speakers at club nights, hold annual competitions (photographic, literature, film and trophy heads), and provide information about topics and issues that affect hunters both locally and nationally.

If you are interested to learn more, please get in touch or come to a [club night](#).

Check - NEW ZEALAND FIRST Steam Loco PILGRIM New Zealand - Token Circa 1863

Reg. No: TMR - N78

Summary:

New Zealand

Value: No value (AD)

Mint: Not recorded.

Discipline: Numismatics

More information

Tagged with: Token

Themes this item is part of: Numismatics & Philately Collection

Primary Classification: Tokens

Secondary Classification: New Zealand

Tertiary Classification: Checks

Denomination: No value

Inscriptions: (Edge) Plain
(Obverse) New Zealand First / "PILGRIM" / (train) / 1863 / Steam Locomotive
(Reverse) Last Steam Locomotive / (train) / In the North Island JA 1257

Shape: Round

Size: 35.11 mm 35.06 mm

Material: Copper

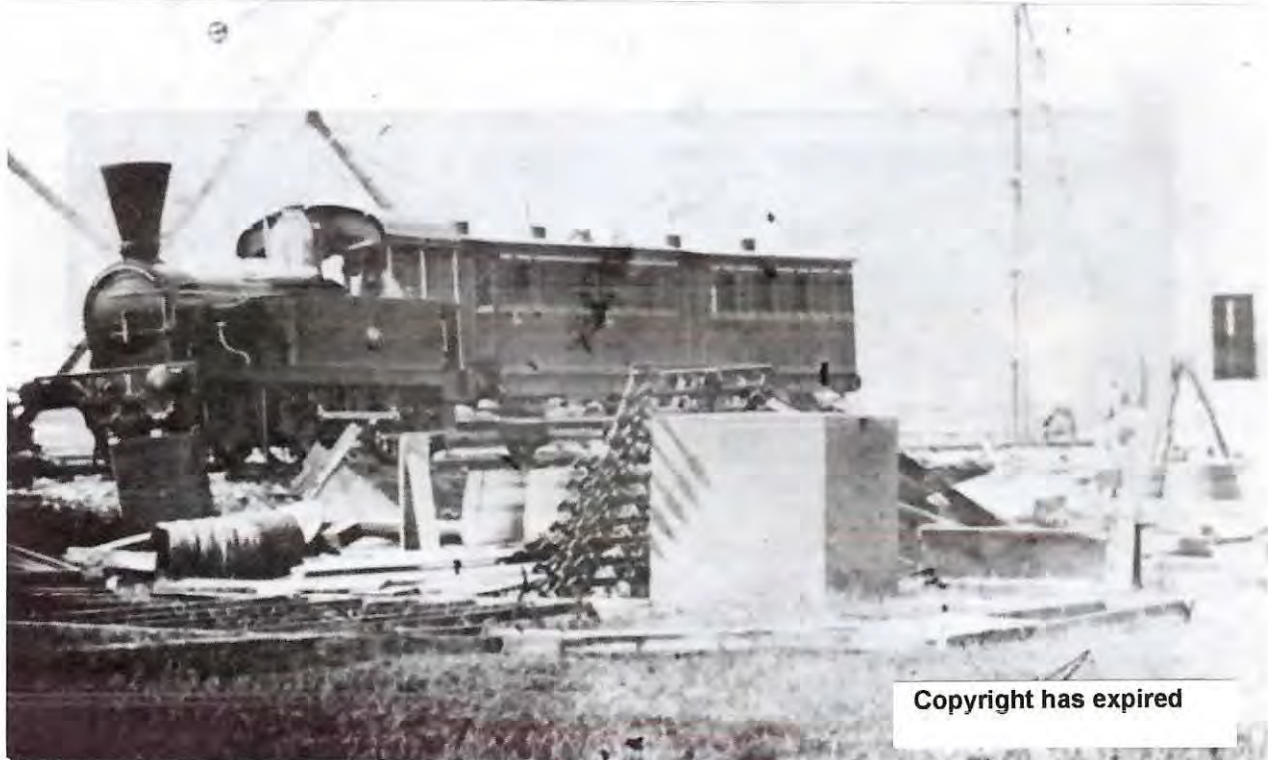
Weight: 21.3 grams

Issued By: New Zealand Railway
Ferrymead & Hillside



The first train to run in New Zealand, Canterbury Railways No. 1, steam locomotive "Pilgrim" ATLIB 335682.png

1001



Description English: The first steam locomotive to run in New Zealand was Canterbury Railways No. 1, built in 1862 by Slaughter, Gruning and Co., Bristol, named "Pilgrim". First journey made on 1 December 1863, hauling the first train over part of the line between Christchurch and Ferrymead (near Heathcote). Photograph taken by an unidentified photographer. This film negative is a copy taken from the Godber Album Vol 109, p104 (PA1-q-102)

Date circa 1870s

Source <https://tiaki.natlib.govt.nz/#details=ecatalogue.335682>

The NZR **J^A class** were a type of 4-8-2 steam locomotive used on the New Zealand railway network. The class was built in two batches, the first batch was built at Dunedin's Hillside Workshops between 1946 and 1956 and the second batch by the North British Locomotive Works in 1951. To distinguish between the batches, locomotives are identified by their maker.

The J^A class was the last class of steam locomotive built both for and by New Zealand Railways (NZR). Hillside built J^A 1274 was the last steam locomotive ever built by NZR, and the North British J^As were the last steam locomotives built overseas for the NZR.

NZR J^A class



J^A 1271 with excursion consist on approach to Ahuriri on 14 February 2003.

Check - New Zealand Steam Locomotives. Class Ka New Zealand - Token Circa 1939

Reg. No: TMR - N79

Summary:

New Zealand

Value: No value (AD)

Mint: Not recorded.

Discipline: Numismatics

More information

Tagged with: Token

Themes this item is part of: Numismatics & Philately Collection

Primary Classification: Tokens

Secondary Classification: New Zealand

Tertiary Classification: Checks

Denomination: No value

Inscriptions: (Edge) Plain
(Obverse) Steam Locomotives / 1939 (train) / Class "Ka" / Designed and / Built In New Zealand
(Reverse) Class / "Wab" / (train on trestle bridge)

Shape: Round

Size: 35.07 mm

Material: Copper

Weight: 22.0 grams

Issued By: New Zealand Railway
Hutt Workshops & Hillside



NZR K^A class

The NZR K^A class of 1939 was a class of mixed traffic 4-8-4 steam locomotives that operated on New Zealand's railway network. They were built after the success of the K class to meet the increasing traffic demands of the New Zealand Railways Department. The locomotives first appeared with distinctive streamlining, mainly to hide their ACFI feedwater heater systems.

History

Following the success of the K class, there was a need for more similar locomotives in the North Island. The new locomotives incorporated a number of improvements, including a re-designed plate frame to eliminate the cracking issues the K class were experiencing; roller bearings on all wheels; hydrostatic lubrication throughout; and the inclusion of the ACFI feedwater heater system as pioneered by K 919. As the ACFI equipment was criticised for its aesthetic appearance, it was obscured with shrouding fitted to both the K^A class and contemporary K^B class.

NZR W^{AB} class

The NZR W^{AB} class locomotives were steam locomotives designed, built and used by New Zealand Railways Department (NZR). Their wheel arrangement is described by the Whyte notation 4-6-4T. The locomotives were designed by NZR chief draughtsman S.H. Jenkinson as tank versions of the A^B class 4-6-2 Pacific locomotive. Initially, the locomotives were separated into two classes, designated W^{AB} for mainline work and W^S for suburban work.

The remaining locomotives were kept in service until the last days of steam, operating short-haul mainline freight services and fast suburban services, particularly in Auckland. W^{AB} 794 was sold to the Ohai Railway Board in Southland for running heavy coal trains. The locomotives were progressively withdrawn in the 1960s.

NZR K^A class



K^A 942 in Kirwee with a excursion to Arthurs Pass in August 2014.

NZR W^{AB} class



W^{AB} 794 on its first excursion after restoration, with the Capital Connection rolling stock, on 31 August 2003.

Introduction

The first locomotives, W^S 686 and W^{AB} 687, were built from the boilers, frames and engine units initially destined for A^B 666 and A^B 667. These entered service in 1917, W^S 686 in Wellington and W^{AB} 687 at Taumarunui in the central North Island. Fourteen W^S class locomotives were built between 1917 and 1925: one at Addington workshops (686), five at A & G Price Ltd, Thames (799-803) and eight at Hillside workshops, Dunedin (764-771). All the W^S class were converted to W^{AB} in 1932-4. Sixteen W^{AB} class were built between 1918 and 1926: one at Addington (687), 12 at Hillside (786-795) and three at A&G Price (796-798). Between 1947 and 1957 11 W^{AB} class were converted to A^B class.

Check - Pauanui Sports And Recreation Club**New Zealand - Token****Circa Unkown**

Reg. No: TMR - P31

See other "Pauanui" pages.

Summary:

New Zealand

Value: No Value

Mint: Not recorded.

Discipline: Numismatics**More information****Tagged with:** Produce/Shop tokens**Themes this item is part of:** Numismatics & Philately**Primary Classification:** Tokens**Secondary Classification:** New Zealand**Tertiary Classification:** Checks**Denomination:** No Value**Inscriptions:** (Edge) Plain
(Obverse) (pine tree) / Pauanui / Sports And / Recreation Club /
Incorporated
(Reverse) Blank**Shape:** Round (uniface)**Size:** 25.34 mm - 25.38 mm x 1.8 mm Thick**Material:** Nickel & Enameled**Weight:** 5.3 grams**Issued By** Pauanui Sports & Recreation Club
31 Sheppard Avenue, Pauanui, Waikato 3112

Pauanui Sports & Recreation Club

31 Sheppard Avenue
 Pauanui
 Thames-Coromandel
 Waikato 3112

Club facilities include:

- Two 9 hole Golf Courses,
- Tennis courts, members courts Sheppard Ave.
- 2 large bowling greens,
- Recreation centre,
- Annex/activity centre,
- Mini Golf,
- Fully Licensed Bar,
- Licensed Restaurant,
- Childrens indoor and outdoor play areas,
- Gaming Machines,
- TAB,
- Snooker Tables,
- Darts,
- Big Screen for live entertainment



Check -World Federation Of Great Towers New Zealand - Token Circa (after) 1997

Reg. No: TMR - W34

Summary:

New Zealand

No value(AD)

Mint: not recorded.

Discipline: Numismatics

More information

Tagged with: Souvenir / Tokens

Themes this item is part of: Numismatics & Philately Collection

Primary Classification: Tokens

Secondary Classification: New Zealand

Tertiary Classification: Checks

Denomination: No value

Inscriptions: (Edge) Plain
(Obverse)World Federation / (picture) Federation Des / Grandes
Tours Du Monde / Of Great Towers
(Reverse) New Zealand / (map) / Souvenir Coin

Shape: Round

Size: 30.40 mm--30.42 mm

Material: Brass

Weight: 11.8 grams

Issued By: Auckland
For:- Federation Des Grandes



TRADEMARK DETAILS

Owner: **World Federation of Great Towers**

Type: **Word**

Description: **FEDERATIONS DES GRANDES TOURS DU MONDE WORLD FEDERATION OF GREAT TOWERS**

FEDERATIONS DES GRANDES TOURS DU MONDE WORLD FEDERATION OF GREAT TOWERS with trademark number 742507 was lodged on 28/08/1997 and has a status of Registered/Protected - Renewal Due. The applicant/owner of the trademark is registered as World Federation of Great Towers. They used the trademark attorney firm MacMillan Trade Marks Attorneys to file this trademark.

Australian trademark 742507 is one of over a million that we feature on IP in Australia which covers the entire spectrum of trademarks in Australia. World Federation of Great Towers is also one of thousands of applicants we've analysed. We also understand who are the most prolific inventors in Australia with details on all the trademarks attributed to individuals.

Because we have insights into all the attorney firms that have been used across Australia including which specific trademark attorney worked on each trademark, we have access to unique analytics on the best attorney to use if you have specific trademark needs.

Filing trademarks is a time consuming and expensive exercise which is why care needs to be taken ensuring that you're working with the right individual.

Because we're an independent third party we can give you unbiased insights and recommendations on the right partner to choose. For more information contact us



Sky Tower (Auckland)

The **Sky Tower** is a telecommunications and observation tower in Auckland, New Zealand. Located at the corner of Victoria and Federal Streets within the city's CBD, it is 328 metres (1,076 ft) tall, as measured from ground level to the top of the mast, making it the tallest freestanding structure in the Southern Hemisphere and the 27th tallest tower in the world. It has become an iconic landmark in Auckland's skyline due to its height and unique design.

The tower is part of the SkyCity Auckland casino complex, originally built in 1994–1997 for Harrah's Entertainment.

Several upper levels are accessible to the public, attracting an average of 1,150 visitors per day (over 415,000 per year).

Public facilities

The Sky Tower has several upper levels that are accessible to the public.

- Level 50: Sky Cafe
- Level 51: Main Observation Deck
- Level 52: Orbit 360° Dining
- Level 53: The Sugar Club restaurant, SkyWalk and SkyJump
- Level 60: Sky Deck

The upper portion of the tower contains two restaurants and a cafe—including New Zealand's only revolving restaurant, located 190 m (620 ft) from the ground, which turns 360 degrees every hour. There is also a brasserie-style buffet located one floor above the main observatory level. It has three observation decks at different heights, each providing 360-degree views of the city. The main observation level at 186 m (610 ft) has 38 mm (1.5 in) thick glass sections of flooring giving a view straight to the ground. The top observation deck labeled "Skydeck" sits just below the main antenna at 220 m (720 ft) and gives views of up to 82 km (51 mi) in the distance.

The tower also features the "SkyJump", a 192-metre (630 ft) jump from the observation deck, during which a jumper can reach up to 85 km/h (53 mph). The jump is guide-cable-controlled to prevent jumpers from colliding with the tower in case of wind gusts. Climbs into the antenna mast portion (300 m or 980 ft heights) are also possible for tour groups, as is a walk around the exterior.

Sky Tower



The tower within the SkyCity Auckland complex

Check - Auckland Racing Club New Zealand - Token Circa 1929

Reg. No: TMR - A38

Summary:

New Zealand
Value: No value (AD)
Mint: Not recorded.

Discipline: Numismatics

More information

Tagged with: Tokens

Themes this item is part of: Numismatics & Philately Collection

Primary Classification: Tokens

Secondary Classification: New Zealand

Tertiary Classification: Checks

Denomination: Admission Token



Inscriptions: (Edge) Plain
(Obverse) Auckland / Racing / Club / (N.Z. Map)
(Reverse) (Racehorse / Ellerslie Racecourse)

Shape: Round

Size: 29.44 mm--29.42 mm

Material: Brass

Weight: 7.0 grams

Issued By: Auckland Racing Club
Ellerslie



Ellerslie Racecourse

Ellerslie Racecourse is the main racecourse in Auckland, New Zealand, for thoroughbred racehorses. It is an undulating, grass circuit in the suburb of Ellerslie, with a circumference of just under 1,900 metres. Racing is conducted in a clockwise (right-handed) direction.



The main stand at Ellerslie Racecourse

History

Horses have raced at Ellerslie since 1857 when Robert Graham hosted a race meeting on his property, on the site which is now Ellerslie Racecourse. The Auckland Racing club then purchased thirty-six hectares of land from Graham in 1872 on which the course is situated.

The first race meeting of the Auckland Racing Club was held at Ellerslie on 25 May 1874. At this time the racecourse was a considerable distance outside the city and it took Aucklanders up to several hours to get to the course by carriage.

A "platform" station, Ellerslie Racecourse Platform was opened in January 1874. Many went by train, although with the demand created by the event, as late as in 1910 they often had to travel in open cattle trucks because there were not enough normal coaches available for the demand of the extra services.



Ellerslie Racecourse circa 1910 in a photograph by Albert Percy Godber

A publication compiled by E.G. Sutherland, held in Sir George Grey Special Collections called Auckland Cup history makes note of the importance of the aesthetic appeal of Ellerslie Racecourse.

"It seems worthy of mention that by making Ellerslie attractive the Auckland Racing Club has added to the popularity of the sport. Ellerslie's attractive outlook has been partly responsible for bringing thousands of visiting racing patrons within its borders to witness the best class of thoroughbreds in action. It's well laid out floral beds, ponds and large variety of choice trees and palms have drawn kudos from Royalty, Governors, Viceroys, tourists and visitors from all parts of the world."

Even Queen Elizabeth visited Ellerslie Racecourse during the royal visit in 1953/4.

Ellerslie Racecourse was the location of the first automatic totalisator, designed by George Julius and installed in 1913.

During the 20th century, Ellerslie Racecourse provided plants for Kingseat Hospital.



Grounds circa 1910

Check - Christchurch Casino, Victoria Street, Ch Ch New Zealand - Token Circa 1994

Reg. No: TMR - C57

Summary:

New Zealand

Value: No value (AD)

Mint: not recorded.

Discipline: Numismatics

More information

Tagged with: Casino / Tokens

Themes this item is part of: Numismatics & Philately Collection

Primary Classification: Tokens

Secondary Classification: New Zealand

Tertiary Classification: Checks

Denomination: No value

Inscriptions:
(Edge) Plain
(Obverse) 1994 Christchurch Casino 1994 N.Z.'s First 1994
(Reverse) 1994 Christchurch Casino 1994 N.Z.'s First 1994

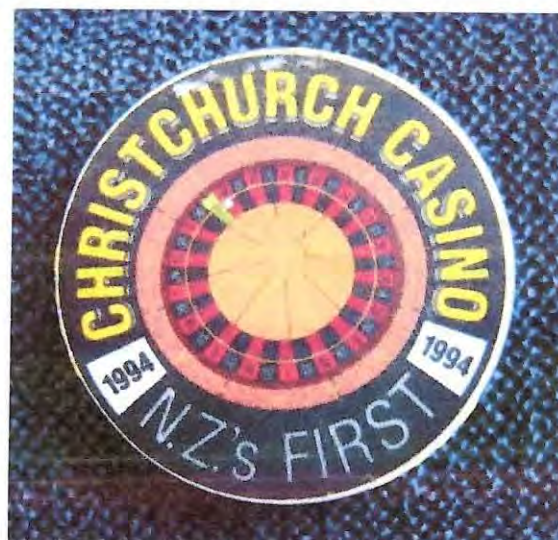
Shape: Round,

Size: 39.27 mm - 39.24 mm

Material: Resin Plastic

Weight: 10.5 grams

Issued By: CHRISTCHURCH CASINO



Check - Christchurch Casino, Victoria Street, Ch Ch New Zealand - Token Circa Unknown

Reg. No: TMR - C58

(White wording blue background)

Summary:

New Zealand

Value: No value (AD)

Mint: not recorded.

Discipline: Numismatics**See other Ch Ch Casino pages.****More information****Tagged with:** Casino / Tokens**Themes this item is part of:** Numismatics & Philately Collection**Primary Classification:** Tokens**Secondary Classification:** New Zealand**Tertiary Classification:** Checks**Denomination:** No value

Inscriptions: (Edge) Plain
(Obverse) 06 Christchurch / CCC / \$5 / Casino
(Reverse) 06 Christchurch / CCC / \$5 / Casino

Shape: Round,**Size:** ?? mm**Material:** Plastic**Weight:** ?? grams**Issued By:** CHRISTCHURCH CASINO

See other pages:- Christchurch Casino

Check - Kupe's Carwash. Whitiang. Coromandel Peninsula New Zealand - Token Circa Founded 2018

Reg. No. TMR - K14

Summary:

New Zealand

No value (AD)

Mint: Not known

Discipline: Numismatics

More information

Tagged with: Tokens

Themes this item is part of: Numismatics & Philately Collection

Primary Classification: Tokens

Secondary Classification: New Zealand

Tertiary Classification: Checks

Denomination: No value

Inscriptions: (Edge) Plain
(Obverse) (Canoe) / Kupe's Carwash / Whitiang
(Reverse) (Canoe) / Kupe's Carwash / Whitiang

Shape: Round

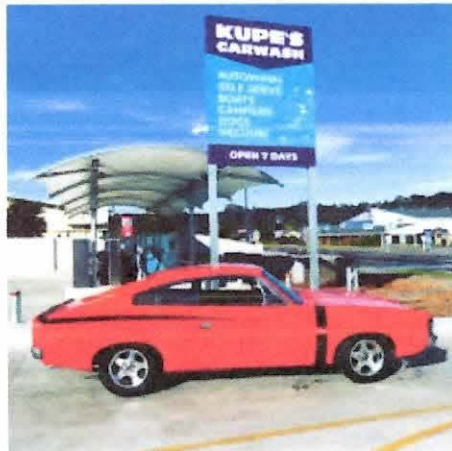
Size:

Material:

Weight:

Issued By: Kupe's Carwash





**9 Joan Gaskell Drive,
Whitiang
Coromandel Peninsula**

Founded in 2018

Check - Royal Vist To New Zealand & Australia New Zealand - Token Circa 1970

Reg. No: TMR - R36

Summary:

New Zealand

Value: No denomination (AD)

Mint: Not recorded.

Discipline: Numismatics

More information

Tagged with: Tokens / Medal

Themes this item is part of: Numismatics & Philately Collection

Primary Classification: Tokens

Secondary Classification: New Zealand

Tertiary Classification: Checks

Denomination: No value

Inscriptions: (Edge) PLAIN
(Obverse) Royal Visit To New Zealand March 1970 & Australia.
April 1970 / (Royal Flag)
(Reverse) The Historical Medal Society Of Australia & New Zealand

Shape: Round

Size: 38.51 mm

Material: Copper

Weight: 32.6 grams

Issued By: The Historical Society
Of New Zealand & Australia



Check - The Auckland Coin Club. 1st Anniversary New Zealand - Token Circa 1967

Reg. No: TMR - A39

Summary:

New Zealand

Value:-No value (AD)

Mint: not recorded.

Discipline: Numismatics

More information

Tagged with: Token

Themes this item is part of: Numismatics & Philately
Collection

Primary Classification: Tokens

Secondary Classification: New Zealand

Tertiary Classification: Checks

Denomination: No value

Inscriptions: (Edge) Plain
(Obverse) The Auckland Coin Club / (ship) / 1st Anniversary / 1967
(Reverse) Kiwi's / Shield / Advance

Shape: Round

Size: 38.21 mm

Material: Copper

Weight: 32.1 grams

Issued By: The Auckland Coin Club



Check -4th World Veteran Games Christchurch N.Z. New Zealand - Token Circa 1981

Reg. No: TMR - F12 (fourth)

Summary:

New Zealand

No Value (AD)

Mint: not recorded.

Discipline: Numismatics

More information

Tagged with: Tokens / Awards

Themes this item is part of: Numismatics & Philately Collection

Primary Classification: Tokens

Secondary Classification: New Zealand

Tertiary Classification: Checks

Denomination: No value

Inscriptions: (Edge) Plain
(Obverse) 4th World Veteran Games Christchurch New Zealand 1981
(Reverse) Plain (Fern around)

Shape: Round

Size: 50.73 mm

Material: Copper

Weight: 69.0 grams

Issued By: World Veteran Games
Christchurch, New Zealand



World Masters Athletics Championships

The **World Masters Athletics Championships** are the biennial championships for masters athletics events held under the auspices of World Masters Athletics, formerly called the World Association of Veteran Athletes, for athletes over the age of 35 years.

The outdoor championships began in Toronto, Canada on August 11, 1975 and have continued in odd numbered years. In July 2011, World Masters Athletics changed their constitution to hold Championships in even numbered years, starting in 2016. Perth, Western Australia was selected to hold the first even year meet. Later Road Racing Championships called Non-Stadia Championships were added, starting in Birmingham, England August 29–30, 1992. Indoor Championships in even numbered years started Sindelfingen, Germany, March 10–14, 2004.

Edition	Year	City	Country	Venue	Date
1	1975	Toronto	 Canada	Centennial Park Stadium	11–16 August
2	1977	Gothenburg	 Sweden	Slottskogsvallen	8–13 August
3	1979	Hanover	 West Germany		27 July–2 August
4	1981	Christchurch	 New Zealand	Queen Elizabeth II Park	7–14 January
5	1983	San Juan	 Puerto Rico		23–30 September
6	1985	Rome	 Italy		22–30 July
7	1987	Melbourne	 Australia		29 November–6 December
8	1989	Eugene	 United States	Hayward Field	27 July–6 August
9	1991	Turku	 Finland	Paavo Nurmi Stadium	18–28 July
10	1993	Miyazaki	 Japan	Miyazaki Athletic Stadium	7–17 October
11	1995	Buffalo	 United States	University at Buffalo Stadium	13–23 July

Check - Supreme Grand Royal Arch Chapter. N.Z. New Zealand - Token Circa 1992

Reg. No: TMR - S22

Summary:

New Zealand
No Value (AD)
Mint: Not known

Discipline: Numismatics

More information

Tagged with: Tokens (100yrs)

Themes this item is part of: Numismatics & Philately Collection

Primary Classification: Tokens

Secondary Classification: New Zealand

Tertiary Classification: Checks

Denomination: No value

Inscriptions: (Edge) Plain
(Obverse) Supreme Grand Royal Arch Chapter Of New Zealand / 1892-1992 / HKT-HAB-SKI / Triangle
(Reverse) New Zealand / 1892 / Fern / 1992

Shape: Round

Size: 41.04 mm – 41.10 mm

Material: Copper

Weight: 35.7 grams

Issued By: The Craft And Royal Arch Masonry of N.Z.



About Royal Arch Masonry – Supreme Grand Royal Arch Chapter of New Zealand



The Degree of Mark Master Mason

Conducted in a Lodge of Mark Master Masons
Under the control of a Worshipful Mark Master



The Degree of Excellent Master

Conducted in a Lodge of Excellent Masters
Under the control of a Worshipful Excellent Master



The Cryptic Degrees

Conducted in Councils of
Select Master
Royal Master
Most Excellent Master
Super-Excellent Master
Under the control of a Thrice Illustrious Master



THE CRAFT AND ROYAL ARCH MASONRY

Your qualification as a Master Mason enables you to join a Royal Arch Chapter.

The Grand Lodge of New Zealand has a special relationship with the Supreme Grand Royal Arch Chapter of New Zealand. Rule 71 of the Book of Constitution recognizes six degrees as Pure Ancient Freemasonry and the degrees of Mark Master Mason, Excellent Master and the Royal Arch are considered an extension of Craft Masonry.

The Grand Master is the head of Craft Masonry in New Zealand.

All business in a Craft Lodge, except Degree Work, is conducted in the First, or Entered Apprentice Degree and a Candidate, once admitted a Freemason, may attend all regular meetings. Lodge members are called Brethren.

A Craft Lodge, governed by a Master and his two Wardens forms part of a District, governed by a District Grand Master. Districts are grouped into Divisions, governed by a Divisional Grand Master.

The Supreme Grand Royal Arch Chapter of New Zealand controls the Degrees of Mark Master Mason, Excellent Master, the Royal Arch, the four Degrees of the Cryptic Council, the Royal Ark Mariner Degree, and the Red Cross of Babylon Degrees.

The First Grand Principal is the head of Royal Arch Masonry in New Zealand.

The Mark Master Mason and Excellent Master Degrees are conducted in Lodges working under the Charter of a Royal Arch Chapter and members are called Brethren. The Royal Arch Degree is conducted in a Chapter of Royal Arch Masons and members are called Companions.

The business of a Royal Arch Chapter is conducted in the Royal Arch Degree and, therefore, a Candidate cannot attend until he has been "exalted" to the Royal Arch Degree.

Three Principals jointly govern a Chapter and each Chapter is part of a District governed by a Grand Superintendent. District are grouped into three Divisions overseen by a Grand Principal. The First Grand Principal presides over Supreme Grand Chapter.

The structure of the degrees under the Supreme Grand Chapter of New Zealand with some of their symbols are shown in the following table.

1020

Dunedin Casino

The **Dunedin Casino** opened in 1999 in the city of Dunedin in New Zealand. It is located in The Exchange, 0.5 kilometres (0.31 mi) south of the city centre, in the Southern Cross Hotel building. Originally named the Grand Hotel was built in 1883 by Italian architect Louis Boldini. The interior finishing showcases the Victorian taste in classical architecture.

The Gambling Commission suspended the casino's license for two days in 2006, after it was found to have let a woman gamble \$6.6 million over a three-year period.

The Dunedin Casinos Charitable Trust has granted a total of \$62,900 to 45 recipients in the November 2019. Major recipients include the Cancer Society and Otago Community Hospice.

NZ - "Medal" - 2000 Dunedin Casino Millennium

Reg. No. TMR - D12



New Zealand
Dunedin Casino
2000 Millennium \$5 Chip

Diameter:- 40mm
Material:- Plastic
Macmaster No:- 2000/CAS/2
Limited Edition:- 1000???

NZ - "Medal" - 2011 Dndn Casino Year of the Rabbit

Reg. No. TMR - D13



New Zealand
Dunedin Casino
2011 Year of the Rabbit \$5 Chip

Size:- "Diameter" 40mm
Material:- Plastic & Metal
Macmaster No:- not listed, but would be 2011/CAS/2
Limited Edition:- ???

NZ - "Medal" - 2013 Dndn Casino Year of the Snake Reg. No. TMR - D14



New Zealand
Dunedin Casino
2013 Year of the Snake \$5 Chip

Size:- "Diameter" 40mm
Material:- Plastic & Metal
Macmaster No:- 2013/CAS/2
Limited Edition:- ???

NZ - "Medal" - 2015 Dndn Casino Year of the Sheep Reg.No. TMR - D15



New Zealand
Dunedin Casino
20145Year of the Sheep \$5 Chip

Size:- "Diameter" 40mm
Material:- Plastic & Metal
Macmaster No:- not numbered
Limited Edition:- ???

**Check -Tairua Country Club, And Golf N.Z.
New Zealand - Token Circa Opened March 26th 1966**

Reg. No: TMR - T41

Summary:

New Zealand
No Value (AD)
Mint: not recorded.

Discipline: Numismatics

More information

Tagged with: Tokens
Themes this item is part of: Numismatics & Philately Collection

Primary Classification: Tokens

Secondary Classification: New Zealand

Tertiary Classification: Checks

Denomination: No value

Inscriptions: (Edge) Plain
(Obverse)Tairua Country Club / (Tree) / N.Z.
(Reverse) Circle

Shape: Round

Size: 23.8 mm
3.4 mm Thick

Material:

Weight: 8.38 grams

Issued By: Taiua Country Club
283 Main Road
Coromandel Peninsula



ABOUT TAIRUA GOLF CLUB



The Tairua Golf Club was formed in 1965 when a group of enthusiasts met to consider making a golf course and club available in Tairua. A founding committee was formed and with much volunteer labour a nine-hole course was developed on a Lands & Survey block at Hikuai some 10 miles from Tairua. The club opened for play on Easter Sunday March 26th 1966.

In 1970 the club relocated to its present site in Tairua township and established a new nine-hole course, which was ready for play by Christmas of that year. Further holes were added and the course was extended to twelve holes by 1974. In 1973 the club changed its name from the Tairua Golf Club to the Tairua Country Club in order to better recognise the three sporting codes which were to be catered for on the site – golf, bowls and eventually croquet. In 1994 the golf course was extended to a full 18 holes and the club now provides an 18-hole golf course and 4 lawn croquet green.

Tairua is a picturesque seaside village on the Eastern Seaboard of the Coromandel Peninsula and is only 1 ½ to 2 hour drive from Auckland or the Waikato. From Mt Paku (at the entrance to the Tairua Harbour) there are magic views along the Coastline, Tairua Ocean Beach, Tairua Harbour, across to Pauanui, The Coromandel Ranges and out to the Alderman Islands, Slipper Island and beyond. Being centrally located on the Coromandel Peninsula we are only the proverbial “hop, step and jump” to Whitianga, Cooks Beach, Ha Hei, Hot Water Beach, Cathedral Cove, Whangamata and a little further away Matarangi, Kuotuna and Coromandel. The Tairua Country Club is located on the Main Highway and almost in the centre of town. We are only a short walk to the town centre and only minutes away for those golfers who wish to walk play their Golf or Croquet.

We welcome all – members and visitors alike to join with us at the Tairua Golf and Country Club to play your sport and enjoy the fellowship afterwards in our friendly club rooms

Check - Wairakei International Golf Course

New Zealand - Token Circa, Opened Feb. 1970

Reg. No: TMR - W35

Summary:

New Zealand

No Value (AD)

Mint: not recorded.

Discipline: Numismatics

More information

Tagged with: Tokens
Themes this item is part of: Numismatics & Philately Collection

Primary Classification: Tokens

Secondary Classification: New Zealand

Tertiary Classification: Checks

Denomination: No value

Inscriptions: (Edge) Plain
 (Obverse) Wairakei International Golf Course / (Bird) New Zealand
 (Reverse) Bird on branch / Wairakei

Shape: Round

Size:

Material:

Weight: grams

Issued By: Wairakei Golf
 Wairakei Nth Island



WAIRAKEI

golf+sanctuary



Wairakei is a small settlement, and geothermal area a few kilometres north of Taupo, in the centre of the North Island of New Zealand, on the Waikato River. It is part of the Taupo Volcanic Zone and features several natural geysers, hot pools, boiling mud pools, and the Wairakei Power Station, a major geothermal electric power generating station.

The station was the second large-scale geothermal facility worldwide, and was commissioned in 1958. It was listed in the book *70 Wonders Of The Modern World* published in 2000 by Reader's Digest to record *The Eventful 20th Century*.



The Craters of the Moon, a steamfield close by, created by the use of geothermal energy changing the underground pressure situation.

1026

Check - Lake Coleridge Power Station. 75th Jubilee New Zealand - Token Circa 1989

Reg. No: TMR - L13

Summary:

New Zealand
No value (AD)
Mint: not recorded.

Discipline: Numismatics

More information

Tagged with: Tokens / Souvenir Coins

Themes this item is part of: Numismatics & Philately Collection

Primary Classification: Tokens

Secondary Classification: New Zealand

Tertiary Classification: Checks

Denomination: No Value

Inscriptions: (Edge) Plain
(Obverse) South Island / (A picture) / Hydro Group
(Reverse) Lake Coleridge Power Station / (A picture) / 75th Jubilee

Shape: Round

Size: 46.00 mm

Material: Silver plated copper

Weight: ?? grams

Issued By: Govt .Department Shop



Lake Coleridge

Lake Coleridge is located in inland Canterbury, in New Zealand's South Island. Located 35 kilometres (22 mi) to the northwest of Methven, it has a surface area of 47 square kilometres (18 sq mi). The lake is situated in an over-deepened valley formed by a glacier over 20,000 years ago in the Pleistocene era. It currently has no natural outflows. There is a little settlement at the lake.



The lake is located to the north of the Rakaia River, and is the site of one of the country's earliest hydroelectric schemes, completed in 1914 and built mainly to supply power to Christchurch. The project makes use of the difference in altitude between the lake and river (the lake is 150 metres higher). Both the Harper and Wilberforce Rivers have had some of their flow diverted into the lake, with up to 100% of the Harper's flow diverted for the Lake Coleridge Power Station.

The Lake was named by the chief surveyor of the Canterbury Association, Joseph Thomas, on a sketch map prepared in early 1849. It commemorates Edward Coleridge and William Coleridge, who were first cousins and both nephews of Samuel Taylor Coleridge, two early members of the Canterbury Association. Two further members of the Coleridge family joined the Canterbury Association in June 1851, i.e. after the lake had been named: John Taylor Coleridge (a brother of Edward), and John Coleridge, one of John Taylor's sons.

The lake was the epicentre for the 6.5 magnitude earthquake that struck on 26 June 1946. Retrieved, March 2017

Lake Coleridge



Location	Selwyn District, Canterbury region, South Island
Coordinates	43°17'S 171°30'E
Primary inflows	Harper, Wilberforce
Basin countries	New Zealand
Surface area	47 km ² (18 sq mi)
Max. depth	200 m (660 ft)



Check - RNSNZ 50th Jubilee. Turnbull Library**New Zealand - Token Circa 1981**

Reg. No: TMR - R37

Royal Title Granted 1947

Summary:

New Zealand

Value: No value (AD)

Mint: Not recorded

Discipline: Numismatics**More information**

Tagged with:	Commemorate tokens
Themes this item is part of:	Numismatics & Philately Collection
Primary Classification:	Tokens
Secondary Classification:	New Zealand
Tertiary Classification:	Checks
Denomination:	No value
Inscriptions:	(Edge) Plain (Obverse) New Zealand / Numismatic Society / Founded 21 st July 1931 (Reverse) (picture Library) / Alexander Turnbull Library / 1 st Meeting Place / Of The Society
Shape:	Round
Size:	49.00 mm
Material:	Copper
Weight:	W??? grams
Issued By:	RNSNZ, Wellington



Maker unknown

Turnbull Library. 1st meeting place of the Society. R. N. S. N. Z. 1981.

Names

Berry, Reginald George James, 1906-1979

Previous owner

Royal

Numismatic

Society of New

Zealand

Subject

Alexander

Turnbull Library

Subject

Places

Bowen Street

Record types

Curios

Medals

Subjects

Libraries - New

Zealand -

Wellington

Region

Anniversaries

Date:

1931 - 1981

By:

Berry, Reginald George James, 1906-1979

Ref:

Curios-017-006

Description:

A depiction of A. H. Turnbull's house, Bowen Street, the first premises of the Alexander Turnbull Library and the first meeting place of the Royal Numismatic Society in Wellington in 1931. Issued to commemorate the 50th jubilee of the Society, 1931-1981.

Other Titles - Royal Numismatic Society of New Zealand

Quantity: 1 curio(s).

Physical Description: Copper medallion, 49 mm (diameter)

1030

Millennium Medal Collection - The Internet

Reg No; TMR - M31 (medal 14)



Features

Country * Tokens * (New Zealand - Souvenir Tokens)

Type Token

Year 1999

Currency Souvenir Tokens

Weight 8.12 g

Diameter 28 mm

Thickness 2 mm

Shape Round

Orientation Medal alignment ↑

Commemorative issue

The Millennium Medal Collection

Obverse

Lettering:

DEVELOPMENT OF THE INTERNET
1989- & THE WORLD WIDE WEB
1993

Reverse

Lettering:

THE MILLENNIUM
MEDAL COLLECTION

Edge

Smooth

Transport

Reg No; TMR - M31 (medal 6)



Features

Country	* Tokens * (New Zealand - Souvenir Tokens)
Type	Token
Year	1999
Currency	Souvenir Tokens
Composition	Nickel plated steel
Diameter	27 mm
Thickness	2 mm
Shape	Round
Orientation	Medal alignment ↑↑

Commemorative issue

The Millennium Medal Collection

Obverse

A car, plane and steam train.

Lettering:

TRANSPORT-WRIGHT-STEPHENSON-FORD

1712 -

1908

Reverse

Lettering:

THE MILLENNIUM

MEDAL COLLECTION

Edge

Smooth

1032 Millennium Medal Collection - Edmund Hillary

Reg No; TMR - M31 (medal 19)



Features

Country * Tokens * (New Zealand - Souvenir Tokens)

Type Token

Year 1999

Currency Souvenir Tokens

Composition Nickel plated steel

Weight 8.12 g

Diameter 28 mm

Thickness 2 mm

Shape Round

Orientation Medal alignment ↑

Obverse

Edmund Hillary and Tenzing

Lettering: Norgay.

SIR EDMUND HILLARY-

1953 -CONQUERED

MT. EVEREST

Reverse

Lettering:

THE MILLENNIUM

MEDAL COLLECTION

Commemorative issue

The Millennium Medal Collection

Edge

Smooth



THE MILLENNIUM MEDAL COLLECTION

*21 exclusive Millennium medals to collect and display
in your commemorative album - an exclusive offer
available only at Woolworths and Big Fresh.*

woolworths **BigFresh**



9 400597 027991

These tokens / medals were only available from "WOOLWORTH & BIGFRESH" (N.Z.) in 1999. They were a "Millennium Medal Collection" from around the world. But were advertised as "New Zealand Souvenir Tokens." The three shown here are only a sample of the 21 tokens that were available.

**The collection album states.
(63 Billion seconds) In 24 Pages.**

**Check - Harley-Davidson Auckland
New Zealand - Token Circa Unknown**

Reg. No: TMR - H22AK

9 Different Auckland NZ Harley Davidson Poker Chips



Sizes vary between 40.07 mm to 40.33 mm. Never below 40.00 mm.
Weight can be between 11.4 grams to 11.7 grams. Never below 11.0 grams.

Inside token is added metal, to give it weight.

Auckland NZ Harley Davidson



9 Different Auckland NZ Harley Davidson Poker Chips

Check - Harley-Davidson. Christchurch New Zealand - Token Circa Unknown

Reg. No: TMR - H23CH

10 Different Christchurch NZ Harley Davidson Poker Chips



Sizes vary between 40.07 mm to 40.33 mm. Never below 40.00 mm
Weight can be between 11.4 grams to 11.7 grams. Never below 11.0 grams.

Inside token is added metal, to give it weight.

Christchurch NZ Harley Davidson



10 Different Christchurch NZ Harley Davidson Poker Chips

**Check - Harley-Davidson. Feilding
New Zealand - Token Circa Unknown**

Reg. No: TMR - H24FD

10 Different Feilding NZ Harley Davidson Poker Chips



Sizes vary between 40.07 mm to 40.33 mm. never below 40.00 mm

Weight can be between 11.4 grams to 11.7 grams. Never below 11.0 grams.

Inside token is added metal, to give it weight.

Feilding NZ Harley Davidson



10 Different Feilding NZ Harley Davidson Poker Chips

2014 Year of the Horse \$5 Christchurch Casino Chip

Check - Christchurch Casino, Victoria Street, Ch Ch New Zealand - Token Circa 2014

Reg. No: TMR - C59

Summary:

New Zealand

Value: No value (AD)

Mint: not recorded.

Discipline: Numismatics**More information****Tagged with:** Casino / Tokens**Themes this item is part of:** Numismatics & Philately Collection**Primary Classification:** Tokens**Secondary Classification:** New Zealand**Tertiary Classification:** Checks**Denomination:** No value

Inscriptions: (Edge) Plain
 (Obverse) Christchurch / (horse) / \$5 / Year Of The Horse / 2014 / Casino
 (Reverse) Christchurch / \$5 / Year Of The Horse / 2014 / Casino

Shape: Round**Size:****Material:** Plastic**Weight:** ?? grams**Issued By:** CHRISTCHURCH CASINO

Check - Christchurch Casino, Victoria Street, Ch Ch New Zealand - Token Circa 2009

Reg. No: TMR - C60

Summary:

New Zealand

Value: No value (AD)

Mint: not recorded.

Discipline: Numismatics

More information

Tagged with: Casino / Tokens

Themes this item is part of: Numismatics & Philately Collection

Primary Classification: Tokens

Secondary Classification: New Zealand

Tertiary Classification: Checks

Denomination: No value

Inscriptions: (Edge) Plain
(Obverse) Christchurch / (Ox) / \$5 / Year Of The Ox / 2009 / Casino
(Reverse) Christchurch / \$5 / Year Of The Ox / 2009 / Casino

Shape: Round

Size:

Material: Plastic

Weight: ?? grams

Issued By: CHRISTCHURCH CASINO



Check - Tauranga Numismatic 5th Anniversary New Zealand - Token Circa 1970

Reg. No: TMR - T42

Summary:

New Zealand
No denomination (AD)
Mint:

Discipline: Numismatics

More information

Tagged with: Token

Themes this item is part of: Numismatics & Philately

Primary Classification: Tokens

Secondary Classification: New Zealand

Tertiary Classification: Checks

Denomination: No value

Inscriptions: (Edge) Plain
(Obverse) Tauranga Numismatic / (picture) / Society inc
(Reverse) Fern / Scroll / 1970

Shape: Round

Size:

Material:

Weight:

Issued By: Tauranga Numismatic Society
Wesley Church Centre
92-100 13th Ave. Tauranga City



Check - Laundromat. The washhouse**New Zealand - Token Circa 2020's**

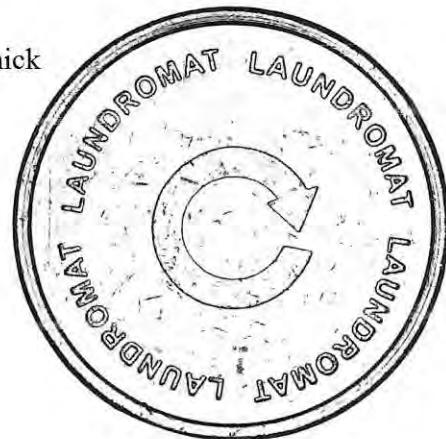
Reg. No: TMR - L10

Summary:

New Zealand

Value: \$1.00

Mint: Not recorded.

Discipline: Numismatics**More information****Tagged with:** Shop tokens/machine**Themes this item is part of:** Numismatics & Philately Collection**Primary Classification:** Tokens**Secondary Classification:** New Zealand**Tertiary Classification:** Checks**Denomination:** \$1.00**Inscriptions:** (Edge) Plain
(Obverse) Laundromat / the washhouse / Laundromat
(Reverse) Laundromat Laundromat /Semi Circle Arrow /
Laundromat Laundromat**Shape:** Round**Size:** 24.10 mm -24.08 mm 2.00 mm thick**Material:** Nickel**Weight:** 6.5 grams**Issued By** Levin Laundromat
191 Bath St. Levin, 5510 N.Z.

Levin Laundromat

1041



Other Locations

Avondale, 303 Rosebank Rd

Panmure, 9 Basin View Lane

Whanganui, 92 Puriri St.

Whangarei, 81 Paramount Plaza Shopping Centre.

eftpos:- No coins.....no problem. You can use your eftpos card to get some tokens. Tokens can be purchased from the vending machine and the back of the store, using your debit card (no credit cards). Tokens are dispensed in \$5, \$10, or \$20 bundles.
1 Token = \$1

WASHING MACHINE PRICES

Small Wash from \$3.00
Large Wash from \$7.00

DRYER PRICES

Small Dryer \$1.00 for 6
Large Dryer mins
\$1.00 for 5
mins

Machines take \$1, \$2 and/or tokens

1 Token = \$1.00

Check - New Plymouth. Exhibition & Carnival New Zealand - Token Circa 1904-5

Reg. No: TMR - N80

December 1904 -January 1905

Summary:

New Zealand
No Value (AD)
Mint: not recorded.

Discipline: Numismatics

More information

Tagged with: Tokens / Souvenirs / Novelty Items

Themes this item is part of: Numismatics & Philately Collection

Primary Classification: Tokens

Secondary Classification: New Zealand

Tertiary Classification: Checks

Denomination: No value

Inscriptions: (Edge) Plain
(Obverse) Exhibition & Carnival / (Mt. Egmont) / New Plymouth / 1904
(Reverse) Exhibition Souvenir / (Wreath)

Shape: Round

Size:

Material: Aluminium

Weight:

Issued By: NEW PLYMOUTH
Carnival and Exhibition of Art and Industries



Another one from the Exhibition, could be many more.



N.Z. NEW PLYMOUTH EXHIBITION MEDALET COIN 1904

NEW PLYMOUTH EXHIBITION

AXEMEN'S CARNIVAL.

A SUCCESSFUL GATHERING.

(BY OUR SPECIAL REPORTER.)

NEW PLYMOUTH, December 30.

The Axemen's Carnival, held under the auspices of the New Zealand Axemen's Association, took place in the exhibition grounds this afternoon in the presence of a large attendance of the public. Before 1 p.m. there were over 1500 present, and in the afternoon this number was doubled. Mr F. E. Hardy, secretary of the Axemen's Association, acted as supervisor, Messrs Stanners and Wolf judges, Mr A. Moore assistant-secretary. Mr A. Hansen started, and Mr J. Bennett was timekeeper. The weather, which was slightly moist in the early part of the day, cleared up before 1 o'clock. Among the competing axemen were the Tasmanian (Goold), Decgan, Furlong, and Buckingham (the Victorian), the champion of the world (Gus Blanc), and the New South Wales champions (G. Terry and E. R. Terry). Results:

Handicap Chop of 18in standing blocks. First prize £10, second £4, third £1.—Pretty, 10sec, 1; Goold, 23sec, 2; Berg, 15sec, 3. All started. A close finish, many thinking Goold had won by a stroke. The logs were tough. Time, 2min 22sec.

Maiden Handicap Chop of 15in blocks.—J. Brophy 1, F. Johansen 2, C. M'Asay 3. Time, 1min 45sec.

Maiden Double-handed Sawing Handicap.—Berkahan and Beck 1, Blanc and Decgan 2, Phillips and White 3. Time, 18 1-5sec.

New Plymouth Carnival and Exhibition of Art and Industries.

PROGRAMME
GRAND

Chopping Contest,

IN EXHIBITION GROUND,
On Friday, 30th December,
1904.

Under the Auspices of the New Zealand Axemen's Association.

PRICE - - SIXPENCE.

Joseph Hooker & Co., General Printers, New Plymouth.

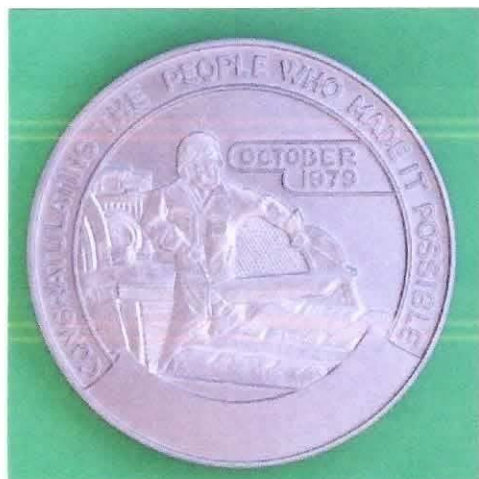
1044

**The Tiwai Smelter.
The first tokens were called
"The Bluff Smelter"**

Reg:- NZC&BN - T27+1

Rd -- Aluminium --47.00 mm

1979 NZAS One Million Tonne



Reg:- NZC&BN -T27+2

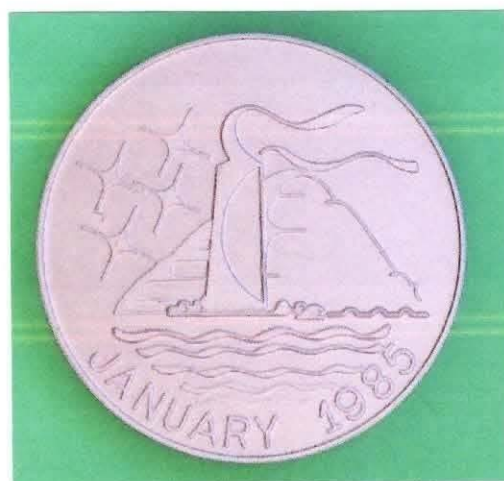
Rd -- Alum -- 47.00 mm

**Stage IV Official Opening
November 1982**

Reg:- NZC&BN --T27+3

Rd - Alum - 47 mm

**Two Millionth Tonne
1985**



Reg:- NZC&BN - T27+4

**Rd - Alum - 47 mm
January 1993
Four Millionth Tonne**

**See "The Bluff Smelter"
For more info.**



Aoraki (Mount Cook) from Hooker Glacier Lake

Please use for any notes etc.

Check - Air New Zealand, New Zealand - Token. Circa 1996 -Present (Wording ?)

Reg. No: TMR - A40

(See other Air N.Z.)

Summary:

New Zealand

Value: No denomination (AD)

Mint: Not recorded.

Discipline: Numismatics**More information**

Tagged with: Tokens

Themes this item is part of: Numismatics & Philately

Primary Classification: Tokens

Secondary Classification: New Zealand

Tertiary Classification: Checks

Denomination: No value

Inscriptions: (Edge) Plain
(Obverse) (N. Z. Air Symbol) Koru
(Reverse) Blank

Shape: Round (Uniface)

Size:

Material: C&N

Weight: ?? grams

Issued By: Air New Zealand
Auckland



Air New Zealand Limited is the flag carrier airline of New Zealand. Based in Auckland, the airline operates scheduled passenger flights to 20 domestic and 32 international destinations in 20 countries, primarily around and within the Pacific Rim. The airline has been a member of the Star Alliance since 1999.

Air New Zealand originated in 1940 as Tasman Empire Airways Limited (TEAL), a company operating trans-Tasman flights between New Zealand and Australia. TEAL became wholly owned by the New Zealand Government in 1965, whereupon it was renamed Air New Zealand. The airline served international routes until 1978, when the government merged it and the domestic New Zealand National Airways Corporation (NAC) into a single airline under the Air New Zealand name. Air New Zealand was privatised in 1989, but returned to majority government ownership in 2001 after near bankruptcy due to a failed tie up with Australian carrier Ansett Australia. In the 2017 financial year to June, Air New Zealand carried 15.95 million passengers.



The original logo was borrowed from the company's predecessor, Tasman Empire Airlines Limited. The design featured a stylized bird in flight.

Since 1965, the Air New Zealand logo has been modified around five times.

HISTORY



The symbol that became the highlight of the design consisted of two parts combining a straight bar and a curve. The lettering "Air New Zealand" in lowercase glyphs was placed to the right.



Check - Napier Rotary Pathway, Art Deco New Zealand - Token

Circa 2004

Reg. No: TMR - N81

Summary:

New Zealand

No value (AD)

Mint: not recorded.

Discipline: Numismatics

More information

Tagged with: Souvenir Coin / Token

Themes this item is part of: Numismatics & Philately Collection

Primary Classification: Tokens

Secondary Classification: New Zealand

Tertiary Classification: Checks

Denomination: No denomination

Inscriptions: (Edge) Plain
(Obverse) ARTDECO / (picture) / Napier New Zealand
(Reverse) Napier Community Project / Picture) / Rotary Pathway

Shape: Round

Size:

Material: Bi Metal

Weight:

Issued By: Napier City Council
On sale from a stall holder, on opening day.





NAPIER
CITY COUNCIL
Te Kāunihera o Ahuriri

Rotary Pathway

Te kaupapa whakamoemoe ara hīkoinga a Rotary



Napier's Pathway

Encompassing the city and taking in some of the Bay's most spectacular scenery, Napier's Pathway is a great recreational asset for walkers, joggers, cyclists, baby buggies, roller bladers, wheelchairs and mobility scooters. The Pathway is very popular with locals and it is attracting growing numbers of visitors keen to take in Napier's many attractions on foot or by bike.

The Napier City Council's BIKE IT strategy was launched in 2002 with the formation of the Rotary Pathway Trust - a partnership involving the Council and the combined Rotary Clubs of Napier. The trust has been a major contributor in donating towards the cost of developing the network. The first stage was the construction of the path from Bay View to Westshore in 2003, and that was followed a year later with the Marine Parade path from Bluff Hill to Awatoto.

Easily-accessed and well-formed routes extend along the coast from Bay View to Westshore, skirt around Napier's bustling original port to the Iron Pot, track the Ahuriri foreshore, continue round Bluff Hill to the Marine Parade foreshore and head south to Awatoto. They also take in parts of the central city, flank Prebensen Drive, loop around Park Island, thread through Greenmeadows and Taradale and track waterways traversing the city.

Where possible, the Pathway has evolved to incorporate existing paths, hard beach frontages and riverbanks. Generally, the paths are a generous 2.5-3.5m wide. Well-formed, they are laid with a variety of surfacing - most often concrete but also timbered boardwalks and roading material - and are suited to all weather conditions.

1050

TMR - N82+1,2,3,

N.Z 1882 INDUSTRIAL EXHIBITION CHRISTCHURCH

Metal ;Silver

22mm approx

Ch-Ch





Ch-Ch





Ch-Ch ?





The above items are for information only.

New Zealand International Exhibition, Hagley Park, Christchurch



New Zealand International Exhibition, Hagley Park, Christchurch
[1882]

The 1882 Exhibition was a private venture organised by the Frenchman Jules Joubert and the Englishman R.E.N. Twopeny. Temporary buildings were erected in Hagley Park to house the exhibits that had been gathered from various countries. The Exhibition ran for 14 weeks and attracted crowds of 226,000 between April and July 1882. Many of the art works were sold to local collectors. The main building is shown with a hansom cab outside

New Zealand International Exhibition, 1882



This scene of the interior of the main building at the 1882 New Zealand International Exhibition in Christchurch shows the classical style of the structure. It was a temporary building designed by Thomas Stoddart Lambert, a local architect and city councillor. The exhibition was located on a 1.8-hectare site in Hagley Park. Although more than 200,000 people visited in its 14-week season, the exhibition lost money.

1052

Check - Prince MacDonal. Riviera Principality New Zealand - Token Circa 1996

Reg. No: TMR - P32

Summary:

New Zealand
Two Dollars (AD)
Mint:

Discipline: Numismatics

More information

Tagged with: Tokens / Coins

Themes this item is part of: Numismatics & Philately

Primary Classification: Tokens

Secondary Classification: New Zealand

Tertiary Classification: Checks

Denomination: \$2.00

Inscriptions: (Edge) Plain
(Obverse) Prince MacDonal * Riviera Principality / 1996
(Reverse) The Smallest Country In The World / crown / TWO Dollars

Shape: Round

Size: 29.20 mm - 29.12 mm
3.43 mm Thick

Material: Brass

Weight: 17.7 grams

Issued By: Riviera Principality
Morgans Road, RD3 Marlborough N.Z.



RIVIERA PRINCIPALITY

1053

Description

It was founded in 1996 in Marlborough, a region located in the northeast of the South Island of New Zealand. It was established with the intention of creating the N.Z. equivalent of Australia's Hutt River Province Principality. The ambitious principality comprised a market centre, boutique brewery, wine shop, conference centre and tavern. However, the Riviera Principality no longer exists as such, having failed to overcome a number of obstacles in the way of Prince MacDonald's ambitious project. The coinage issued by the short-lived Principality is very scarce and it is not easy to obtain.



The Smallest Country in the World

Morgans Road, Riviera. RD3 Marlborough New Zealand

Telephone 03 578 1863 Fax 03 578 1844

1996 Issue

**Head of State and Commander
in Chief. Was "His Royal
Highness Prince MacDonald"
aka Macky Neame**

The Riviera Principality was a short-lived state that was in existence from 1996 until 1998, when it ceased to exist, due to bankruptcy.

The Riviera Principality was located in the Marlborough region near Blenheim at the top of New Zealand's South Island.

Some of the coins have turned up, but very few notes have ever turned up - making them extremely rare.

These are the first plastic banknotes that were ever put into circulation anywhere in New Zealand.