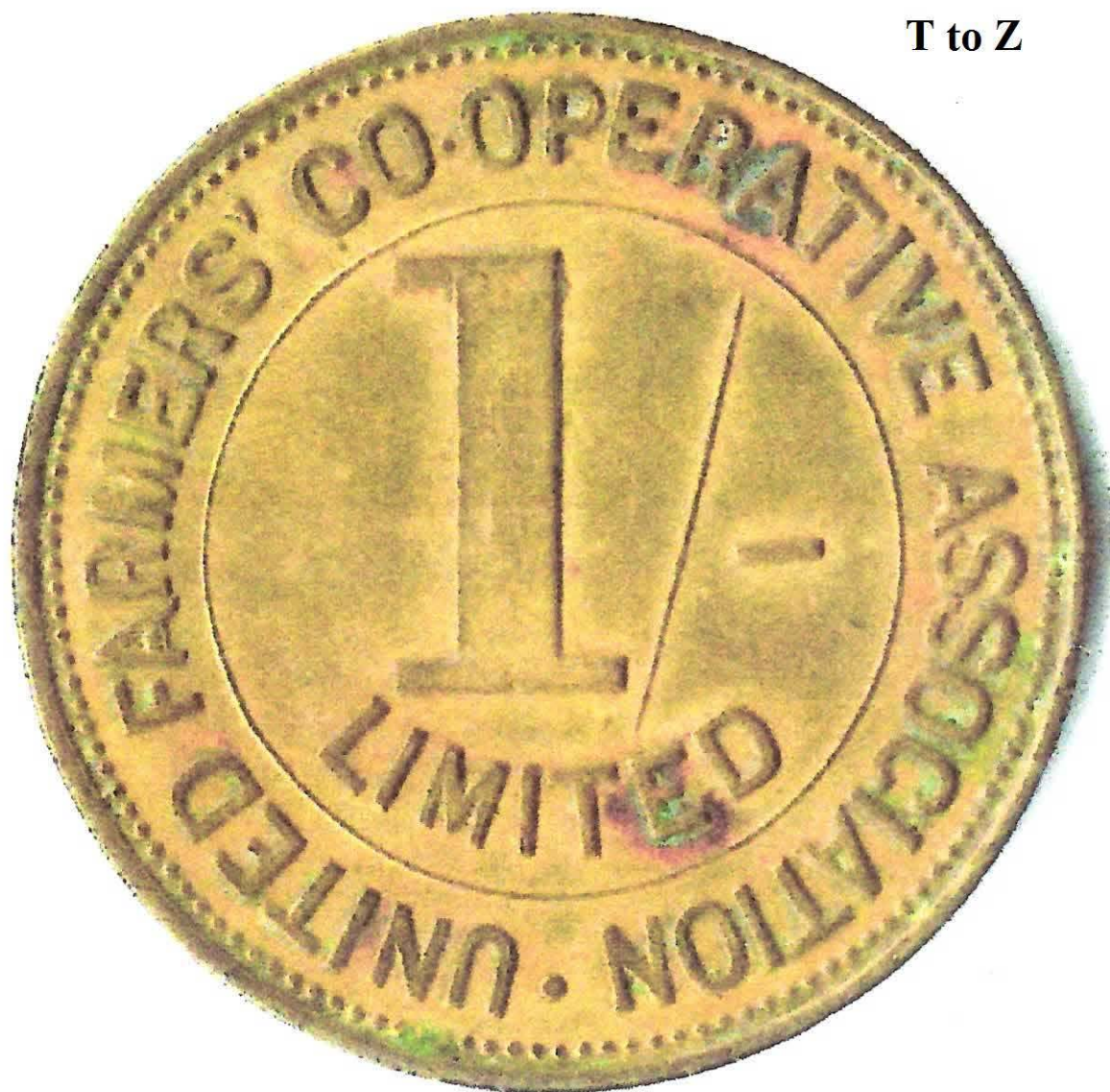


NEW ZEALAND

Checks, Discount & Special Purpose Tokens

PART FOUR

T to Z



Terence M. Roker

This manuscript is unpublished.

No permission has been sought from copyright holders for the reproduction of any of the photographs or illustrations which have been used throughout this manuscript.

This copy has been printed by the author for no financial gain whatsoever, with the intention that it is to be used for research purposes only.

The author wishes to disclaim any responsibility for any person who subsequently makes copies of this manuscript and uses them in such a way that violates copyright law.

TMR - #'s	TOKENS & INFORMATION	PAGE #
	Front Cover Part Four T to Z	i
	Copyright	ii
	Contents	iii
	Contents	iv
	Contents	v
	Contents	vi
TMR – T1 Token	Tattersalls Stables New Plymouth 4d Token	759
TMR – T2 Token	Tattersalls Stables New Plymouth 3d Token	760
T1 & T2 Notes	Tattersalls Stables New Plymouth (notes)	761
TMR – T3 Token	Tauranga Harbour Bridge. 1988 Token	762
T3 Notes	Tauranga Harbour Bridge. 1988 (notes)	763
TMR – T4 Token	Team New Zealand. America's Cup Victory 1995 Token	764
T4 Notes	Team New Zealand. America's Cup Victory 1995 (notes)	765
TMR – T5 Token	The Bluff Smelter. NZAS Token	766
T5 Notes	The Bluff Smelter. NZAS (notes 1)	767
T5 Notes	The Bluff Smelter. NZAS (notes 2)	768
TMR – T6 Token	The Co-op Dairy. Otago (Milk Can) Token	769
T6 Notes	The Co-op Dairy. Otago (notes)	770
TMR – T7 Token	The New Zealand Police. Centennial Token	771
TMR – T8 Token	The Numismatic Society of New Zealand. (60 years) Token	772
T8 Notes	The Numismatic Society of New Zealand. (60 years) (notes)	773
TMR – T9 Token	The Tail-Waggers Club of N.Z. #712 Token	774
TMR – T10 Token	The Tail-Waggers Club of N.Z. #865 Token	775
T9 & T10 Notes	The Tail-Waggers Club of N.Z. (notes 1)	776
T9 & T10 Notes	The Tail-Waggers Club of N.Z. (notes 2)	777
TMR – T11 Token	The Taranaki Farmers Company Token	778
T11 Notes	The Taranaki Farmers Company (notes)	779
TMR – T12 Token	The Toggery Dunedin 1/- Token	780
T12 Notes	The Toggery Dunedin 1/- (notes)	781
TMR – T13 Token	The Transalpine. Greymouth. Token	782
T13 Notes	The Transalpine. Greymouth. (notes)	783
TMR – T14 Token	The Whitehead & Hoag Co. (129) Token	784
T14 & T15 Notes	The Whitehead & Hoag Co. (notes)	785
TMR – T15 Token	The Whitehead & Hoag Co. (261) Token	786
TMR – T16 Token	Thorbecke's Smoking Bear. Token	787
T16 Notes	Thorbecke's Smoking Bear. (notes)	788
TMR – T17 Token	Thorbecke's Smoking Bear. Token	789
T17 Notes	Thorbecke's Smoking Bear. (notes)	790
T16 & T17 Notes	Thorbecke's Smoking Bear. (Some other info)	791
TMR – T18 Token	Timaru, Freemasons. For Bravery. Token	792
T18 Notes	Timaru, Freemasons. For Bravery. (notes)	793
TMR – T19 Token	Timaru Post Timaru Token	794

T19 Notes	Timaru Post Timaru (notes)	795
TMR – T20 Token	Timeout. Game Token. (Nickel) Token	796
T20 Notes	Time Out. Arcade (notes)	797
TMR – T21 Token	Time Out Leisure Centre. NZ (GA1ME) Token	798
TMR – T22 Token	Time Out Leisure Centre. NZ (Game token) Token	799
TMR – T23 Token	Time Out Leisure Centre. NZ (Time Out) Token	800
TMR – T24 Token	Time Out Leisure Centre. NZ (GA1ME) Token	801
TMR – T25 Token	Time Zone. NZ Token	802
T25 Notes	Time Zone. NZ (notes 1)	803
T25 Notes	Time Zone. NZ (notes 2)	804
TMR – T26 Token	Tip Top Bread (1) Wellington Token	805
TMR – T27 Token	Tip Top Bread (2) Wellington Token	806
TMR – T28 Token	Tip Top Bread (3) Wellington Token	807
T26 to T28 Notes	Tip Top Bread Wellington (notes)	808
TMR – T29 Token	TJ's Car Wash. Auckland Token	809
T29 Notes	TJ's Car Wash. Auckland (notes)	810
TMR – T30 Token	Travel – Safe NZ Token	811
TMR – T31 Token	Tremaine Car Wash. Palmerston Nth. Token	812
T31 Notes	Tremaine Car Wash. Palmerston Nth. (notes)	813
TMR – T32 Token	Troopship, No 5 N.Z. Souvenir. Token	814
T32 Notes	Troopship, No 5 N.Z. Souvenir. (notes)	815
TMR – T33 Token	Trott, Claude. N. Z. Army Tag. Token	816
T33 Notes	Trott, Claude. N. Z. Army Tag.(notes)	817
TMR – T34 Token	TSF Token	818
TMR – T35 Token	Tucker, F.W. Christchurch Token	819
T35 Notes	Tucker, F.W. Christchurch (notes)	820
TMR – T36 Token	Tui Mangatainoka Token	821
T36 Notes	Tui Mangatainoka (notes)	822
TMR – U1 Token	Union Airways of N.Z. Ltd. Token	823
U1 Notes	Union Airways of N.Z. Ltd. (notes 1)	824
U1 Notes	Union Airways of N.Z. Ltd. (notes 2)	825
U1 Notes	Union Airways of N.Z. Ltd. (notes 3)	826
TMR – U2 Token	United Farmers' Co-operative 40/- Token	827
TMR – U3 Token	United Farmers' Co-operative 20/- Token	828
TMR – U4 Token	United Farmers' Co-operative 10/- Token	829
TMR – U5 Token	United Farmers' Co-operative 5/- Token	830
TMR – U6 Token	United Farmers' Co-operative 2/6 Token	831
TMR – U7 Token	United Farmers' Co-operative 2/- Token	832
TMR – U8 Token	United Farmers' Co-operative 1/- Token	833
U2 to U8 Notes	United Farmers' Co-operative (notes 1)	834
U2 to U8 Notes	United Farmers' Co-operative (notes 2)	835
TMR – V1 Token	Vesta Batteries Wellington (you pay, brass) Token	836
TMR – V2 Token	Vesta Batteries Wellington (you pay, copper) Token	837
TMR – V3 Token	Vesta Batteries Wellington (pig's head and tail, brass) Token	838
TMR – V4 Token	Vesta Batteries Wellington (pig's head and tail, copper) Token	839
V1 to V4 Notes	Vesta Batteries Wellington (notes 1)	840

V1 to V4 Notes	Vesta Batteries Wellington (notes 2)	841
V1 to V4 Notes	Vesta Batteries Wellington (notes 3)	842
V1 to V4 Notes	Vesta Batteries Wellington (notes 4)	843
TMR – W1 Token	Waikato Beer Hamilton East Token	844
W1 Notes	Waikato Beer Hamilton East (history; notes 1)	845
W1 Notes	Waikato Beer Hamilton East (history; notes 2)	846
W1 Notes	Waikato Beer Hamilton East (history; notes 3)	847
W1 Notes	Waikato Beer Hamilton East (history; notes 4)	848
W1 Notes	Waikato Beer Hamilton East (history; notes 5)	849
TMR – W2 Token	Wairarapa Farmers' Co-operative 20/- Token	850
TMR – W3 Token	Wairarapa Farmers' Co-operative 10/- Token	851
TMR – W4 Token	Wairarapa Farmers' Co-operative 5/- Token	852
TMR – W5 Token	Wairarapa Farmers' Co-operative 2/6 Token	853
TMR – W6 Token	Wairarapa Farmers' Co-operative 2/- Token	854
TMR – W7 Token	Wairarapa Farmers' Co-operative 1/- Token	855
W2 to W7 Notes	Wairarapa Farmers' Co-operative (notes 1)	856
W2 to W7 Notes	Wairarapa Farmers' Co-operative (notes 2)	857
TMR – W8 Token	Wairarapa, Masonic Chapter No 10 Token	858
W8 Notes	Wairarapa, Masonic Chapter No 10 (notes)	859
TMR – W9 Token	Wairongoa Lunch Rooms Token	860
W9 Notes	Wairongoa Lunch Rooms (notes)	861
TMR – W10 Token	Waitemata Hotel, Auckland Token	862
W10 Notes	Waitemata Hotel, Auckland (notes)	863
TMR – W11 Token	Wanganui Cosmopolitan Club one shilling (type 1) Token	864
TMR – W12 Token	Wanganui Cosmopolitan Club one shilling (type 2) Token	865
TMR – W13 Token	Wanganui Cosmopolitan Club 6d Token	866
TMR – W14 Token	Wanganui Cosmopolitan Club 4d Token	867
TMR – W15 Token	Wanganui Cosmopolitan Club 3d Token	868
W15 Notes	Wanganui Cosmopolitan Club (notes 1)	869
W15 Notes	Wanganui Cosmopolitan Club (notes 2)	870
W15 Notes	Wanganui Cosmopolitan Club (notes 3)	871
TMR – W16 Token	Wardells Bldgs Ch-Ch. Token	872
W16 Notes	Wardells Bldgs Ch-Ch (notes)	873
TMR – W17 Token	Weet-Bix Finger Puppet (Paper) Token	874
TMR – W18 Token	Weet-Bix Worldball (Paper) Token	875
TMR – W19 Token	Weet-Bix ONE in Red. (Paper) Token	876
TMR – W20 Token	Weet-Bix Tryathlete (Paper) Token	877
W17 to W20 Notes	Weet-Bix (notes)	878
TMR – W21 Token	Wellington City Corp. one pint (edge cut, no hole) Token	879
TMR – W22 Token	Wellington City Corp. one pint (no cut, with hole) Token	880
TMR – W23 Token	Wellington City Corp. one quart (edge cut, no hole) Token	881
TMR – W24 Token	Wellington City Corp. one quart (no cut, with hole) Token	882
W21 to W24 Notes	Wellington City Corp. (notes 1)	883
W21 to W24 Notes	Wellington City Corp. (notes 2))	884
TMR – W25 Token	Wellington Chamber of Commerce. Token	885
W25 Notes	Wellington Chamber of Commerce. (notes 1)	886

Check - TATTERSALLS STABLES, NEW PLYMOUTH New Zealand - Token Circa 1920'S

Reg. No: TMR - T1

Summary:

New Zealand
Penny(AD)
Mint: not recorded.

Discipline: Numismatics

More information

Tagged with: Transport tokens

Themes this item is part of: Numismatics & Philately Collection

Primary Classification: Tokens

Secondary Classification: New Zealand

Tertiary Classification: checks

Denomination: 4 pence

Inscriptions: (edge)
(Obverse) TATTERSALLS PROPRIETOR (J.W.WEST)
(Reverse) NEW PLYMOUTH FITZROY, BUS (FARES 4D)

Shape: octagonal

Size: 21 mm

Material: aluminium

Weight: ?? grams

Issued By: TATTERSALLS STABLES J.W. WEST PROPIETOR



Check - TATTERSALL'S STABLES, NEW PLYMOUTH J.W. WEST PROPRIETOR

New Zealand - Token Circa 1930's

Reg. No: TMR - T2

Summary:

New Zealand

No value(AD)

Mint: not recorded.

Could be Nelson Zinc



Discipline:

Numismatics

More information

Tagged with: Transport tokens

Themes this item is part of: Numismatics & Philately Collection

Primary Classification: Tokens

Secondary Classification: New Zealand

Tertiary Classification: Checks

Denomination: 3d bus fare

Inscriptions: (Edge)
(Obverse) NEW PLYMOUTH & FITZROY
(Reverse) TATTERSALLS STABLES J.W.WEST PROPRIETOR

Shape: Octagonal

Size: 20.55–20.00 mm

Material: Aluminium

Weight: 0.8 grams -1 gram

Issued By: TATTERSALLS STABLES
NEW PLYMOUTH



WEST, JAMES WILLIAM, Tattersall's Livery and Bait Stables, Egmont Street. New Plymouth, Established in 1890, Telephone 62, Mr. West's stables are within a minute's walk of the railway station, and occupy about half an acre of ground. Accommodation is provided for about eighty horses, and eleven new loose boxes have been added to meet the requirements of an increasing connection. In the main building, which contains a floor space of about 4500 square feet, there is a large stock of buggies, landaus, hansoms, brakes, etc. The office and ladies' waiting room are situated in front of the building. Regular conveyances meet the train on arrival, and several more are constantly employed in connection with the stables. On market days business is always exceptionally brisk, and sometimes as many as one hundred horses are baited. Mr. West is a native of Lincolnshire, England, and came to New Zealand in the year 1875. On his arrival in Taranaki, he was for some time engaged in bushfelling, and after farming for twelve years, entered into business. The general public may rely on receiving every attention at Tattersall's stables, and all orders and telegrams are promptly attended to.



MR. J. W. WEST'S STABLES.

MR. J. W. WEST'S STABLES.

Check - TAURANGA HARBOUR BRIDGE

New Zealand - Token Circa 1988

Reg. No: TMR - T3

Summary:

New Zealand
No denomination (AD)
Mint:

New Zealand Numismatic Society Tauranga
Harbour Bridge 1988 Medal

Discipline: Numismatics

More information

Tagged with: Token

Themes this item is part of: Numismatics & Philately Collection

Primary Classification: Tokens

Secondary Classification: New Zealand

Tertiary Classification: Checks

Denomination: No value

Inscriptions: (Edge) Plain
(Obverse) Three Coats of Arms / Tauranga City, Harbour Board and Mount Maunganui (Between bunches of thistles.) / Tauranga Numismatic Society
(Reverse) Tauranga Harbour Bridge / March 1988

Shape: Round

Size: 38 mm

Material: Gold (25) Bronze (2500)
Copper (20)

Weight: ?? grams

Issued By: Tauranga Numismatic Society





After much debate and a long construction period, a road bridge linking Tauranga and the town of Mt Maunganui was opened in 1988. The next year, city and town were amalgamated.

The original bridge was opened on 13 March 1988 by former Mayor of Tauranga, Robert Arthur Owens. Prior to the opening of the bridge, traffic wishing to travel between Tauranga and Mount Maunganui had to use the Hairini and Maungatapu bridges. The Tauranga Harbour Bridge was tolled from opening until 22 July 2001. The tollbooths were on the Mount Maunganui side of the bridge. As the population of Tauranga grew, the bridge began to get very congested during the peak hours.

As part of the Harbour Link project (which also included the construction of the Chapel Street Viaduct, the widening of Hewletts Road, and the construction of the Hewletts Road Flyover), a new bridge was constructed next to the original. On 7 September 2009, the new bridge opened. The original bridge now carries traffic towards Tauranga; the new bridge carries traffic towards Mount Maunganui.

Tauranga Harbour Bridge



Plaques at the Tauranga Harbour Bridge

Check - Team New Zealand, America's Cup Victory New Zealand - Token Circa 1995

Reg. No: TMR - T4

Summary:

New Zealand

Value: No value (AD)

Mint: Hansen & Berry Ltd. Auckland

Discipline: Numismatics

More information

Tagged with: Token / Cased medal

Themes this item is part of: Numismatics & Philately Collection

Primary Classification: Tokens

Secondary Classification: New Zealand

Tertiary Classification: Checks

Denomination: No value

Inscriptions: (Edge) Plain
(Obverse) Victory In The America's Cup / Logo Centre / San Diego –
13 May 1995

(Reverse) .999 / Yacht / NZL 32 / Black Magic

Shape: Round

Size: 42 mm

Material: Pure silver

Weight: 58.00 grams

Issued By: Royal N.Z.
Yacht Squadron



1995 America's Cup

The 29th America's Cup was contested between the winner of the 1995 Citizen Cup, Team Dennis Conner, with the yacht *Young America* (USA-36), and the winner of the 1995 Louis Vuitton Cup, Team New Zealand, with the yacht *Black Magic* (NZL 32). New Zealand won five races straight to take the cup away from the US for only the second time in 144 years.



Races

Date	Winner	Yacht	Loser	Yacht	Score	Delta
6 May 1995	Black Magic	NZL 32	<i>Young America</i>	USA 36	1-0	2:45
8 May 1995	Black Magic	NZL 32	<i>Young America</i>	USA 36	2-0	4:14
9 May 1995	Black Magic	NZL 32	<i>Young America</i>	USA 36	3-0	1:51
11 May 1995	Black Magic	NZL 32	<i>Young America</i>	USA 36	4-0	3:37
13 May 1995	Black Magic	NZL 32	<i>Young America</i>	USA 36	5-0	1:50

29th America's Cup



Black Magic (NZL 32) on display at New Zealand Maritime Museum, Auckland

Defender  **United States**

Defender club: San Diego Yacht Club

Yacht: *Young America*

Challenger  **New Zealand**

Challenger club: Royal New Zealand Yacht Squadron

Yacht: *Black Magic* (NZL 32)

Competition

Location: San Diego, United States

Dates: 6–13 May 1995

Rule: International America's Cup Class

Winner: Royal New Zealand Yacht Squadron

Score: 5–0

Check - The Bluff Smelter. NZAS (Tiwai Point) New Zealand - Token Circa 1971 Official Opening

Reg. No: TMR - T5

Summary:

New Zealand

No Value:- (AD)

Mint:-- Stokes. Melb. Australia

Discipline: Numismatics

More information

Tagged with: Advertising / Token

Themes this item is part of: Numismatics & Philately Collection

Primary Classification: Tokens

Secondary Classification: New Zealand

Tertiary Classification: Checks

Denomination: No value

Inscriptions: (Edge) Plain
(Obverse) The Bluff Smelter / N Z A S / Official Opening 30th
November 1971
(Reverse) (Picture of Furnaces) / Aluminium Furnace Line

Shape: Round

Size: 47.48 mm 4.5mm Thick

Material: Aluminium

Weight: 21.00 grams

Issued By: The Tiwai Point
Aluminium Smelter Ltd. Bluff



The **Tiwai Point Aluminium Smelter** is an aluminium smelter owned by Rio Tinto Group (79.36%) and the Sumitomo Group (20.64%), via a joint venture called New Zealand Aluminium Smelters Limited.

The facility, New Zealand's only aluminium smelter, is at Tiwai Point, near Bluff. It imports alumina and processes it into primary aluminium. The plant's alumina is supplied from refineries in Queensland and the Northern Territory of Australia. Around 90 per cent of the aluminium produced at NZAS is exported, mainly to Japan.

The smelter was opened in 1971 following the construction of the Manapouri Power Station by the New Zealand government to supply it with electricity. It uses 13 percent of New Zealand's electricity, and is reported to account for 10 percent of the Southland region's economy.



Location of Tiwai Point within New Zealand

History

In 1955, a geologist working for Consolidated Zinc Proprietary Ltd (ConZinc) identified a commercial deposit of bauxite in Australia on the west coast of Cape York Peninsula. The company investigated sources of large quantities of cheap electricity needed to reduce the alumina recovered from the bauxite into aluminium. In 1960, ConZinc reached an agreement with the government for it to build a smelter and power station using the hydroelectric capacity of Lake Manapouri and Lake Te Anau. In 1963, ConZinc decided not to build the power station, and following that decision the government decided to construct it, with power first being generated in 1969. Construction of the Manapouri Power Station attracted controversy for its environmental effects, with over 264,000 New Zealanders signing the Save Manapouri petition. With a supply of electricity to be available, ConZinc built the Tiwai Point smelter, opening in 1971.

Tiwai Point is the only aluminium smelter in New Zealand. In December 1980, the government announced a project that would build a second smelter at Aramoana, but opposition from the public, changes in the aluminium market, and the loss of a commercial partner meant the project did not go ahead.

Operations

The smelter uses the Hall-Héroult process to convert alumina (aluminium oxide) to elemental aluminium. Bauxite is mined in Australia and refined into alumina before being shipped to New Zealand. The smelter consists of three lines of P69 technology cells, with 208 cells each (i.e. 624 total), and one line of 48 CD200 technology cells. The third P69 Line was built in the early 1980s as part of Muldoon government's "Think Big" projects.

The smelter produces the world's purest aluminium – 99.98 percent pure – and is one of two smelters in the world producing ultrahigh purity aluminium. In 2011 the smelter produced 354,030 saleable tonnes of aluminium, which was its highest ever output at the time. In 2015, it produced 335,290 tonnes.

Electricity use

The smelter's power demand from the national grid is about 570 MW. Most of the energy for the smelter is supplied from the Manapouri hydroelectric power station, via two double circuit 220 kV transmission lines. The facility is the largest electricity consumer in New Zealand, and uses approximately one third of the total electricity consumed in the South Island and 13% of the total electricity nationwide, equivalent to about 680,000 households.

New Zealand Aluminium Smelters has a contract for electricity supply with Meridian Energy for the continuous supply of 572 megawatts for the period 2013 to 2030. A variation of this agreement was signed in 2015.



Economic effects and threats of closure

NZAS reports that the facility employs 800 full-time employees and contractors and indirectly creates jobs for 3,000 people. The smelter is reported to account for 10 percent of the Southland region's economy.



Tiwai Point has frequently operated at a loss, such as in 2012 when it lost \$548 million. Analysts have commented that the profitability of the smelter is most dependent on prices for electricity, alumina and the finished aluminium as well as the New Zealand dollar. Between 2008 and 2013, aluminium prices fell by much media commentary in April 2013 focused on the impact of closure on both domestic power prices and share prices when the State Owned Enterprise and electricity generator Mighty River Power would be partially sold off to private investors. NZAS produced a report which claimed that if the smelter closed, there would be a permanent loss to Southland's GDP of about 7-8 percent and that 2-3 percent of Southland's population could move out of the region. Invercargill mayor Tim Shadbolt said it was a myth that closing the smelter would result in lower prices, and vowed to keep it open.

In August 2013, the New Zealand government agreed to make a \$30 million payment to NZAS as a deal to support the smelter and to save jobs, exchange for agreeing the smelter cannot be closed before January 2017.

Finance Minister Bill English said the Government would make no further contribution to support it, which he reiterated in 2015 following speculation that Rio Tinto was seeking to sell the smelter.

In 2016, an analyst First New Zealand Capital (FCNZ) utilities said that the smelter was thought to be breaking even, and that favourable currency rates and low alumina prices were helping matters.

Environmental effects

Aluminium smelting via the Hall-Héroult process produces carbon dioxide as a by-product. The basic reaction is $\text{Al}_2\text{O}_3 \rightarrow 2\text{Al} + 3\text{O}$; if all the oxygen at the red-hot carbon anode becomes carbon monoxide (that subsequently becomes carbon dioxide) then for one tonne of aluminium, 1.55 tonnes of CO would result, becoming 2.4 tonnes of CO₂. However, if all the oxygen went directly to CO₂, then 1.56 tonnes of CO₂ would result. At the stated rate of 1.97 tonnes of carbon dioxide per tonne of aluminium, the production of 272,000 tonnes of aluminium in a year would emit 535,000 tonnes of carbon dioxide. In 2007, Tom Campbell, the chief executive of majority owner Rio Tinto Aluminium NZ, said that the smelter was among the top 5%

Check - THE CO-OP DAIRY COY OF OTAGO LTD. DUNEDIN, New Zealand - Token Circa 1900's

Reg. No: TMR - T6

Summary:

New Zealand
No value (AD)
Mint: not recorded.

Discipline: Numismatics

More information

Tagged with: Milk suppliers--- Name Tag

Themes this item is part of: Numismatics & Philately Collection

Primary Classification: Tokens

Secondary Classification: New Zealand

Tertiary Classification: Checks

Denomination: No value

Inscriptions: (Edge) Plain
(Obverse) THE CO-OP DAIRY COY OF OTAGO LTD DUNEDIN
(Reverse) T.A. HAWLEY ROMAHAHA (around T30)

Shape: Round

Size: 58 mm

Material: Brass

Weight: 20.7 grams

Issued By: The Co-op Dairy Coy
Of Otago Ltd. Dunedin



Brass , 58mm .

Holed for suspension .

Obverse: 'THE CO-OP DAIRY COY OF OTAGO LTD. DUNEDIN'.

Reverse: 'T.A.HAWLEY ROMAHAHA', around 'T30' .

Romahapa is a district in Otago .

A milk suppliers name tag .



THE CYCLOPEDIA OF NEW ZEALAND [OTAGO & SOUTHLAND PROVINCIAL DISTRICTS]

ROMAHAPA

ROMAHAPA.

ROMAHAPA is a small village on the Catlins river line of railway. It lies sixty-one miles south-west from Dunedin and eight miles from Balclutha. Early in the "fifties," settlers went to South Clutha, and in 1854 there were five families in the district: namely, those of Messrs Hay, Brugh, Mercer, Willsher, and Archibald Brothers. A considerable portion of the country was covered with bush and flax, and sawmilling was one of the first industries. Dairyfarming is an important industry among the present settlers; but, in addition to the local creamery, there are twine, flax, and sawmills in active operation. The pioneer settlers built the first school on church endowment land, and their example has been imitated in more modern days by the younger generation, who have erected a public hall. The village has an old-established Presbyterian church, a Government school, post and telegraph office, and a good general store. Romahapa is the nearest railway station to Port Molyneux and Puerua.

Check - The New Zealand Police Centennial (1886-1986) New Zealand - Token Circa 1986

Reg. No: TMR - T7 (Held a police Tattoo at Western Springs, Auckland 4-7 March 1986)

Summary:

New Zealand

Penny(AD)

Mint /Maker: not recorded.

Produced only 250

Discipline: Numismatics

More information

Tagged with: Commemorative/ Tokens

Themes this item is part of: Numismatics & Philately Collection

Primary Classification: Tokens

Secondary Classification: New Zealand

Tertiary Classification: Checks

Denomination: No value

Inscriptions: (Edge) Plain
(Obverse) N Z P Badge (In blue)
(Reverse) The New Zealand / 1886 Crossed Truncheons1986 / Police Centennial (All in blue)

Shape: Round

Size: 50.76 mm

Material: Wooden

Weight: 4.7 grams

Issued By: N.Z. Police
Wellington



Check - The Numismatic Society Of Auckland New Zealand - Token Circa 2019 (60Years)

Reg. No: TMR - T8

Summary:

New Zealand
No value(AD)
Mint: not recorded.

Discipline: Numismatics

More information

Tagged with: Medal / tokens

Themes this item is part of: Numismatics & Philately Collection

Primary Classification: Tokens

Secondary Classification: New Zealand

Tertiary Classification: No value

Inscriptions: (Edge) Plain
(Obverse) The / Numismatic / Society Of / Auckland / 1959 60 2019 / Years

(Reverse) Logo's Birds / E*Moneta*Societas

Shape: 5 Sided

Size: mm

Material: Copper and Silver

Weight: 26.9 grams Copper
32.8 grams Silver

Issued By:



The Royal Numismatic
Society of New Zealand



The Numismatic Society of Auckland, PO Box 818, Shortland St, Auckland 1140.

The NSA was formed in 1959. Monthly meetings are held, except in January, on the second Wednesday of the month at 7.30 pm in Discovery 4 at MoTaT, with the gate typically manned for 10 minutes from 7.25 pm. Meetings are informal and interesting. Anyone wishing to attend should contact Jim Duncan (09-422-3525) or David Baird (09-846-7463) for directions.

The NSA publishes a monthly magazine MINTMARK of 8 to 20 pages, with some illustrations. Previous publications are for sale (post free) and include: "The Millennium Series (\$5 each); "Matthew Boulton" (\$6, illustrated) and a catalogue of the works of Anton Teutenberg, a German Auckland-based engraver of the 19th century, which is heavily illustrated (\$35).

It is the intention of the Numismatic Society of Auckland to mark its 60th anniversary with a commemorative medal which has been designed by a member, Roger Barnes.

The 38mm medal will be struck in sterling silver (40 pieces) and in copper (60 pieces), and will be available at NZ\$95 and NZ\$25 respectively, with delivery at cost.

The striking design is a departure from tradition and includes the badge of the Society, which Roger Barnes has also created.



THE SYMBOLISM BEHIND THE SOCIETY'S 60TH ANNIVERSARY MEDAL

The large bird is an extinct female

Huia, and it holds a shield which is divided in the shape of a letter A, for 'Auckland', with the green part a volcanic cone. The uppermost triangle suggests 'City of Sails' – a sign of our harbour heritage. The blue and white are the City's heraldic and rugby colours. The three birds are: top left the Kiwi in gold from a modern Dollar coin; top right an Owl in silver from ancient Athens; and bottom a Tui from the old copper Penny.

The Kiwi, Tui and Huia are all native to New Zealand. The motto E MONETA SOCIETAS (from money comes society) was suggested by NSA member Dr Tony Butler.

Design by Roger Barnes.

Mintage 40 silver, 60 copper.

Check - THE TAIL-WAGGERS CLUB, OF N.Z.**New Zealand - Token Circa 1920-1930**

Reg. No: TMR - T9

Summary:

New Zealand
 No denomination (AD)
 Mint:

Discipline: Numismatics

More information

Tagged with: Dog Tags/Pet tokens

Themes this item is part of: Numismatics & Philately Collection

Primary Classification: Tokens

Secondary Classification: New Zealand

Tertiary Classification: Checks

Denomination: Dog # 712

Inscriptions: (Edge) Plain
 (Obverse) THE TAIL-WAGGERS CLUB OF NZ
 I Help my Pals
 (Reverse) PLEASE RING POLICE QUOTING THE ABOVE NUMBER

Shape: Round (with hole to attach to collar)

Size: 23.97 mm -24.01 mm

Material: C&N

Weight: 3.8 grams

Issued By: TAIL-WAGGERS CLUB OF N.Z.



Check - THE TAIL-WAGGERS CLUB, OF N.Z.**New Zealand - Token Circa 1920-1930**

Reg. No: TMR - T10

Summary:

New Zealand
 No denomination (AD)
 Mint:

Discipline: Numismatics**More information****Tagged with:** Dog Tags/Pet tokens**Themes this item is part of:** Numismatics & Philately Collection**Primary Classification:** Tokens**Secondary Classification:** New Zealand**Tertiary Classification:** Checks**Denomination:** Dog # 865

Inscriptions: (Edge) Plain
 (Obverse) THE TAIL-WAGGERS CLUB OF NZ
 I Help my Pals
 (Reverse) PLEASE RING POLICE QUOTING THE ABOVE NUMBER

Shape: Round (with hole to attach to collar)**Size:** 23.91 mm –23.93 mm**Material:** C&N**Weight:** 3.6 grams**Issued By:** TAIL-WAGGERS CLUB OF N.Z.

THE TAIL-WAGGERS CLUB. TOKEN Circa 1928

Tailwaggers CLUB TRUST

Tailwaggers Club Trust - over 75 years of success

The Tailwaggers Club was founded in 1928 by Captain Horace Hobbs. Dogs that became members of The Tailwaggers Club received a special collar medallion engraved with the Club's logo and the motto 'I help my pals'. In just over a year, the Club flourished and more than 200,000 dogs had enrolled, enabling £20,000 to be donated to help the work of the Royal Veterinary College.

In 1930, The Tailwaggers Club was able to offer financial support to the newly-formed Guide Dogs for the Blind. During the mid-30's, the Club had almost a million dog members, many of them belonging to the Royal family and famous celebrities.

The Club continued on a reduced scale after the Second World War and in 1960, Spillers petfood company bought the club assets. The Club received a number of substantial legacies, and Spillers registered a charitable trust in 1972 to administer these funds - the Tailwaggers Club Trust.



Today, Tailwaggers operates as an extremely small organisation, but it does make a real difference to pet owners, struggling to pay vet bills. Anything you can give will make a huge difference to needy pet owners who might otherwise be left with nowhere to turn.

About the work of Tailwaggers Club Trust

If you love dogs and cats and enjoy helping them, then please think about supporting the work of Tailwaggers Club Trust.

We are not just another dog and cat charity. Tailwaggers helps needy dog and cat owners in meeting the cost of veterinary bills. Often the need for help is a result of a change in circumstances: ill health; domestic situations; financial hardship or just simply a consequence of bad luck. To receive an unplanned veterinary bill, due to a pet's serious accident or illness can be devastating to owners.

We are often the ONLY organisation that dog and cat owners can turn to when they are in distress about meeting the cost of unexpected veterinary bills. Sometimes this can, quite literally, make the difference between life and death of a beloved pet. Unlike other animal charities, Tailwaggers does not adhere to strict rules and regulations and reviews each referral on individual merits, which gives us greater flexibility in helping pet owners.

Where possible Tailwaggers also aims to help organisations in providing support for veterinary treatment to ease the suffering of abandoned dogs and cats.

Currently, Tailwaggers can only afford to award grants of around £1,000 per month. In the last 10 years more than 1,700 grants have been issued to deserving cases - very often to pet owners unable to find help from other sources.

Tailwaggers relies solely on donations from the public. Tailwaggers would like to help even more people and their pets, but the amount of help we can give depends on the generosity of the donations the Trust receives. If the Trust had more funds, it could help even more deserving cases. PLEASE make a difference today by giving whatever donation you can afford - THANK YOU.

THE TAIL-WAGGERS CLUB. TOKEN Circa 1928
ENGLAND -LONDON, EARLY TYPE



Check - THE TARANAKI FARMERS COMPANY New Zealand - Token Circa 1890's to 1930's

Reg. No: TMR - T11

Summary:

New Zealand

20 shillings, denomination (AD)

Mint:

Discipline: Numismatics

More information

Tagged with: Discount/ tokens

Themes this item is part of: Numismatics & Philately Collection

Primary Classification: Tokens

Secondary Classification: New Zealand

Tertiary Classification: Checks

Denomination: 20/-

Inscriptions: (Edge) Plain
(Obverse) THE TARANAKI FARMERS COMPANY
(Reverse)

Shape: Round

Size: 25.5 mm

Material: Brass

Weight: ?? grams

Issued By: Taranaki Farmers Company.

PAPERSPAST

[Papers Past Home](#) [Introduction](#) [Search](#) [Browse](#)

[Papers Past](#) > [Taranaki Herald](#) > [9 May 1885](#) > [Page 2](#) > [TARANAKI FARMERS' CO-OPERATIVE ASSOCIATION](#)

TARANAKI FARMERS' CO-OPERATIVE ASSOCIATION.

Taranaki Herald, Volume XXXIII, Issue 6752, 9 May 1885, Page 2

TARANAKI FARMERS' CO-OPERATIVE ASSOCIATION.

THE adjourned meeting of the Taranaki Farmers' Co-operative Association, to be held in the Salvation Hall, to-day, again failed to attract a quorum, and it consequently lapsed. It will be remembered that shareholders were to obtain proxies to make the meeting possible, but only twelve proxies had been sent in, and the number present was only fifty, so the legal quorum of 167 was wanting. Mr. T. Bayly, chairman of directors, announced that the meeting could not be held, and informed the gathering that the direction of the management would have to rest entirely with the directory till the annual meeting, which would be held in six months' time. Mr. Connet thought the opportunity should not be let pass of ascertaining the wish of the shareholders present, and he proposed that Mr. T. Bayly take the chair for the purpose. Mr. Bayly did so, and then Mr. Connet proposed that the Association be kept going for six months with only one store. He thought there was a chance after all of things improving, and so averting the necessity of winding up altogether—at all events it would be better to keep open and reduce the stock by regular trade than wind up and sacrifice it by auction. Mr. Honeyfield seconded the motion. An amendment was moved by Mr. Wells that the affair be wound up forthwith, and it was seconded by Mr. Corney. Considerable difficulty was experienced in getting the result of the voting. On a division being taken, it was found that there was a majority of ten for keeping the Association open for six months. The meeting then closed.

Check - THE TOGGERY, DUNEDIN

New Zealand - Token Circa 1920's

Reg. No: TMR - T12

Summary:

New Zealand

Value:-One Shilling (AD)

Mint: not recorded.

Discipline: Numismatics

More information

Tagged with: Good For Token/Menswear

Themes this item is part of: Numismatics & Philately Collection

Primary Classification: Tokens

Secondary Classification: New Zealand

Tertiary Classification: Checks

Denomination: 1 shilling

Inscriptions: (Edge) Plain
(Obverse) THE TOGGERY (GRAND HOTEL CORNER)
(Reverse) GOOD FOR DISCOUNT (1/- IN THE POUND)

Shape: Round

Size: 25.84 mm–25.94 mm

Material: Aluminium

Weight: 1.7 grams

Issued By: THE TOGGERY,
DUNEDIN



Check - THE TOGGERY, DUNEDIN New Zealand - Token Circa 1920's

Reg. No: TMR - T12 Notes

Summary:

New Zealand

Value:-One Shilling (AD)

Mint: not recorded.

The Toggery Discount Token

Ray Hargreaves FRNSNZ

A discount token that is not easily come by is one issued by The Toggery in Dunedin.

The Toggery advertised itself as men's "Hatters and Mercers" and occupied a shop in the Grand Hotel building on the corner of Princes and High streets - a good location in an area which, at the time, was the centre of Dunedin's CBD. When it opened, The Toggery described its imported stock as having "quality without exclusiveness and style without freakishness".

The shop first opened on 17 April 1909, under the direction of J. Mair and Co. The company had two partners, John Mair and Thomas Shepherd. This partnership was dissolved on 7 February 1910, when Shepherd withdrew. The business continued until late August 1914, when the firm was purchased from Mair by William Penrose & Co. of George St, Dunedin.

The token can thus be dated as having been issued somewhere in the period 1909 to 1914. I have not been able to personally examine a Toggery token, but a description published in the Otago Daily Times (4 April 1977) recorded that on the

obverse of the token are the words "The Toggery, Grand Hotel Corner, Dunedin", and on the reverse "Good for 1s in the pound discount".

The token is of aluminium, with a diameter of 2.6 cms (ref. G102 in A.W. Grant: The John Bertrand™ New Zealand Coin & Banknote Catalogue, 2013 edition).

Any corrections and / or additional information to the above would be welcomed. There is much research needed on this type of token, and I am sure the Editor of the Newsletter will welcome any contributions.

Issued By:

THE TOGGERY,
DUNEDIN

Check - The Transalpine, Greymouth NZ New Zealand - Token Circa 2000's

Reg. No: TMR - T13

Summary:

New Zealand
Value:-No value
Mint: Not recorded.

Discipline: Numismatics

More information

Tagged with: Souvenir / Tokens

Themes this item is part of: Numismatics & Philately Collection

Primary Classification: Tokens

Secondary Classification: New Zealand

Tertiary Classification: Checks

Denomination: No Value

Inscriptions: (Edge) Plain
(Obverse) The Transalpine / Train picture / Greymouth NZ
(Reverse) New Zealand / Map / Souvenir Coin

Shape: Round

Size: 30.38 mm

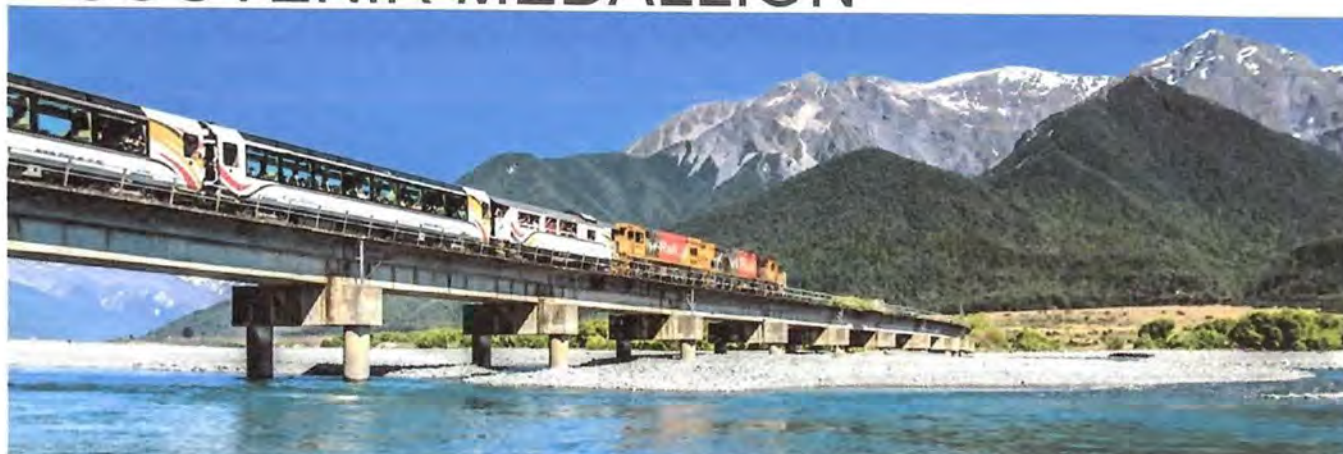
Material: Brass

Weight: 11.8 grams

Issued By: N.Z. Railways
Greymouth



N.Z THE TRANSALPINE GREYMOUTH SOUVENIR MEDALLION



TranzAlpine

Take in the South Island's stunning mountains and the vast Canterbury Plains aboard the TranzAlpine. New Zealand's finest inland rail journey.



The Journey

Experience the South Island's striking natural landscape by taking a train between Christchurch and Greymouth. Along this journey you'll see epic vistas, travel the edges of the ice-fed Waimakariri River, traverse the Southern Alps, and see miles of native beech forest.

The TranzAlpine is one of the world's great train journeys covering 223 kilometres (139 miles) one-way, taking just under 5 hours. You'll traverse the majestic Canterbury Plains, to the backdrop of the mighty Southern Alps - the journey of a lifetime.

Check - The Whitehead & Hoag Co. 228 Queen St. Auckland New Zealand - Token, Circa 1900's (Leased an office)

Reg. No: TMR - T14

Summary:

New Zealand

Penny (AD) No value

Mint: The Whitehouse & Hoag Co.

Discipline: Numismatics

More information

Tagged with: Key tag tokens

Themes this item is part of: Numismatics

Primary Classification: Tokens

Secondary Classification: New Zealand

Tertiary Classification: Checks

Denomination: No value

Inscriptions:

(Edge) Odd shapes

(Obverse) Registered / And Presented By / The Whitehead&Hoag Co
228 Queen Street / Auckland N.Z./ Specialty Advertising / 129 /
Reward For Return Of / Keys & Tag To above / Address

(Reverse) (Factory Picture) / The Whitehead & Hoag Co. Newark N.J.

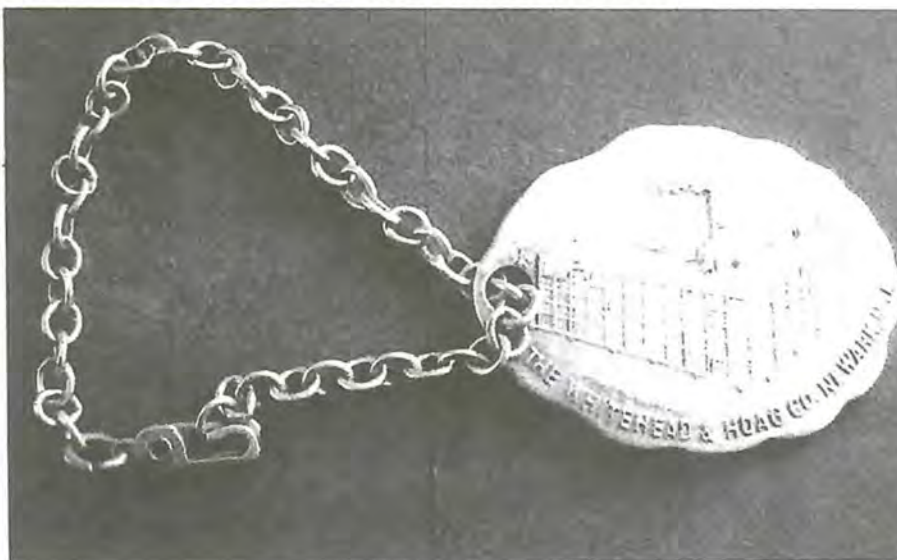
Shape: Oval (Holed with chain)

Size: 38 mm x 28 mm

Material: Nickel

Weight: 10.00 grams

Issued By: The Whitehead & Hoag Co.
Newark N.J. U.S.A.



Whitehead & Hoag was founded in 1892 in Newark, New Jersey, by Benjamin S. Whitehead (1858-1940) and Chester R. Hoag (1860-1935) when the two teamed up to combine their expertise and formalize their friendship.

Benjamin Whitehead had studied Printing at the Cooper Union Institute in New York City and first distinguished himself as a printer when his products were exhibited at the 1876 Centennial Exposition in Philadelphia. He was very enterprising, traveled a lot and collected ideas for novelties that he might later produce in his shop.

Chester Hoag had no formal education beyond grammar school but was a voracious reader and self-educator. Hoag first met Whitehead when he sold him paper and twine for his printing business. At the time, Whitehead was busy printing programs and badges for local picnics and parties. The business developed in conjunction with their friendship.

In 1892 the two friends decided to team up and formally incorporated under the name *Whitehead & Hoag Company*. Over time they developed expertise in manufacturing buttons and acquired three major patents that allowed them to grow the company into the dominant player in this lucrative field. Buttons were in high demand as they were a very cost-effective way of advertising, both in business and in politics, and Whitehead & Hoag serviced that demand very well.

During the Second World War Whitehead & Hoag employed over 400 workers but it could not successfully grow from a mid-sized family-owned company to a large corporation. In 1953 the last founders' family member with an active interest in the company died and the firm started deteriorating. One or two profitable years would be followed by several years of financial losses. In 1959, a long-time competitor, Bastian Bros. of Rochester, N.Y., bought the business.

It appears that more than a little vengefulness were at work in winding down operations. Rather than merging Whitehead & Hoag into Bastian's business, the new owner ordered the factory to be sold and all dies and records destroyed. Thus the carefully archived records and dies of many beautiful medals were lost.

Bastian kept the tradename *Whitehead & Hoag* alive till 1965 but then stopped using it completely. While the real end had come years earlier, 1965 marks the official end of Whitehead & Hoag, a once proud firm that had produced quality medals for many years.

Check - The Whitehead & Hoag Co. 228 Queen St. Auckland New Zealand - Token, Circa 1900's (Leased an office)

Reg. No: TMR - T15

Summary:

New Zealand

Penny (AD) No value

Mint: The Whitehead & Hoag Co.

Discipline: Numismatics

More information

Tagged with: Key tag tokens

Themes this item is part of: Numismatics & Philately Collection

Primary Classification: Tokens

Secondary Classification: New Zealand

Tertiary Classification: Checks

Denomination: No value

Inscriptions: (Edge) Odd shapes
(Obverse) Registered / And Presented By / The Whitehead&Hoag Co
228 Queen Street / Auckland N.Z./ Specialty Advertising / 261 /
Reward For Return Of / Keys & Tag To above / Address
(Reverse) (Factory Picture) / The Whitehead & Hoag Co. Newark N.J.

Shape: Oval (Holed)

Size: 38 mm x 28 mm

Material: Nickel

Weight: ?? grams

Issued By: The Whitehead & Hoag Co.
Newark N.J. U.S.A.



Token



Features

Country	* Tokens * (Great Britain)
Year	1880
Metal	Brass
Weight	7.65 g
Diameter	30.5 mm
Thickness	1 mm
Shape	Round
Orientation	Medal alignment ↑↑

These tokens could also have been used in New Zealand 1930's to 1950's By a Great Britain Company.

Obverse

Bear in centre, facing with paws folded, smoking pipe, lettering either side on ribbon. Lettering above and below

Lettering:

SMOKE THORBECKE'S
MONOPOLY
TRADE MARK
CIGARETTES
MACHINE MADE

Thorbecke's Smoking Bear Brass Token

Reverse

Inner circle containing scroll at top, 12-line inscription interspersed with numbers and a bracket, lowest line curved. Lettering around outside

Lettering:

"REALLY GOOD AND CHEAPER THAN OTHERS" TOB. TRADE REV. 9 OCTOBER 80 *
 MAKING BY MACHINE ENABLES US TO OFFER
 10 EXQUISITE VIRGINIA OR TURKISH } FOR 4D.
 20 DO. FOR 8D.
 BEST RICE PAPER NEATER & CHEAPER THAN HAND MADE
 PRIZE AT MELBOURNE EXHIBITION

Translation: TOB. TRADE REV. = Tobacco Trade Review award: 9/10/1880

Edge

Plain

Comments

Thorbecke's brass advertising token undated.

Seen at times in Australia and is listed in a Queensland catalogue along with another three reverse types.

'The Times, London, Monday February 9 1880; Smoke Thorbecke's machine made 'Monopoly' cigarettes. London, 1881.' 'National Library of New Zealand - as paper ephemera, and there was a German company A H Thorbecke Co Mannheim also tobacco manufacturers. It appears that this token was issued by a London company, but mostly turn up in the Antipodes.'

The cigarettes were made in Great Britain but available in the colonies. Although London made, these cigarettes seem to have been sold to the Colonial & Empire market.

Perversely the bear is smoking a pipe rather than a cigarette, so it's obviously a very independently-minded bear. The token is about the size of a contemporary British penny, 30.5mm in diameter.

Reference Number: CURIOS-009-010

Record 1 of 1.

Record Title : Maker unknown

The Times, London, Monday February 9 1880; Smoke Thorbecke's machine made 'Monopoly' cigarettes. London, 1881.

Reference Number : Curios-009-010

Physical Description : Letterpress on paper, 127 x 151 mm

Quantity : 1 curio(s)

Scope and Contents : An advertisement for cigarettes

Check -THORBECKE'S SMOKING BEAR

New Zealand - Token Circa 1930's to 50's

Reg. No: TMR - T17



Features

Country	* Tokens * (Great Britain)
Year	1880
Metal	Brass
Weight	7.65 g
Diameter	30.5 mm
Thickness	1 mm
Shape	Round
Orientation	Medal alignment ↑↑

These tokens could also have been used in New Zealand 1930's to 1950's By a Great Britain Company.

Obverse

Bear in centre, facing with paws folded, smoking pipe,
Lettering above and below

Lettering:

SMOKE THORBECKE'S
MONOPOLY
REGISTERED TRADE MARK
MACHINE MADE
CIGARETTES

Thorbecke's Smoking Bear Brass Token

Reverse

9-line inscription, lowest line curved.

ALTHOUGH
USING EXQUISITE
TOBACCOS & BEST
RICE PAPER THE
MAKING BY MACHINERY
ENABLES THEM TO OFFER
TO THE CONSUMER
20 FOR 8d
10 FOR 4d
TOB. TRADE REVIEW 9/10/80

Yes... a RARE Unlisted Australian and New Zealand related Cigarette Tobacco "Smoking Bear" Token

This offering relates to Trade Advertising Token STRUCK and ISSUED in 1880 at the Melbourne International Exhibition and featuring a Pipe Smoking Bear - though it really relates solely to cigarettes AND it is the FIRST such token ever issued in Australasia: one that relates solely to machine rolled "Tailor Made" cigarettes.

This is a PENNY sized token struck in BRASS (the rarest of two metals used in striking).

The Obverse reads " Smoke Thornbacks' cigarettes Monopoly - Machine Made Cigarettes"

The Reverse advertising blurb is: "Although using exquisite tobaccos and best rice paper - the making by machinery enables them to offer to the consumer 20 For 8D or 10 For 4D"

Then -"TOBACCO TRADE REVIEW 9/10/80"

Thornbacks' cigarettes were a London based Tobacco Company and sold their cigarettes to the Australasian Colonies - INCLUDING New Zealand

As said- There are two token varieties, this one being the scarcer of the two, made in brass, dated 1880

Edge
Plain



Re: Thorbecke's Cigarettes

Thorbecke is a well-known Dutch family name*. Combine that with the date 1880 and the pricing in £sd and my best guess is South Africa. While Australia/New Zealand are other popular destinations for Dutch emigrants, the bulk of them arrived there after 1945.

Johan Rudolph Thorbecke (14 January 1798 – 4 June 1872) was a Dutch politician and statesman of Liberal signature, one of the most important Dutch politicians of the 19th century.

In 1848 he virtually single-handedly drafted the revision of the Constitution of the Netherlands, giving less power to the king, and more to the States General of the Netherlands.

Early life and education

Thorbecke was born in Zwolle. His father Frederik Willem was a Lutheran tobacco manufacturer of German descent, while his mother Christine Regina was born in the Lower Saxon Osnabrück. Frederik Willem's business suffered badly from the anti-British policies of the French occupiers, and his tobacco factory went bankrupt in 1803, after which he was unable to find another source of employment and would spend most of his time on the education of Johan Rudolph and his younger brother.

His Excellency

Johan Rudolph Thorbecke



Check - Timaru, Freemasons Bravery 1882

New Zealand - Token Circa 1982

Reg. No: TMR - T18

Summary: 1982 Reproduction, of the original design by S. Reading
38mm in gold plated Sterling Silver. Only 50 struck.

New Zealand
Penny(AD)
Mint: Not recorded.

Discipline: Numismatics

More information

Tagged with: Tokens

Themes this item is part of: Numismatics & Philately Collection

Primary Classification: Tokens

Secondary Classification: New Zealand

Tertiary Classification: Checks

Denomination: No value

Inscriptions: (Edge) Plain
(Obverse) Presented By Freemasons of St Johns Lodge 1137.E.C. /
For / Bravery / in / Saving Life / Timaru Roadstead / 14 May / 1882 / TIMARU
(Reverse) Picture Lifeboat going out into the waves

Shape: Round

Size: 38 mm

Material: Silver

Weight: ?? grams

Issued By: St. Johns Lodge 1137 Timaru
E.C. Means English Constitution



Two Wrecks at Timaru May 1882

The *Ben Venue* and *City of Perth*



This photograph shows the *Ben Venue* and *City of Perth* after they broke loose from their moorings. Timaru and Ōamaru ports were both on exposed beaches. They provided little protection from large southerly swells. On 14 May 1882 big seas began to run at Timaru. The cables holding the *Ben Venue* parted and she turned broadside then capsized. The crew made for the *City of Perth*, but she too lost her anchors and ran aground beside the *Ben Venue*, and the crews took to lifeboats. All would have been well had the harbourmaster not headed for the *City of Perth*. Getting aboard, he realised the hopelessness of the situation, and some of his men launched a lifeboat. When it capsized 40 men were left struggling in mountainous seas. In all, three from the *City of Perth* and six shore hands died.

The ocean rollers came in with their might and fury; the crowd of idlers who gathered on the beach in the morning to watch the magnificent effects of the surf, soon became witnesses and actors on an exciting scene of shipwreck, attended by some loss of life. - Otago Witness

The spectacle of tragedy, it is said, purifies the soul with pity. One can well believe that to look on self-devotion like that which sent the Timaru boatmen to their death must -for the moment, at least- cleanse the meaner feelings out of any man's breast. The lives lost were all heroically offered to death at the call of duty and humanity. No coward died at Timaru. They went out in the face of certain danger. - Otago Witness

Check - Timaru Post, Timaru New Zealand - Token Circa 1920's

Reg. No: TMR - T19

Summary:

New Zealand

Penny(AD)

Mint: not recorded. (But made in U.S.A.)

Discipline: Numismatics

More information

Tagged with: Produce tokens

Themes this item is part of: Numismatics & Philately Collection

Primary Classification: Tokens

Secondary Classification: New Zealand

Tertiary Classification: Checks

Denomination: Newspaper

Inscriptions: (Edge) Plain
(Obverse) TIMARU POST CO LTD (NEWSPAPER) Made in U.S.A.
(Reverse) THIS WILL BUY YOU A TIMARU POST

Shape: Round

Size: 29.08 mm

Material: Aluminium

Weight: 2.4 grams

Issued By: Timaru Post Co Ltd



Newspapers of New Zealand

[HOME](#)
[BY TITLE](#)
[BY DATE](#)
[BY PLACE](#)
[DIGITISED](#)
[CURRENT](#)
[ABOUT](#)

Timaru Post

Newspaper

About this title

Timaru Post was published from 1901 to 1939 in [Timaru](#) ([Timaru District](#), [Canterbury](#)).

Predecessor titles

Related titles

Successor titles

Continues: [Morning Post](#)

Key information

Field	Value
Type	Newspaper
District	Timaru District
Region	Canterbury
Holdings	New Zealand Libraries
Frequency	Daily

Timaru Herald

The Timaru Herald is the daily newspaper in Timaru. It has been published continuously since 1864. In the 1870s it was one of New Zealand's most important newspapers.

The Herald was founded by Alfred George Horton and Ingram Shrimpton. The first issue was printed on 11 June 1864. Originally publication was weekly.

The Herald was set up to promote the interests of Timaru and Gladstone districts against those of the Canterbury province to which they belonged. People in the Timaru area thought they were not getting a fair share of the revenues collected by the provincial government. Horton's involvement in this issue is very clear; he helped promote a bill in parliament setting up the Timaru and Gladstone Board of Works. This gave Timaru more control of expenditure on public works in the area and seems to have satisfied the local desire for independence from Canterbury.

In 1866 the Herald became a bi-weekly, and in 1871 Horton sold to Herbert Belfield. Horton went on to become one of the most important newspaper publishers in New Zealand when, in 1876 he joined the Wilson family to create Wilson and Horton, the publishers of the New Zealand Herald for so many years.

In the 1870s the Timaru Herald developed into a significant newspaper with a national reputation. This was largely due to the editor Edward Wakefield. Wakefield, the nephew of Edward Gibbon Wakefield, was an able and hard-hitting writer who was active in both local and national affairs. He was a Member of the House of Representatives in the 1870s and 1880s. As editor of the Herald he led campaigns that gained Timaru a port and waterworks. In parliament he had a reputation as a fierce debater but also for fickleness, which probably prevented him from achieving high office. In 1876 he was summoned to appear before the House of Representatives on a charge of breach of privilege after he wrote an article in the Herald that impugned the integrity of the current Members. The charges were dropped after Wakefield apologised to the House. During Wakefield's term the paper began daily publication. He left the Herald in 1885 when he moved to Wellington.

During the 1880s the Herald ran into financial difficulties. The Timaru Herald Company was formed to take over ownership with Herbert Belfield retained as the manager of the newspaper. In 1886 the paper was leased by its mortgagees to Joseph Ives, an indefatigable founder and owner of newspapers in New Zealand in the 19th century. Ives is reckoned to have started twenty-six newspapers; characteristically he did not stay with the Herald for long.

In 1887 the paper was sold to Edward George Kerr. Kerr already owned another Timaru newspaper, the South Canterbury Times. Kerr ran the Times and the Herald from the same building, with the Herald published in the morning and the Times in the evening. The Times was closed in 1901 as part of a deal Kerr made with the other morning paper, the [Timaru Post](#). Kerr persuaded the Post to switch to evening publication, becoming in effect the evening edition of the Herald. In 1923 the Herald began to subsidise the Post to keep it going. The Post ceased in 1939.

The Kerr family owned and managed the Herald until the 1980s when it was sold to Independent Newspapers Limited (INL).

Check - TIME OUT GAME TOKEN

New Zealand - Token Circa 1970's

Reg. No: TMR - T20

(large token)

Summary:

New Zealand

No value:- (AD)

Mint: not recorded.

Discipline: Numismatics**More information****Tagged with:** Gaming tokens**Themes this item is part of:** Numismatics & Philately Collection**Primary Classification:** Tokens**Secondary Classification:** New Zealand**Tertiary Classification:** Checks**Denomination:** No cash value**Inscriptions:**

(Edge) Plain

(Obverse) No Cash Value / Game / TIMEOUT / Token /

New Zealand

(Reverse) www.timezonegames.co.nz / Timeout / Token / Great Fun.Great Value**Shape:** Round**Size:** 26.04 mm - 26.06 mm**Material:** Nickel**Weight:** 7.2 grams**Issued By:** Time Out
Auckland

Time Out Arcade Token NZ



TimeOut Arcade Manukau
5.0 (1) Video Arcade
Manukau Mall

TimeOut Arcade Westcity
No reviews Video Arcade
Auckland
09-846 4040

Check - TIME OUT LEISURE CENTRE. NZ**New Zealand - Token Circa 1970's**

Reg. No: TMR - T21

Summary:

New Zealand

No value:- (AD)

Mint: not recorded.

Discipline: Numismatics**More information****Tagged with:** Gaming tokens**Themes this item is part of:** Numismatics & Philately Collection**Primary Classification:** Tokens**Secondary Classification:** New Zealand**Tertiary Classification:** Checks**Denomination:** No cash value**Inscriptions:** (Edge) Plain
(Obverse) Time Out Leisure Centres / New Zealand / TIME OUT / Great Fun - Great Value

(Reverse) Game Token / GAME / No Cash Value

Shape: Round**Size:** 20.34 mm–20.32 mm**Material:** Brass**Weight:** 4.6 grams**Issued By:** Time Out

Check - TIME OUT LEISURE CENTRE. NZ**New Zealand - Token Circa 1970's**

Reg. No: TMR - T22

Summary:

New Zealand

No value:- (AD)

Mint: not recorded.

Discipline: Numismatics**More information****Tagged with:** Gaming tokens**Themes this item is part of:** Numismatics & Philately Collection**Primary Classification:** Tokens**Secondary Classification:** New Zealand**Tertiary Classification:** Checks**Denomination:** No cash value**Inscriptions:** (Edge) Plain
(Obverse) Time Out Leisure Centres / New Zealand / TIME OUT / Great Fun - Great Value
(Reverse) Non / Negotiable / GAME / TOKEN / Non / Redeemable**Shape:** Round**Size:** 20.35 mm**Material:** Brass**Weight:** 4.5 grams**Issued By:** Time Out
Auckland

Check - TIME OUT LEISURE CENTRE. NZ**New Zealand - Token Circa 1970's**

Reg. No: TMR - T23

Summary:

New Zealand

No value:- (AD)

Mint: not recorded.

Discipline: Numismatics**More information****Tagged with:** Gaming tokens**Themes this item is part of:** Numismatics & Philately Collection**Primary Classification:** Tokens**Secondary Classification:** New Zealand**Tertiary Classification:** Checks**Denomination:** No cash value**Inscriptions:** (Edge) Plain
(Obverse) Time Out Leisure Centres / New Zealand / TIME OUT / Great Fun - Great Value
(Reverse) Non / Negotiable / GAME / TOKEN / Non / Redeemable**Shape:** Round**Size:** 20.33 mm**Material:** Brass**Weight:** 4.5 grams**Issued By:** Time Out
Auckland

Check - TIME OUT LEISURE CENTRE. NZ

New Zealand - Token Circa 1970's

Reg. No: TMR - T24

Summary:

New Zealand

No value:- (AD)

Mint: not recorded.

Discipline: Numismatics

More information

Tagged with: Gaming tokens

Themes this item is part of: Numismatics & Philately Collection

Primary Classification: Tokens

Secondary Classification: New Zealand

Tertiary Classification: Checks

Denomination: No cash value

Inscriptions: (Edge) Plain
(Obverse) Time Out Leisure Centres / New Zealand / TIME OUT / Great Fun - Great Value

(Reverse) Game Token / GA1ME / No Cash Value

Shape: Round

Size: 20.33 mm

Material: Brass

Weight: 4.5 grams

Issued By: Time Out
Auckland



Check - TIME ZONE formerly TIME OUT N.Z. New Zealand - Token Circa 1978

Reg. No: TMR - T25

Summary:

New Zealand
No value (AD)
Mint: not recorded.

Discipline: Numismatics

More information

Tagged with: Gaming tokens

Themes this item is part of: Numismatics & Philately Collection

Primary Classification: Tokens

Secondary Classification: New Zealand

Tertiary Classification: Checks

Denomination: No cash value

Inscriptions: (Edge) Plain
(Obverse) TIME ZONE NEW ZEALAND
(Reverse) GREAT VALUE GREAT FUN

Shape: Round

Size: 20.28 mm

Material: Brass

Weight: 4.5 grams

Issued By: COIN CASCADE LTD
NEW ZEALAND.





THE HISTORY..

Timezone (formerly Time Out) entertainment centers have been in New Zealand and around Asia since 1978. Internationally there are over 200 Timezone stores operating in Australia, India, Indonesia, the Philippines, Singapore, Vietnam and of course New Zealand.

Coin Cascade Ltd is the franchise holder for Timezone in New Zealand and is also the single largest importer, manufacturer and distributor of electronic coin-operated entertainment equipment in New Zealand www.coincascade.co.nz

WHAT IS TIMEZONE?

It's simple. Timezone is fun and exciting!

Timezone Entertainment Centres have the latest interactive entertainment, video games and high tech prize machines. A great place to keep the kids amused or to hang out with your mates. Timezone is all about fun and excitement - no matter what age or gender there's always a game for everyone.

HOW TIMEZONE WORKS

Timezone uses the 'Powercard' card which replaces traditional coins and tokens with a sophisticated but simple card which enables you to monitor how much you are spending and us to give you great offers!

Instead of carrying round pockets full of coins your credit is loaded onto a Powercard. In order to play a machine simply swipe your Powercard at the coloured swiper mounted on the machine and the credit will be deducted from the card automatically.



[Home](#)
[New Games](#)
[Game Sales»](#)
[Prize Stock»](#)
[Hire»](#)
[Profit Share](#)
[Franchise](#)
[Contact Us](#)
[TimeZone Games](#)

Coin Cascade - Coin Operated Amusement, Video & Arcade Games

Welcome to Coin Cascade



New Zealand's finest source of coin operated games

Founded in 1978, Coin Cascade Ltd is New Zealand's largest importer, manufacturer and distributor of coin operated amusement games, machines, parts and prizes for sale or hire to the family entertainment industry. We have a wide variety of amusement machines such as video and arcade games, simulator machines, prize vending machines such as cranes as well as traditional games such as pinball, pool and air hockey tables. With offices in the major cities and a team of experienced industry professionals, Coin Cascade Ltd offers up-to-the-minute advice, technical support and game equipment.

Coin Cascade Ltd operates the nationwide chain of Timezone Games family entertainment centres and Timeout games areas. As well as two Auckland bowling centres Xtreme Entertainment and Tenpin Takapuna. This provides an unparalleled experience of games, their operation and performance.

Check - TIP TOP BREAD (1) WELLINGTON**New Zealand - Token Circa 1966–1969**

Reg. No: TMR - T26

Summary:

New Zealand

No denomination (AD)

Mint: Precision Engineering Co Ltd, of Rongotai NZ

Officially made for Denhard Bread Delivery. Later taken over by Tip Top Bread, Newton Wellington

Discipline: Numismatics**More information****Tagged with:** Bread tokens**Themes this item is part of:** Numismatics & Philately Collection**Primary Classification:** Tokens**Secondary Classification:** New Zealand**Tertiary Classification:** Checks**Denomination:** One loaf**Inscriptions:** (edge) PLAIN
(Obverse) TIPTOP 1 BREAD
(Reverse) ONE LOAF**Shape:** Square**Size:** 16.35–16.43 mm**Material:** Bronze**Weight:** 2.2 grams**Issued By:** DENHARD BREAD DELIVERY

Check - TIP TOP BREAD (2) WELLINGTON

New Zealand - Token Circa 1963–1969

Reg. No: TMR - T27

Summary:

New Zealand

No denomination(AD)

Mint: Precision Engineering Co Ltd of Rongotai NZ.

Officially made for Denhard Bread Delivery. Later taken over by Tip Top Bread, Newton Wellington

Discipline: Numismatics

More information

Tagged with:	Produce tokens
Themes this item is part of:	Numismatics & Philately Collection
Primary Classification:	Tokens
Secondary Classification:	New Zealand
Tertiary Classification:	Checks
Denomination:	One loaf
Inscriptions:	(edge) PLAIN (Obverse) TIPTOP 2 BREAD (Reverse) ONE LOAF
Shape:	Square
Size:	16.60 mm
Material:	Bronze-Ni-Plate
Weight:	2.2 grams
Issued By:	DENHARD BREAD DELIVERY



Check - TIP TOP BREAD (3) WELLINGTON**New Zealand - Token Circa 1963–1969**

Reg. No: TMR - T28

Summary:

New Zealand

No denomination(AD)

Mint: Precision Engineering Co Ltd of Rongotai NZ

Officially made for Denhard Bread Delivery. Later taken over by Tip Top Bread, Newton Wellington

Discipline: Numismatics**More information****Tagged with:** Produce tokens**Themes this item is part of:** Numismatics & Philately Collection**Primary Classification:** Tokens**Secondary Classification:** New Zealand**Tertiary Classification:** Checks**Denomination:** One loaf**Inscriptions:**
(Edge) PLAIN
(Obverse) TIPTOP 3 BREAD
(Reverse) ONE LOAF**Shape:** Square**Size:** 16.55 mm**Material:** Bronze-Ni-Plate**Weight:** 2.2 grams**Issued By:** DENHARD BREAD DELIVERY



Baking Division NZ



History

For more than 50 years, George Weston Foods has been a proud part of the New Zealand and Australian marketplace.

Our story began in the early 1950's. George Weston Foods purchased Stormont's Bakery in Kingsland Auckland, and launched the Tip Top Bread brand into New Zealand.

Within New Zealand, Tip Top is an icon. But, what many people may not realise is that Tip Top bread and Tip Top ice-cream are not made by the same company. The Tip Top Bread Company is owned by Allied Foods, who are a subsidiary of George Weston Foods in Australia. (GWF also market Tip Top Bread in Australia).



GWF then purchased Taylor's Bakery in Northcote, and later Denhards in Wellington. In the mid-eighties, North's Bakeries in Christchurch and Dunedin were also added to the group.

Sadly, in 1997 the Stormont's Bakery burnt down but was soon replaced by a state-of-the-art bakery in Otahuhu.

Today, the business employs more than 500 people in five manufacturing sites. All together each site produces more than 1.2M loaves of bread, buns, rolls, muffins and crumpets per week. Our brands include Tip Top white bread, Burgen, Ploughmans, Big Ben, Golden, Bazaar and Spicy Fruit.

We are extremely proud of our heritage, and are very excited about our future within New Zealand.



Check -TJ's CAR WASH. AUCKLAND

New Zealand - Token Circa 2000's

Reg. No: TMR - T29

Summary:

New Zealand
Penny(AD) No value
Mint: not recorded US

Discipline: Numismatics

More information

Tagged with: Produce tokens/Car Wash

Themes this item is part of: Numismatics & Philately Collection

Primary Classification: Tokens

Secondary Classification: New Zealand

Tertiary Classification: Checks

Denomination: No value

Inscriptions: (Edge) Plain
(Obverse) TJ'S Car Wash
(Reverse) Carwash (old car) Token

Shape: Round

Size: 25.40 mm

Material: C&N

Weight: 4.6 grams

Issued By: TJ's Car Wash
Botany Downs, Auckland



TJ's Car Wash, Botany Downs. Auckland. Circa 2000-2014



Check -Travel – Safe NZ Dunedin New Zealand - Token Circa 2000's – 2007

Reg. No: TMR - T30

Summary:
New Zealand
No Value(AD)
Mint: not recorded
Discipline: Numismatics

Tranquility Beauty Therapy Clinic
Centre City Mall, 123 Great King St. Dunedin
Now uses this token's phone number.
As from 2007

More information

Tagged with: Advertising Token

Themes this item is part of: Numismatics & Philately Collection

Primary Classification: Tokens

Secondary Classification: New Zealand

Tertiary Classification: Checks

Denomination: No value

Inscriptions: (Edge) Plain
(Obverse) Travel – Safe / Fax 03 4740 112 / Ph 03 4740 101 / NZ
(Reverse) Blank

Shape: Round (Uniface holed)

Size: 28.75 mm 28.83 mm

Material: Hard plastic

Weight: 1.6 grams

Issued By: Travel – Safe
Dunedin



Check -TREMAINE CAR WASH. PALMERSTON Nth New Zealand - Token Circa 2000's

Reg. No: TMR - T31

Summary:

New Zealand
Penny(AD) No value
Mint: not recorded US

Discipline: Numismatics

More information

Tagged with: Produce tokens/Car Wash

Themes this item is part of: Numismatics & Philately Collection

Primary Classification: Tokens

Secondary Classification: New Zealand

Tertiary Classification: Checks

Denomination: No value

Inscriptions: (Edge) Plain
(Obverse) Tremaine. Carwash
(Reverse) Carwash (old car) Token

Shape: Round

Size: 25.41 mm

Material: C&N

Weight: 5.8 grams

Issued By: Tremaine Car Wash
667 Tremaine Ave. Palmerston Nth



Tremaine Car Wash, Palmerston Nth. 4414 Circa 2000's – 667 Tremaine Avenue.
Dog and Car Wash



car wash tremaine ave palmerston north - Google Search

Check -TROOPSHIP, No 5 NZ Souvenir New Zealand - Token Circa 1914

Reg. No: TMR - T32

Summary:

New Zealand
Penny(AD) No value
Mint: not recorded

Discipline: Numismatics

More information

Tagged with: Token

Themes this item is part of: Numismatics & Philately Collection

Primary Classification: Tokens

Secondary Classification: New Zealand

Tertiary Classification: Checks

Denomination: No value

Inscriptions: (Edge) Plain
(Obverse) Souvenir / Troopship / No 5 / N.Z. / 1914
(Reverse) Blank

Shape: Round

Size: 19.73 mm 20.03 mm

Material: White metal

Weight: 4.3 grams

Issued By: New Zealand War Department
Wellington



Troopships that departed New Zealand during World War One

The ships were manned by their civilian officers and ratings, the distinction given to them was a button-hole badge which declared that they were serving on New Zealand Transports.

The ships belonged to a variety of companies as can be seen in the ten vessels chartered for the main body.

The *Maunganui* and *Tahiti* belonged to the Union Steamship Company (New Zealand), the *Arawa*, *Athenic* and *Waimana* to the Shaw Savill and Albion Company (Britain), the *Star of India* and *Hawkes Bay* to the Commonwealth and Dominion Line (Australia),

the *Ruapehu* and *Orari* to the New Zealand Shipping Company (New Zealand) and the *Limerick* to the New Zealand and African Steamship Company (Britain). The ships were manned by their civilian officers and ratings, the distinction given to them was a button-hole badge which declared that they were serving on New Zealand Transports.

First World War Troopships that Departed New Zealand.

No.	Ship	Departed	Reinforcement
01	Moeraki	15 Aug 14	Samoa Advance
02	Maunganui	15 Aug 14	Samoa Advance
03	Maunganui	16 Oct 14	Main Body
04	Tahiti	16 Oct 14	Main Body
05	Ruapehu	16 Oct 14	Main Body
06	Orari	16 Oct 14	Main Body
07	Limmerick	16 Oct 14	Main Body
08	Star of India	16 Oct 14	Main Body
09	Hawkes Bay	16 Oct 14	Main Body
10	????	????	Main Body

Check -Trott, Claude, N.Z. Army Tag WW1 New Zealand - Token Circa 1914-18

Reg. No: TMR - T33

Summary:

New Zealand
Penny(AD) No value
Mint: not recorded

Discipline: Numismatics

More information

Tagged with: Token/ Tag

Themes this item is part of: Numismatics & Philately Collection

Primary Classification: Tokens

Secondary Classification: New Zealand

Tertiary Classification: Checks

Denomination: No value

Inscriptions: (Edge) Plain, Very thin
(Obverse) N.Z. / 12852 / Trott.C / CE / N.Z.F.A.
(Reverse) Blank

Shape: Round, Uniface

Size: 38.81 mm 38.90 mm

Material: Tin

Weight: 3.6 grams

Issued By: New Zealand War Department
Wellington. N.Z.



Fletcher, J. A., 18643, N.Z.F.A. (Mrs.
 J. M. Thomas, Wairoa, s.)
 Trott, C., 12852, N.Z.F.A. (C. Henricks,
 Taihape, u.) Wounded

NEW ZEALAND CASUALTIES

Papers Past / Newspapers / Evening Post / 16 April 1918

Claude Trott

Claude Trott - Online Cenotaph - Auckland War Memorial Museum

Unknown date of birth

Identity ▼

ABOUT

FORENAMES Claude AWMM

SURNAME Trott AWMM

SERVICE NUMBER WWI 12852 AWMM

GENDER Male AWMM Auckland War Memorial Museum

Civilian life ▼

ABOUT BIRTH

NEXT OF KIN ON EMBARKATION C. Heinrichs (uncle), Times Office, Taihape,

Service ▼

WARS AND CONFLICTS

WAR World War I, 1914-1918 AWMM

ARMED FORCE / BRANCH Army AWMM

SERVICE NUMBER WWI 12852 AWMM

TRAINING AND ENLISTMENT

ENLISTMENT WWI Unknown AWMM Farmer/Civilian AWMM

EMBARKATIONS

EMBARKATION DETAILS WWI 27 May 1916 AWMM from AWMM
 HMNZT 54 or HMNZT 55 AWMM Vessel was Willochra or Tofua
AWMM Gunner/Military AWMM 13th Reinforcements, New Zealand
 Field Artillery AWMM New Zealand Expeditionary Force AWMM

Check -TSF**New Zealand - Token Circa 1920'S**Reg. No: TMR - T34

Summary:

New Zealand

Penny (AD)

Mint: Not known

Discipline: Numismatics

More information**Tagged with:** Produce tokens**Themes this item is part of:** Numismatics & Philately Collection**Primary Classification:** Tokens**Secondary Classification:** New Zealand**Tertiary Classification:** Checks**Denomination:** 6d**Inscriptions:** (edge) Plain
(Obverse)
(Reverse)**Shape:** Oval**Size:** 40 mm x 32 mm**Material:** Copper**Weight:** ?? grams**Issued By:** TSF**Thornton, Smith & Firth.****Wharf Mill, Queen St. Auckland**

Between Customs St & Swanson St. (Built 1861)

Check - F.W.TUCKER, CHRISTCHURCH

New Zealand - Token 1906-07

Reg. No: TMR - T35

Summary:

New Zealand
 No value (AD)
 Mint: not recorded.

Discipline: Numismatics

More information

Tagged with: Jewellery tokens

Themes this item is part of: Numismatics & Philately Collection

Primary Classification: Tokens

Secondary Classification: New Zealand

Tertiary Classification: Checks

Denomination: Jeweller

Inscriptions: (edge) Plain
 (Obverse) NEW ZEALAND INTERNATIONAL EXHIBITION.
 (Reverse) Mirror reverse inset

Shape: Round

Size: 39 mm

Material: Aluminium

Weight: ?? grams

Issued By: F.W.TUCKER, JEWELLER,
 225 HIGH ST. CHRISTCHURCH



PAPERSPAST

[Papers Past Home](#) [Introduction](#) [Search](#) [Browse](#)

Papers Past > Colonist > 11 April 1914 > Page 5 > [A JEWELLERY ROBBERY.](#)

A JEWELLERY ROBBERY.

Colonist, Volume LVI, Issue 13440, 11 April 1914, Page 5

[About this newspaper](#)

[View computer-generated text](#)

A JEWELLERY ROBBERY.
RINGS WORTH £1000 STOLEN
[UNITED PRESS ASSOCIATION.]

Christchurch, April 9.

Last night, or early this morning, Mr F. W. Tucker, a jeweller in High street, had his shop entered and rings to the value of £1000 abstracted. Mr Tucker left the premises securely locked up at 6 p.m. last night. When he arrived at 8.30 this morning he found that every ring in the window had gone—their total value being £1000—whilst every other article of jewellery had been left untouched. Even the safe, containing a considerable amount of cash, had not been tampered with. It was by means of a skylight that the thief is presumed to have entered the shop. The skylight has remained open ever since Mr Tucker took possession of the shop, but the opening is small, and it would require a very small person to wriggle through it.

Papers Past — Press — 10 February 1905

Page 1 Advertisements Colu...

GENUINE Cash Sale of Jewellery. 4s allowed off every £1. For a few weeks we are offering our Stock of Watches, Jewellery, Silver Plate, etc., at a Great Cash Discount of 20 per cent. See window for Reduced Prices. Our 20s Lever Watches reduced to 16s. Gold-mounted Greenstone Hearts reduced from 22s 6d to 18s. Gem and Engagement Rings. £1 saved in every £5. Our £3 Silver Lever Watches now at 48s. Ansonia Watches 4s 6d. Ladies' Waterbury 15s. Purses and Silver Plate selling at same reduced rate. F. W. TUCKER, Jeweller, 226 High street. F

Check - Tui, Est. IN MANGATAINOKA, 1889**New Zealand - Token Circa 1900's**

Reg. No: TMR - T36

Summary:

New Zealand
 Penny(AD) no value
 Mint: not recorded.

Discipline: Numismatics

More information

Tagged with: Produce tokens

Themes this item is part of: Numismatics & Philately Collection

Primary Classification: Tokens

Secondary Classification: New Zealand

Tertiary Classification: Checks

Denomination: No value

Inscriptions: (Edge) Plain ring around
 (Obverse) Tui.
 (Reverse) Established in Mangatainoka 1889

Shape: Round

Size: 29.16 mm–29.50mm

Material: Brass

Weight: 11.1 grams

Issued By: Tui



Tui Mangatainoka Token

Mangatainoka is a small settlement in the Tararua District of New Zealand's North Island. It is located on the banks of the Mangatainoka River, 5 km (3.1 mi) north of Pahiatua. The 2001 New Zealand Census of Population and Dwellings gave its population as 1,617, consisting of 858 males and 759 females, representing a decline of 7.4% or 129 people since the 1996 census.^[1] However, this figure covers not only the Mangatainoka township, but also the rural area on all sides of Pahiatua, and this includes other small settlements that are not part of Mangatainoka proper.^[2]

Mangatainoka

Tui Brewery

Mangatainoka is home to the nationally famous Tui Brewery. The community facilities include a hotel, school, golf course (Pahiatua), railway station on the Wairarapa Line.

Railway history

The railway was opened to Mangatainoka in August 1897 and the settlement was briefly the terminus of the Wairarapa Line until the final section to a junction with the Palmerston North–Gisborne Line in Woodville was opened on 11 December 1897.^[3] Passenger train services were originally provided by the Napier Express until it was re-routed via the former Wellington and Manawatu Railway Company's western line through the Kapiti Coast and Horowhenua in early 1909.^[4] It was replaced by the Wairarapa Mail, which served Mangatainoka until 1948, when it was fully replaced by the NZR RM Wairarapa class railcars that had begun operating some services in 1936.^[5] Standard and 88 seater class railcars also operated to Mangatainoka, especially after the Wairarapa railcars were withdrawn in the wake of the Rimutaka Incline's 1955 closure. Carriage trains through Mangatainoka were reintroduced in 1964 but did not fully replace the railcars until 1977. As roads in the area improved through the 1980s, passenger numbers declined and all services north of Masterton ceased on 29 July 1988. Since this time, only freight trains have regularly operated through Mangatainoka; passenger services have been limited to occasional excursions, typically organised by enthusiast societies.^[6]



Check - UNION AIRWAYS of N.Z. LTD
New Zealand - Token Circa-- Founded 1935

Reg. No: TMR - U1

Summary:

New Zealand

Value: No value

Mint: Not recorded.

Discipline: Numismatics

Union Airways Tool check

More information

Tagged with: Tool check/ tokens

Themes this item is part of: Numismatics & Philately Collection

Primary Classification: Tokens

Secondary Classification: New Zealand

Tertiary Classification: Checks

Denomination: No value

Inscriptions: (Edge) Plain
 (Obverse) Union Airways Ltd / Tool / Check / 41 in rectangle
 (Reverse) Blank

Shape: Round (uniface) Holed

Size: 31.89mm–31.96mm

Material: Brass

Weight: 9.4 grams

Issued By: UNION AIRWAYS
 Head Quarters, DUNEDIN



Union Airways of N.Z. Ltd

Union Airways of New Zealand Limited was New Zealand's first major airline. Founded in 1935 by local shipping giant Union Steam Ship Company of New Zealand. Its services reached main centres from Auckland to Dunedin and extended to Gisborne and the West Coast of the South Island. Union Airways was instrumental in the establishment of Australian National Airways and TEAL.

After the Second World War New Zealand's government nationalised Union Airways forming New Zealand National Airways Corporation taking over on 31 March 1947 all Union Airways operations assets and facilities and adding them to those taken from other local airlines.

The provenance of this token is not.
"IN QUESTION"

The New Zealand (NAC TOKEN)
which followed the Union Airways token.
Is exactly the same, size, style, wording,
and even the hole is in the same place.



De Havilland DH86 Express Karoro



Lockheed L.10A ZK-AGK Delivered to Union Airways in 1937 and later transferred to NZNAC. The aircraft was named "Kaku". It was tragically lost in a crash on Mt. Ruapehu on 23/10/1948 killing all thirteen occupants. Photographed at Wellington 1938-39.

Union Airways of New Zealand Limited



Union Airways' Karoro at Milson c.
4 November 1936

Founded	April 1935
Commenced operations	15 January 1936
Ceased operations	31 March 1947
Operating bases	Mangere, Milson, Rongotai, Taieri
Secondary hubs	Palmerston North
Focus cities	Auckland, Wellington, Christchurch, Dunedin
Alliance	ANA, TEAL Union Company, P & O
Subsidiaries	Cook Strait Airways, Air Travel (NZ), East Coast Airways, TEAL (associates)
Parent company	P & O
Headquarters	Dunedin
Key people	F Maurice Clarke, Norris Falla

In March 1935 Union Steam Ship Company of New Zealand, subsidiary of P & O, applied to New Zealand's Transport Coordination Board for a licence to operate a national trunk airline service together with three other companies: New Zealand Airlines of New Plymouth; Dominion Airways of Auckland (together they were Great Pacific Airways); and New Zealand Airways of Dunedin.^[1] The facilities at Rongotai being inadequate it was proposed the service would operate between Auckland, Milson (Palmerston North), Blenheim, Christchurch and Dunedin. In May having won a first licence to fly between Palmerston North and Dunedin (calling at Blenheim and Christchurch) Union Steam formed Union Airways Limited keeping for itself 600 of the planned issue of 1000 shares. The new Great Pacific Airways covered the rest of the North Island though, again, not Wellington and shared the South Island calls. There were strong protests from the Wellington resident Coordination Board member. Licence applications for other routes from other sponsors were firmly opposed by Union Steam.

Government subsidy

The general public seemed unaware that no other country had commercial flying services without government subsidy. Only in United States were military and civil aviation clearly separated though civil was still subsidised. For their Brisbane-Darwin-Singapore service operating the same DH86 aircraft QANTAS Empire Airways received a greater subsidy per mile than proposed for the trunk route. The board had been directed to take into account the value of the usefulness of all the proposed airways facilities for auxiliary defence purposes.

Aircraft

It was widely reported Union Airways had purchased three four-engined De Havilland DH86 airliners which could carry from ten to fourteen passengers together with ample mail and baggage space. Delivery would take place in September and October and they would enter service in December 1935 cruising at 145 to 150 miles per hour.

A Miles Falcon single engined monoplane designed to carry a pilot and two passengers was bought in Reading, Berkshire in August for service or, in emergency, air taxi work. It was to be fitted with the larger 6-cylinder 200 h.p. Gipsy engine used in the new DH86 aircraft.

In November and December 1935 the new aircraft were assembled in a new hangar at Wigram Aerodrome. Their names were reported to be *Karoro*, *Kotuku* and *Korimako*

Battle of Routes

Meanwhile, through the Transport Coordination Board, Union Airways with its commercially strong backing blocked and continued to block the other airline, Great Pacific, from landing at Palmerston North leaving the Gisborne-Hawkes Bay feeder airlines with a restricted service. Their passengers would have to travel north by rail. Union Airways under their postal contract collected mail from the overnight Limited Express train at Palmerston and took it to the South Island and required no air link to Auckland. The board "caused perturbation" in the North Island by noting the most important trunk route would be between Palmerston North and Dunedin. Later newspapers produced articles about the working time saved by an Auckland businessman heading for Christchurch and travelling to Palmerston North by overnight train when compared with a flight originating in Auckland the following morning which would land him in Christchurch much later that day.

New Zealand Airways, operators of a scheduled service from Wellington to Blenheim, lost their licence to the route to Cook Strait Airways and were reduced to taxi work. In response to questions put by Mr Walter Nash in parliament the Minister responded that while New Zealand Airways had talked of raising a large sum of new capital and replacing obsolete aircraft "the backing of Union Airways was very substantial". The decision had been made by the board said Mr Coates.

Christmas 1945 and nationalisation

By the end of 1945 the government's intention to create a national airways corporation to monopolise civil aviation services had become The New Zealand National Airways Act.

NAC

New Zealand National Airways Corporation began business on 1 April 1947. The general manager of Union Airways took the same role in the new NAC. The aircraft, timetables and support services and most personnel were simply moved to the new operation.



Lockheed Lodestar

SOME INFORMATION OF INTEREST.

There was also a Union Airways in South Africa, nothing to do with the New Zealand. Union Airways

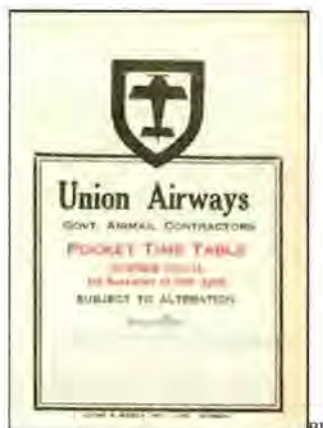
Union Airways

Union Airways of South Africa was the first South African commercial airline. It operated as an independent company for five years, from 1929 to 1934, before being taken over by the government as South African Airways.

Union Airways

South Africa

airline baggage labels



History

Union Airways were founded by Major Allister Miller, a World War I flying ace, who had recruited some 2000 South Africans for service in the Royal Air Force. The word "Union" referred to the official name of the country at that time: the Union of South Africa.

The company was financed by the Atlantic Refining Company, and supported by a small government subsidy. Its headquarters were initially at Fairview in Port Elizabeth, but they later moved to Stamford Hill in Durban. The corporate colours were red and yellow, and the logo was a shield depicting a stylised aircraft.

Union Airways was primarily a mail carrier, but from September 1929 it also transported passengers.

The fleet originally consisted of five DH60 Gipsy Moths. A Fokker Super Universal and two DH Puss Moths were added in 1930, but all three crashed during 1931, two of the crashes being fatal.

To replace them, Union Airways acquired some Junkers from South West African Airways, which was owned by the Junkers corporation in Germany. In 1932, UA and SWAA amalgamated, although they continued to operate under their individual names. Later that year, Irish playwright George Bernard Shaw celebrated his seventy-fifth birthday with a flight in one of the Junkers. In 1933, Union Airways placed a Junkers at the disposal of deputy prime minister General Jan Smuts for an election tour.

Union Airways



Union Airways PTY LTD

Founded	24 July 1929
Commenced operations	26 August 1929
Ceased operations	31 January 1934
Hubs	Cape Town
Fleet size	8 (maximum)
Headquarters	Port Elizabeth Durban
Employees	40

Check - 40 Shillings, United Farmers Co-operative Association - New Zealand - Token Circa 1900'S

Reg. No: TMR - U2

Summary:

New Zealand
Shilling (AD)
Mint: not recorded.

Discipline: Numismatics

More information

Tagged with: Produce tokens

Themes this item is part of: Numismatics & Philately Collection

Primary Classification: Tokens

Secondary Classification: New Zealand

Tertiary Classification: Checks

Denomination: 40 Shillings

Inscriptions: (edge) Plain
(Obverse) United Farmers Co-operative Association (40/-Limited)
(Reverse) United Farmers Co-operative Association (40/-Limited)

Shape: Round

Size: 31.85 mm

Material: White metal

Weight: 11.4 grams

Issued By: United Farmers
Co-operative Association



Check - 20 Shillings, United Farmers Co-operative Association - New Zealand - Token Circa 1900'S

Reg. No: TMR - U3

Summary:

New Zealand
Shilling (AD)
Mint: not recorded.

Discipline: Numismatics

More information

Tagged with: Produce tokens

Themes this item is part of: Numismatics & Philately Collection

Primary Classification: Tokens

Secondary Classification: New Zealand

Tertiary Classification: Checks

Denomination: 20 Shillings

Inscriptions: (edge) Plain
(Obverse) United Farmers Co-operative Association (20/- Limited)
(Reverse) United Farmers Co-operative Association (20/- Limited)

Shape: Round

Size: 31.01mm – 31.04 mm

Material: White metal

Weight: 9.8 grams

Issued By: United Farmers
Co-operative Association



Check - 10 Shillings, United Farmers Co-operative Association - New Zealand - Token Circa 1900's

Reg. No: TMR - U4

Summary:

New Zealand
Value: Shilling (AD)
Mint: Not recorded.

Discipline: Numismatics

More information

Tagged with: Produce tokens

Themes this item is part of: Numismatics & Philately Collection

Primary Classification: Tokens

Secondary Classification: New Zealand

Tertiary Classification: Checks

Denomination: 10 Shillings (10/-)

Inscriptions: (Edge) Plain
(Obverse) United Farmers Co-operative Association (10/- Limited)
(Reverse) United Farmers Co-operative Association (10/- Limited)

Shape: Round

Size: 23.47 mm –23.50mm

Material: Cupro–nickel

Weight: 5.6 grams

Issued By: UNITED FARMERS
CO-OPERATIVE ASSOCIATION



Check - 5 Shillings, United Farmers Co-operative Association - New Zealand - Token Circa 1900'S

Reg. No: TMR - U5

Summary:

New Zealand
Shilling (AD)
Mint: not recorded.

Discipline: Numismatics

More information

Tagged with: Produce tokens

Themes this item is part of: Numismatics & Philately Collection

Primary Classification: Tokens

Secondary Classification: New Zealand

Tertiary Classification: Checks

Denomination: 5 Shillings

Inscriptions: (edge) Plain
(Obverse) United Farmers Co-operative Association (5/- Limited)
(Reverse) United Farmers Co-operative Association (5/- Limited)

Shape: Round

Size: 32 mm

Material: Brass

Weight: 10.9 grams

Issued By: United Farmers,
Co-operative Association



Check - 2/6 Shillings, United Farmers Co-operative Association - New Zealand - Token Circa 1900'S

Reg. No: TMR - U6

Summary:

New Zealand
Shilling (AD)
Mint: not recorded.

Discipline: Numismatics

More information

Tagged with: Produce tokens

Themes this item is part of: Numismatics & Philately Collection

Primary Classification: Tokens

Secondary Classification: New Zealand

Tertiary Classification: Checks

Denomination: 2/6 Shillings

Inscriptions: (edge) Plain
(Obverse)) United Farmers Co-operative Association (2/6 Limited)
(Reverse)) United Farmers Co-operative Association (2/6 Limited)

Shape: Round

Size: 31.86 mm

Material: Brass

Weight: 10.2 grams

Issued By: United Farmers,
Co-operative Association



Check - 2 Shillings, United Farmers Co-operative Association - New Zealand - Token Circa 1900'S

Reg. No: TMR - U7

Summary:

New Zealand
Shilling (AD)
Mint: not recorded.

Discipline: Numismatics

More information

Tagged with: Produce tokens

Themes this item is part of: Numismatics & Philately Collection

Primary Classification: Tokens

Secondary Classification: New Zealand

Tertiary Classification: Checks

Denomination: 2 Shillings

Inscriptions: (edge) Plain
(Obverse) United Farmers Co-operative Association (2/- Limited)
(Reverse) United Farmers Co-operative Association (2/- Limited)

Shape: Round

Size: 29.70 mm

Material: Brass

Weight: 8.6 grams

Issued By: United Farmers,
Co-operative Association



Check - 1 Shilling, United Farmers Co-operative Association - New Zealand - Token Circa 1900'S

Reg. No: TMR - U8

Summary:

New Zealand
Shilling (AD)
Mint: not recorded.

Discipline: Numismatics

More information

Tagged with: Produce tokens

Themes this item is part of: Numismatics & Philately Collection

Primary Classification: Tokens

Secondary Classification: New Zealand

Tertiary Classification: Checks

Denomination: 1 Shilling

Inscriptions: (edge) Plain
(Obverse) United Farmers Co-operative Association (1/- Limited)
(Reverse) United Farmers Co-operative Association (1/- Limited)

Shape: Round

Size: 28.02 mm

Material: Brass

Weight: 7.4 grams

Issued By: United Farmers,
Co-operative Association



Check - United Farmers Co-operative Association - New Zealand - Token Circa 1900'S

Reg. No: TMR - U2 toU8 Notes

Summary:

New Zealand
Shilling (AD)
Mint: not recorded.

Discipline: Numismatics

More information

The Co-op paid a rebate on purchases, most sales were “booked” on credit.

Tokens were given to share-holders who paid cash for their purchases so that an accurate record could be kept of the transactions.

The tokens were returned once a year by the shareholders to add to “book” purchases.

This system ensured that both cash and credit customers received the full refund benefits to which they were entitled.

The tokens could not be spent.

Because they were worth only a small part of their face value, 1/- and 2/- were quite commonly not redeemed, the 10/- and 20/- were usually redeemed as they had significant value, so are much scarcer.

Issued By: United Farmers,
Co-operative Association

Check - United Farmers Co-operative
Association - New Zealand - Token Circa 1900'S

**THE UNITED FARMERS' CO-OPERATIVE ASSN.
LIMITED, FEILDING,**

Have in stock and are now offering for the coming season—

Full Samples of Seed Grain,

COMPRISING:

WHEAT, OATS, BARLEY, PEAS, BEANS, &c, &c.,

All of which have been CAREFULLY SELECTED and MACHINE-DRESSED

OATS—Sparrowbill, Danish, Canadians, Sutherlands, Dunns, Black Tartarians,
long and short White Tartarians.

WHEAT—Winter and Spring varieties.

BUCKWHEAT—Ryecorn,

BARLEY—Chevalier and Cape.

Linsed, Maize, Horse Beans, Broad Beans.

PEAS—Blue Prussian, White Pearl, Grey Partridge, Stratagom, Veitch Perfection.

Also, a large and well-selected stock of

Yates' Celebrated Vegetable and Flower Seeds.

POTATOES—Early Seed Varieties, Early Rose, White Elephants, Beauty of
Hebron, Snowflakes, White Flukes, &c.

CASH BUYERS of every description of DAIRY PRODUCE.

Get our Cash Price List and compare with other prices.

UNITED FARMERS' CO-OP.

...

...

...

Feilding.



No known Copyright

Please acknowledge ' Sir George Grey Special Collections, Auckland

Check -VESTA BATTERIES, WELLINGTON**New Zealand - Token Circa 1920's---1930's**

Reg. No: TMR - V1

Summary:

New Zealand

Penny(AD)

Mint: not recorded.

Discipline: Numismatics**More information**

Tagged with:	Bar Spinner
Themes this item is part of:	Numismatics & Philately Collection
Primary Classification:	Tokens
Secondary Classification:	New Zealand
Tertiary Classification:	Checks
Denomination:	No value
Inscriptions:	(Edge) Plain (Obverse) Always use VESTA BATTERIES and pay less (Reverse) ARROW --- YOU PAY
Shape:	Round
Size:	31.92 mm–32.09 mm
Material:	Brass
Weight:	7.8 grams
Issued By:	Vesta Batteries, Gracefield, Lower Hutt City, Wellington.



Check - VESTA BATTERIES, WELLINGTON

New Zealand - Token Circa 1920's---1930's

Reg. No: TMR - V2

Summary:

New Zealand/Australia

Penny(AD)

Mint: not recorded.

Discipline: Numismatics

More information

Tagged with: Bar/Pub Spinner

Themes this item is part of: Numismatics & Philately Collection

Primary Classification: Tokens

Secondary Classification: New Zealand
Australia

Tertiary Classification: Checks

Denomination: No value

Inscriptions: (Edge) Plain
(Obverse) Always use VESTA BATTERIES and pay less
(Reverse) ARROW---YOU PAY

Shape: Round

Size: 32.05 mm—32.09 mm

Material: Copper

Weight: 8.2 grams

Issued By: Vesta Batteries, Gracefield,
Lower Hutt City, Wellington.



Check -VESTA BATTERIES, WELLINGTON New Zealand - Token Circa 1920's---1930's

Reg. No: TMR - V3

Summary:

New Zealand/Australia

Penny(AD)

Mint: not recorded.

Discipline: Numismatics

More information

Tagged with: Bar/Pub Flipper token –You WIN/You LOOSE

Themes this item is part of: Numismatics & Philately Collection

Primary Classification: Tokens

Secondary Classification: New Zealand
Australia

Tertiary Classification: Checks

Denomination: No value

Inscriptions: (Edge) Plain
(Obverse)With Vesta Batteries*YOU WIN* Pig Head
(Reverse) Without Vesta Batteries *YOU LOOSE* Rear End Pig

Shape: Round

Size: 26.08 mm

Material: Brass

Weight: 7.1 grams

Issued By: Vesta Batteries, Gracefield,
Lower Hutt City, Wellington.



Check -VESTA BATTERIES, WELLINGTON

New Zealand - Token Circa 1920's---1930's

Reg. No: TMR - V4

Summary:

New Zealand/Australia

Penny(AD)

Mint: not recorded.

Discipline: Numismatics

More information

Tagged with: Bar/Pub Flipper token –You WIN/You LOOSE

Themes this item is part of: Numismatics & Philately Collection

Primary Classification: Tokens

Secondary Classification: New Zealand
Australia

Tertiary Classification: Checks

Denomination: No value

Inscriptions: (Edge) Plain
(Obverse)With Vesta Batteries*YOU WIN* Pig Head
(Reverse) Without Vesta Batteries *YOU LOOSE* Rear End Pig

Shape: Round

Size: 26.05 mm--26.08 mm

Material: Copper

Weight: 7.0 grams

Issued By: Vesta Batteries, Gracefield,
Lower Hutt City, Wellington.



PAPERSPAST

[Papers Past Home](#)

[Introduction](#)

[Search](#)

[Browse](#)

[Papers Past](#) > [Evening Post](#) > [27 March 1920](#) > [Page 13](#) > [Page 13 Advertisements Column 5](#)

Page 13 Advertisements Column 5

Evening Post, Volume XCIX, Issue 74, 27 March 1920, Page 13

**MOTOR CARS,
MOTOR LORRIES,
GIVE GREATER SATISFACTION**

WHEN "VESTA" BATTERIES are installed. These Batteries have been carefully constructed, thoroughly tested, have long life and great capacity, and give quicker starting, surer ignition, better lighting.

**"VESTA" STORAGE BATTERIES
"VESTA" STORAGE BATTERIES**

Are suited to every make and model of
Car or Lorry.

The "VESTA" Lighting System is infinitely preferable to any other on the market.

It is most efficient and dependable.

**'VESTA' BATTERIES OVERHAULED
AND RECHARGED HERE.**

—

**A. & T. BURT, LTD.,
COURTENAY-PLACE,
Wellington.**



NOW made in
NEW ZEALAND
Quality Since 1897

PARTY POWER

Wednesday, August 28, 2013

PARTY POWER

The old Exide Batteries site at 149 Hutt Park Road was recently sold and Exide will vacate the historic premises on August 30, 2013. It is understood that the site will be redeveloped by the new owners.

As a final farewell to the Exide site that has housed the company for over 80 years, Exide held a reunion for all past.

Exide had manufactured, warehoused, and distributed automotive batteries from its Gracefield site that was strategically placed to service the local car manufacturing industry such as Ford in Seaview (now Placemakers), Chrysler/Todds/Mitsubishi in Porirua and Holden Trentham.

Andrew Duncan Director – Sales & Marketing, Marshall Power Australasia, whom himself held various roles in the past at the site says *"The leading technology and reliability of the product remains but the premises is sadly going. We want to celebrate the team that has made Exide Batteries a leading battery range in New Zealand, we want to find and invite them to a reunion as a thank you for all the wonderful work over the many, many years."*

The site at 149 Hutt Park Road was Head Office for Exide Batteries since approximately 1941. The earliest photo the company owns has the inscription: 'Presented to the Management of Exide Batteries of NZ Ltd by the first Exide Social committee on the 15th July 1941'



Whether this group was employees and partners or only employees is unclear. There seems to be 50/50 split of men and women, but during the war many more women were employed.

The company has operated under different names, depending on the owners over the decades, including Battery Makers of NZ Ltd, Chloride, GNB and Exide, and purchased other battery companies over the years such as Amalgamated Batteries, Vesta Batteries, Rokfire and others. Battery brands such as ABL Powerbreed, Exide and of course Marshall (Holler for a Marshall) are all part of the past and current stable.

The longest serving employee currently at Exide was employed in 1972, and he can recall that there were over 300 employees at that time with the factory then manufacturing over 400,000 car batteries per annum, many of which were exported to Australia.

In October 2000 Exide Technologies Inc based in USA purchased the company from Pacific Dunlop, and the name changed from GNB to Exide Technologies Ltd. At that time there were 185 employees in NZ, 38 at the Waione St site for battery recycling and 85 at the Hutt Park Rd site for battery manufacturing and Head Office.

In the year 2000, the factory was manufacturing 900 batteries per day for the NZ market. In September 2006 Exide ceased manufacturing at Hutt Park Rd site and the Exide factory in Adelaide, South Australia took over the manufacture of Exide batteries for NZ.

The management team of the Hutt Park Rd site in early 1984 are shown in the boardroom with the latest product offering with Messers Cooksley (Sales Manager), Turner (Accountant), Day (Production), Smith (CEO), Cosgrove (Company Secretary) and Toolan, (Manufacturing Manager).



In 1996 the company was then GNB, and had staff photos taken outside the Hutt Park Road and Waione St sites.

Over the years, this iconic site & company has employed thousands of Wellingtonians, contributed millions to the local economy and has been awarded with many business and quality awards. Now in 2013, one of the strongest privately owned global battery companies purchased the business now called Marshall Power.

The head office is now located at **Auckland (Mt Wellington)** with offices the breadth of the North and South Island including **Whangarei, Hamilton, Palmerston North, Wellington, Nelson and Christchurch** and Exide will continue to provide New Zealand with a great start for many years to come.



BATTERY COMPANY TO CEASE LOCAL MANUFACTURING

Marshall Power today advised employees of the company's intent to cease its local battery manufacturing in Edinburgh North, South Australia.

This announcement affects factory employees, with manufacturing at the plant planned to conclude by the end of 2014, when the site will operate as a Distribution Centre.

"This was a very difficult decision and not one made lightly. We are very proud of our manufacturing history and to lose some of our dedicated team members is always a last resort. We must ensure long-term viability and sustainability for the larger employee group." Said Andrew Duncan, Marshall Power Australasian Sales and Marketing Director.

The business owns a range of leading automotive battery brands including Exide and Marshall, which continues to be sold across Australia and New Zealand. Some of these products have been manufactured locally while others have been imported.

"We recognise the great work of our manufacturing staff in South Australia and they will be fully supported throughout the transition. All viable options have been explored and due to competing imports and to deliver increased value to all Australian and New Zealand motorists, we have no choice but to fully utilise our associated companies to manufacture offshore. Whilst we are deeply saddened about losing some of our team, this announcement delivers long term viability and allows us to continue to provide best in class product and a new range that will secure continued supply and value to our customers.

Our business will continue to supply Australian car manufacturers and our Australasian aftermarket customers. Today's announcement is not attributable to any one specific factor and is not related to any decisions made by Australian car manufacturers. This is a commercial decision taken by our business." said Mr Duncan.

Marshall Power is dedicated to delivering the best technology and continued value to its customers.

Since 1935, the business has been and will continue to provide market leading batteries for automotive manufacturers and aftermarkets across a range of uses including Car, Marine, Motorcycle, 4WD, caravanning, Agribusiness, Trucking and Home & Garden products.

Check - WAIKATO BEER, HAMILTON EAST

New Zealand - Token Circa 1870–1989

Reg. No: TMR - W1

Summary:

New Zealand
No value (AD)
Mint: Not known

Discipline: Numismatics

More information

Tagged with: Bar spinner

Themes this item is part of: Numismatics & Philately Collection

Primary Classification: Tokens

Secondary Classification: New Zealand

Tertiary Classification: Checks

Denomination: No value

Inscriptions: (Edge) Plain
(Obverse) WHEREVER YOU GO TAKE WAIKATO
NEW ZEALAND'S FAVOURITE BEER
(Reverse) (an arrow) YOU PAY

Shape: Round

Size: 35.39 mm x 35.44 mm

Material: Aluminium

Weight: 3.8 grams

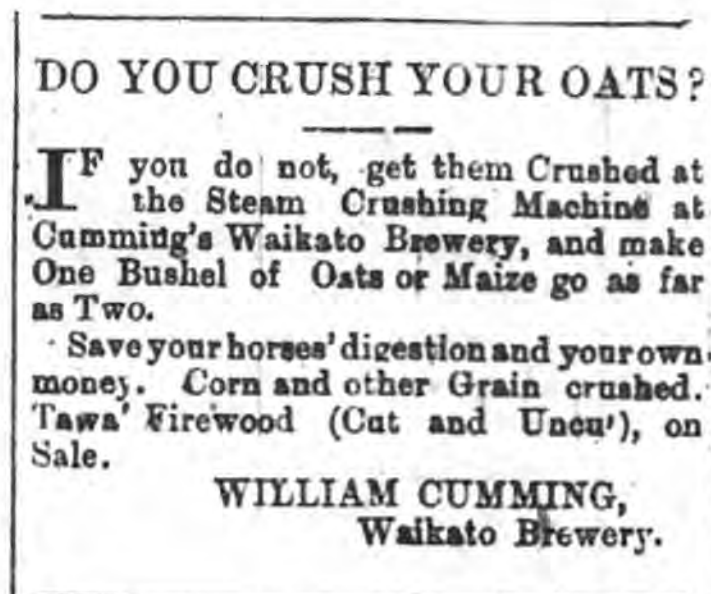
Issued By: WAIKATO BREWERY
HAMILTON EAST



Topic: A Short History of the Waikato Brewery in Hamilton

Waikato Brewery was established by William Cumming in 1873 at the river end of Cook Street in Hamilton East. It was adjacent to the Royal Hotel which Cumming had bought in 1870.

It's not known if Waikato Brewery was a legally registered name but Mr Cumming advertised using this name.



From Waikato Times 18 February 1879 p.1

Over the next decade William Cumming had problems with his finances and the management of the Royal Hotel. He ended up filing for bankruptcy in 1883. The brewery was acquired in September of 1884 by C.J.W. Barton & Co. Mrs Charlotte Wilson, mother of Charles John Wright [Barton](#), owned the land and the buildings while C.J.W. became the plant's occupier and operator. He did this for three years before moving on to manage the [Commercial Hotel](#) in Hamilton and a Mr S. Pascoe took over the brewery's operations. Mr Pascoe parted with the business in late 1889 and the plant was purchased by [Mary Jane Innes](#), whose family was to have a long association with the Waikato Brewery.



Mary and husband Charles had brewing experience having previously owned and run a brewery at Ngaruawahia and at the time of purchasing the Waikato Brewery, owning and operating the Te Awamutu Brewery since about 1877. They had already extended their operations into Hamilton with the opening of a beer bottling plant and the appointment of a wine and spirit merchant, Mr Richard Land, as an agent, so had been in competition with William Cumming's Waikato Brewery.

Financial pressures led to the Innes' closing their Te Awamutu brewery and on the 12th of December 1895 the property was sold. Just over two years later, in April of 1897, a fire broke out at the Hamilton East brewery. The aerated water section survived but the beer brewing part didn't.



From Hamilton West, parish of Te Rapa [map], 1864

A new site was needed. This was to be Lot 60, and the lease of part of Lot 61. The financial transactions and ownership details are complicated but we know that the brewery buildings were built closest to the north west corner of Lot 60, i.e. the corner of [Tisdall Street](#) and Richmond Street (now [Bridge Street](#)).

In July of 1899, Charles Innes senior, aged 75, died in a bathtub at the brewery. The cause was heart failure. On the 1st of November 1900 eldest son Charles Lewis Innes and his mother Mary Jane Innes formed a partnership as C.L. Innes & Co., Brewers and Aerated Water Manufacturers, Waikato Brewery, Hamilton.



Looking across the river from Hamilton East, the Waikato Brewery can be seen at centre left.

A couple of years later Charles Lewis bought the house at number 8 Tisdall Street and he and his mother and brothers moved in. In 1905 brother Frank T. Innes became a joint owner, with Charles, of the property. Frank was also a partner in the brewery. After Charles Lewis married in 1907 Mary Jane moved out of the house and up to Auckland. Charles and Frank continued to run the business. Charles focussed on the alcohol side and Frank on the soft drinks and cordial. At this time the brewery produced its own Peerless Ales and bottled Ward's Ale from Christchurch. In 1912 Mary Jane Innes gifted her shares in the company to sons Charles Lewis and Frank.



Horse drawn carts like this one were replaced by motorised vehicles from about 1915

Tragedy struck on the 15th of November 1918 when Charles Lewis Innes succumbed to influenza aged 45 years. It fell to Frank carry on operations and he did so successfully.

In 1930 a new building to front the C.L. Innes & Co brewery and bottling operations was built. The building, on the corner of [Tisdall Terrace](#) and Bridge Street, is still there today (2012). It is not known why the date of 1887 was placed on the building's facade as nothing significant happened that year.



Waikato Breweries Ltd c.1950

With the Innes' at the helm and a loyal hard working workforce, the brewery survived the depression of the 1930s, the Second World War and increasing competition.

In the late 1940s new methods and new expertise were introduced which contributed to a rise in popularity for Waikato brews. In 1948 the company was restructured. Innes Industries Ltd was formed, of which Waikato Breweries Ltd became a subsidiary unit separate from the soft drink side of things. In 1951 Waikato Breweries and L.D. Nathan merged their brewery interests and formed Consolidated Hotels Ltd. This was a boon for Waikato Breweries as they gained access to a number of hotels.

In 1960 Frank T. Innes and family dedicated the area west of Hamilton Lake, known today as Innes Common, in memory of Charles Innes senior.



One year later Frank T. Innes died. Shortly after, Frank's son Jack L. Innes resigned from the board of Waikato Breweries Ltd. In 1962 New Zealand Breweries Ltd bought Innes Industries Ltd's shares in Waikato Breweries and Consolidated Hotels and the end of the Innes connection was nigh. Just over 100 years after William Cumming established the Waikato Brewery in Hamilton East, Harold H. Innes turned 65 and retired from his director role.

The Waikato Brewery plant officially closed in 1989.

C.J.W. Barton & colleagues



Check - 20 Shillings, Wairarapa Farmers Co-operative Association - New Zealand - Token Circa 1930'S

Reg. No: TMR - W2

Summary:

New Zealand
Shilling (AD)
Mint: not recorded.

Discipline: Numismatics

More information

Tagged with: Produce tokens

Themes this item is part of: Numismatics & Philately Collection

Primary Classification: Tokens

Secondary Classification: New Zealand

Tertiary Classification: Checks

Denomination: 20 Shillings

Inscriptions: (edge) Plain
(Obverse)Wairarapa FarmersCo-operative Association(20/- Limited)
(Reverse)Wairarapa FarmersCo-operative Association (20/- Limited)

Shape: Round

Size: 31 mm dia

Material: Cupro-nickel

Weight: 10 grams

Issued By: Wairarapa Farmers
Co-operative Association



Check - 10 Shillings, Wairarapa Farmers Co-operative Association - New Zealand - Token Circa 1930'S

Reg. No: TMR - W3

Summary:

New Zealand
Shilling (AD)
Mint: not recorded.

Discipline: Numismatics

More information

Tagged with: Produce tokens

Themes this item is part of: Numismatics & Philately Collection

Primary Classification: Tokens

Secondary Classification: New Zealand

Tertiary Classification: Checks

Denomination: 10 Shillings

Inscriptions: (edge) Plain
(Obverse)Wairarapa FarmersCo-operative Association(10/- Limited)
(Reverse)Wairarapa FarmersCo-operative Association (10/- Limited)

Shape: Round

Size: 23.5 mm dia

Material: Cupro-nickel

Weight: 4.4 grams

Issued By: Wairarapa Farmers
Co-operative Association



Check - 5 Shillings, Wairarapa Farmers Co-operative Association - New Zealand - Token Circa 1930'S

Reg. No: TMR - W4

Summary:

New Zealand
Shilling (AD)
Mint: not recorded.

Discipline: Numismatics

More information

Tagged with:	Produce tokens	
Themes this item is part of:	Numismatics & Philately Collection	
Primary Classification:	Tokens	
Secondary Classification:	New Zealand	
Tertiary Classification:	Checks	
Denomination:	5 Shillings	
Inscriptions:	(edge) Plain (Obverse)Wairarapa Farmers Co-operative Association (5/- Limited) (Reverse)Wairarapa Farmers Co-operative Association (5/- Limited)	
Shape:	Round	
Size:	32 mm dia	
Material:	Brass	
Weight:	11.6 grams	
Issued By:	Wairarapa Farmers Co-operative Association	

Check - 2/6 Shillings, Wairarapa Farmers Co-operative Association - New Zealand - Token Circa 1930'S

Reg. No: TMR - W5

Summary:

New Zealand
Shilling (AD)
Mint: not recorded.

Discipline: Numismatics

More information

Tagged with: Produce tokens

Themes this item is part of: Numismatics & Philately Collection

Primary Classification: Tokens

Secondary Classification: New Zealand

Tertiary Classification: Checks

Denomination: 2 /6 Shillings

Inscriptions: (edge) Plain
(Obverse)Wairarapa Farmers Co-operative Association (2/6 Limited)
(Reverse)Wairarapa Farmers Co-operative Association (2/6 Limited)

Shape: Round

Size: 31 mm dia

Material: Brass

Weight: 9.4 grams

Issued By: Wairarapa Farmers
Co-operative Association



Check - 2 Shillings, Wairarapa Farmers Co-operative Association - New Zealand - Token Circa 1930'S

Reg. No: TMR - W6

Summary:

New Zealand
Shilling (AD)
Mint: not recorded.

Discipline: Numismatics

More information

Tagged with: Produce tokens

Themes this item is part of: Numismatics & Philately Collection

Primary Classification: Tokens

Secondary Classification: New Zealand

Tertiary Classification: Checks

Denomination: 2 Shillings

Inscriptions: (edge) Plain
(Obverse)Wairarapa Farmers Co-operative Association (2/- Limited)
(Reverse)Wairarapa Farmers Co-operative Association (2/- Limited)

Shape: Round

Size: 30 mm dia

Material: Brass

Weight: 8 grams

Issued By: Wairarapa Farmers
Co-operative Association



Check - 1 Shilling, Wairarapa Farmers Co-operative Association - New Zealand - Token Circa 1930'S

Reg. No: TMR - W7

Summary:

New Zealand
Shilling (AD)
Mint: not recorded.

Discipline: Numismatics

More information

Tagged with: Produce tokens

Themes this item is part of: Numismatics & Philately Collection

Primary Classification: Tokens

Secondary Classification: New Zealand

Tertiary Classification: Checks

Denomination: 1 Shilling

Inscriptions: (edge) Plain
(Obverse) Wairarapa Farmers Co-operative Association(1/- Limited)
(Reverse) Wairarapa farmers Co-operative Association (1/- Limited)

Shape: Round

Size 28 mm dia

Material: Brass

Weight: 6.4 grams

Issued By: Wairarapa Farmers
Co-operative Association



Check - Wairarapa Farmers Co-operative Association - New Zealand - Token Circa 1930'S

THE WAIRARAPA FARMERS' COOPERATIVE ASSOCIATION

Evening Post, Volume XCVIII, Issue 71, 22 September 1919,

THE WAIRARAPA FARMERS' CO- OPERATIVE ASSOCIATION

The directors of the Wairarapa Farmers' Co-operative Association report that since last balance the paid-up capital of the association has been increased by £59,853 5s. The net profit for the year—after making ample provision for bad and doubtful debts, depreciation of stock and plant, auditors' fees, and writing-off buildings—is £32,090 7s 6d, to which has to be added £6320 1s 8d carried forward from last year's profit and loss account, making a total of £38,410 9s 2d available for division. The directors recommend the distribution as follows: (1.) Payment of dividend on paid-up capital (free of income tax), 8 per cent.; (2.) Payment of bonus to shareholders on their purchases (commission goods exempted), 3 per cent.; (3.) Payment of bonus to managers and heads of such departments as have contributed a proportionate share of profit; (4.) Payment of bonus to employees, who are working under the Shops and Offices Act, and who have been a full year in the employ of the association, on their year's salary, 5 per cent.; (5.) A rebate of 15 per cent. on stock commissions, which for the convenience of those concerned will be included in the dividend warrants. All bonuses to staff to be at the discretion of the directors.

After paying dividend of 6 per cent. on preference shares, and Government income tax of about £14,000, honorarium to directors, and bonuses, the balance is to be carried forward to next year's Profit and Loss Account. The shareholders in the association now number 3095, being an increase of 614 for the year.

The directors report holding large and well-bought stocks, and all properties in a good state of repair.

The retiring directors are Messrs. J. Caselberg, V. E. Donald, and H. G. Williams, who, being eligible, offer themselves for re-election.

The company proposes to increase its capital to £400,000 by the issue of 50,000 preference shares of £1 each, paying 6 per cent. free of income tax.

**Check - Wairarapa Farmers Co-operative
Association - New Zealand - Token Circa 1930'S**



Check -WAIRARAPA, Masonic Chapter No 10 New Zealand - Token Circa --August 25th 2017

Reg. No: TMR - W8

Summary:
New Zealand
Penny(AD)
Mint: not recorded.

Discipline: Numismatics

More information

Tagged with: Masonic tokens/coins

Themes this item is part of: Numismatics & Philately Collection

Primary Classification: Tokens

Secondary Classification: New Zealand

Tertiary Classification: Checks

Denomination: No value

Inscriptions: (Edge) Plain
(Obverse) Wairarapa Chapter / (tools) / No 10
(Reverse) Advanced / (picture)

Shape: Round

Size: 26.29 mm

Material: Bronze

Weight: 8.0 grams

Issued By: Masonic Chapter No 10
Wairarapa



New Zealand - Masonic Coin - Wairarapa Chapter No 10



Wairarapa Chapter No 10 celebrated its 125th Anniversary in fine style at the Masterton Masonic Centre and later at the Solway Park hotel on July 22.

The First Grand Principal, ME Comp Brian White, was in attendance, along with Second Grand Principal RE Comp Ken McQueen, who is a member and PZ (four times!) of the Chapter; RE Comp Ken Burt, Grand Superintendent of the Wellington District, and a large number of members and visiting Companions.

The Chapter opened, received senior officers, and closed in order that ladies and others could be present for the event, and the proceedings began with a welcome from First Principal Tony Russell (who is serving his third term in the role).

Highlights of the meeting were a presentation on Royal Arch Freemasonry by the Central Division Grand Lecturer, RE Comp Geoffrey Coker, and the history of the Chapter, given by E Comp Don Staples. It is of note that this Chapter has always been the only one in the Wairarapa.

The Chapter also made a very generous and welcome donation of \$500 to the Jubilee Memorial Scholarship Fund, and took much pleasure in the announcement by Ken Burt that Chapter stalwart Malcolm Oldcorn was to be awarded Special Grand Rank in the 2018 appointments and promotions in Grand Chapter officers. Malcolm has been the Chapter's Director of Ceremonies for a mere 26 years!

The group then adjourned to the Copthorne Hotel and Resort Solway Park and enjoyed a very convivial evening featuring a superb three-course dinner.

Proposing the toast to the Chapter, Ken McQueen focused on the men who have supported and enjoyed Royal Arch Freemasonry in the Wairarapa in and through the Chapter over the years.

"This Chapter has had many eminent men, dedicated and hard-working, pass through its portals," he said.

"We have amongst us some who have served the Chapter for 40 years and more, and along with them we remember the characters whom we have shared our time with in the Chapter. Long may they stay in our hearts and memories.

"We look forward to the next 125 years, and I cannot doubt that our future conduct, and that of our successors, will be calculated still to increase the lustre of our justly esteemed Chapter."

A beautiful 125th birthday cake was cut by a top-table team of Brian White and Tony Russell.

The Chapter's well-deserved reputation for "characters" is clearly thriving, judging by the number of such Companions and others present who made the most of a well-organised, excellent event.

Wairarapa Chapter celebrates 125 Years



Check -WAIRONGOA, LUNCH ROOMS

New Zealand - Token Circa 1920'S

Reg. No: TMR - W9

Summary:

New Zealand

Penny (AD)

Mint: Not known

Discipline: Numismatics

More information

Tagged with: Produce tokens

Themes this item is part of: Numismatics & Philately Collection

Primary Classification: Tokens

Secondary Classification: New Zealand

Tertiary Classification: Checks

Denomination: ??

Inscriptions: (Edge) Plain
(Obverse)
(Reverse)

Shape: Round

Size: 24.5 mm

Material: Bronze

Weight: ?? grams

Issued By: WAIRONGOA, LUNCH ROOMS

"WAI-RONGOA!"

"WHAT IS IT?"

"WAI-RONGOA" Natural Mineral Water ("the Medicine Water"), is Nature's wise provision for man's infirmities. Flowing from its source deep under the great Maungatoka Mountain, it emerges sparkling and bubbling from its bed of white conglomerate, (a pure crystalline formation) at the Wai-Rongoa Medicinal Springs, North Taieri, Otago. The large volume of natural gas it contains indicates that the water comes under great pressure, and no matter what the season is, dry or wet, the quantity of water flowing never varies—it is believed to be inexhaustible.

The whole of the watershed has been purchased in order to prevent the possibility of contamination of the wells, and it has been converted into a beautiful park under the constant care of a landscape gardener.

A large factory has been erected containing the latest and best machinery (solid silver-lined) for bottling the waters and charging with the valuable natural gas collected from the springs. Thus "Wai-Rongoa" comes to the public in all its natural purity. It has been aptly termed

"THE BRINGER OF HEALTH."

The taste of "Wai-Rongoa" is clear and pleasant, with just a sufficient indication of chalybeates to remind one of their healing qualities, and the sparkle and "life" of the water render it instantly refreshing and comforting.

As an Antacid "Wai-Rongoa" is of great benefit in cases of Dyspepsia and Gout or Rheumatic manifestation, while the iron it contains makes it invaluable to those suffering from anaemia or debility.

It is, in fact, Nature's Antidote for human ailments, and if taken regularly will not fail to benefit the most complicated cases.

It assimilates perfectly with wines, spirits, ales, milk, &c.

"Wai-Rongoa" has gained gold medals wherever exhibited, including Dublin, Liverpool, St. Louis, Queensland, N.Z. International, &c.

THOMSON & CO., DUNEDIN.

WHOLESALE AGENTS—

T. & W. YOUNG, Wellington; BARRAUD & ABRAHAM, Palmerston N.

Check - WAITEMATA HOTEL, AUCKLAND New Zealand - Token Circa 1920'S

Reg. No: TMR - W10

Summary:

New Zealand
No value (AD)
Mint: Not known

Discipline: Numismatics

More information

Tagged with: Check tokens

Themes this item is part of: Numismatics & Philately Collection

Primary Classification: Tokens

Secondary Classification: New Zealand

Tertiary Classification: Checks

Denomination: No value

Inscriptions: (Edge) Plain
(Obverse)
(Reverse)

Shape: Round

Size: 25 mm

Material: Brass

Weight: ?? grams

Issued By: WAITEMATA HOTEL,
AUCKLAND



1907–1913 Corner Queen & Custom Streets. Thames Hotel (left) Waitemata Hotel (right)

JACK ENDEAN,; Waitemata Hotel, Auckland.
NZ Truth , Issue 302, 8 April 1911, Page 5

—About this newspaper—

—View computer-generated text—



JACK ENDEAN,
Waitemata Hotel, Auckland.



1951 Waitemata Hotel.



1960 Corner of Queen & Derby Streets

Check - 1/- Wanganui Cosmopolitan Club 1905 New Zealand - Token

Reg. No: TMR - W11

Summary:

New Zealand
Shilling (AD)
Mint: not recorded.

Discipline: Numismatics

More information

Tagged with: Club tokens

Themes this item is part of: Numismatics & Philately Collection

Primary Classification: Tokens

Secondary Classification: New Zealand

Tertiary Classification: Checks

Denomination: 1 Shilling

Inscriptions: (Type 1) Die 1 'C' Level
(Obverse) Cosmopolitan Club (1/-)
(Reverse) 1905 Wanganui (Maori head)

Shape: Round

Size: 24.5 mm dia

Material: Cupro-nickel

Weight: 4.2 grams

Issued By: Wanganui Cosmopolitan Club



Check - 1/- Wanganui Cosmopolitan Club 1905 New Zealand - Token

Reg. No: TMR - W12

Summary:

New Zealand
Shilling (AD)
Mint: not recorded.

Discipline: Numismatics

More information

Tagged with: Club tokens

Themes this item is part of: Numismatics & Philately Collection

Primary Classification: Tokens

Secondary Classification: New Zealand

Tertiary Classification: Checks

Denomination: 1 Shilling

Inscriptions: (Type 2) Die 11 'C' Higher
(Obverse) Cosmopolitan Club (1/-)
(Reverse) 1905 Wanganui (Maori head)

Shape: Round

Size: 24.49 mm–24.34 mm dia

Material: Cupro-nickel

Weight: 4.4 grams

Issued By: Wanganui
Cosmopolitan Club



Check - 6d Wanganui Cosmopolitan Club 1905 New Zealand - Token

Reg. No: TMR - W13

Summary:

New Zealand
Penny (AD)
Mint: not recorded.

Discipline: Numismatics

More information

Tagged with: Club tokens

Themes this item is part of: Numismatics & Philately Collection

Primary Classification: Tokens

Secondary Classification: New Zealand

Tertiary Classification: Checks

Denomination: 6 pence

Inscriptions: (edge) Plain
(Obverse) Cosmopolitan Club (6d)
(Reverse) 1905 Wanganui (Maori head)

Shape: Round

Size: 32 mm dia

Material: Light bronze

Weight: 4.2 grams

Issued By: Wanganui
Cosmopolitan Club



Check - 4d Wanganui Cosmopolitan Club 1905 New Zealand - Token

Reg. No: TMR - W14

Summary:

New Zealand
Penny (AD)
Mint: not recorded.

Discipline: Numismatics

More information

Tagged with: Club tokens

Themes this item is part of: Numismatics & Philately Collection

Primary Classification: Tokens

Secondary Classification: New Zealand

Tertiary Classification: Checks

Denomination: 4 pence

Inscriptions: (edge) Plain
(Obverse) Cosmopolitan Club (4d)
(Reverse) 1905 Wanganui (Maori head)

Shape: Round

Size: 24.5 mm dia

Material: Dark bronze

Weight: 4.2 grams

Issued By: Wanganui
Cosmopolitan Club



Check - 3d Wanganui Cosmopolitan Club 1905 New Zealand - Token

Reg. No: TMR - W15

Summary:

New Zealand

Penny (AD)

Mint: not recorded.

Discipline: Numismatics

More information

Tagged with: Club tokens

Themes this item is part of: Numismatics & Philately Collection

Primary Classification: Tokens

Secondary Classification: New Zealand

Tertiary Classification: Checks

Denomination: 3 pence

Inscriptions: (edge) Plain
(Obverse) Cosmopolitan Club (3d)
(Reverse) 1905 Wanganui (Maori head)

Shape: Round

Size: 24.5 mm dia

Material: Brass

Weight: 4.2 grams

Issued By: Wanganui
Cosmopolitan Club



PAPERSPAST

[Papers Past Home](#) [Introduction](#) [Search](#) [Browse](#)

[Papers Past](#) > [Wanganui Chronicle](#) > [1 July 1907](#) > [Page 5](#) > [COSMOPOLITAN CLUB](#)

COSMOPOLITAN CLUB

Wanganui Chronicle, Volume L, Issue 12119, 1 July 1907, Page 5



Historic Cosmopolitan Club (1900), Wanganui, North Wall

COSMOPOLITAN CLUB

There was a large attendance of members and visitors at the Cosmopolitan Club, on Saturday evening last, the occasion being the opening of the new visitors' and club room, on the lower floor of the building, by Mr. J. H. Hogan, M.H.R., who was present by invitation of the committee.

The President (Mr. G. M. Gardener) occupied the chair. In the course of an excellent speech, he expressed the pleasure the committee and members all felt at the consummation of a long-felt want. He referred with pride to his committee, who were determined to maintain the dignity of the institution and advance its best interests. Despite certain pessimistic criticism since the change of administration, the club had prospered exceedingly. The last month showed a record increase in all departments. The most pleasing feature, however, was the enrolment of nearly 100 new library subscribers, mostly ladies.

During last month considerably over 100 new volumes had been added, and the committee had now decided to supplement the already large library allowance by a further £25 per annum. It was his intention to propound a scheme at the next annual meeting whereby four or six scholarships for boys and girls would be offered annually, enabling children of members, by merit, to receive at least one year's education at any college at the club's expense; also to establish a mortuary fund, to enable the nearest of kin of any member to receive a sum at death. It was only right that members should have some participation in profits. Mr. Gardener next referred to the stringent rules regarding excesses, gambling, or betting on the club's premises, stating that it was most gratifying that no member had been censured for infringement. He then called upon Mr. Hogan to perform the pleasant task allotted to him.

Mr. Hogan (who was received with applause), in the course of an eloquent address, said he had received the President's invitation with extreme pleasure, more especially because he recognised the Cosmopolitan Club was making strenuous efforts to remove the stigma usually attached to clubs—that they were drinking shops. The splendid room they sat in, and the facilities and advantages offered to members, were in the highest degree creditable.

Papers Past — Wanganui Chronicle — 1 July 1907 — COSMOPOLITAN CLUB

The upstairs, or any portion of the building, could be visited without seeing or going near the bar, and members were not expected or induced to drink against their wish. The club had higher ideals. The magnificent library, the reading room, and the low rate of subscription were features in themselves. The management and the conduct of members were all that could be desired. He was delighted to hear of the club's prosperity, and earnestly hoped the President's excellent suggestion would be adopted. The task he was asked to perform that evening was indeed a happy one. He heartily congratulated the members upon their new acquisition, which would tend to promote sociability and comfort. The foresight of the committee was highly commendable. Mr. Hogan then asked all present to join with him in wishing continued prosperity to the Cosmopolitan Club. The toast was accompanied with musical honours, and the room declared open.

The President next proposed "Health and prosperity to our representative." The toast was received with much enthusiasm and musical honours.

In addition to the new visitors' and club room, new writing, telephone, and bath rooms have been recently added to this fine building.

Check -WARDELLS BLDGS CH-CH New Zealand - Token Circa 1920's

Reg. No: TMR - W16

Summary:

New Zealand

5 shillings value, Reward (AD)

Mint: Not known

Discipline: Numismatics

More information

Tagged with: Check/Reward tokens

Themes this item is part of: Numismatics & Philately Collection

Primary Classification: Tokens

Secondary Classification: New Zealand

Tertiary Classification: Checks

Denomination: Value 5/-

Inscriptions: (Edge) Plain
(Obverse) THE NEW ZEALAND BICYCLE & KEY
REGISTRY ASSⁿ No— CHRISTCHURCH
(Reverse) PLEASE RETURN TO WARDELLS BLDGS
CH.CH 5/- REWARD

Shape: Round

Size: 23.85 mm—23.91 mm

Material: Copper

Weight: 4.6 grams

Issued By: WARDELLS BUILDING
CASHEL STREET, CH-CH





Description

Looking west down Cashel Street, Christchurch (centre) with High Street running from left to right in the foreground, showing the Wardell's Building (to the left of the DIC sign) and further along, the Waterloo Hotel, and the premises of the Hallenstein brothers on the right

Check - N.Z. WEET-BIX Tokens**New Zealand - Token Circa-- 2015-16**

Reg. No: TMR - W17

Summary:

New Zealand
 No value (AD)
 Mint: not recorded.

Discipline: Numismatics**More information****Tagged with:** Trade tokens**Themes this item is part of:** Numismatics & Philately Collection**Primary Classification:** Tokens**Secondary Classification:** New Zealand**Tertiary Classification:** Checks**Denomination:** No value (2 tokens)

Inscriptions: (Edge) Plain
 (Obverse) Sanitarium Finger Puppet ONE token Weet-Bix
 (Reverse) Blank

Shape: Rectangle**Size:** 49.50 mm x 29.00 mm approx**Material:** Paper card**Weight:** ?? grams**Issued By:** SANITARIUM

Check - N.Z. WEET-BIX Tokens

New Zealand - Token Circa-- 2015-16

Reg. No: TMR - W18

Summary:

New Zealand
 No value (AD)
 Mint: not recorded.

Discipline: Numismatics

More information

Tagged with: Trade tokens

Themes this item is part of: Numismatics & Philately Collection

Primary Classification: Tokens

Secondary Classification: New Zealand

Tertiary Classification: Checks

Denomination: No value (2 tokens)

Inscriptions: (Edge) Plain
 (Obverse) Sanitarium Proof of purchase ONE Worldball token Weet-Bix
 (Reverse) Blank

Shape: Rectangle

Size: 66.50 mm x 39.50 mm approx

Material: Paper card

Weight: ?? grams

Issued By: SANITARIUM



Check - N.Z. WEET-BIX Tokens**New Zealand - Token Circa-- 2015-16**

Reg. No: TMR - W19

Summary:

New Zealand
 No value (AD)
 Mint: not recorded.

Discipline: Numismatics

More information

Tagged with: Trade tokens

Themes this item is part of: Numismatics & Philately Collection

Primary Classification: Tokens

Secondary Classification: New Zealand

Tertiary Classification: Checks

Denomination: No value (2 tokens)

Inscriptions: (Edge) Plain
 (Obverse) Sanitarium Proof of purchase ONE Token Weet-Bix
 (Reverse) Blank

Shape: Rectangle

Size: 66.50 mm x 39.50 mm approx

Material: Paper card

Weight: ?? grams

Issued By: SANITARIUM



Check - N.Z. WEET-BIX Tokens

New Zealand - Token Circa-- 2015-16

Reg. No: TMR - W20

Summary:

New Zealand
No value (AD)
Mint: not recorded.

Discipline: Numismatics

More information

Tagged with: Trade tokens

Themes this item is part of: Numismatics & Philately Collection

Primary Classification: Tokens

Secondary Classification: New Zealand

Tertiary Classification: Checks

Denomination: No value (2 tokens)

Inscriptions: (Edge) Plain
(Obverse) Weet-Bix (3 stars) ONE Tryathlete Weet-Bix Token
(Reverse) Blank

Shape: Rectangle

Size: 68.50 mm x 42.10 mm approx

Material: Paper card

Weight: ?? grams

Issued By: SANITARIUM



Sanitarium Weet-Bix Kiwi Kids TRYathlon

Every young Kiwi grows up with the dream of holding their hands up in triumph and being presented with a winner's medal. The Weet-Bix Kiwi Kids TRYathlon has made that dream a reality for many, by awarding over 200,000 medals to Kiwi kids since 1992.

Today it has become the largest under 16 triathlon series in the world, something we can all be really proud of!

With a focus on giving it a go and trying your best, the Weet-Bix Kiwi Kids TRYathlon celebrates kids' achievements and helps share Sanitarium's passion for promoting active, healthy lifestyles.

Available to kids aged 7-15, everyone is encouraged to give it a try!

The 2015/16 series is the 24th year the Weet-Bix Kiwi Kids TRYathlon has taken place in locations all around New Zealand. The TRYathlon is made possible thanks to our volunteers, both community members and Sanitarium staff.

Check out our [Facebook page](#) and website try.weetbix.co.nz to get involved now!



In The Community

Our mission is to share with our communities a message of health and hope. We value those within our communities by offering our time, talents, and resources to support and serve others.

Making a long-term positive difference is important to us – which is why we're proud of our partnerships with trusted organisations who, like us, want what's best for our communities.



Check - WELLINGTON CITY CORPORATION

New Zealand - Token Circa 1926--1930'S

Reg. No: TMR - W21

Summary:

New Zealand

Pint (AD)

Mint: Precision Engineering Co Ltd , Rongotai, Wellington

Discipline: Numismatics

More information

Tagged with: Produce/milk tokens

Themes this item is part of: Numismatics & Philately Collection

Primary Classification: Tokens

Secondary Classification: New Zealand

Tertiary Classification: Checks

Denomination: One pint

Inscriptions: (edge) Plain (slotted cut)
(Obverse) WELLINGTON CITY CORPORATION, AND CREST
(Reverse) ONE PINT

Shape: Round, (unholed)

Size: 17.68 mm

Material: Cupro-Nickel

Weight: 2.20 grams

Issued By: WELLINGTON CITY CORPORATION



Check - WELLINGTON CITY CORPORATION New Zealand - Token Circa 1926--1930'S

Reg. No: TMR - W22

Summary:

New Zealand

Pint (AD)

Mint: Precision Engineering Co Ltd , Rongotai, Wellington

Discipline: Numismatics

More information

Tagged with: Produce/milk tokens

Themes this item is part of: Numismatics & Philately Collection

Primary Classification: Tokens

Secondary Classification: New Zealand

Tertiary Classification: Checks

Denomination: One pint

Inscriptions: (edge) Plain
(Obverse) WELLINGTON CITY CORPORATION, AND CREST
(Reverse) ONE PINT

Shape: Round, (holed)

Size: 17.68 mm

Material: Cupro-Nickel

Weight: 2.20 grams

Issued By: WELLINGTON CITY CORPORATION



Check - WELLINGTON CITY CORPORATION New Zealand - Token Circa 1926--1930'S

Reg. No: TMR - W23

Summary:

New Zealand

Quart (AD)

Mint: Precision Engineering Co Ltd , Rongotai, Wellington

Discipline: Numismatics

More information

Tagged with: Produce/milk tokens

Themes this item is part of: Numismatics & Philately Collection

Primary Classification: Tokens

Secondary Classification: New Zealand

Tertiary Classification: Checks

Denomination: One quart

Inscriptions: (edge) Plain (slotted cut)
(Obverse) WELLINGTON CITY CORPORATION, AND CREST
(Reverse) ONE QUART

Shape: Round, (No Hole)

Size: 23.74 mm

Material: Cupro-Nickel

Weight: 5.0 grams

Issued By: WELLINGTON CITY CORPORATION



Check - WELLINGTON CITY CORPORATION**New Zealand - Token Circa 1926--1930'S**

Reg. No: TMR - W24

Summary:

New Zealand

Quart (AD)

Mint: Precision Engineering Co Ltd , Rongotai, Wellington

Discipline: Numismatics**More information**

Tagged with: Produce/milk tokens

Themes this item is part of: Numismatics & Philately Collection

Primary Classification: Tokens

Secondary Classification: New Zealand

Tertiary Classification: Checks

Denomination: One quart

Inscriptions: (edge) Plain
(Obverse) WELLINGTON CITY CORPORATION, AND CREST
(Reverse) ONE QUART

Shape: Round, (With Hole)

Size: 23.50 mm

Material: Cupro-Nickel

Weight: 5.0 grams

Issued By: WELLINGTON CITY CORPORATION



Check - WELLINGTON CITY CORPORATION New Zealand - Token Circa 1930'S

Reg. No: TMR - W21 to W24 Notes



Origin/meaning :

The City of Wellington adopted a coat of arms in 1878, but it was never officially registered. An official grant from the College of Arms in London was received on 6th June 1961.

The shield combines the arms of Wellesley Duke of Wellington with those of New Zealand. The gold cross and five silver discs come the Duke's arms, after whom the city was named. As Wellington is the capital of new Zealand it is appropriate that it should incorporate parts of the national arms - the fleece, lymphad and sheaf. The crest shows that Wellington is a maritime city as it consists of a dolphin and mural crown.

The supporters are a British lion and a native (extinct) moa.

The motto - SUPREMA A SITU - means "Supreme by Position".

Check - WELLINGTON CITY CORPORATION New Zealand - Token Circa 1930'S

Reg. No: TMR - W21 to W24 Notes

Title:	Loan: Wellington City Milk Loan 1938, of £15,000 for the purposes of: (a) Additions to Rahui Factory (b) Holding tank and coal elevator Rahui Factory (c) Additional plant - Rahui Factory (d) Erection of cottages - Rahui (e) Additional plant for Wellington Milk Station
Reference No:	00001:1047:27/201
Date:	1938
Format:	File
Series No:	00001
Series Title:	Town Clerk's files
Creating Agency:	Wellington City Council, Town Clerk's Department
Date Range:	1926-1998



Check - WELLINGTON CHAMBER OF COMMERCE

New Zealand - Token Circa 1960's

Reg. No: TMR - W25

Summary:

New Zealand
Value:-No value
Mint: Parklin

Discipline: Numismatics

More information

Tagged with: Key- tag / Token

Themes this item is part of: Numismatics & Philately Collection

Primary Classification: Tokens

Secondary Classification: New Zealand

Tertiary Classification: Checks

Denomination: No value

Inscriptions: (Edge) Plain
(Obverse) REWARD ON RETURN TO WELLINGTON
CHAMBER OF COMMERCE
(Reverse) 758

Shape: Oval

Size: 32.64 mm–18.98 mm

Material: Brass

Weight: 5.2 grams

Issued By: CHAMBER OF COMMERCE
WELLINGTON N.Z.



WELLINGTON CHAMBER OF COMMERCE.

MARLBOROUGH EXPRESS, VOLUME XXXI, ISSUE 36, 14
FEBRUARY 1895

THE RECIPROCITY AGREEMENT.

[UNITED PRESS ASSOCIATION.]

WELLINGTON, February 13.

The annual report of the Council of the Wellington Chamber of Commerce refers with satisfaction to the progress of the work on the central route of the North Island Main Trunk Railway, and applauds the steps taken by the Government to acquire the Wellington-Manawatu Railway. As to tariff revision the report says the composition of the Royal Commission now sitting gives the impression that the mercantile community has more to fear than hope from the results of its deliberations. The long-continued suspense and uncertainty affecting this question cannot but be prejudicial to trade, and it is no doubt one of the minor influences contributing to the want of confidence which prevails in the colony. The reciprocity agreement recently entered into between New Zealand and South Australia is not one which seems to meet with the approval of the Chamber and the mercantile community. The stipulation by which New Zealand is precluded from making similar compacts with the far more important colonies of New South Wales, as a condition of the free admission of four of our products into South Australia, is most objectionable.

WELLINGTON CHAMBER OF COMMERCE.

A SPECIAL General Meeting of the Members of the Chamber of Commerce was held on Tuesday, the 23rd ultimo. There was a large attendance of members, and several highly important matters were considered. The following memorial, prepared by the committee, was unanimously adopted:—

Marlborough
Express

3 December 1858

To the Right Honorable Sir EDWARD BULWER
LYTTON, M.P., Bart., Her Majesty's Principal
Secretary of State for the Colonies;

The respectful Memorial of the Chamber of Com-
merce, Wellington, New Zealand, Sheweth,

That in the year 1856 the General Assembly of
New Zealand passed an Act under which Customs'
duties were to be levied on a large number of articles ac-
cording to their gross weight, or the measurement of
the packages in which such articles were contained.

That no opportunity was afforded to your memo-
rialists or others, to address the House on the subject,
as the measure was introduced at the close of the Ses-
sion, and passed through all its stages in one sitting of
the Assembly.

That your memorialists immediately addressed his
Excellency the Governor (and subsequently petitioned
the Legislature) praying that the Tariff might be al-
tered, because the principle of charging the same du-
ties on commodities of greatly dissimilar value,
merely by their bulk, would inevitably cause the arti-
cles of smallest price to pay the largest amount of
duty, while as nothing was prescribed as to the mode
by which measurements should be taken, difficult
questions would continually arise in the measurement
of casks and irregularly shaped packages.

That in consequence of the representations of your
memorialists, certain instructions were issued to the
Collector of Customs in New Zealand (in virtue of
powers given by the Act) under which the said Act
has been kept in operation with less practical inconve-
nience than was at first anticipated, and your memo-
rialists were therefore content to wait, until a well-
digested tariff should be prepared.

Check - WELLINGTON TRAMWAYS

New Zealand - Token Circa 1878 –1900's

Reg. No: TMR - W26

Summary:

New Zealand

Value (AD)

Mint:

Discipline: Numismatics

More information

Tagged with: Driver/Conductor tokens

Themes this item is part of: Numismatics & Philately Collection

Primary Classification: Tokens

Secondary Classification: New Zealand

Tertiary Classification: Checks

Denomination: No value

Inscriptions: (Edge) Plain
(Obverse) WELLINGTON TRAMWAYS 232
(Reverse) BLANK/PLAIN

Shape: Round, (holed)

Size: 23.97 mm–23.91 mm

Material: Brass

Weight: 4.6 grams

Issued By: WELLINGTON CITY



Victoria University of Wellington Library



▼ ABOUT THIS PAGE

Title: Early Wellington

Author: Louis E. Ward

Publication details:
Whitcombe and Tombs
Limited, 1928, Auckland

Part of:

The New Zealand
Provincial Histories
Collection
New Zealand Texts Collection



Fig. 111.—The Quay, 1900. The building at the left (Midland Hotel site) was the hotel adjoining the Theatre Royal, in Johnston Street (site of Police Headquarters). The hotel was accessible to the lounge of the theatre. The German Band is here seen at the corner. The Occidental Hotel (now Kirkcaldie and Stains) is opposite. The Dresden (later the Bristol) Piano Company's rooms, and the Economic (now merged in the D.I.C.) are at the next corner. The horse tram was in operation. Lindsay's Corner (Woodward Street) is at the extreme right.

History of Trams in Wellington

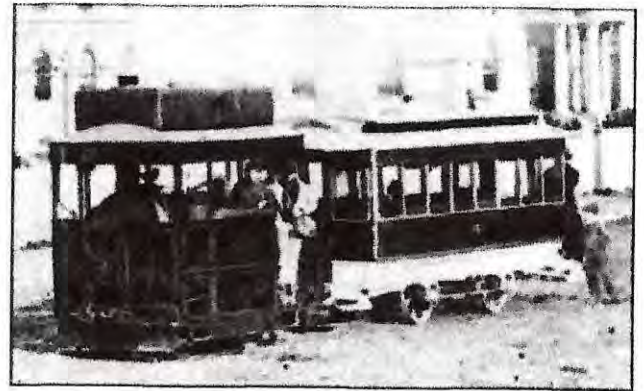
Steam Trams

Wellington entered the tramway story on the 24th August 1878 when the first city steam tram service in the southern hemisphere was opened by the Governor of the Colony, the Marquis of Normanby. The Wellington City Tramways Company's route was laid from a terminal near the Government Buildings in Lambton Quay to the depot at the corner of Adelaide Road and King Street.

Three small steam engines, 'Hibernia', 'Wellington' and 'Zealandia', each hauled a passenger tramcar along with two horse drawn cars operated during the opening day.

They were part of a fleet of eight steam motors named: Florence, Hibernia, Wellington, Zealandia, Victoria, Cambria, Scotia and Anglia. They were supplied by Merryweather and Sons Ltd in England and fourteen passenger cars and four goods wagons were supplied by John Stevenson and Company of New York.

The track was two miles and 62 chains (4.47 Km) in length and laid to a gauge of three foot six inches (1067 mm).



Horse Trams

The noise, soot and disturbance to horses created a lot of opposition to the steam engines and they were replaced with horses by January 1882.

The company was experiencing financial difficulties around this time and this undoubtedly influenced the decision to dispense with the steam engines.

The financial state of the company remained in a perilous condition and after a number of management changes, was purchased for a minimal price by the Wellington City Corporation in 1900.

The following year saw the corporation decide to adopt electric trams for the city and in 1902, a contract was entered into with McCartney, McElroy and Company Limited of London to instal a new and extended system.



Electric Trams

On the 30th June 1904, the first electric tram ran from the new depot at Newtown to the northern side of the Basin Reserve and so signalled the end of the horse drawn service two months later.

By this time, the electric service had been extended through the city to the new Lambton Railway station that had been moved further along Thorndon Quay towards the city.

With the change to electric operation, the gauge of the track was increased to four feet (1219 mm) and the total length of the route was increased to ten miles (sixteen kilometres).



There were thirty three tramcars with about half being single deckers and the remainder doubled decked, all imported from England.

Each tram service displayed a destination sign and route number, which did not necessarily correspond with a particular destination. The route numbers during the last few years of operation were:

1. Lambton Quay to Courtenay Place to Island Bay
2. Lambton Quay to Courtenay Place to Haightaitai and to Kilbirnie, Lyall Bay, Seatoun or Miramar via Haightaitai
3. Lambton Quay to Courtenay Place to Kilbirnie, Lyall Bay or Seatoun via Newtown and Constable Street
4. Thorndon Quay to city to Cuba and Vivian Streets to Newtown
5. Customhouse Quay, Jervois Quay to Manners Street and Courtenay Place
6. Wadestown to city and Cuba and Wallace Streets (used after closure of Wadestown route for trams routed via Jervois Quay Cuba Street
7. From the Railway Station or the city to Aro Street or Brooklyn
8. Railway Station to Lambton Quay via Stout Street
9. City to Oriental Bay (later used by trams to Courtney Place via Customhouse Quay and Willis Street
10. Used by trams routed via Wakefield Street
11. Lambton Quay to Newtown via Cuba and Wallace Streets

The end of the Tramway in Wellington

On the second of May 1964, large crowds gathered along the remaining route to witness the last trams to run through the streets of Wellington and also the last trams in regular passenger service in any city in New Zealand.

Three trams had been decorated especially for the occasion, numbers 250, 251 and 252. The trams had been driven down to a closing ceremony at Thorndon for the tram sheds there then after speeches from invited dignitaries, they moved off for the final time bound for Newtown.

Crowds lined the streets all along the route and the trams moved slowly in procession with a local brass band. Upon reaching the Newtown Sheds, another ceremony was held with the symbolic closing of the large shed doors for the final time.

In their heyday Wellington Tramways covered over 52 kilometres of tram route ([map](#)), all constructed to the unusual track gauge of 4 feet. Suburbs served by the trams, with opening and closing dates, were:

Opened	Line	Closed
1904	Newtown/Thorndon	1964
1905	Island Bay	1963
1904	Oriental Bay	1950
1906	Brooklyn	1957
1904	Aro Street	1957
1907	Hataitai	1962
1907	Hataitai/Kilbirnie/Miramar	1957
1907	Seatoun	1958
1911	Lyall Bay	1960
1915	Crawford Road (Route 3)	1961
1911	Wadestown	1949
1907-11	Kaori	1954
1904	Tinakori Road	1949
1929	Northland	1954

Today the Kelburn Cable Car (1 metre track gauge) remains, with its modern cars.

Closure

In the late 1940s and early 1950s it was decided to replace the trams with buses and trolleybuses, which were seen as more advanced and better suited to the city's needs. The topography of Wellington played a part in this decision - the city's streets are often steep, winding, and narrow, making the greater manoeuvrability of buses a significant asset. The principle of electric transport was retained — many of the tram routes are now served by trolleybuses, see Trolleybuses in Wellington.

The first major line closure came in 1949, when Wadestown closed. The following year the Oriental Bay line closed. In 1954, the Karori line (including the Northland branch) closed. In 1957 services to Aro Street and Brooklyn ended, and the construction of Wellington International Airport destroyed the route to Miramar and Seatoun. All services to the eastern suburbs had ceased by 1962, with Lyall Bay closing in 1960, Constable St/Crawford Rd in 1961, and Hataitai in 1962. (The Hataitai tram tunnel is still in use by buses.) In 1963, the service to Island Bay was withdrawn, leaving mainly inner-city routes. On 2 May 1964 the remaining portion was closed, with a parade from Thorndon to Newtown.

Some of Wellington's old trams have been preserved, and are now in operation at the Wellington Tramway Museum at Paekakariki. Occasionally, it has been suggested that trams should return to Wellington, either in a modern form or as a historical display — in the 1990s, a heritage line was proposed for the city's waterfront, and more recently, a light rail line has been suggested through the city centre. As yet, however, there are no firm plans for any restoration.

Present

Trams still operate today, but only in the Wellington Tramway Museum at Queen Elizabeth Park in Paekakariki.

Heritage > Trams in Wellington, 1878-1964

Introduction

For the 86 years between 1878 and 1964, public transport in Wellington was dominated by the tram. Today we might think of trams as a heavy, antiquated form of public transport, but for an earlier generation they went beyond being a cheap way to move around the city - they were one of the most important infrastructural developments in Wellington's history and their impact can still be seen today.

The history of tramway development in Wellington can be separated into two distinct periods - from 1878 to 1904, and from 1904 to 1964.

Beginnings (1878-1904)

The first trams in Wellington looked more like small steam trains. Launched in August 1878, they consisted of a small steam engine which hauled a single passenger car. There was one main route which ran from the Railway Station to the southern end of Adelaide Road, just up from the Basin Reserve which was where the tram depot was located. There was also a short branch line to Queens Wharf via Lambton Quay and Grey Street. For a number of reasons the steam trams were not a success. They belched smoke and fumes, were noisy, and their heavy weight hammered the mild steel rails which needed constant repair. The noise problem was of particular concern as they could easily frighten the horses used for pulling cabs and carriages. Panicking horses were more than just a nuisance - they could be deadly to pedestrians.

Because of these reasons, in 1882 the heavy steam trams gave way to a return to older technology - horse drawn trams. These proved to be popular with Wellingtonians and the lines were extended to Tinakori Road and to Courtenay Place - a move which was directly responsible for turning Courtenay Place into a public transport hub.

1900 marked the year which saw the beginning of the changes that would lead to trams changing the face of Wellington. The Wellington City Council began negotiations with the private company that owned and operated the tramway and in August of that year, control passed to the Council and the Wellington City Tramways Department was born.

At issue was the future development of the city. At the time, Wellington City only covered Thorndon, Lambton, Te Aro, Mt Victoria, Mt Cook, Newtown and Berhampore. Into this area squeezed well over 40,000 people - over 10,000 more than live in the same area today. Wellington had become a highly congested and over-crowded city with slums developing in some quarters.

Later years (1904-1964)

In 1903, the predominantly rural area controlled by the Melrose Borough Council (consisting of Roseneath, Hataitai, Kilbirnie, Lyall Bay, Island Bay, Melrose, Ohiro Bay, Happy Valley, Brooklyn, and Kelburn) merged with the WCC to become part of Wellington City. The union of these two local authorities helped opened up large areas of largely undeveloped land that was perfect for new housing. Though many people were interested in building new houses and communities, any such development was not likely to succeed unless there was a way in which people could easily get and from the central city for work and entertainment. The motorcar had only just been invented and was expensive, unreliable, and considered only as toys for the very wealthy. Roads were rough and largely unsealed meaning dust in summer and mud in winter - not that practical for walking or bicycle riding. Horses were not practical option for many working families and required expensive stabling.

In a move planned to help Wellington develop, the City Council borrowed £225,000 (a huge sum of money for the times) to invest in the extension and electrification of tramway network. By 1911 the total amount borrowed had increased to £645,000 - an extraordinary figure considering the small population at the time.

A separate power station was built (there was no national electricity grid at the time), kilometres of hard steel track were laid, an overhead wire system was strung up and tram sheds and tram stops were constructed. On the 30th June 1904 the new era began with a short run through Newtown. Within months the main route through the city was completed and by 1907, trams were running through the Hataitai Tunnel to Kilbirnie, Miramar and Seatoun, through Berhampore to Island Bay, and up to Brooklyn and Karori Cemetery. These



Postcard of Lambton Quay with trams. [2]



Outside the Wellington Corporation Tramways shed, Drummond Street, and Horse drawn tram, bound for Cuba Street 1900.



Postcard of Kilbirnie Tunnel. [4]

opened up large tracts of land and suburbs of Wellington began to boom. By 1911, extensions were laid to Karori Park and up to Wadestown.

For the next 50 years, life in Wellington was dependent on the tram as a means of transport, but gradually city planners began to realise that their days were numbered. Many of Wellington's streets were very narrow by Australasian standards and large trams lumbering down the centre-line of the road didn't mix well with increasing numbers of cars. Buses were seen to be the future, being much a more manoeuvrable and safer form of public transport. By the late 1950's routes began to close, and on 2nd May 1964, the last surviving tramcar route in New Zealand (Thorndon to Newtown) came to a close.

Though Wellington's trams now exist only as museum pieces, their legacy can still be seen today. The Hataitai tram tunnel through Mt Victoria is still in use and many roads such as the main routes to Wadestown and Brooklyn owe their existence to the major engineering works which were required to lay tram tracks to these hill suburbs. In some regards we have perhaps only moved on to another stage of tramway development - Wellington's "trackless trams" (what we now know as Trolley Buses) continue as New Zealand's last link with a city-wide tramway network.



Wellington Tram.



Wellington tramway system

From Wikipedia, the free encyclopedia

The **Wellington tramway system** (1878 - 1964) operated in Wellington, the capital of New Zealand. The tramways were originally owned by a private company, but were purchased by the city and formed a major part of the city's transport system.



A former Wellington tram (Double Saloon No. 159, built 1925) at the Wellington Tramway Museum.

Trams

Initially in 1878, Wellington's trams were steam-powered, with an engine drawing a separate carriage. The engines were widely deemed unsatisfactory, however — they created a great deal of soot, were heavy (increasing track maintenance costs), and often frightened horses. By 1882, a combination of public pressure and financial concerns caused the engines to be replaced by horses. In 1902, after the tramways came into public ownership, it was decided to electrify the system, and the first electric tram ran in 1904. Trams operated singly, and were mostly single-deck but some double-deck.

History

The first tram line in Wellington opened on 24 August 1878. The line was 4.5 km in length, and ran between the north end of Lambton Quay and a point just south of the Basin Reserve.

After 1900, when the tramway was bought by the city authorities and electrified, a major extension of the network took place, with lines to Aro Street, Oriental Bay, and Tinakori Road in operation in 1904. The following year, a line was constructed through Newtown and Berhampore to Island Bay, and the year after, from the Te Aro line to Brooklyn. In 1907, a dedicated tram tunnel to Hataitai was completed, allowing services to reach Kilbirnie, Miramar, and Seatoun. The Tinakori Road line was extended westward towards Karori, reaching Karori Cemetery.

Construction of new track then slowed, but did not stop. In 1911, a line was built from Kilbirnie to Lyall Bay and from Tinakori Road to Wadestown. By this time, the Karori line had been extended to Karori Park. In 1915, a line was built to connect Newtown with Kilbirnie, via Constable Street and Crawford Road. Finally, in 1929, the last new line was completed, a branch of the Karori line through a tunnel to Northland.

In 1924, a case went to the Court of Appeal of New Zealand challenging the use of eminent domain to secure right-of-ways for tracks. In *Boyd v Mayor of Wellington*, the court found that, although the government forced the sale of land improperly, it had acted in good faith so the sale was not reversed.

Wellington's more northerly suburbs, such as Johnsonville and Tawa, were not served by the tram network, as they were (and are) served by the Wellington railway system. The Wellington Cable Car, another part of Wellington's transport network, is sometimes described as a tram, but is not generally considered so. It was opened in 1902, and is still in operation.

Wellington's electric tramways had the unusual gauge of 4 ft (1,219 mm), a narrow gauge. The steam and horse trams were 3 ft 6 in (1,067 mm) gauge, the same as New Zealand's national railway gauge.

Map



Map of the Wellington tramway network at its greatest extent, superimposed on a map of the city as it is today.

Check - WELLINGTON WHARF LABOURERS INDUSTRIAL UNION of WORKERS

New Zealand - Token /Badge Circa 1913

Reg. No: TMR - W27

Summary:

New Zealand
No denomination (AD)
Mint: Unknown

Discipline: Numismatics

More information

Tagged with: Union tag/badge tokens

Themes this item is part of: Numismatics & Philately Collection

Primary Classification: Tokens

Secondary Classification: New Zealand

Tertiary Classification: Checks

Denomination: Member # 342 No value

Inscriptions: (Edge) Plain
(Obverse) W.W.L.I.U.W. 1913 #342
(Reverse) A pin holder

Shape: Round

Size: 16.93 mm–17.01 mm

Material: White Metal (uniface)

Weight: 1.3 grams

Issued By: WELLINGTON W.L.I.U.W
UNION



About 20 new unions have been registered in New Zealand by the Labour Department as the result of the strike, and in addition there are several new unions which have not been connected with the industrial trouble. Applications are now coming in from the miners' unions. It is anticipated that when the annual returns are made up they will show a large increase in membership.

During the recent strike we had 5 shipments arriving fortnightly in Wellington. These all came to us in Christmas week, too late for our trade. To-day we commence a sale of these new goods at half-price —At 'T. Ross', direct importer...

The metal "preference badges," to indicate those members who joined the new Arbitration Wharf Labourers' Union at Wellington on or before December 8, 1913, have now been received by the secretary, Mr Purdey. The "badge" consists of a disc of white metal attached to a pin for wearing on the lapel of the coat. On it is depicted a lion seated on a crown and holding a flag. Around the edge are embossed the letters, W.W.L.I.U.W., 1913 (Wellington Wharf Labourers' Industrial Union of Workers). Each disc is numbered, and a record will be kept of all members to whom they are supplied.



Check -WELLINGTON WOOLLEN MANUFACTURING New Zealand - Token Circa 1886—1963

Reg. No: TMR - W28

Summary:

New Zealand
Penny(AD) No value
Mint: not recorded.

Discipline: Numismatics

More information

Tagged with: Produce tokens/Tool Checks

Themes this item is part of: Numismatics & Philately Collection

Primary Classification: Tokens

Secondary Classification: New Zealand

Tertiary Classification: Checks

Denomination: # 196

Inscriptions: (Edge) Plain
(Obverse) Wellington Woolen Manufacturing Co Limited 196.
(Reverse) Blank

Shape: Round (Uniface)

Size: mm

Material:

Weight: grams

Issued By: Wellington Woolen
Manufacturing Co Limited, Wellington





Wellington Woollen Company's office and Warehouse, corner of Willeston and Victoria Streets.

Wellington Woollen Company's Office and Warehouse, corner of Willeston and Victoria Streets.

**Wellington Woollen Manufacturing Company, Limited
1886----1963**



**Wellington Woollen Manufacturing Company, Limited
Warehouse for the Company in Christchurch 1920's
96 Lichfield Street, Christchurch. (Picture 1/2/2001)**

WELLINGTON WOOLLEN MANUFACTURING COMPANY, LIMITED

901

WELLINGTON WOOLLEN MANUFACTURING COMPANY, LIMITED

Wellington Woollen Manufacturing Company, Limited. Directors: Hon. C. J. Johnston, M.L.C. (chairman), Messrs. W. A. Fitzherbert, J.P., C.E., W. H. P. Barber, A. Warburton, A. E. Gibbs, and C. E. Zohrab. Head office, warehouse, and clothing factory, corner of Jervois Quay and Willeston Streets. Mills, Te Koro Koro, Petone. Telephones 200 and 400. Bankers, Bank of New Zealand, General manager, Mr. M. G. Heeles; secretary, Mr. A. E. Donne. The capital of this large Company is £100,000 in 20,000 shares of £5 each, of which 17,710 are allotted, £4 per share being paid up in respect of 11,275 shares, and £1 10s. on 6441 shares. The Company was incorporated in June 1883, commenced manufacturing operations in August 1886, and has paid many dividends, the last (1896) being at the rate of six per cent. The splendid mills at Petone are described in the article dealing with that manufacturing borough. The head office and factory—lately completed—which appears in the engraving, is a handsome brick building of three and four stories designed by Mr. F. Penty, architect, and erected by Messrs. Paterson and Martin, contractors. The total floorage space of this fine building is from fifteen to twenty thousand square feet. On the ground floor is the showroom, the entrance being at the corner, where there are tastefully finished glazed folding doors. Samples of the well-known goods manufactured by the company are arranged in all directions. The cart entrance extends right through the building at the side next to Messrs. Sharland and Co's warehouse, and is so arranged as to bring the platforms of the carts to the same level as the floor of the building. A portion of the ground floor near this entrance is utilized as the packing room. The various floors are connected with this department by an electric goods lift. The Company's office—including the general manager's office, which

is also used as a board room—secretary's and public office, fireproof safe room and telephone room are situated above the cartway, the entrance being by a staircase from the show-room. The first principal floor is used as a cloth-cutting and machine-room. Here the large patent knife for cloth-cutting is worked, and about seventy hands are employed. The electric motor which furnishes the power to drive the plant is placed on a concrete floor above the Company's safe, the rooms immediately above the offices being used as the cutter's department. On the second or top main floor—known as the machine-room—is a busy scene, about 150 hands—mostly girls—being engaged. The Company has just doubled the number of machines—all of the Singer Company's make—which now total forty-eight. The irons for smoothing are of the patent electric pattern, the subtle fluid being used for heating purposes, this being said to be the first practical application of electricity for heating purposes in Australasia. Altogether some 250 hands will be employed in this department of the Company's business. The building, which is admirably adapted for the purpose of the trade, is splendidly lighted and well ventilated, and as the Woollen Company has secured an adjoining allotment they have ample room to double the size of their premises when required. Excellent provision has been made for the girls on the top flat: a large dining room suitably furnished, supplied with hot water and lavatories attached being allotted to them. The entire building is lighted with electricity, and an iron fire escape communicates with each floor.

Wellington Woollen Manufacturing Company, Limited
1886----1963

Check - WHITEFORDS, C.F.A. PALMERSTON NORTH New Zealand - Token Circa 1930'S

Reg. No: TMR - W29

Summary:

New Zealand
Penny(AD)
Mint: not recorded.

Discipline: Numismatics

More information

Tagged with: Produce tokens

Themes this item is part of: Numismatics & Philately Collection

Primary Classification: Tokens

Secondary Classification: New Zealand

Tertiary Classification: checks

Denomination: 6d

Inscriptions: (edge)
(Obverse)
(Reverse) Plain

Shape: round

Size: 25.5 mm

Material: Aluminium

Weight: ?? grams

Issued By: Whitefords, Chemist

**Check -WHITEFORDS, C.F.A. PALMERSTON NORTH
New Zealand - Token Circa 1930'S**

CUNNINGHAME, JOHN RAINSFORD, Chemist and Druggist, Hautapu Street, Taihape. This business was established in the year 1901 by Mr. Foster, and acquired by Mr. Cunninghame in 1907. The shop is well fitted up and the goods neatly arranged. A complete stock of proprietary medicines, drugs, toilet requisites, etc., is maintained. Mr. Cunninghame was born in Wellington in the year 1882, and was educated at the State school and the Palmerston North Collegiate School. He studied his profession under Mr. Whiteford, of Palmerston North, and Mr. Brittain, of Wellington, and passed his examination as a chemist and druggist in April, 1906. Mr. Cunninghame then took charge of Mr. Wilkinson's business in Dunedin, which position he subsequently resigned to start his present business. He has recently taken up optical work in connection with his business, and has had considerable experience in this connection. On November 13th, 1907, Mr. Cunninghame married, in Wellington, Miss Feltham. Mrs. Cunninghame is also a qualified chemist.



MR. J. R. CUNNINGHAME.

MR. J. R. CUNNINGHAME.

Check -Whiti Farm Park. Tairua–Whitianga Road New Zealand - Token Circa N.D.

Reg. No: TMR - W30

Summary:

New Zealand
Value \$2.00 coin (AD)
Mint: not recorded.

Discipline: Numismatics

More information

Tagged with: Produce tokens

Themes this item is part of: Numismatics & Philately Collection

Primary Classification: Tokens

Secondary Classification: New Zealand

Tertiary Classification: Checks

Denomination: \$2.00

Inscriptions: (Edge) Plain
(Obverse)Whiti / Farm Park /ph 07 866 2349 / (Animals)
(Reverse) 1990 NZ \$2.00 coin

Shape: Round

Size: 26.55mm –26.58mm

Material: C&N&M

Weight: 10.1 grams

Issued By: Whiti Farm Park
Tairua– Whitianga Road



Whiti Farm Park Token (sticker on \$2 coin)



[HOME](#)
[ABOUT US / 4 SALE](#)
[ADMISSION](#)
[PHOTO GALLERY](#)
[WHITIKITTI KATTERY](#)
[CONTACT US](#)

WHERE ARE WE?

We are located on the picturesque East Coast of the Coromandel Peninsula. Only a short 2 hour drive from Auckland, Hamilton or Tauranga on fully sealed roads.

Find us ...10 minutes south of Whitianga township and 30 minutes north of Tairua on the MAIN ROAD. State highway 25. (the Tairua - Whitianga Road)



Join us on facebook

Latitude 36,53'33.31"S.
Longitude 175,40'23.96"E

Send us an email

07 866 2349

Check -WIZARDS, WIZARDS ARCADE, CH-CH New Zealand - Token Circa 1980's

Reg. No: TMR - W31

Summary:

New Zealand
Penny(AD) No value
Mint: not recorded.

Discipline: Numismatics

More information

Tagged with: Game, pinball/ tokens

Themes this item is part of: Numismatics & Philately Collection

Primary Classification: Tokens

Secondary Classification: New Zealand

Tertiary Classification: Checks

Denomination: No value

Inscriptions: (Edge) Plain
(Obverse) Wizards (grooved above wording)
(Reverse) No cash value (grooved above wording)

Shape: Round

Size: 27.24mm–27.29mm

Material: Steel

Weight: 8.3 grams

Issued By: Wizards
Arcades in Christchurch



Wizards Arcade Token Sells for More Than \$50 on TradeMe



A token once used to play games at the "Wizards" videogame arcade in Christchurch has sold on TradeMe for more than \$50, after a furious bidding war.

The small metal coin, stamped with "WIZARDS", is one of three that the vendor - "midsta" - has in their possession; the winner ("jinxs") will be able to choose which of the three they would like to own.

"28 years ago," the [auction](#) details explain by way of introduction to the sale. "a little 9 year old boy had the misfortune of getting the zip to his Green Adidas three stripe Trackies jammed, trapping these little gems. Oh the tears!"

"Holding one of these WILL transport your mind back to those good ole days, when you didn't care about ink stained Fish & Chips and a 20 cent mixture couldn't fit in your pocket."

midsta went on to state that they plan to frame one of their remaining coins, alongside a picture of the Wizards arcade, for use in their son's bedroom.

Check - W.M.CO-O.S. LTD, PORT CHALMERS New Zealand - Token Circa 1920'S

Reg. No: **TMR - W32**

Summary:

New Zealand
Penny(AD)
Mint: not recorded.

Discipline: Numismatics

More information

Tagged with: Produce tokens

Themes this item is part of: Numismatics & Philately Collection

Primary Classification: Tokens

Secondary Classification: New Zealand

Tertiary Classification: Checks

Denomination: 1 pound

Inscriptions: (edge) Plain
(Obverse) W.M.CO-O.S.LTD PORT CHALMERS (£1)
(Reverse) Plain –BUT SHOWS THROUGH

Shape: Oval-- bracteate style

Size: 38 x 25 mm

Material: Brass

Weight: ?? grams

Issued By: W.M.CO.-O.S. LTD,
PORT CHALMERS



Country: [New Zealand](#)
 Series: [1952 Today - Elizabeth II](#)
 Catalog codes: **Unusual World Coins x6**
 Issued on: [1984](#)
 Last issue date: [1984](#)
 Distribution: [Numismatic Product](#)
 Composition: [Gold](#)
 Shape: [Circular](#)
 Rim: [Raised Not decorated Both sides](#)
 Weight: 29.5 grams
 Face value: 20 \$ - New Zealand dollar
 Composition Details: 0.9167
 Description: Obverse: Stylized runners



Check - XX111 Olympiad, Los Angeles New Zealand - Token Circa-- 1984

Reg. No: TMR - X1

Summary:

New Zealand
 No value-- Five Dollars
 Mint: Issued by Auckland Coin & Bullion Exchange Ltd.
 Designed by Alan Sanders of Auckland

Discipline: Numismatics

More information

Tagged with: Commemorative tokens

Themes this item is part of: Numismatics & Philately Collection

Primary Classification: Tokens

Secondary Classification: New Zealand

Tertiary Classification: Checks

Denomination: \$5.00

Inscriptions: (Edge) Plain
 (Obverse) New Zealand / (flag and stars) / Five Dollars
 (Reverse) XX111 Olympiad / (Five Rings & Fern) / Los Angeles 1984

Shape: Round

Size: 38 mm

Material: Sterling Silver 0.25

Weight: 29 grams

Issued By: Auckland Coin and Bullion



History of the 1984 Olympics in Los Angeles



1984 Summer Olympics



Games of the XXIIIrd Olympiad Los Angeles 1984



Number of Countries: 140

Number of Events: 221

The Soviets, in retaliation for the U.S. boycott of the 1980 Olympic Games in Moscow, boycotted the 1984 Olympics. Along with the Soviet Union, 13 other countries boycotted these Games. Despite the boycott, there was a lighthearted and happy feeling at the 1984 Olympic Games (XXIII Olympiad), which were held between July 28 and August 12, 1984.

Official Who Opened the Games: President Ronald Reagan

Person Who Lit the Olympic Flame: Rafer Johnson

Number of Athletes: 6,829 (1,566 women, 5,263 men)

China Is Back

The 1984 Olympic Games saw China participate, which was the first time since 1952.

Using Old Facilities

Rather than build everything from scratch, Los Angeles used many of its existing buildings to hold the 1984 Olympics. Initially criticized for this decision, it ultimately became a model for future Games.

Check - A. H. YARROW, Baker of Manaia, Sth Taranaki New Zealand - Token Circa 1920'S

Reg. No: TMR - Y1

Summary:

New Zealand
No denomination (AD)
Mint: Unknown

Discipline: Numismatics

More information

Tagged with: Produce tokens

Themes this item is part of: Numismatics & Philately Collection

Primary Classification: Tokens

Secondary Classification: New Zealand

Tertiary Classification: Checks

Denomination: 2lb loaf

Inscriptions: (edge) PLAIN
(Obverse)
(Reverse)

Shape: Round

Size: 23.00 mm

Material: Aluminium

Weight: ??? grams

Issued By: A. H. YARROW,
MANAIA, Sth TARANAKI

Check - A. H. YARROW, Baker of Manaia, Sth Taranaki



The Yarrows Story

From humble beginnings to international success, the Yarrows story is an inspirational tale that began over eight decades ago in the small sleepy South Taranaki township of Manaia.

Way back in 1923, husband and wife Alfred and Grace Yarrow decided to take a chance on life, leaving the family bakery they had established in Turakina, to set up shop in the slighter larger, albeit small South Taranaki township of Manaia.



Noel & Don, with over 100 years of baking experience.

Upon their arrival, Alfred (or Alf as he was affectionately known) and Grace brought a modest bakery from a Mr Farmer. They renamed the bakery "A.H. Yarrows".

However (and rather ironically), it wasn't there the couple first baked their delicious goods – the bakehouse at the rear of the building was so small they baked their breads and cakes down the street, bringing them back to the shop by horse and cart.

The Yarrow's family life revolved around the bakery – in fact the couple and their three children lived in the quarters out the back of the building, which also contained a retail area and a teashop. Life was good, and a year after setting up shop, the couple gave birth to their fourth child, Noel, who was to spend his entire working life at the helm of the family bakery business, until his death, at 83, in April 2008.

Eighty five years have now passed since Yarrows first opened their doors, and while the factory has undergone some major changes and extensions and has been brought up to the minute with the latest technologies and production equipment,

Baker keen to rise again

LYN HUMPHREYS Last updated 05:00 13/10/2011

John Yarrow, the baker, was working the nightshift at his Mighty Bakery at Tirau last night.

"I'm having to run a nightshift tonight. I don't like sitting in offices," says the new back-to-the-future owner of the troubled Yarrow's Manaia operation.

From November 1, if not before, Melva and Noel Yarrow's oldest son and his wife Rosaleen take over both the Manaia and the Rotorua companies.

They have named their new company Yarrows (the Bakers) 2011 Ltd.

In an exclusive interview with the Taranaki Daily News yesterday John Yarrow, aged in his late 50s, spoke of his passion to get the three-generation family business back on track after it was placed in receivership under his younger brother's ownership in May.

"When we left the place it was a very, very successful company.

"I'm sorry for everyone's sake what has happened.

"My name's Yarrow and I lived in Taranaki and I worked in that factory for 32 years and I would like to see it come back to the successful company it was at that stage.

"At the same time I have to evaluate all the options. I've got to be a businessman but my heart's still in that bakery."

The couple intend to continue running the Mighty Bakery Ltd at Tirau along with the Rotorua operation. They will be the sole owners of Yarrow's New Zealand business and assets – minus the liabilities.

The firm will have no involvement with his parents' trust but Mr Yarrow was very keen to see it continue with its objective to help out Taranaki people.

At this stage, the couple will continue to live in Tauranga. "But I will be there [in Manaia] quite a lot."

He and brother Paul have been through the courts since the two parted ways after their father retired but the lines of communication are open.

"I have spoken to Paul since all this has happened."

In the meantime, his focus is on Manaia. "I'm looking forward to resuming the relationships with the staff, the customers and suppliers. I want to make it a successful company and build the place up, that's what I want to do."

"I've got to catch up with the staff. I've got to evaluate all the options once I get in there. I'm just really wanting to see if we can grow the business again and get it back on track. That's my main aim."

- © Fairfax NZ News

 South Road

 no date



History

Yarrow's (the Bakers) Limited has been operated since 1923 by three generations of the Yarrow family. Retired Managing Director Noel Yarrow and his parents lived on the premises until 1943. The original bakery was built in 1928 and many additions have been made both to the bakery and the retail shop over the years.

The Yarrow family came from Turakina to commence business, making their own yeast from potatoes and keeping poultry to supply eggs. Mr Alfred Yarrow, who was a Probation Officer and Justice of the Peace, guided many young delinquents into a useful lifestyle.

Mr A H Yarrow JP operated the company with his wife and family until his death in 1951. His two sons Howard and Noel Yarrow continued the business and it was during this period that the company gradually expanded its operations from Patea in the south to Okato in the north. There was a steady growth in automation and many changes in bread manufacture. In 1968, Howard Yarrow withdrew from the company which was taken over by Noel and his wife Melva. As technology rapidly developed, the company continued to expand its operating area and moved into Central and North Taranaki.

In 1970 the company, together with the bakery units in the southern area of the North Island, formed Quality Bakers of New Zealand Limited of New Zealand, a marketing company based in Wellington and formed to take advantage of television advertising.

From 1970 to 1982, there was a period of general consolidation in the baking industry. The production of frozen dough using a new baking technique developed in the USA revolutionised the New Zealand baking industry but created problems within Quality Bakers of New Zealand Limited. Yarrow's ultimately withdrew from the company. During this time, Noel Yarrow's elder son John joined the company and assumed responsibility for the new development process.

During the next six years, the demand for frozen products produced in Manaia rapidly increased throughout New Zealand necessitating continual expansion of the facilities and buildings. In 1986, Paul Yarrow, Noel's younger son, joined the company.

Yarrow's continued to expand and now exports to the USA, Singapore, Japan, Australia, and the South Pacific. More than 250 people are employed and Yarrow's has its own technical support staff based in each country.

Yarrow's provides employment for many households in Manaia thus making a significant economic contribution to the district. Employees also travel to Manaia every day from Stratford, Opunake, Patea, Hawera, Waverley, and New Plymouth.

Yarrow's (The Bakers) Ltd is the largest privately owned bakery in New Zealand. Noel Yarrow JP retired in 1999 and his two sons, John and Paul continue to manage the company.



Yarrow the Bakers Ltd (formerly the BNZ Bank), South Road

Description

The BNZ Bank is a two storey building of reinforced concrete piers and beams with plastered brick infill. An addition links the building to the Yarrows factory. The interior has been redesigned to accommodate the boardroom of Yarrows (The Bakers) Ltd.

History

The original BNZ Bank was a small cottage-like structure with private accommodation. It was opened in Manaia during 1881. In 1891 this building was replaced by a larger building, also with accommodation, but it was destroyed by fire in 1900.

The existing BNZ building was built in 1927 at a cost of £4,288.11. It is a more imposing building than its predecessor. The ledge along the front of the building provided the only seating in the centre of Manaia. One resident recalls that there was always a rush to secure a seat outside the bank so that you would have a place to sit down and watch the world go by while you ate your Yarrows pie.

It is now used by Yarrows (the Bakers) Ltd as a boardroom.

Check - S.YOUNG, TRAM TOKEN, AUCKLAND

New Zealand - Token Circa 1920'S TYPE B

Reg. No: TMR - Y2

Summary:

New Zealand

No value(AD)

Mint: Ferdinand A.N.Teutenberg, Auckland.

Discipline: Numismatics

More information

Tagged with: Transport tokens

Themes this item is part of: Numismatics & Philately Collection

Primary Classification: Tokens

Secondary Classification: New Zealand

Tertiary Classification: Checks

Denomination: No value

Inscriptions:
 (edge) Plain
 (Obverse) S. Young Safety Return
 (Reverse) S. Young Safety Return

Shape: Round

Size: 33 mm

Material: Copper

Weight: ?? grams

Issued By: S. YOUNG



Check - S.YOUNG , TRAM TOKEN, AUCKLAND New Zealand - Token Circa 1920's TYPE A

Reg. No: TMR - Y3

Summary:

New Zealand

3d (AD)

Mint: Ferdinand A.N.Teutenberg, Auckland.

Discipline: Numismatics

More information

Tagged with: Transport tokens

Themes this item is part of: Numismatics & Philately Collection

Primary Classification: Tokens

Secondary Classification: New Zealand

Tertiary Classification: Checks

Denomination: 3d (Pence)

Inscriptions: (Edge) Plain
(Obverse) S.YOUNG FARE 3d Diamond decoration each side
(Reverse) S.YOUNG FARE 3d Diamond decoration each side

Shape: Round

Size: 26.88mm – 26.94mm

Material: Copper

Weight: 3.3 grams

Issued By: S.YOUNG
AUCKLAND



TRANSPORT TOKENS

NEW ZEALAND TRAMWAYS NOTES CONCERNING:-

CROWTHER, TRAMWAY PASS	Reg No TMR - C52
McMILLAN'S, TRAM TOKEN	Reg No TMR - M22 & M23
S.YOUNG, TRAM TOKEN, TYPE B	Reg No TMR - Y2
S.YOUNG, TRAM TOKEN, TYPE A	Reg No TMR - Y3

TRANSPORT TOKENS

Extracted from "Teutenberg – a Master Engraver and His Works"
By Jim Duncan and John Cresswell, 2007.

There are three tokens known to have been issued by Auckland horse-tram operators. It was the opinion of the much respected Harry Robinson that at least two of these pieces were made by Teutenberg (Crowther and Young). The third piece – for McMillan – is of such crude manufacture as to suggest that it was not by Teutenberg. The evidence for his manufacture of the others is circumstantial and is given here.

1: Punches for the Crowther and Young pieces were photographed (along with other Teutenberg material) by Duncan at Goldcorp (a now-defunct New Zealand gold and billion dealer). There was no material by any other local maker in the same consignment.

2: An uncirculated Crowther specimen is in the Teutenberg family's care, where it lies with a collection of mostly silver 'bits and pieces' in an old cash box.

3: The style of both the Crowther and Young pieces can be detected in the many gold mine seals illustrated.

4: Harry Robinson was of the opinion that the struck Crowther and Young pieces were by Teutenberg. His opinion certainly carries weight. Conversely the McMillan token, which is uniface (the others are not) is so crudely and unevenly stamped that some letters have cut right through the uneven flan. Teutenberg was capable of much better work than this from his very first day in New Zealand. The Crowther and Young pieces are of coin quality, whereas McMillan's may have been made by a plumber or blacksmith. A second variety of Young tokens exists. It was used by Brian Bolton to illustrate the horse tram token section of his *Auckland Tradesmen's Tokens* (1991). This is almost identical to the McMillan token described here, and could have been made by the same hand. Bolton says 'it is usually uniface, but the specimen shown is struck on both sides.' (S.YOUNG'S SAFETY RETURN. on both sides.

Duncan had the opportunity to take rubbings from which he later did drawings of the struck Crowther and Young tokens and the punched McMillan piece while they were in the Robinson collection. The master of the Young token is listed under X2 and illustrated.

TRANSPORT TOKENS

Extracted from "Teutenberg – a Master Engraver and His Works"
By Jim Duncan and John Cresswell, 2007.

T1* CROWTHER TOKEN. Obv. CROWTHER across the centre with RETURN around the top and BEARER around the bottom. Rev: *PARNELL* & NEWMARKET around an outer circle, and LINE OF SAFETY around an inner circle with a cross-hatched decoration in the centre. 27mm. Copper.

T2* YOUNG TOKEN. Type A. Obv and Rev: S.YOUNG with a diamond decoration at each end around the top and FARE = 3d around the bottom, with a central decoration. Both sides are the same. 27mm. Copper

A Type A token was sold by Noble Numismatics, Sale 43, lot 3170, 17-18 Nov. 1993.

T3* YOUNG TOKEN. Type B. Ob and Rev: Two circles and between them S.YOUNG'S SAFETY around the top and RETURN around the bottom. Crudely struck (see notes above). C33mm. Copper.

T4* McMILLAN TOKEN. Uniface. McMILLAN'S around top. SAFETY around bottom, and RETURN across centre. C30.5mm. Copper
Crudely punched and possibly by the same maker as Young Token Type B (see notes above).

oOo

This is straight from the book. The pieces were all on flans too thin to have any edge markings. As stated, Crowther and Young Type A are of coin quality.



End of Part Four:- T to Z

See

Part One:- A to H

Or

Part Two:- I to N

Or

Part Three:- O to S

Or

Part Four:- T to Z

Or Maybe

Part Five:- "Additions and Updates" A to Z

Wellington

Wellington (Māori: *Te Whanganui-a-Tara* [tɛ ˈfaŋanui a tara]) is the capital city of New Zealand. It is located at the south-western tip of the North Island, between Cook Strait and the Remutaka Range. Wellington is the major population centre of the southern North Island, and is the administrative centre of the Wellington Region, which also includes the Kapiti Coast and the Wairarapa. It is the world's southernmost capital of a sovereign state.

^[3] Wellington features a temperate maritime climate, and is the world's windiest city by average wind speed.

The position of Wellington as capital of New Zealand is not defined in legislation, but established by convention. Its metropolitan area comprises four local authorities: Wellington City, on the peninsula between Cook Strait and Wellington Harbour, contains the central business district; Porirua on Porirua Harbour to the north is notable for its large Māori and Pacific Island communities; Lower Hutt and Upper Hutt are largely suburban areas to the northeast, together known as the Hutt Valley. The Wellington urban area, which only includes urbanised areas within Wellington City, has a population of 215,400 residents as of June 2019. The urban areas of the four local authorities have a combined population of 416,800 residents as of June 2019.

As the nation's capital since 1865, the New Zealand government and parliament, the Supreme Court, and most of the public service are based in the city. Architectural sights include the Old Government Buildings—

Wellington

Te Whanganui-a-Tara (Māori)

Capital city



Clockwise from top: Waterfront along Wellington Harbour, Parliament Buildings, The Bucket Fountain, National Library, Wellington Cable Car



Flag



Coat of arms

Nickname(s): Windy Wellington, Wellywood



Location in New Zealand & Pacific Ocean